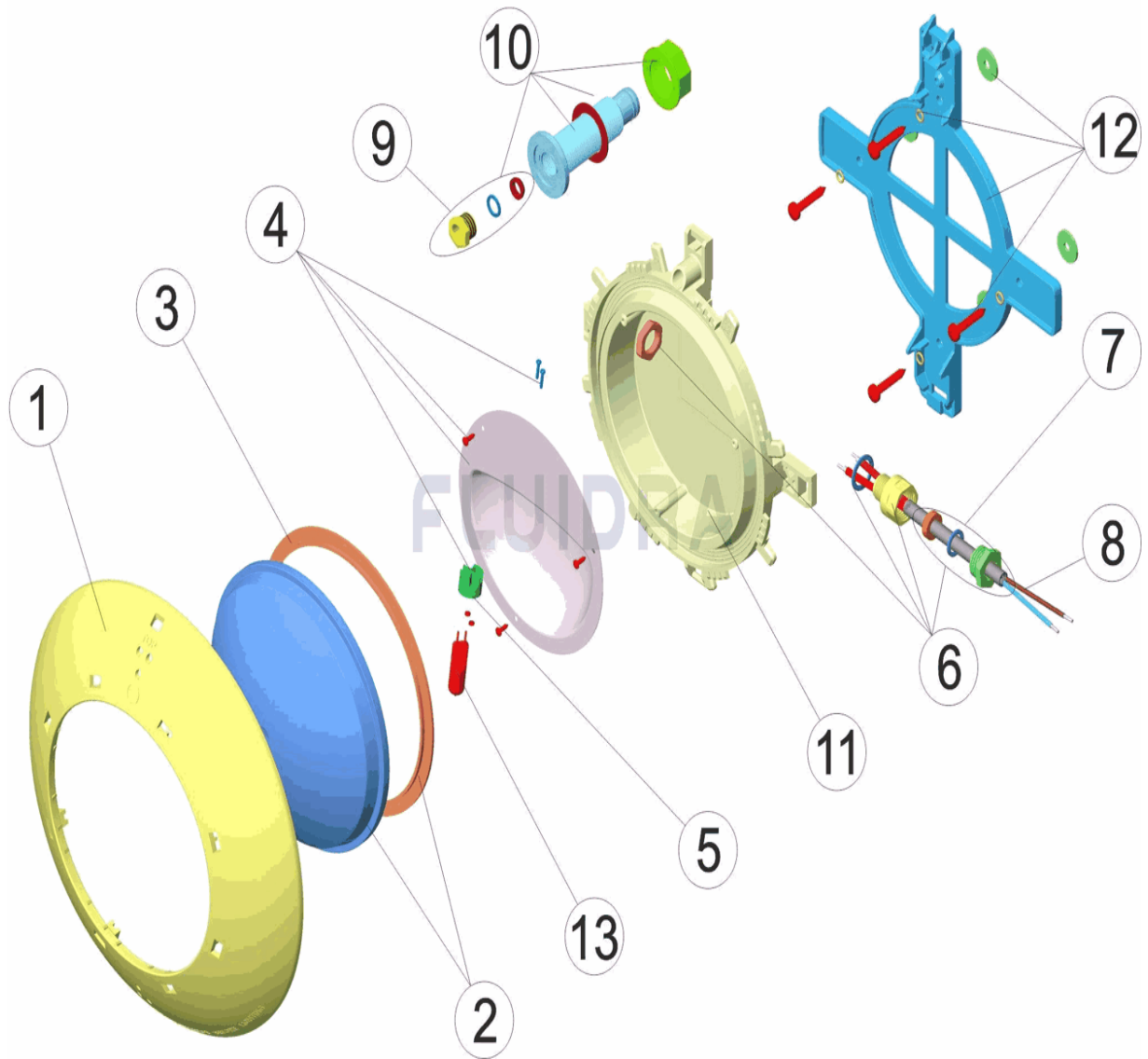


CODIGO 33110

DESCRIPCION: PROYECTOR EXTRAPLANO P. MADERA

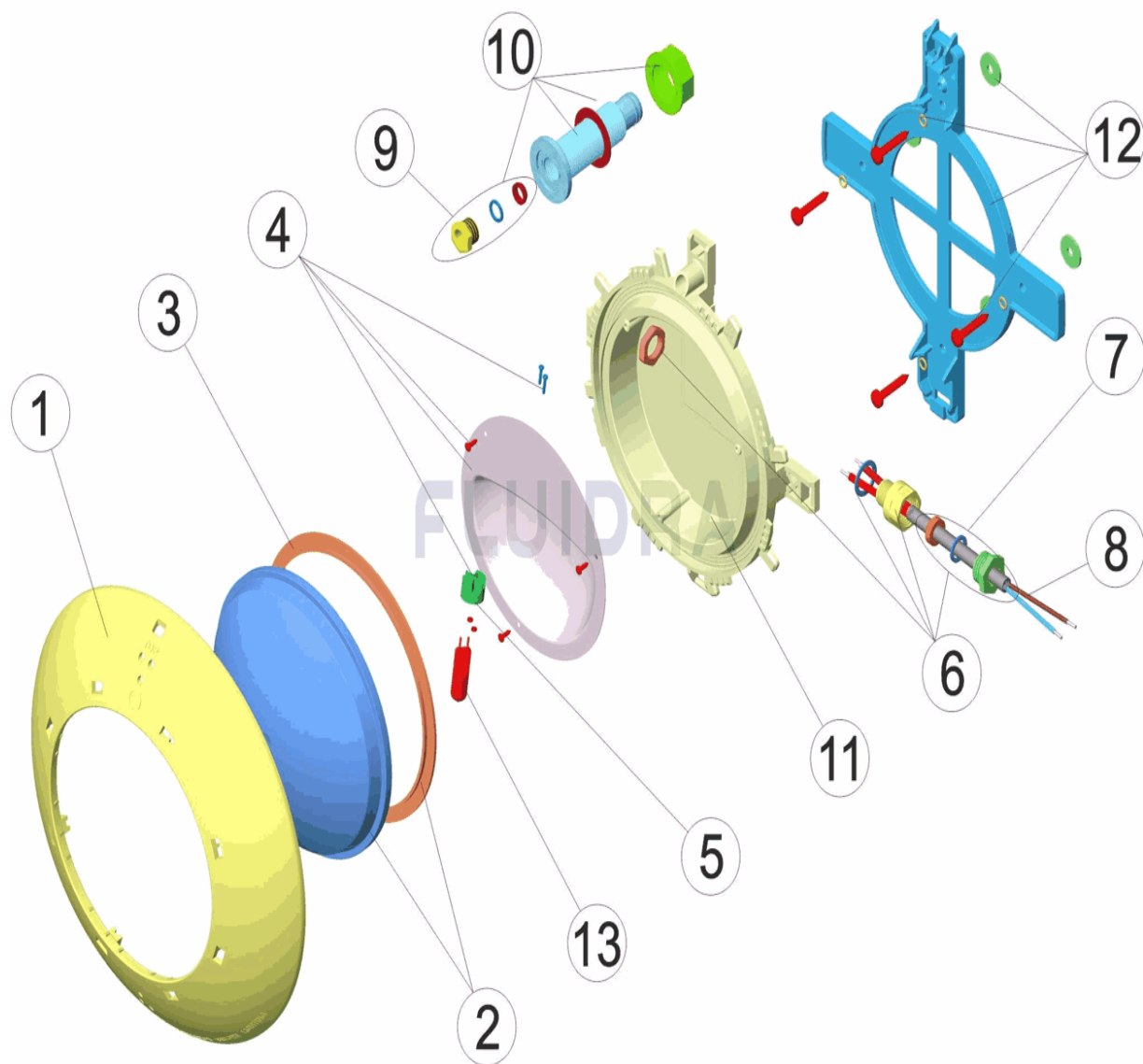


**ESPAÑOL**

POS	CODIGO	DESCRIPCION	CANTIDAD	POS	CODIGO	DESCRIPCION	CANTIDAD
1	4403010067	EMBELLECEDOR PROYECTOR		8	4403011905	CABLE PROYECTOR	
2	4403012303	LENTE TRANSPARENTE + JUNTA		9	4403012704	PRENSAESTOPAS PG-9	
3	4403010102	JUNTA SILICONA PROYECTOR		10	4403010038	BOLSA COMPONENTES PARA EL 33110	
4	4403011903	REFLECTOR PORTALAMPARAS		11	4403011908	CUERPO PROYECTOR	
5	4403011407	PORTALAMPARAS		12	4403010068	SOPORTE PROYECTOR PLANO	
6	4403012302	CJTO. PRENSAESTOPAS M-16 KT 19,5X2		13	00371	LAMPARA HALOGENA 12 V. 100 W.	
7	4403014101	CJTO. TAPON PRENSAESTOPAS TR 12X2					

CODE 33110

DESCRIPTION: PROJECTEUR EXTRAPLAT P. BOIS

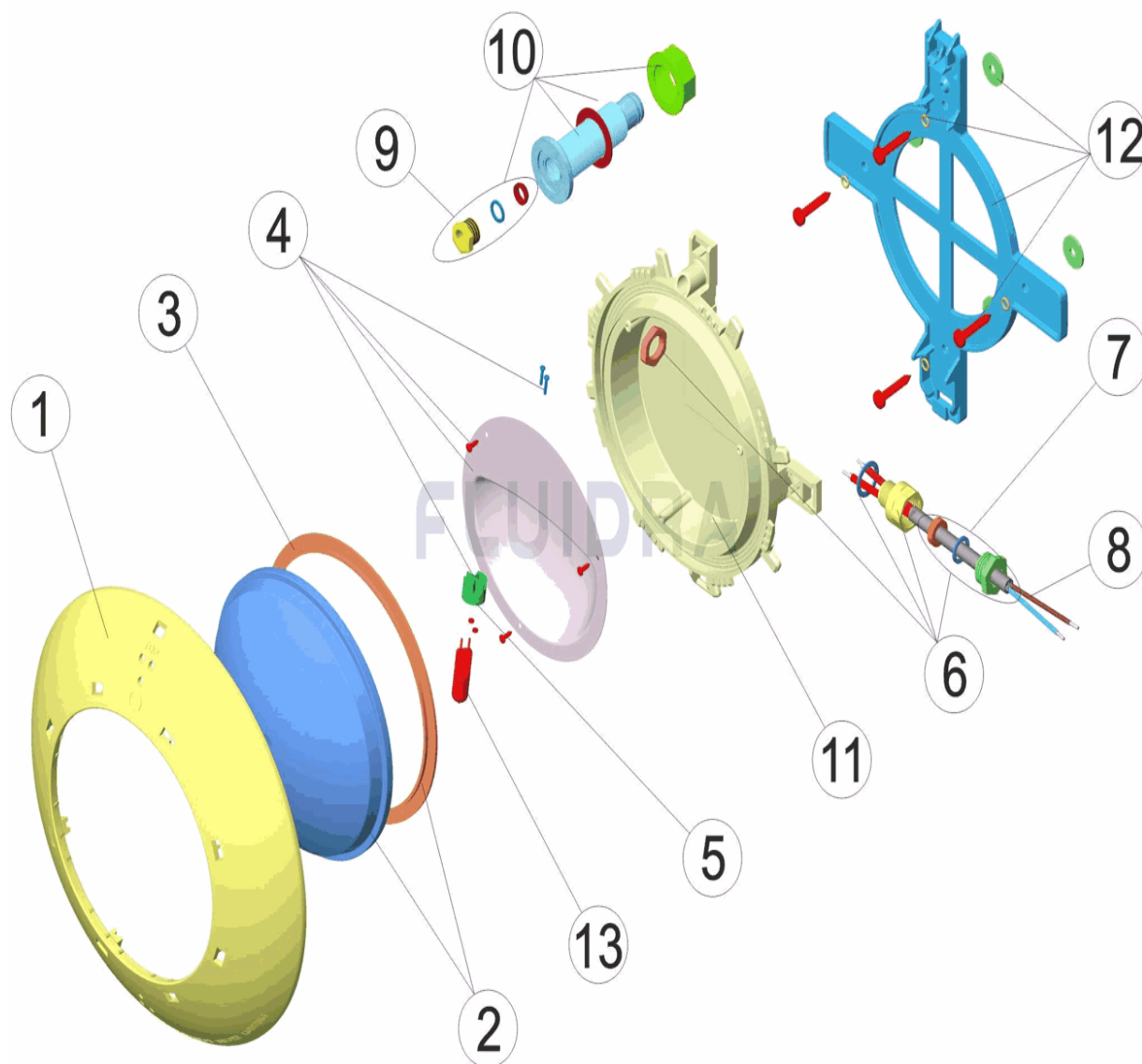


FRANCAIS

POS	CODE	DESCRIPTION	QUANTITE	POS	CODE	DESCRIPTION	QUANTITE
1	4403010067	ENJOLIVEUR PROJECTEUR		8	4403011905	CABLE DE PROJECTEUR	
2	4403012303	LENTE PROJECTEUR + JOINT		9	4403012704	PRESSE ETOUPE PG-9	
3	4403010102	JOINT SILICONE PROJECTEUR		10	4403010038	SAC DES COMPOSANTS POUR 33110	
4	4403011903	REFLECTEUR PORTE LAMPE		11	4403011908	CORPS DU PROJECTEUR	
5	4403011407	PORTE-LAMPE		12	4403010068	SUPPORT PROJECTEUR PLAT	
6	4403012302	ENSEMBLE PRESSE ÉTOUPE M-16 KT 19,€		13	00371	LAMPE 12 V. 100 W.	
7	4403014101	BOUCHON PRESSE ÉTOUPE 12X2					

CODE 33110

DESCRIPTION: SUPER-SLIM PROJECTOR WOODEN POOL

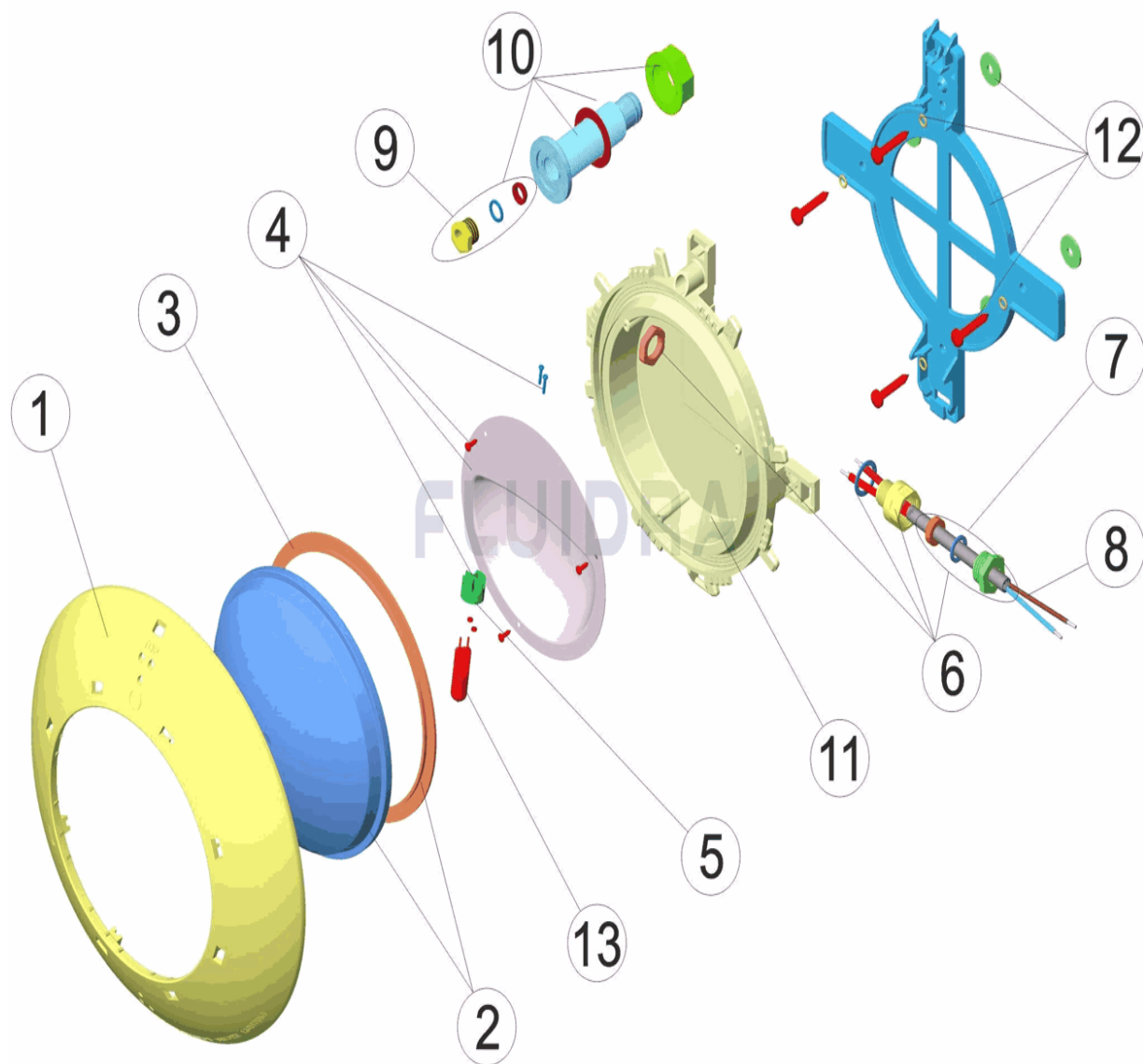


**ENGLISH**

POS	CODE	DESCRIPTION	QUANTITY	POS	CODE	DESCRIPTION	QUANTITY
1	4403010067	PROJECTOR TRIM		8	4403011905	LIGHT CABLE	
2	4403012303	CLEAR LENS + GASKET		9	4403012704	PACKING GLAND PG-9	
3	4403010102	LIGHT SILICON GASKET		10	4403010038	BAG COMPONENTS FOR 33110	
4	4403011903	LAMPHOLDER REFLECTOR PLATE		11	4403011908	LIGHT BODY	
5	4403011407	LAMP HOLDER		12	4403010068	SLIM PROJECTOR BRACKET	
6	4403012302	GLAND SEAL M-16 KT 19,5X2		13	00371	LIGHTBULB 12 V. 100 W.	
7	4403014101	KIT PLUG PACKING GLAND 12X2					

CODICE 33110

DESCRIZIONE: PROIETTORE EXTRAPIATTO PISCINA LEGNO

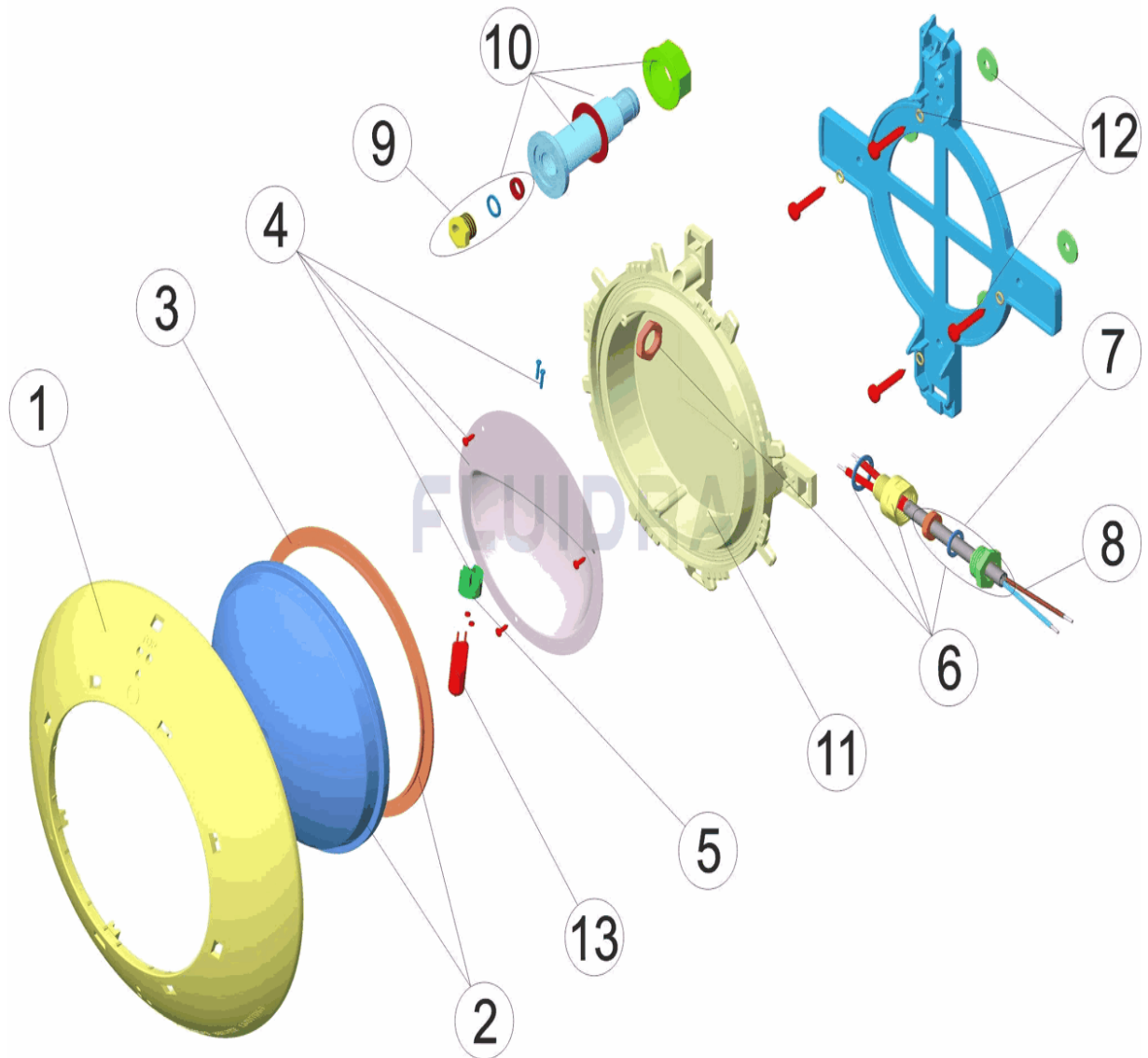


**ITALIANO**

POS	CODICE	DESCRIZIONE	QUANTITA'	POS	CODICE	DESCRIZIONE	QUANTITA'
1	4403010067	RIFINITURA FARO		8	4403011905	CAVO FARO	
2	4403012303	LENTE PROIETTORE + GUERNIZIONE		9	4403012704	PRESSACAVO PG-9	
3	4403010102	GUARNIZIONE SILICONE FARO		10	4403010038	BORSA COMPONENTI 33110	
4	4403011903	RIFLETTORE PORTALAMPADE		11	4403011908	CORPO FARO	
5	4403011407	PORTALAMPADE		12	4403010068	SUPPORTO FARO PIATTO	
6	4403012302	KIT PRESSACAVO M-16 KT 19,5X2		13	00371	LAMPADINA 12 V. 100 W.	
7	4403014101	KIT TAPPO					

CODE 33110

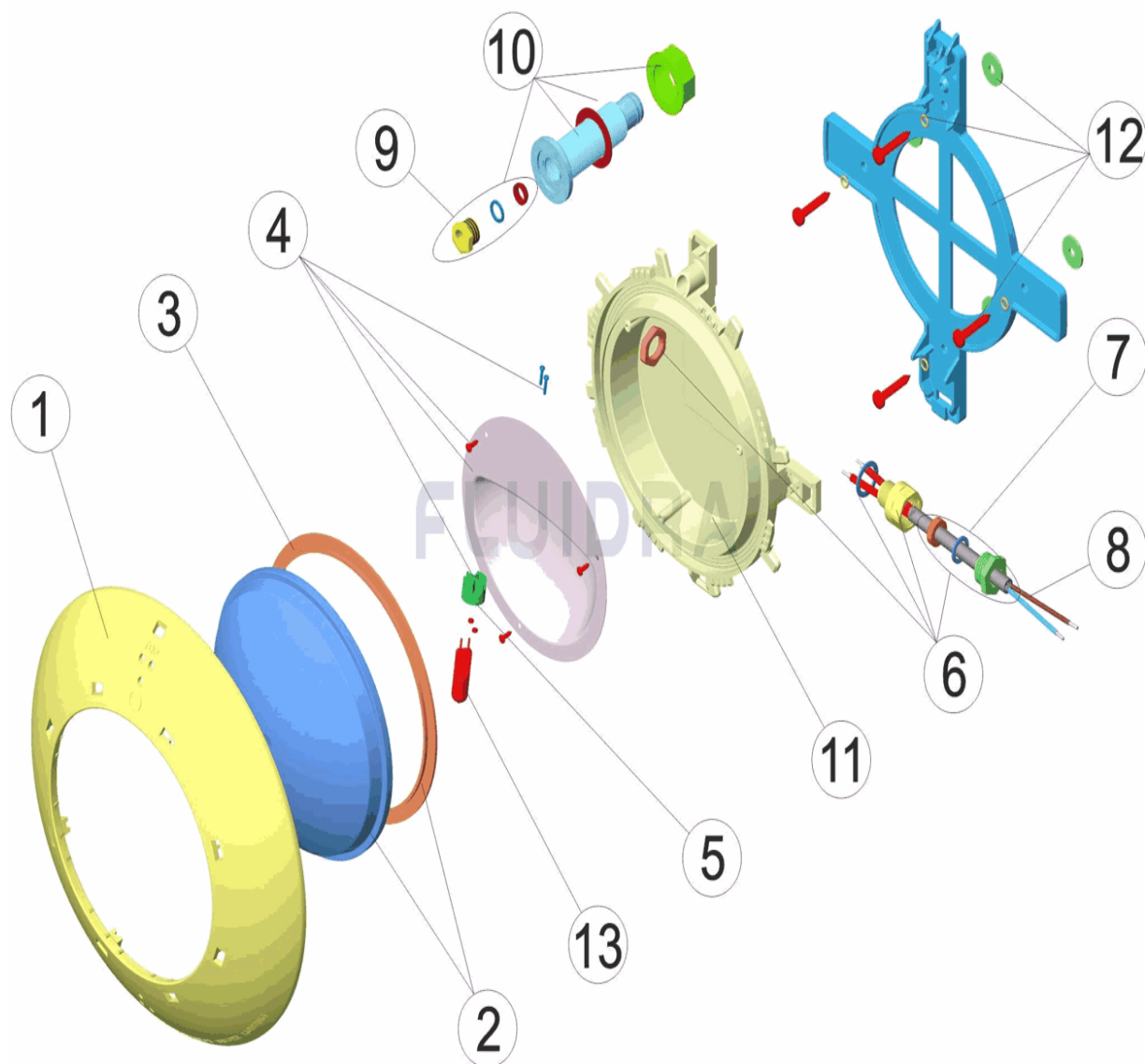
BESCHREIBUNG: UWS EXTRAFLACH P. HOLZ



**DEUTSCH**

POS	CODE	BESCHREIBUNG	MENGE	POS	CODE	BESCHREIBUNG	MENGE
1	4403010067	BLLENDE UWS		8	4403011905	UWS-KABEL	
2	4403012303	LINSE TRANSPARENT UND DICHUNG		9	4403012704	QUETSCHVERSCHRAUBUNG PG9	
3	4403010102	DICHTUNG SILIKON UWS		10	4403010038	PACK KOMPONENTEN FÜR 33110	
4	4403011903	REFLEKTOR LAMPENFASSUNG		11	4403011908	GEHÄUSE UWS	
5	4403011407	LAMPENFASSUNG		12	4403010068	HALTERUNG UWS FLACH	
6	4403012302	SET QUETSCHVERSCHRAUBUNG M-16 KT		13	00371	LAMPE HALOGEN 12 V 100 W	
7	4403014101	STOPFENSET QUETSCHVERSCHRAUBUN					

CODIGO **33110**

 DESCRIÇÃO: **PROJETOR EXTRAPLANO P. MADEIRA**

**PORTUGUES**

POS	CODIGO	DESCRIÇÃO	JANTIDADE	POS	CODIGO	DESCRIÇÃO	JANTIDADE
1	4403010067	ARO DECORATIVO PROJETOR		8	4403011905	CABO PROJECTOR	
2	4403012303	LENTE TRANSPARENTE + JUNTA		9	4403012704	BUCIN PG-9	
3	4403010102	JUNTA SILICONE PROTECTOR		10	4403010038	SACO DE COMPONENTES 33110	
4	4403011903	REFLECTOR PORTA-LÂMPADAS		11	4403011908	CORPO PROJETO	
5	4403011407	PORTA-LÂMPADA		12	4403010068	SUPORTE PROJETO PLANO	
6	4403012302	CONJUNTO BUCIM M-16 KT 19,5X2		13	00371	BOMBILHA 12 V. 100 W.	
7	4403014101	CJTO. TAMPÃO VEDANTE 12X2					