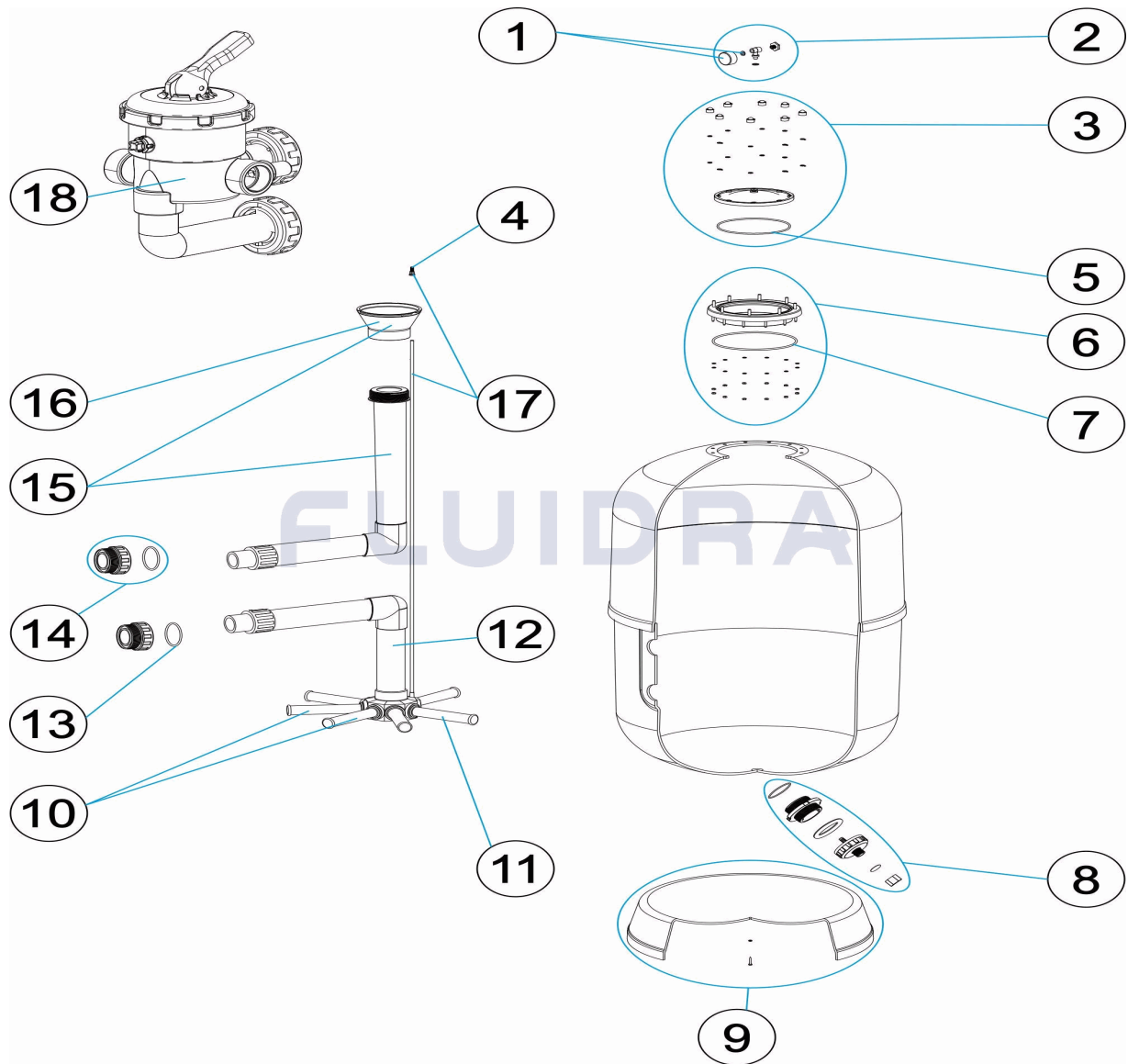


CODIGO FV08-500, FV08-600, FV08-750, FV08-900, FV08-900-2, FS08-500, FS08-600, FS08-750, FS08-900, FS08-900-2

DESCRIPCION: FILTRO LISBOA HIGH PERFORMANCE



ESPAÑOL

POS	CODIGO	DESCRIPCION	CANTIDAD	POS	CODIGO	DESCRIPCION	CANTIDAD
1	SP-04-0072	MANOMETRO 1/8" 3 KG/C "		10	* SP-04-0154	CJTO. BRAZOS COLECTOR D. 750	
2	SP-04-0071	MANOMETRO COMPLETO		11	* SP-04-0148	BRAZO COLECTOR 1" 110 M "	
3	SP-04-0131	TAPA FILTRO COMPLETA		11	* SP-04-0149	BRAZO COLECTOR 1" 175 M "	
4	SP-04-0129	PURGA AIRE		11	* SP-04-0147	BRAZO COLECTOR 1" 225 M "	
5	SP-04-0132	JUNTA TORICA 209X6		11	* SP-04-0150	BRAZO COLECTOR 1" 265 M "	
6	SP-04-0133	ARO CUELLO 20 TORNILLOS		12	* SP-04-0440	CJTO. COLECTOR D. 500	
7	SP-04-0134	JUNTA TORICA 255X4		12	* SP-04-0441	CJTO. COLECTOR D. 600	
8	SP-04-0439	DESCARGA ARENA-AGUA		12	* SP-04-0442	CJTO. COLECTOR D. 750	
9	* SP-04-0260	PIE FILTRO D.500		12	* SP-04-0443	CJTO. COLECTOR AST-L 900-2" T/ "	
9	* SP-04-0138	PIE FILTRO D. 600		12	* SP-04-0444	CJTO. COLECTOR AST-L 900-2 1/2" T/ "	
9	* SP-04-0139	PIE FILTRO D. 800		13	* SP-04-0253	JUNTA TORICA D. 60X8	
9	* SP-04-0251	PIE FILTRO D. 950		13	* SP-04-0291	JUNTA TORICA D. 70X5	



KIT

REV: 0

9163

FECHA: 08/06/2022

HOJA: 2/3

CODIGO FV08-500, FV08-600, FV08-750, FV08-900, FV08-900-2, FS08-500,
FS08-600, FS08-750, FS08-900, FS08-900-2

DESCRIPCION: FILTRO LISBOA HIGH PERFORMANCE

10	* SP-04-0151	CJTO. BRAZOS COLECTOR D. 400	14	* SP-04-0142	RACORD 1 ½" + JUNTA TORIC "
10	* SP-04-0152	CJTO. BRAZOS COLECTOR	14	* SP-04-0143	RACORD SALIDA 2" + JUNTA TORIC "
10	* SP-04-0201	CJTO. BRAZOS COLECTOR D. 650	14	* SP-04-0144	RACOR SALIDA 2 ½" + JUNTA TORIC "
15	* SP-04-0445	CJTO. DIFUSOR D. 500	16	* SP-04-0182	CONO DIFUSOR D.75
15	* SP-04-0446	CJTO. DIFUSOR D. 600	17	* SP-04-0184	PURGA AIRE + TUBO L=670
15	* SP-04-0447	CJTO. DIFUSOR D. 700	17	* SP-04-0185	TUBO RIGIDO L-845
15	* SP-04-0448	CJTO. DIFUSOR AST-L 900-2" T/ "	18	* PS-6103	VALVULA SELECTORA 1 ½"
15	* SP-04-0449	CJTO. DIFUSOR AST-L 900-2 ½" T/ "	18	* PS-6104	VALVULA SELECTORA CON ENLACES 2"
16	* SP-04-0180	CONO DIFUSOR D.50	18	* PS-6200	VALVULA SELECTORA 2 ½"
16	* SP-04-0181	CONO DIFUSOR D. 63			

CODIGO **FV08-500, FV08-600, FV08-750, FV08-900, FV08-900-2, FS08-500, FS08-600, FS08-750, FS08-900, FS08-900-2**

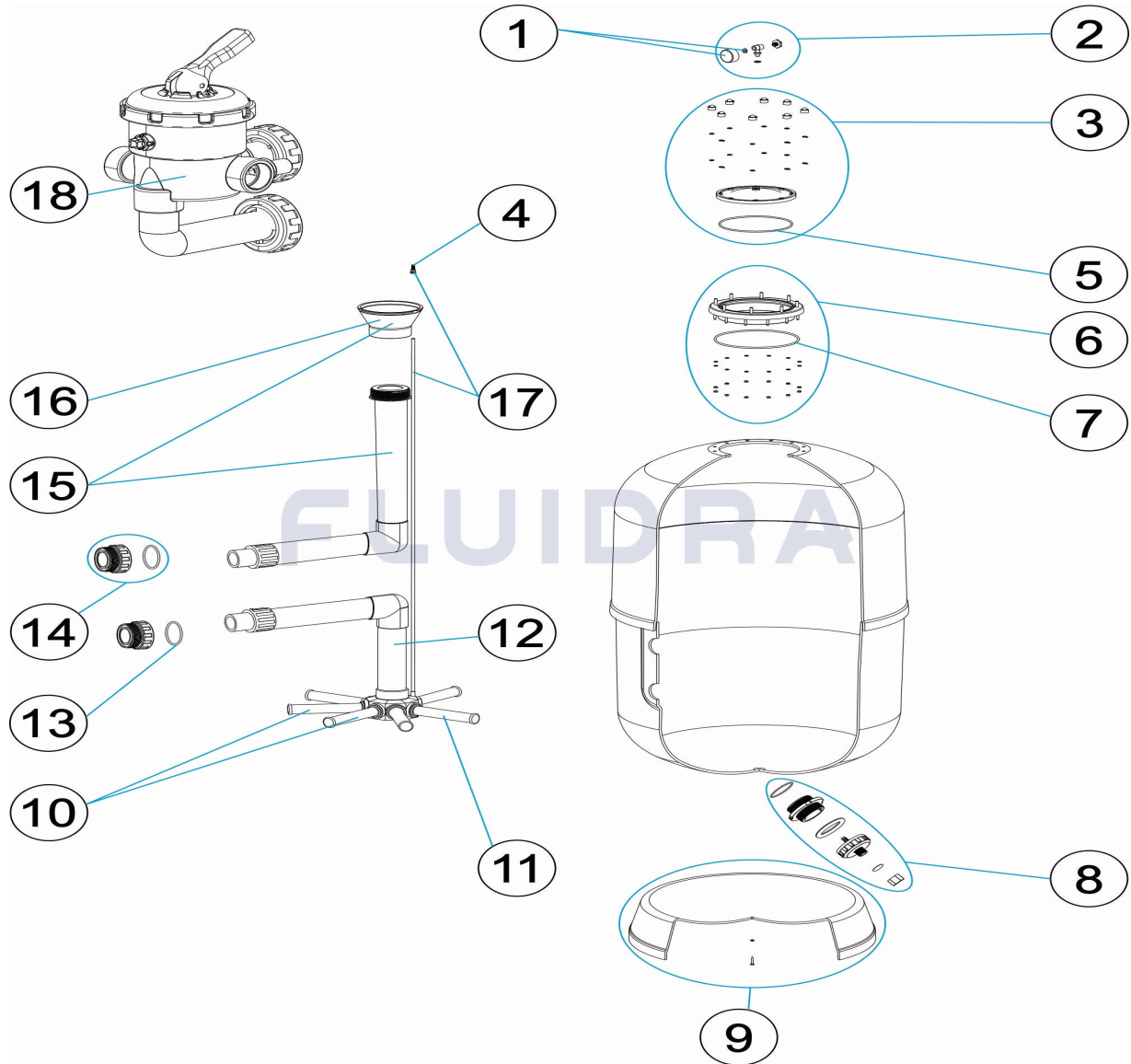
DESCRIPCION: FILTRO LISBOA HIGH PERFORMANCE

OBSERVACIONES

POS	CODIGO	OBSERVACIONES
9	* SP-04-0260	PARA: FV08-500, FS08-500
9	* SP-04-0138	PARA: FV08-600, FS08-600
9	* SP-04-0139	PARA: FV08-750, FS08-750
9	* SP-04-0251	PARA: FV08-900, FV08-900-2, FS08-900, FS08-900-2
10	* SP-04-0151	PARA: FV08-500, FS08-500
10	* SP-04-0152	PARA: FV08-600, FS08-600
10	* SP-04-0201	PARA: FV08-750, FS08-750
10	* SP-04-0154	PARA: FV08-900, FV08-900-2, FS08-900, FS08-900-2
11	* SP-04-0148	PARA: FV08-500 [4UNIDADES], FS08-500 [4UNIDADES]
11	* SP-04-0149	PARA: FV08-600 [4UNIDADES], FS08-600 [4UNIDADES]
11	* SP-04-0147	PARA: FV08-750 [6UNIDADES], FS08-750 [6UNIDADES]
11	* SP-04-0150	PARA: FV08-900 [6UNIDADES], FV08-900-2 [6UNIDADES], FS08-900 [6UNIDADES], FS08-900-2 [6UNIDADES]
12	* SP-04-0440	PARA: FV08-500, FS08-500
12	* SP-04-0441	PARA: FV08-600, FS08-600
12	* SP-04-0442	PARA: FV08-750, FS08-750
12	* SP-04-0443	PARA: FV08-900, FS08-900
12	* SP-04-0444	PARA: FV08-900-2, FS08-900-2
13	* SP-04-0253	PARA: FV08-500, FV08-600, FV08-750, FV08-900, FS08-500, FS08-600, FS08-750, FS08-900
13	* SP-04-0291	PARA: FV08-900-2, FS08-900-2
14	* SP-04-0142	PARA: FV08-500, FV08-600, FS08-500, FS08-600
14	* SP-04-0143	PARA: FV08-750, FV08-900, FS08-750, FS08-900
14	* SP-04-0144	PARA: FV08-900-2, FS08-900-2
15	* SP-04-0445	PARA: FV08-500, FS08-500
15	* SP-04-0446	PARA: FV08-600, FS08-600
15	* SP-04-0447	PARA: FV08-750, FS08-750
15	* SP-04-0448	PARA: FV08-900, FS08-900
15	* SP-04-0449	PARA: FV08-900-2, FS08-900-2
16	* SP-04-0180	PARA: FV08-500, FV08-600, FS08-500, FS08-600
16	* SP-04-0181	PARA: FV08-750, FV08-900, FS08-750, FS08-900
16	* SP-04-0182	PARA: FV08-900-2, FS08-900-2
17	* SP-04-0184	PARA: FV08-500, FV08-600, FV08-750, FS08-500, FS08-600, FS08-750
17	* SP-04-0185	PARA: FV08-900, FV08-900-2, FS08-900, FS08-900-2
18	* PS-6103	PARA: FV08-500, FV08-600
18	* PS-6104	PARA: FV08-750, FV08-900
18	* PS-6200	PARA: FV08-900-2

CODE **FV08-500, FV08-600, FV08-750, FV08-900, FV08-900-2, FS08-500, FS08-600, FS08-750, FS08-900, FS08-900-2**

DESCRIPTION: **FILTRE LISBOA HIGH PERFORMANCE**



FRANCAIS

POS	CODE	DESCRIPTION	QUANTITE	POS	CODE	DESCRIPTION	QUANTITE
1	SP-04-0072	MANOMETRE 1/8" 3 KG./C "		10	* SP-04-0154	ENSEMBLE BRAS DE REPARTITEUR D. 750	
2	SP-04-0071	MANOMETRE COMPLET		11	* SP-04-0148	BRAS DE REPARTITEUR 1" 110 M "	
3	SP-04-0131	COUVERCLE DE FILTRE COMPLETE		11	* SP-04-0149	BRAS DE REPARTITEUR 1" 175 M "	
4	SP-04-0129	PURGE D'AIR		11	* SP-04-0147	BRAS DE REPARTITEUR 1" 225 M "	
5	SP-04-0132	JOINT TORIQUE 209X6		11	* SP-04-0150	BRAS DE REPARTITEUR 1" 265 M/M "	
6	SP-04-0133	BRIDE GORGE 20 VIS		12	* SP-04-0440	ENSEMBLE COLLECTEUR D. 500	
7	SP-04-0134	JOINT TORIQUE 255X4		12	* SP-04-0441	ENSEMBLE COLLECTEUR D. 600	
8	SP-04-0439	DÉCHARGE DE SABLE - EAU		12	* SP-04-0442	ENSEMBLE COLLECTEUR D. 750	
9	* SP-04-0260	SOCLE FILTRE D. 500		12	* SP-04-0443	ENSEMBLE COLLECTEUR AST-L 900-2" T/ "	
9	* SP-04-0138	SOCLE FILTRE D 600		12	* SP-04-0444	ENSEMBLE COLLECTEUR AST-L 900-2 ½" T	
9	* SP-04-0139	SOCLE FILTRE D. 800		13	* SP-04-0253	JOINT TORIQUE D 60X8	
9	* SP-04-0251	SOCLE FILTRE D. 950		13	* SP-04-0291	JOINT TORIQUE D 70X5	

CODE **FV08-500, FV08-600, FV08-750, FV08-900, FV08-900-2, FS08-500,
FS08-600, FS08-750, FS08-900, FS08-900-2**

DESCRIPTION: **FILTRE LISBOA HIGH PERFORMANCE**

10	* SP-04-0151	ENSEMBLE BRAS DE REPARTITEUR D. 400	14	* SP-04-0142	RACCORD 1 1/2" + JOINT TORIQU "
10	* SP-04-0152	ENSEMBLE BRAS DE REPARTITEUR	14	* SP-04-0143	RACCORD SORTIE 2" + JOINT TORIQU "
10	* SP-04-0201	ENSEMBLE BRAS DE REPARTITEUR D. 650	14	* SP-04-0144	RACCOR SORTIE 2 1/2" + JOINT TORIQU "
15	* SP-04-0445	ENSEMBLE DIFFUSEUR D. 500	16	* SP-04-0182	DIFUSOR CONIQUE SUPÉRIOR D. 75
15	* SP-04-0446	ENSEMBLE DIFFUSEUR D. 600	17	* SP-04-0184	PURGE AIR + TUBE L=670
15	* SP-04-0447	ENSEMBLE DIFFUSEUR D. 700	17	* SP-04-0185	TUBE RIGIDE L-845
15	* SP-04-0448	ENSEMBLE DIFFUSEUR AST-L 900-2" T/ "	18	* PS-6103	SÉLECTEUR 1 ½"
15	* SP-04-0449	ENSEMBLE DIFFUSEUR AST-L 900-2 ½" T/ '	18	* PS-6104	SÉLECTEUR AVEC LIENS 2"
16	* SP-04-0180	DIFUSOR CONIQUE SUPÉRIOR D. 50	18	* PS-6200	SÉLECTEUR 2 ½"
16	* SP-04-0181	DIFUSOR CONIQUE SUPÉRIOR D. 63			

CODE **FV08-500, FV08-600, FV08-750, FV08-900, FV08-900-2, FS08-500, FS08-600, FS08-750, FS08-900, FS08-900-2**

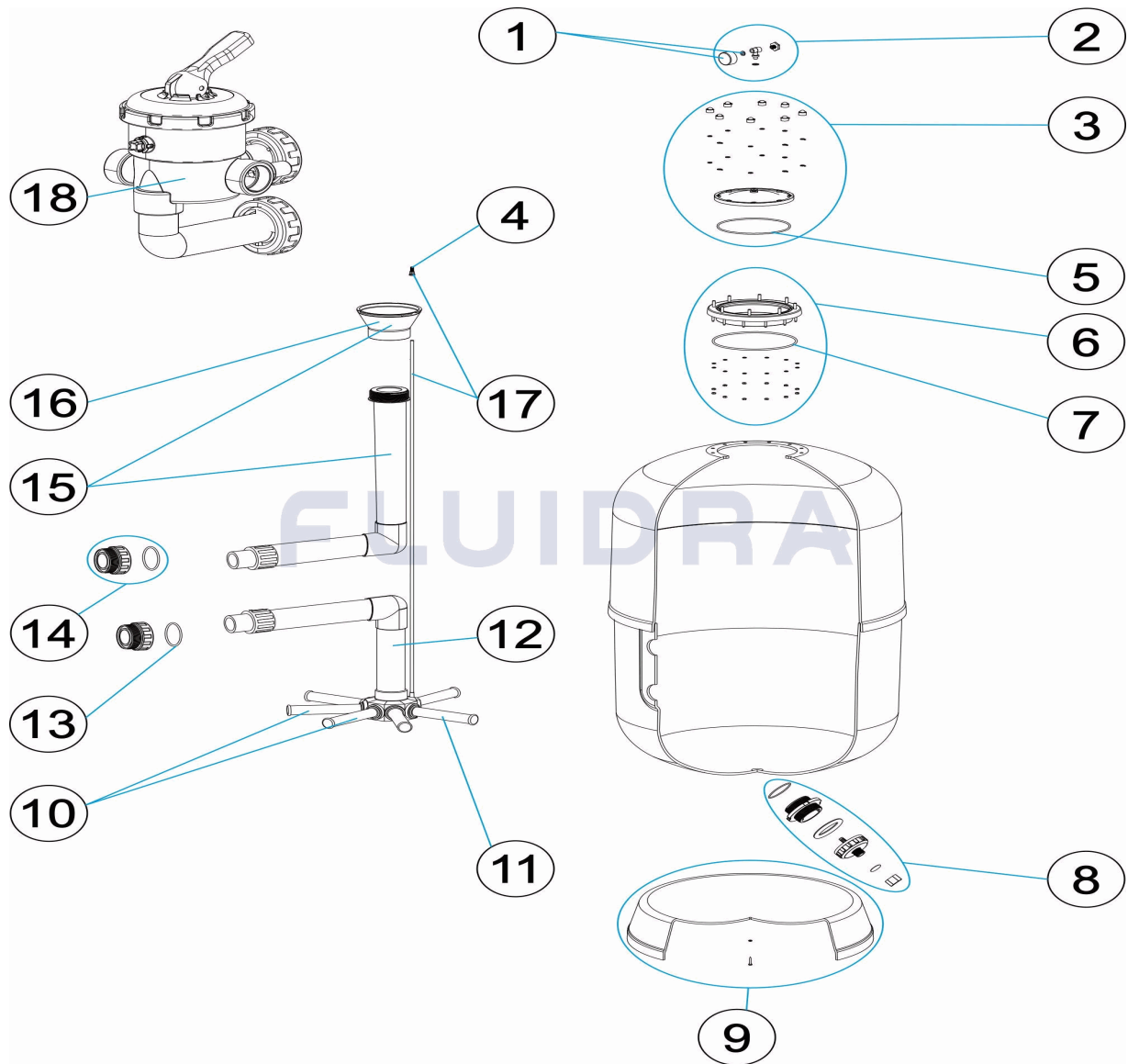
DESCRIPTION: **FILTRE LISBOA HIGH PERFORMANCE**

OBSERVATIONS

POS	CODE	OBSERVATIONS
9	* SP-04-0260	POUR: FV08-500, FS08-500
9	* SP-04-0138	POUR: FV08-600, FS08-600
9	* SP-04-0139	POUR: FV08-750, FS08-750
9	* SP-04-0251	POUR: FV08-900, FV08-900-2, FS08-900, FS08-900-2
10	* SP-04-0151	POUR: FV08-500, FS08-500
10	* SP-04-0152	POUR: FV08-600, FS08-600
10	* SP-04-0201	POUR: FV08-750, FS08-750
10	* SP-04-0154	POUR: FV08-900, FV08-900-2, FS08-900, FS08-900-2
11	* SP-04-0148	POUR: FV08-500 [4UT], FS08-500 [4UT]
11	* SP-04-0149	POUR: FV08-600 [4UT], FS08-600 [4UT]
11	* SP-04-0147	POUR: FV08-750 [6UT], FS08-750 [6UT]
11	* SP-04-0150	POUR: FV08-900 [6UT], FV08-900-2 [6UT], FS08-900 [6UT], FS08-900-2 [6UT]
12	* SP-04-0440	POUR: FV08-500, FS08-500
12	* SP-04-0441	POUR: FV08-600, FS08-600
12	* SP-04-0442	POUR: FV08-750, FS08-750
12	* SP-04-0443	POUR: FV08-900, FS08-900
12	* SP-04-0444	POUR: FV08-900-2, FS08-900-2
13	* SP-04-0253	POUR: FV08-500, FV08-600, FV08-750, FV08-900, FS08-500, FS08-600, FS08-750, FS08-900
13	* SP-04-0291	POUR: FV08-900-2, FS08-900-2
14	* SP-04-0142	POUR: FV08-500, FV08-600, FS08-500, FS08-600
14	* SP-04-0143	POUR: FV08-750, FV08-900, FS08-750, FS08-900
14	* SP-04-0144	POUR: FV08-900-2, FS08-900-2
15	* SP-04-0445	POUR: FV08-500, FS08-500
15	* SP-04-0446	POUR: FV08-600, FS08-600
15	* SP-04-0447	POUR: FV08-750, FS08-750
15	* SP-04-0448	POUR: FV08-900, FS08-900
15	* SP-04-0449	POUR: FV08-900-2, FS08-900-2
16	* SP-04-0180	POUR: FV08-500, FV08-600, FS08-500, FS08-600
16	* SP-04-0181	POUR: FV08-750, FV08-900, FS08-750, FS08-900
16	* SP-04-0182	POUR: FV08-900-2, FS08-900-2
17	* SP-04-0184	POUR: FV08-500, FV08-600, FV08-750, FS08-500, FS08-600, FS08-750
17	* SP-04-0185	POUR: FV08-900, FV08-900-2, FS08-900, FS08-900-2
18	* PS-6103	POUR: FV08-500, FV08-600
18	* PS-6104	POUR: FV08-750, FV08-900
18	* PS-6200	POUR: FV08-900-2

CODE **FV08-500, FV08-600, FV08-750, FV08-900, FV08-900-2, FS08-500, FS08-600, FS08-750, FS08-900, FS08-900-2**

DESCRIPTION: **LISBOA FILTER HIGH PERFORMANCE**



ENGLISH

POS	CODE	DESCRIPTION	QUANTITY	POS	CODE	DESCRIPTION	QUANTITY
1	SP-04-0072	PRESSURE GAUGE 1/8" 3 KG./C "		10	* SP-04-0154	MANIFOLD ARM ASSEMBLY D. 750	
2	SP-04-0071	COMPLETE PRESSURE GAUGE UNIT		11	* SP-04-0148	MANIFOLD ARM 1" 110 M "	
3	SP-04-0131	FILTER LID UNIT		11	* SP-04-0149	MANIFOLD ARM 1" 175 M "	
4	SP-04-0129	AIR PURGE		11	* SP-04-0147	MANIFOLD ARM 1" 225 M "	
5	SP-04-0132	209 X 6 O'RING		11	* SP-04-0150	COLLECTOR ARM 1" 265 M "	
6	SP-04-0133	20-SCREW NECK RING		12	* SP-04-0440	MANIFOLD ASSEMBLY D. 500	
7	SP-04-0134	O' RING 255X4		12	* SP-04-0441	MANIFOLD ASSEMBLY D. 600	
8	SP-04-0439	SAND - WATER UNLOAD		12	* SP-04-0442	MANIFOLD ASSEMBLY D. 750	
9	* SP-04-0260	FILTER BASE D. 500		12	* SP-04-0443	MANIFOLD ASSEMBLY AST-L 900-2" T/ "	
9	* SP-04-0138	FILTER BASE D. 600		12	* SP-04-0444	MANIFOLD ASSEMBLY AST-L 900-2 1/2" T/ "	
9	* SP-04-0139	FILTER BASE D. 800		13	* SP-04-0253	O' RING D. 60X8	
9	* SP-04-0251	FILTER BASE D. 950		13	* SP-04-0291	O' RING D. 70X5	



PARTS BREAKDOWN

REV.: 0
DATE: 08/06/2022
SHEET: 2/3

9163

CODE **FV08-500, FV08-600, FV08-750, FV08-900, FV08-900-2, FS08-500,
FS08-600, FS08-750, FS08-900, FS08-900-2**

DESCRIPTION: **LISBOA FILTER HIGH PERFORMANCE**

10	* SP-04-0151	MANIFOLD ARM ASSEMBLY D. 400	14	* SP-04-0142	FITTING 1 1/2" + O'RIN "
10	* SP-04-0152	MANIFOLD ARM ASSEMBLY	14	* SP-04-0143	2" OUTLET FITTING + O'RIN "
10	* SP-04-0201	MANIFOLD ARM ASSEMBLY D. 650	14	* SP-04-0144	OUTLET UNION 2 1/2" + O-RIN "
15	* SP-04-0445	DIFFUSER ASSEMBLY D. 500	16	* SP-04-0182	DIFFUSER CONE D. 75
15	* SP-04-0446	DIFFUSER ASSEMBLY D. 600	17	* SP-04-0184	AIR PURGE + PIPE L=670
15	* SP-04-0447	DIFFUSER ASSEMBLY D. 700	17	* SP-04-0185	RIGID PIPE L-845
15	* SP-04-0448	DIFFUSER ASSEMBLY AST-L 900-2" T/ "	18	* PS-6103	MULTIPOINT VALVE 1 1/2"
15	* SP-04-0449	DIFFUSER ASSEMBLY AST-L 900-2 1/2" T/ "	18	* PS-6104	SELECTOR VALVE WITH LINKS 2"
16	* SP-04-0180	DIFFUSER CONE D. 50	18	* PS-6200	MULTIPOINT VALVE 2 1/2"
16	* SP-04-0181	DIFFUSER CONE D. 63			

* SEE OBSERVATIONS SHEET



PARTS BREAKDOWN

REV.: 0
DATE: 08/06/2022
SHEET: 3/3

9163

CODE **FV08-500, FV08-600, FV08-750, FV08-900, FV08-900-2, FS08-500,
FS08-600, FS08-750, FS08-900, FS08-900-2**

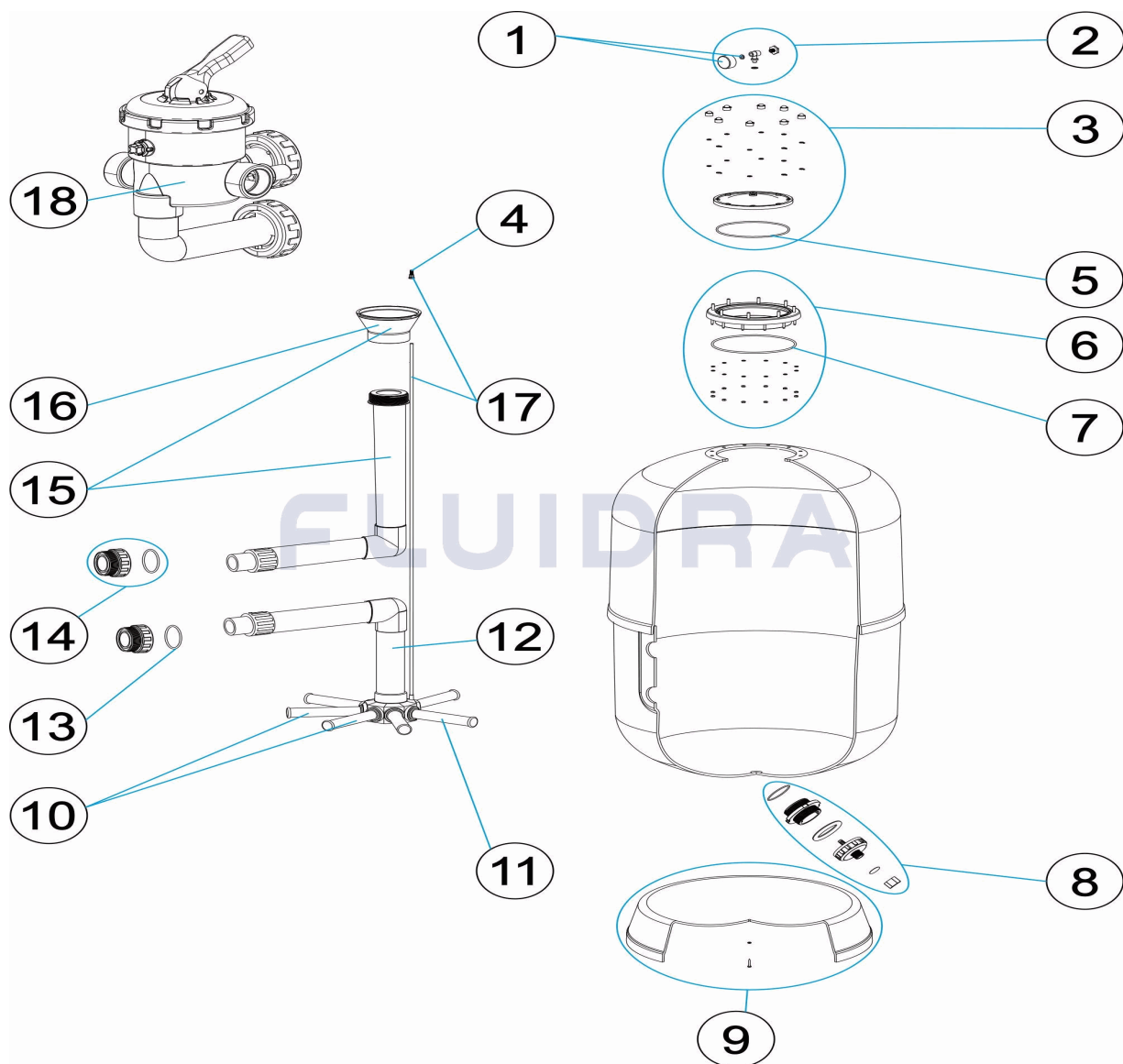
DESCRIPTION: **LISBOA FILTER HIGH PERFORMANCE**

OBSERVATIONS

POS	CODE	OBSERVATIONS
9	* SP-04-0260	FOR: FV08-500, FS08-500
9	* SP-04-0138	FOR: FV08-600, FS08-600
9	* SP-04-0139	FOR: FV08-750, FS08-750
9	* SP-04-0251	FOR: FV08-900, FV08-900-2, FS08-900, FS08-900-2
10	* SP-04-0151	FOR: FV08-500, FS08-500
10	* SP-04-0152	FOR: FV08-600, FS08-600
10	* SP-04-0201	FOR: FV08-750, FS08-750
10	* SP-04-0154	FOR: FV08-900, FV08-900-2, FS08-900, FS08-900-2
11	* SP-04-0148	FOR: FV08-500 [4UT], FS08-500 [4UT]
11	* SP-04-0149	FOR: FV08-600 [4UT], FS08-600 [4UT]
11	* SP-04-0147	FOR: FV08-750 [6UT], FS08-750 [6UT]
11	* SP-04-0150	FOR: FV08-900 [6UT], FV08-900-2 [6UT], FS08-900 [6UT], FS08-900-2 [6UT]
12	* SP-04-0440	FOR: FV08-500, FS08-500
12	* SP-04-0441	FOR: FV08-600, FS08-600
12	* SP-04-0442	FOR: FV08-750, FS08-750
12	* SP-04-0443	FOR: FV08-900, FS08-900
12	* SP-04-0444	FOR: FV08-900-2, FS08-900-2
13	* SP-04-0253	FOR: FV08-500, FV08-600, FV08-750, FV08-900, FS08-500, FS08-600, FS08-750, FS08-900
13	* SP-04-0291	FOR: FV08-900-2, FS08-900-2
14	* SP-04-0142	FOR: FV08-500, FV08-600, FS08-500, FS08-600
14	* SP-04-0143	FOR: FV08-750, FV08-900, FS08-750, FS08-900
14	* SP-04-0144	FOR: FV08-900-2, FS08-900-2
15	* SP-04-0445	FOR: FV08-500, FS08-500
15	* SP-04-0446	FOR: FV08-600, FS08-600
15	* SP-04-0447	FOR: FV08-750, FS08-750
15	* SP-04-0448	FOR: FV08-900, FS08-900
15	* SP-04-0449	FOR: FV08-900-2, FS08-900-2
16	* SP-04-0180	FOR: FV08-500, FV08-600, FS08-500, FS08-600
16	* SP-04-0181	FOR: FV08-750, FV08-900, FS08-750, FS08-900
16	* SP-04-0182	FOR: FV08-900-2, FS08-900-2
17	* SP-04-0184	FOR: FV08-500, FV08-600, FV08-750, FS08-500, FS08-600, FS08-750
17	* SP-04-0185	FOR: FV08-900, FV08-900-2, FS08-900, FS08-900-2
18	* PS-6103	FOR: FV08-500, FV08-600
18	* PS-6104	FOR: FV08-750, FV08-900
18	* PS-6200	FOR: FV08-900-2

CODICE **FV08-500, FV08-600, FV08-750, FV08-900, FV08-900-2, FS08-500, FS08-600, FS08-750, FS08-900, FS08-900-2**

DESCRIZIONE: **FILTRI LISBOA HIGH PERFORMANCE**



ITALIANO

POS	CODICE	DESCRIZIONE	QUANTITA'	POS	CODICE	DESCRIZIONE	QUANTITA'
1	SP-04-0072	MANOMETRO 1/8" 3 KG./C "		10	* SP-04-0154	GRUPPO CANDELOTTO COLLECTORE D. 7	
2	SP-04-0071	MANOMETRO COMPLETO		11	* SP-04-0148	CANDELOTTO COLLECTORE 1" 110 M "	
3	SP-04-0131	COPERCHIO FILTRO COMPLETO		11	* SP-04-0149	CANDELOTTO COLLECTORE 1" 175 M "	
4	SP-04-0129	SFIATO ARIA		11	* SP-04-0147	CANDELOTTO COLLECTORE 1" 225 M "	
5	SP-04-0132	O-RING 209X6		11	* SP-04-0150	CANDELOTTO 1" 265 M/M "	
6	SP-04-0133	ANELLO COLLO 20 VITI		12	* SP-04-0440	KIT COLLETTORE D. 500	
7	SP-04-0134	O-RING 255X4		12	* SP-04-0441	KIT COLLETTORE D. 600	
8	SP-04-0439	SCARICA SABBIA - ACQUA		12	* SP-04-0442	KIT COLLETTORE D. 750	
9	* SP-04-0260	BASE FILTRO D. 500		12	* SP-04-0443	KIT COLLETTORE AST-L 900-2" T/ "	
9	* SP-04-0138	BASE FILTRO D 600		12	* SP-04-0444	KIT COLLETTORE AST-L 900-2 1/2" T/ "	
9	* SP-04-0139	BASE FILTRO D. 800		13	* SP-04-0253	O-RING D 60X8	
9	* SP-04-0251	BASE FILTRO D. 950		13	* SP-04-0291	O-RING D 70X5	

CODICE **FV08-500, FV08-600, FV08-750, FV08-900, FV08-900-2, FS08-500, FS08-600, FS08-750, FS08-900, FS08-900-2**

DESCRIZIONE: FILTRI LISBOA HIGH PERFORMANCE

10	* SP-04-0151	GRUPPO CANDELOTTO COLLECTORE D. 4	14	* SP-04-0142	RACCORDO 1 1/2" + O-RIN "
10	* SP-04-0152	GRUPPO CANDELOTTO COLLECTORE	14	* SP-04-0143	RACCORDO USCITA 2" + O-RING
10	* SP-04-0201	GRUPPO CANDELOTTO COLLECTORE D. 6	14	* SP-04-0144	RACCORDO USCITA 2 1/2" + O-RIN "
15	* SP-04-0445	RACCORDO DIFFUSORE D. 500	16	* SP-04-0182	CONO DIFFUSORE D. 75
15	* SP-04-0446	RACCORDO DIFFUSORE D. 600	17	* SP-04-0184	SPURGO ARIA + TUBO L=670
15	* SP-04-0447	RACCORDO DIFFUSORE D. 700	17	* SP-04-0185	TUBO RIGIDO L-845
15	* SP-04-0448	RACCORDO DIFFUSORE AST-L 900-2" T/ "	18	* PS-6103	VALVOLA SELETRICE 1 1/2"
15	* SP-04-0449	RACCORDO DIFFUSORE AST-L 900-2 1/2" T/	18	* PS-6104	VALVOLA SELETRICE CON COLLEGAMEN
16	* SP-04-0180	CONO DIFFUSORE D. 50	18	* PS-6200	VALVOLA SELETRICE 2 1/2"
16	* SP-04-0181	CONO DIFFUSORE D. 63			

CODICE **FV08-500, FV08-600, FV08-750, FV08-900, FV08-900-2, FS08-500, FS08-600, FS08-750, FS08-900, FS08-900-2**

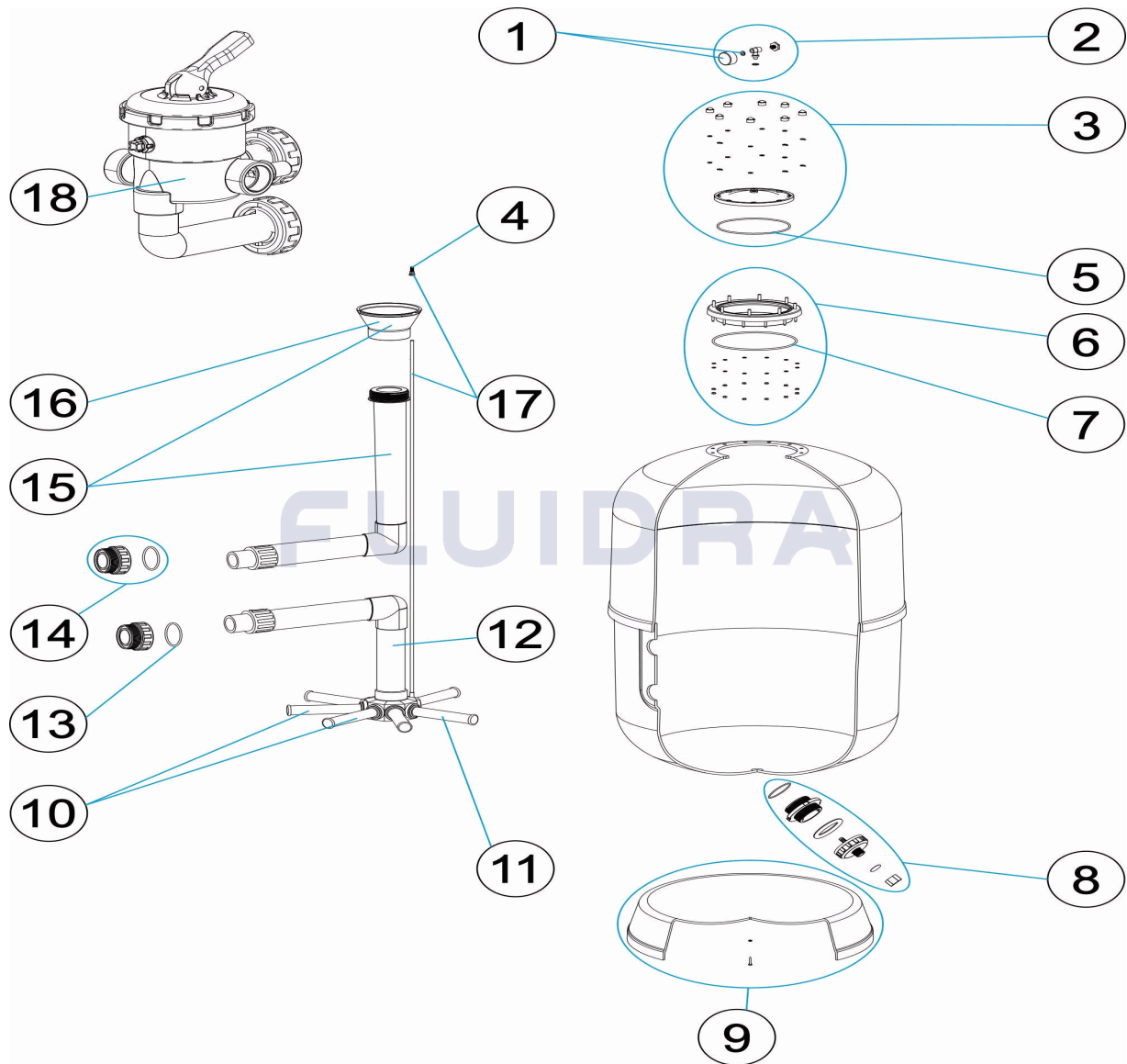
DESCRIZIONE: FILTRI LISBOA HIGH PERFORMANCE

OSSERVAZIONI

POS	CODICE	OSSERVAZIONI
9	* SP-04-0260	PER: FV08-500, FS08-500
9	* SP-04-0138	PER: FV08-600, FS08-600
9	* SP-04-0139	PER: FV08-750, FS08-750
9	* SP-04-0251	PER: FV08-900, FV08-900-2, FS08-900, FS08-900-2
10	* SP-04-0151	PER: FV08-500, FS08-500
10	* SP-04-0152	PER: FV08-600, FS08-600
10	* SP-04-0201	PER: FV08-750, FS08-750
10	* SP-04-0154	PER: FV08-900, FV08-900-2, FS08-900, FS08-900-2
11	* SP-04-0148	PER: FV08-500 [4UT], FS08-500 [4UT]
11	* SP-04-0149	PER: FV08-600 [4UT], FS08-600 [4UT]
11	* SP-04-0147	PER: FV08-750 [6UT], FS08-750 [6UT]
11	* SP-04-0150	PER: FV08-900 [6UT], FV08-900-2 [6UT], FS08-900 [6UT], FS08-900-2 [6UT]
12	* SP-04-0440	PER: FV08-500, FS08-500
12	* SP-04-0441	PER: FV08-600, FS08-600
12	* SP-04-0442	PER: FV08-750, FS08-750
12	* SP-04-0443	PER: FV08-900, FS08-900
12	* SP-04-0444	PER: FV08-900-2, FS08-900-2
13	* SP-04-0253	PER: FV08-500, FV08-600, FV08-750, FV08-900, FS08-500, FS08-600, FS08-750, FS08-900
13	* SP-04-0291	PER: FV08-900-2, FS08-900-2
14	* SP-04-0142	PER: FV08-500, FV08-600, FS08-500, FS08-600
14	* SP-04-0143	PER: FV08-750, FV08-900, FS08-750, FS08-900
14	* SP-04-0144	PER: FV08-900-2, FS08-900-2
15	* SP-04-0445	PER: FV08-500, FS08-500
15	* SP-04-0446	PER: FV08-600, FS08-600
15	* SP-04-0447	PER: FV08-750, FS08-750
15	* SP-04-0448	PER: FV08-900, FS08-900
15	* SP-04-0449	PER: FV08-900-2, FS08-900-2
16	* SP-04-0180	PER: FV08-500, FV08-600, FS08-500, FS08-600
16	* SP-04-0181	PER: FV08-750, FV08-900, FS08-750, FS08-900
16	* SP-04-0182	PER: FV08-900-2, FS08-900-2
17	* SP-04-0184	PER: FV08-500, FV08-600, FV08-750, FS08-500, FS08-600, FS08-750
17	* SP-04-0185	PER: FV08-900, FV08-900-2, FS08-900, FS08-900-2
18	* PS-6103	PER: FV08-500, FV08-600
18	* PS-6104	PER: FV08-750, FV08-900
18	* PS-6200	PER: FV08-900-2

CODE **FV08-500, FV08-600, FV08-750, FV08-900, FV08-900-2, FS08-500, FS08-600, FS08-750, FS08-900, FS08-900-2**

BESCHREIBUNG: **FILTER LISBOA HIGH PERFORMANCE**



DEUTSCH

POS	CODE	BESCHREIBUNG	MENGE	POS	CODE	BESCHREIBUNG	MENGE
1	SP-04-0072	MANOMETER 1/8" 3 KG/C "		10	* SP-04-0154	SET FILTERSTERN-SCHLITZROHR D. 750	
2	SP-04-0071	MANOMETER KOMPLETT		11	* SP-04-0148	FILTERSTERN-SCHLITZROHR 1" 110 M "	
3	SP-04-0131	FILTERDECKEL KOMPLETT		11	* SP-04-0149	FILTERSTERN-SCHLITZROHR 1" 175 M "	
4	SP-04-0129	ENTLÜFTUNG		11	* SP-04-0147	FILTERSTERN-SCHLITZROHR 1" 225 M "	
5	SP-04-0132	O-RING 209 X 6		11	* SP-04-0150	FILTERSTERN-SCHLITZROHR 1" 265 M "	
6	SP-04-0133	FILTERRING 20 SCHRAUBEN		12	* SP-04-0440	SAMMELROHRSET D. 500	
7	SP-04-0134	O-RING 255 X 4		12	* SP-04-0441	SAMMELROHRSET D. 600	
8	SP-04-0439	SANDAUSLASS - ABLASS		12	* SP-04-0442	SAMMELROHRSET D. 750	
9	* SP-04-0260	FILTERFUSS D. 500		12	* SP-04-0443	SAMMELROHRSET AST-L 900-2" T/ "	
9	* SP-04-0138	FILTERFUSS D. 600		12	* SP-04-0444	SAMMELROHRSET AST-L 900-2 ½" T/ "	
9	* SP-04-0139	FILTERFUSS D. 800		13	* SP-04-0253	O-RING D. 60 X 8	
9	* SP-04-0251	FILTERFUSS D. 950		13	* SP-04-0291	O-RING D. 70 X 5	



EINZELTEILE

ÜBER.: 0

9163

DATUM: 08/06/2022

BLATT: 2/3

CODE **FV08-500, FV08-600, FV08-750, FV08-900, FV08-900-2, FS08-500,
FS08-600, FS08-750, FS08-900, FS08-900-2**

BESCHREIBUNG: **FILTER LISBOA HIGH PERFORMANCE**

10	* SP-04-0151	SET FILTERSTERN-SCHLITZROHR D. 400	14	* SP-04-0142	GEWINDESTÜCK 1 1/2" UND O-RIN "
10	* SP-04-0152	SET FILTERSTERN-SCHLITZROHR	14	* SP-04-0143	GEWINDESTÜCK AUSGANG 2" UND O-RIN '
10	* SP-04-0201	SET FILTERSTERN-SCHLITZROHR D. 650	14	* SP-04-0144	GEWINDESTÜCK AUSGANG 2 1/2" UND O-F
15	* SP-04-0445	SET WASSERVERTEILER D. 500	16	* SP-04-0182	KEGEL WASSERVERTEILER D. 75
15	* SP-04-0446	SET WASSERVERTEILER D. 600	17	* SP-04-0184	ENTLÜFTUNG UND ROHR L=670
15	* SP-04-0447	SET WASSERVERTEILER D. 700	17	* SP-04-0185	ROHR HART L - 845
15	* SP-04-0448	SET WASSERVERTEILER AST-L 900-2" T/ "	18	* PS-6103	MEHRWEGVENTIL 1 1/2"
15	* SP-04-0449	SET WASSERVERTEILER AST-L 900-2 "	18	* PS-6104	MEHRWEGVENTIL MIT ANSCHLÜSSEN 2"
16	* SP-04-0180	KEGEL WASSERVERTEILER D. 50	18	* PS-6200	WECHSELVENTIL 2 1/2"
16	* SP-04-0181	KEGEL WASSERVERTEILER D. 63			

* SIEHE ANMERKUNGSBLATT

CODE **FV08-500, FV08-600, FV08-750, FV08-900, FV08-900-2, FS08-500,**
 FS08-600, FS08-750, FS08-900, FS08-900-2

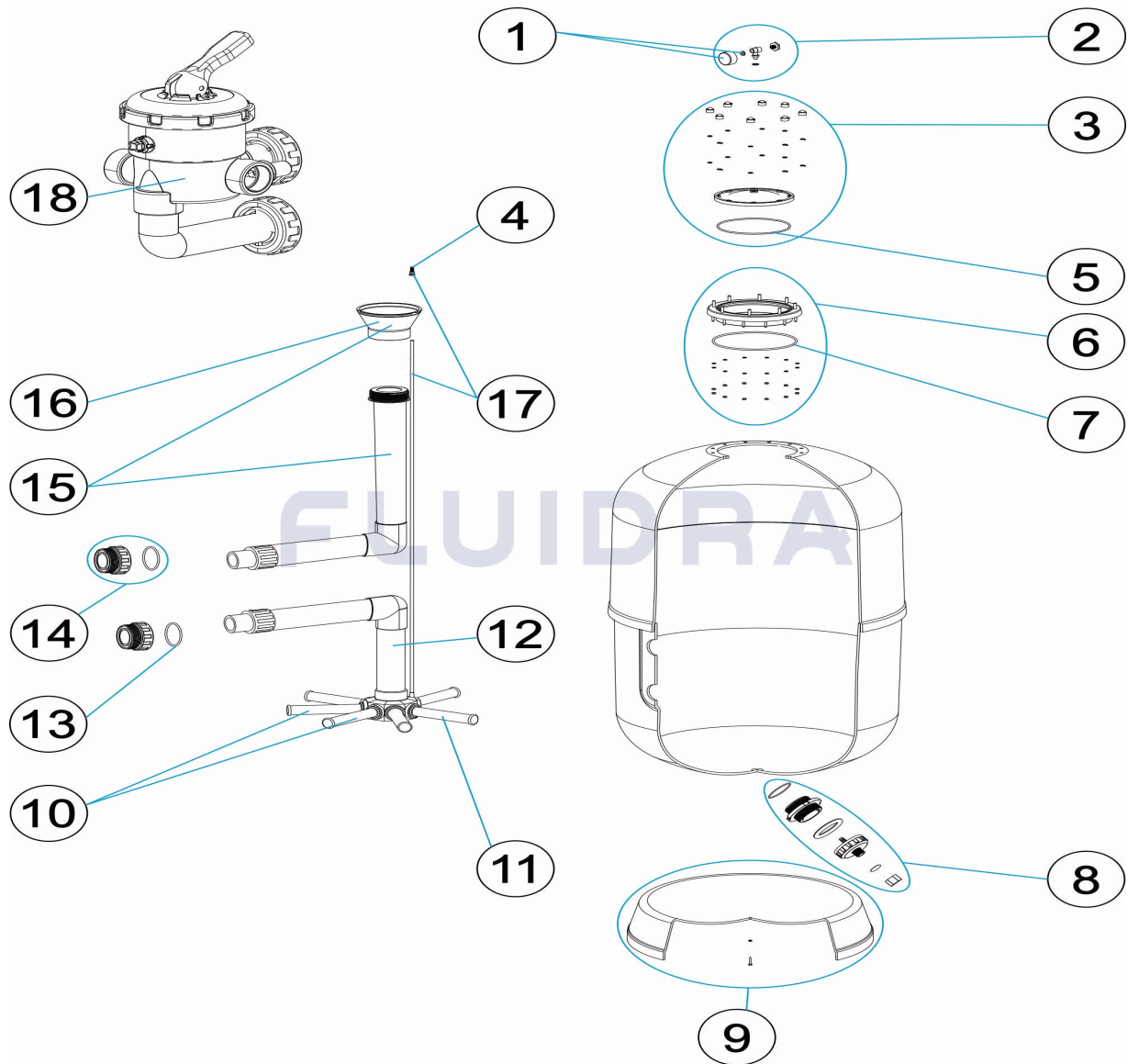
BESCHREIBUNG: FILTER LISBOA HIGH PERFORMANCE

HINWEISE

POS	CODE	HINWEISE
9	* SP-04-0260	FÜR: FV08-500, FS08-500
9	* SP-04-0138	FÜR: FV08-600, FS08-600
9	* SP-04-0139	FÜR: FV08-750, FS08-750
9	* SP-04-0251	FÜR: FV08-900, FV08-900-2, FS08-900, FS08-900-2
10	* SP-04-0151	FÜR: FV08-500, FS08-500
10	* SP-04-0152	FÜR: FV08-600, FS08-600
10	* SP-04-0201	FÜR: FV08-750, FS08-750
10	* SP-04-0154	FÜR: FV08-900, FV08-900-2, FS08-900, FS08-900-2
11	* SP-04-0148	FÜR: FV08-500 [4UT], FS08-500 [4UT]
11	* SP-04-0149	FÜR: FV08-600 [4UT], FS08-600 [4UT]
11	* SP-04-0147	FÜR: FV08-750 [6UT], FS08-750 [6UT]
11	* SP-04-0150	FÜR: FV08-900 [6UT], FV08-900-2 [6UT], FS08-900 [6UT], FS08-900-2 [6UT]
12	* SP-04-0440	FÜR: FV08-500, FS08-500
12	* SP-04-0441	FÜR: FV08-600, FS08-600
12	* SP-04-0442	FÜR: FV08-750, FS08-750
12	* SP-04-0443	FÜR: FV08-900, FS08-900
12	* SP-04-0444	FÜR: FV08-900-2, FS08-900-2
13	* SP-04-0253	FÜR: FV08-500, FV08-600, FV08-750, FV08-900, FS08-500, FS08-600, FS08-750, FS08-900
13	* SP-04-0291	FÜR: FV08-900-2, FS08-900-2
14	* SP-04-0142	FÜR: FV08-500, FV08-600, FS08-500, FS08-600
14	* SP-04-0143	FÜR: FV08-750, FV08-900, FS08-750, FS08-900
14	* SP-04-0144	FÜR: FV08-900-2, FS08-900-2
15	* SP-04-0445	FÜR: FV08-500, FS08-500
15	* SP-04-0446	FÜR: FV08-600, FS08-600
15	* SP-04-0447	FÜR: FV08-750, FS08-750
15	* SP-04-0448	FÜR: FV08-900, FS08-900
15	* SP-04-0449	FÜR: FV08-900-2, FS08-900-2
16	* SP-04-0180	FÜR: FV08-500, FV08-600, FS08-500, FS08-600
16	* SP-04-0181	FÜR: FV08-750, FV08-900, FS08-750, FS08-900
16	* SP-04-0182	FÜR: FV08-900-2, FS08-900-2
17	* SP-04-0184	FÜR: FV08-500, FV08-600, FV08-750, FS08-500, FS08-600, FS08-750
17	* SP-04-0185	FÜR: FV08-900, FV08-900-2, FS08-900, FS08-900-2
18	* PS-6103	FÜR: FV08-500, FV08-600
18	* PS-6104	FÜR: FV08-750, FV08-900
18	* PS-6200	FÜR: FV08-900-2

CODIGO **FV08-500, FV08-600, FV08-750, FV08-900, FV08-900-2, FS08-500, FS08-600, FS08-750, FS08-900, FS08-900-2**

DESCRIÇÃO: **FILTRO LISBOA HIGH PERFORMANCE**



PORTUGUES

POS	CODIGO	DESCRIÇÃO	JANTIDADE	POS	CODIGO	DESCRIÇÃO	JANTIDADE
1	SP-04-0072	MANOMETRO 1/8" 3 KG./C "		10	* SP-04-0154	CJTO. BRAÇO COLECTOR D. 750	
2	SP-04-0071	MANÓMETRO COMPLETO		11	* SP-04-0148	BRAÇO COLECTOR 1" 110 M "	
3	SP-04-0131	TAMPA FILTRO COMPLETO		11	* SP-04-0149	BRAÇO COLECTOR 1" 175 M "	
4	SP-04-0129	PURGA AREIA		11	* SP-04-0147	BRAÇO COLECTOR 1" 225 M "	
5	SP-04-0132	JUNTA TÓRICA 209X6		11	* SP-04-0150	BRAÇO COLECTOR 1" 265 M/M "	
6	SP-04-0133	ARO PESCOÇOÇO 20 PARAFUSOS		12	* SP-04-0440	CJTO. COLECTOR D. 500	
7	SP-04-0134	JUNTA TÓRICA 255X4		12	* SP-04-0441	CJTO. COLECTOR D. 600	
8	SP-04-0439	DESCARREGA AREIA - ÁGUA		12	* SP-04-0442	CJTO. COLECTOR D. 750	
9	* SP-04-0260	PÉ FILTRO D. 500		12	* SP-04-0443	CJTO. COLECTOR AST-L 900-2" T/ "	
9	* SP-04-0138	PÉ FILTRO D 600		12	* SP-04-0444	CJTO. COLECTOR AST-L 900-2 ½" T/ "	
9	* SP-04-0139	PÉ FILTRO D. 800		13	* SP-04-0253	JUNTA TÓRICA D 60X8	
9	* SP-04-0251	PÉ FILTRO D. 950		13	* SP-04-0291	JUNTA TÓRICA D 70X5	



ITEM

REV.: 0

9163

DATA: 08/06/2022

FOLHA: 2/3

CODIGO FV08-500, FV08-600, FV08-750, FV08-900, FV08-900-2, FS08-500,
FS08-600, FS08-750, FS08-900, FS08-900-2

DESCRIÇÃO: FILTRO LISBOA HIGH PERFORMANCE

10	* SP-04-0151	CJTO. BRAÇO COLECTOR D. 400	14	* SP-04-0142	RACORD 1 1/2" JUNTA TORIC "
10	* SP-04-0152	CJTO. BRAÇO COLECTOR	14	* SP-04-0143	ACOPLADOR SAÍDA 2" + JUNTA TORIC "
10	* SP-04-0201	CJTO. BRAÇO COLECTOR D.650	14	* SP-04-0144	RACORD DE SAIDA 2 1/2" + JUNTA TÓRIC "
15	* SP-04-0445	CJTO. DIFUSOR D. 500	16	* SP-04-0182	CONO DIFUSOR D. 75
15	* SP-04-0446	CJTO. DIFUSOR D. 600	17	* SP-04-0184	PURGA AR + TUBO L=670
15	* SP-04-0447	CJTO. DIFUSOR D. 750	17	* SP-04-0185	TUBO RÍGIDO L-845
15	* SP-04-0448	CJTO. DIFUSOR AST-L 900-2" T/ "	18	* PS-6103	VÁLVULA SELECTORA 1 ½"
15	* SP-04-0449	CJTO. DIFUSOR AST-L 900-2 ½" T/ "	18	* PS-6104	VÁLVULA SELECTORA COM LIGAÇÕES 2"
16	* SP-04-0180	CONO DIFUSOR D. 50	18	* PS-6200	VÁLVULA SELECTORA 2 ½"
16	* SP-04-0181	CONO DIFUSOR D. 63			

* VEJA A FICHA DE OBSERVAÇÕES

CODIGO **FV08-500, FV08-600, FV08-750, FV08-900, FV08-900-2, FS08-500, FS08-600, FS08-750, FS08-900, FS08-900-2**

DESCRIÇÃO: FILTRO LISBOA HIGH PERFORMANCE

OBSERVAÇÕES

POS	CODIGO	OBSERVAÇÕES
9	* SP-04-0260	PARA: FV08-500, FS08-500
9	* SP-04-0138	PARA: FV08-600, FS08-600
9	* SP-04-0139	PARA: FV08-750, FS08-750
9	* SP-04-0251	PARA: FV08-900, FV08-900-2, FS08-900, FS08-900-2
10	* SP-04-0151	PARA: FV08-500, FS08-500
10	* SP-04-0152	PARA: FV08-600, FS08-600
10	* SP-04-0201	PARA: FV08-750, FS08-750
10	* SP-04-0154	PARA: FV08-900, FV08-900-2, FS08-900, FS08-900-2
11	* SP-04-0148	PARA: FV08-500 [4UT], FS08-500 [4UT]
11	* SP-04-0149	PARA: FV08-600 [4UT], FS08-600 [4UT]
11	* SP-04-0147	PARA: FV08-750 [6UT], FS08-750 [6UT]
11	* SP-04-0150	PARA: FV08-900 [6UT], FV08-900-2 [6UT], FS08-900 [6UT], FS08-900-2 [6UT]
12	* SP-04-0440	PARA: FV08-500, FS08-500
12	* SP-04-0441	PARA: FV08-600, FS08-600
12	* SP-04-0442	PARA: FV08-750, FS08-750
12	* SP-04-0443	PARA: FV08-900, FS08-900
12	* SP-04-0444	PARA: FV08-900-2, FS08-900-2
13	* SP-04-0253	PARA: FV08-500, FV08-600, FV08-750, FV08-900, FS08-500, FS08-600, FS08-750, FS08-900
13	* SP-04-0291	PARA: FV08-900-2, FS08-900-2
14	* SP-04-0142	PARA: FV08-500, FV08-600, FS08-500, FS08-600
14	* SP-04-0143	PARA: FV08-750, FV08-900, FS08-750, FS08-900
14	* SP-04-0144	PARA: FV08-900-2, FS08-900-2
15	* SP-04-0445	PARA: FV08-500, FS08-500
15	* SP-04-0446	PARA: FV08-600, FS08-600
15	* SP-04-0447	PARA: FV08-750, FS08-750
15	* SP-04-0448	PARA: FV08-900, FS08-900
15	* SP-04-0449	PARA: FV08-900-2, FS08-900-2
16	* SP-04-0180	PARA: FV08-500, FV08-600, FS08-500, FS08-600
16	* SP-04-0181	PARA: FV08-750, FV08-900, FS08-750, FS08-900
16	* SP-04-0182	PARA: FV08-900-2, FS08-900-2
17	* SP-04-0184	PARA: FV08-500, FV08-600, FV08-750, FS08-500, FS08-600, FS08-750
17	* SP-04-0185	PARA: FV08-900, FV08-900-2, FS08-900, FS08-900-2
18	* PS-6103	PARA: FV08-500, FV08-600
18	* PS-6104	PARA: FV08-750, FV08-900
18	* PS-6200	PARA: FV08-900-2