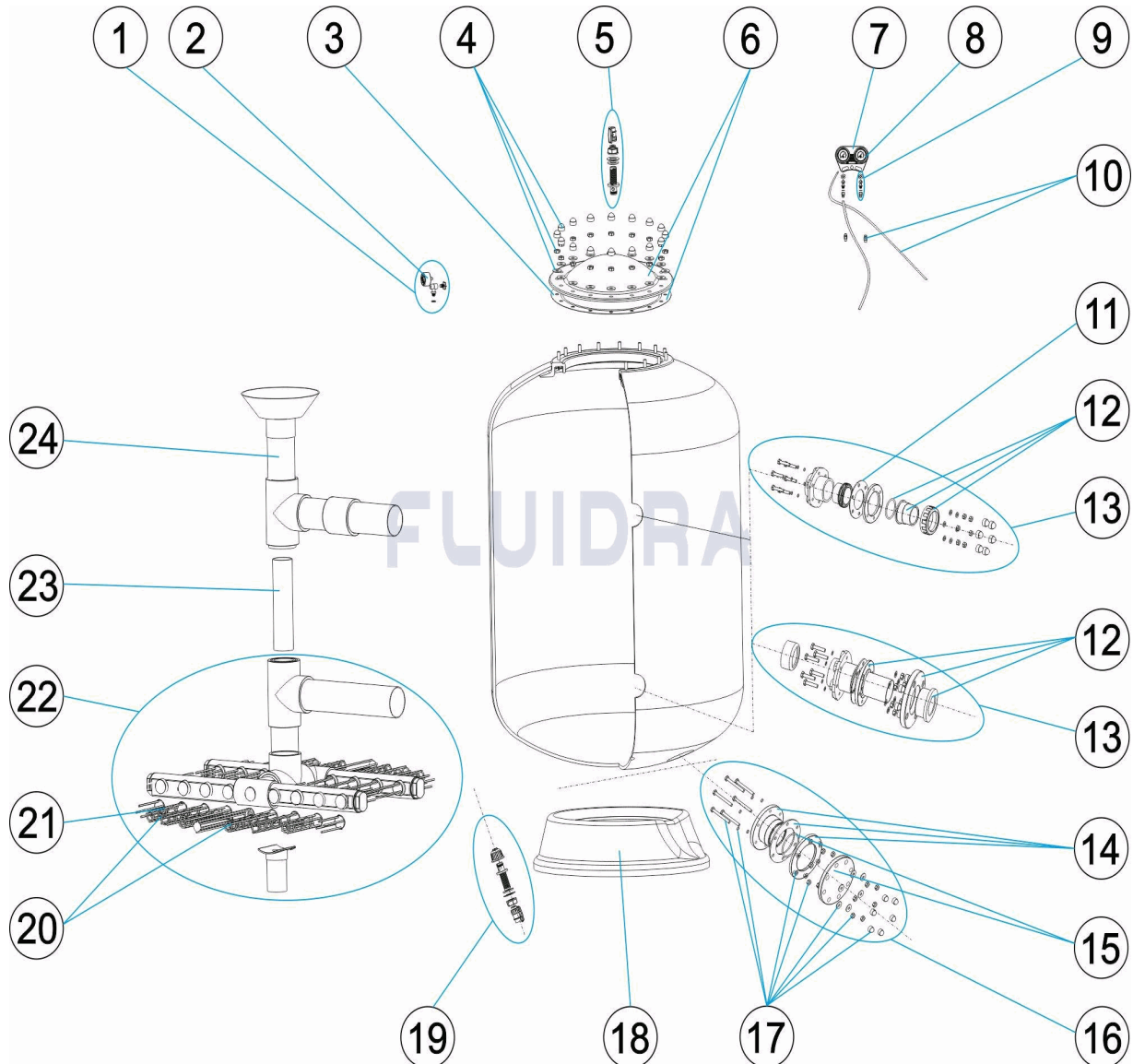


CODIGO

**FI-VI10632510, FI-VI10752510, FI-VI10902510, FI-VI12752510,
 FI-VI12902510, FI-VI14752510, FI-VI14902510, FI-VI14112510,
 FI-VI16902510, FI-VI16112510, FI-VI16122510, FI-VI18902510,
 FI-VI18112510, FI-VI18122510, FI-VI18142510, FI-VI20112510,
 FI-VI20122510, FI-VI20142510, FI-VI20162510**

DESCRIPCION: FILTRO VIENA 2,5 KG. D.1050-1200-1400-1600-1800-2000

ESPAÑOL

POS	CODIGO	DESCRIPCION	CANTIDAD	POS	CODIGO	DESCRIPCION	CANTIDAD
1	* SP-04-0071	MANOMETRO COMPLETO		12	* SP-04-0333	BRIDA RACORD 125 + MANGUITO	
2	* SP-04-0072	MANOMETRO 1/8" 3 KG/C "		12	* SP-04-0334	BRIDA RACORD 140 + MANGUITO	
3	SP-04-0305	JUNTA TORICA TAPA		12	* SP-04-0335	BRIDA 160 PVC + MANGUITO	
4	SP-04-0323	TORNILLERIA TAPA FILTRO		13	* SP-04-0336	CJTO. ENTRADA SALIDA D. 63-75-1050	
5	SP-04-0324	CJTO. PURGA		13	* SP-04-0337	CJTO. ENTRADA SALIDA D.75-1050-1200	
6	SP-04-0304	TAPA FILTRO + JUNTA		13	* SP-04-0338	CJTO. ENTRADA SALIDA D.75-1400	
7	SP-04-0325	CUERPO PANEL MANOMETROS		13	* SP-04-0339	CJTO. ENTRADA SALIDA D.90-1050-1200-14	
8	* SP-04-0326	MANOMETRO 3 KG. ANONIMO		13	* SP-04-0340	CJTO. ENTRADA SALIDA D.110-1400	
9	* SP-04-0327	PURGA PANEL MANOMETROS		13	* SP-04-0341	CJTO. ENTRADA SALIDA D.90-1600-1800	

*** NOTA OBSERVACIONES**



KIT

REV: 0

9154

FECHA: 02/06/2022

HOJA: 2/5

CODIGO

**FI-VI10632510, FI-VI10752510, FI-VI10902510, FI-VI12752510,
FI-VI12902510, FI-VI14752510, FI-VI14902510, FI-VI14112510,
FI-VI16902510, FI-VI16112510, FI-VI16122510, FI-VI18902510,
FI-VI18112510, FI-VI18122510, FI-VI18142510, FI-VI20112510,
FI-VI20122510, FI-VI20142510, FI-VI20162510**

DESCRIPCION: FILTRO VIENA 2,5 KG. D.1050-1200-1400-1600-1800-2000

10	* SP-04-0328	RACORD PANEL + TUBO	13	* SP-04-0342	CJTO. ENTRADA SALIDA D.110-1600-1800-2
11	* SP-04-0329	JUNTA SALIDA D. 63 - 75	13	* SP-04-0343	CJTO. ENTRADA SALIDA D.125-1600-1800
12	* SP-04-0278	TUERCA ENLACE 3 PIEZAS D63/75	13	* SP-04-0344	CJTO. ENTRADA SALIDA D.140
12	* SP-04-0330	BRIDA RACORD 75 + MANGUITO	13	* SP-04-0345	CJTO. ENTRADA SALIDA D.125-2000
12	* SP-04-0331	BRIDA RACORD 90 + MANGUITO	13	* SP-04-0346	CJTO. ENTRADA SALIDA D.140-2000
12	* SP-04-0332	BRIDA RACORD 110 + MANGUITO	13	* SP-04-0347	CJTO. ENTRADA SALIDA D.160-2000
14	SP-04-0348	PURGA ARENA 90	22	* SP-04-0386	CONJUNTO COLECTOR BP.1800-110 + SOP
15	SP-04-0349	BRIDA CIEGA 90 + JUNTA TORICA	22	* SP-04-0387	CONJUNTO COLECTOR BP.1800-125 + SOP
16	SP-04-0350	CJTO. PURGA ARENA	22	* SP-04-0388	CONJUNTO COLECTOR BP.1800-140 + SOP
17	SP-04-0351	CJTO. TORNILLERIA DESCARGA ARENA D.	22	* SP-04-0389	CONJUNTO COLECTOR BP.2000-110 + SOP
18	* SP-04-0352	PIE FILTRO D.1050	22	* SP-04-0390	CONJUNTO COLECTOR BP.2000-125 + SOP
18	* SP-04-0353	PIE FILTRO D.1200	22	* SP-04-0391	CONJUNTO COLECTOR BP.2000-140 + SOP
18	* SP-04-0354	PIE FILTRO D.1400	22	* SP-04-0392	CONJUNTO COLECTOR BP.2000-160 + SOP
18	* SP-04-0355	PIE FILTRO D.1600	23	* SP-04-0393	SOPORTE DIFUSOR FILTRO 1.400 - 110
18	* SP-04-0356	PIE FILTRO D.1800	23	* SP-04-0394	SOPORTE DIFUSOR FILTRO 1600-90
18	* SP-04-0357	PIE FILTRO D.2000	23	* SP-04-0395	SOPORTE DIFUSOR FILTRO 1600-110
19	SP-04-0358	PURGA AGUA "	23	* SP-04-0396	SOPORTE DIFUSOR FILTRO 1600-125
20	* SP-04-0359	CJTO. BRAZOS COLECTOR D.1050	23	* SP-04-0397	SOPORTE DIFUSOR FILTRO 1800-90
20	* SP-04-0360	CJTO. BRAZOS COLECTOR D.1200	23	* SP-04-0398	SOPORTE DIFUSOR FILTRO 1800-110
20	* SP-04-0361	CJTO. BRAZOS COLECTOR D.1400	23	* SP-04-0399	SOPORTE DIFUSOR FILTRO 1800-125
20	* SP-04-0362	CJTO. BRAZOS COLECTOR D.1600	23	* SP-04-0400	SOPORTE DIFUSOR FILTRO 1800-140
20	* SP-04-0363	CJTO. BRAZOS COLECTOR D.1800	23	* SP-04-0401	SOPORTE DIFUSOR FILTRO 2000-110
20	* SP-04-0364	CJTO. BRAZOS COLECTOR D.2000	23	* SP-04-0402	SOPORTE DIFUSOR FILTRO 2000-125
21	* SP-04-0365	BRAZO COLECTOR 1½" 90 MM "	23	* SP-04-0403	SOPORTE DIFUSOR FILTRO 2000-140
21	* SP-04-0366	BRAZO COLECTOR 1½" 160 MM "	23	* SP-04-0404	SOPORTE DIFUSOR FILTRO 2000-160
21	* SP-04-0367	BRAZO COLECTOR 1½" 225 MM "	24	* SP-04-0405	CONJUNTO DIFUSOR BP.1050-63
21	* SP-04-0368	BRAZO COLECTOR 1½" 260 MM "	24	* SP-04-0406	CONJUNTO DIFUSOR BP.1050-75
21	* SP-04-0369	BRAZO COLECTOR 1½" 325 MM "	24	* SP-04-0407	CONJUNTO DIFUSOR BP.1050-90
21	* SP-04-0370	BRAZO COLECTOR 1½" 360 MM "	24	* SP-04-0408	CONJUNTO DIFUSOR BP.1200-75
21	* SP-04-0371	BRAZO COLECTOR 1½" 425 MM "	24	* SP-04-0409	CONJUNTO DIFUSOR BP.1200-90
21	* SP-04-0372	BRAZO COLECTOR 1½" 460 MM "	24	* SP-04-0410	CONJUNTO DIFUSOR BP.1400-75
21	* SP-04-0373	BRAZO COLECTOR 1½" 525 MM "	24	* SP-04-0411	CONJUNTO DIFUSOR BP.1400-90
22	* SP-04-0374	CONJUNTO COLECTOR BP.1050-63	24	* SP-04-0412	CONJUNTO DIFUSOR BP.1400-110
22	* SP-04-0375	CONJUNTO COLECTOR BP.1050-75	24	* SP-04-0413	CONJUNTO DIFUSOR BP.1600-90
22	* SP-04-0376	CONJUNTO COLECTOR BP.1050-90	24	* SP-04-0414	CONJUNTO DIFUSOR BP.1600-110
22	* SP-04-0377	CONJUNTO COLECTOR BP.1200-75	24	* SP-04-0415	CONJUNTO DIFUSOR BP.1600-125
22	* SP-04-0378	CONJUNTO COLECTOR BP.1200-90	24	* SP-04-0416	CONJUNTO DIFUSOR BP.1800-90
22	* SP-04-0379	CONJUNTO COLECTOR BP.1400-75	24	* SP-04-0417	CONJUNTO DIFUSOR BP.1800-110
22	* SP-04-0380	CONJUNTO COLECTOR BP.1400-90	24	* SP-04-0418	CONJUNTO DIFUSOR BP.1800-125
22	* SP-04-0381	CONJUNTO COLECTOR BP.1400-110	24	* SP-04-0419	CONJUNTO DIFUSOR BP.1800-140
22	* SP-04-0382	CONJUNTO COLECTOR BP.1600-90 + SOP	24	* SP-04-0420	CONJUNTO DIFUSOR BP.2000-110
22	* SP-04-0383	CONJUNTO COLECTOR BP.1600-110 + SOF	24	* SP-04-0421	CONJUNTO DIFUSOR BP.2000-125
22	* SP-04-0384	CONJUNTO COLECTOR BP.1600-125 + SOI	24	* SP-04-0422	CONJUNTO DIFUSOR BP.2000-140
22	* SP-04-0385	CONJUNTO COLECTOR BP.1800-90 + SOP	24	* SP-04-0423	CONJUNTO DIFUSOR BP.2000-160

* NOTA OBSERVACIONES

CODIGO **FI-VI10632510, FI-VI10752510, FI-VI10902510, FI-VI12752510, FI-VI12902510, FI-VI14752510, FI-VI14902510, FI-VI14112510, FI-VI16902510, FI-VI16112510, FI-VI16122510, FI-VI18902510, FI-VI18112510, FI-VI18122510, FI-VI18142510, FI-VI20112510, FI-VI20122510, FI-VI20142510, FI-VI20162510**

DESCRIPCION: FILTRO VIENA 2,5 KG. D.1050-1200-1400-1600-1800-2000

OBSERVACIONES

POS	CODIGO	OBSERVACIONES
1	* SP-04-0071	PARA: FI-VI10632510
2	* SP-04-0072	PARA: FI-VI10632510
8	* SP-04-0326	PARA: FI-VI10752510, FI-VI10902510, FI-VI12752510, FI-VI12902510, FI-VI14752510, FI-VI14902510, FI-VI14112510, FI-VI16902510, FI-VI16112510, FI-VI16122510, FI-VI18902510, FI-VI18112510, FI-VI18122510, FI-VI18142510, FI-VI20112510, FI-VI20122510, FI-VI20142510, FI-VI20162510
9	* SP-04-0327	PARA: FI-VI10752510, FI-VI10902510, FI-VI12752510, FI-VI12902510, FI-VI14752510, FI-VI14902510, FI-VI14112510, FI-VI16902510, FI-VI16112510, FI-VI16122510, FI-VI18902510, FI-VI18112510, FI-VI18122510, FI-VI18142510, FI-VI20112510, FI-VI20122510, FI-VI20142510, FI-VI20162510
10	* SP-04-0328	PARA: FI-VI10752510, FI-VI10902510, FI-VI12752510, FI-VI12902510, FI-VI14752510, FI-VI14902510, FI-VI14112510, FI-VI16902510, FI-VI16112510, FI-VI16122510, FI-VI18902510, FI-VI18112510, FI-VI18122510, FI-VI18142510, FI-VI20112510, FI-VI20122510, FI-VI20142510, FI-VI20162510
11	* SP-04-0329	PARA: FI-VI10632510
12	* SP-04-0278	PARA: FI-VI10632510
12	* SP-04-0330	PARA: FI-VI10752510, FI-VI12752510, FI-VI14752510
12	* SP-04-0331	PARA: FI-VI10902510, FI-VI12902510, FI-VI14902510, FI-VI16902510, FI-VI18902510
12	* SP-04-0332	PARA: FI-VI14112510, FI-VI16112510, FI-VI18112510, FI-VI20112510
12	* SP-04-0333	PARA: FI-VI16122510, FI-VI18122510, FI-VI20122510
12	* SP-04-0334	PARA: FI-VI18142510, FI-VI20142510
12	* SP-04-0335	PARA: FI-VI20162510
13	* SP-04-0336	PARA: FI-VI10632510
13	* SP-04-0337	PARA: FI-VI10752510, FI-VI12752510
13	* SP-04-0338	PARA: FI-VI14752510
13	* SP-04-0339	PARA: FI-VI10902510, FI-VI12902510, FI-VI14902510
13	* SP-04-0340	PARA: FI-VI14112510
13	* SP-04-0341	PARA: FI-VI16902510, FI-VI18902510
13	* SP-04-0342	PARA: FI-VI16112510, FI-VI18112510, FI-VI20112510
13	* SP-04-0343	PARA: FI-VI16122510, FI-VI18122510
13	* SP-04-0344	PARA: FI-VI18142510
13	* SP-04-0345	PARA: FI-VI20122510
13	* SP-04-0346	PARA: FI-VI20142510
13	* SP-04-0347	PARA: FI-VI20162510
18	* SP-04-0352	PARA: FI-VI10632510, FI-VI10752510, FI-VI10902510
18	* SP-04-0353	PARA: FI-VI12752510, FI-VI12902510
18	* SP-04-0354	PARA: FI-VI14752510, FI-VI14902510, FI-VI14112510
18	* SP-04-0355	PARA: FI-VI16902510, FI-VI16112510, FI-VI16122510
18	* SP-04-0356	PARA: FI-VI18902510, FI-VI18112510, FI-VI18122510, FI-VI18142510
18	* SP-04-0357	PARA: FI-VI20112510, FI-VI20122510, FI-VI20142510, FI-VI20162510
20	* SP-04-0359	PARA: FI-VI10632510, FI-VI10752510, FI-VI10902510
20	* SP-04-0360	PARA: FI-VI12752510, FI-VI12902510
20	* SP-04-0361	PARA: FI-VI14752510, FI-VI14902510, FI-VI14112510
20	* SP-04-0362	PARA: FI-VI16902510, FI-VI16112510, FI-VI16122510
20	* SP-04-0363	PARA: FI-VI18902510, FI-VI18112510, FI-VI18122510, FI-VI18142510
20	* SP-04-0364	PARA: FI-VI20112510, FI-VI20122510, FI-VI20142510, FI-VI20162510

CODIGO **FI-VI10632510, FI-VI10752510, FI-VI10902510, FI-VI12752510, FI-VI12902510, FI-VI14752510, FI-VI14902510, FI-VI14112510, FI-VI16902510, FI-VI16112510, FI-VI16122510, FI-VI18902510, FI-VI18112510, FI-VI18122510, FI-VI18142510, FI-VI20112510, FI-VI20122510, FI-VI20142510, FI-VI20162510**

DESCRIPCION: FILTRO VIENA 2,5 KG. D.1050-1200-1400-1600-1800-2000

21	* SP-04-0365	PARA: FI-VI16902510 [2UNIDADES], FI-VI16112510 [2UNIDADES], FI-VI16122510 [2UNIDADES], FI-VI18902510 [2UNIDADES], FI-VI18112510 [2UNIDADES], FI-VI18122510 [2UNIDADES], FI-VI18142510 [2UNIDADES], FI-VI20112510 [2UNIDADES], FI-VI20122510 [2UNIDADES], FI-VI20142510 [2UNIDADES], FI-VI20162510 [2UNIDADES]
21	* SP-04-0366	PARA: FI-VI18902510 [2UNIDADES], FI-VI18112510 [2UNIDADES], FI-VI18122510 [2UNIDADES], FI-VI18142510 [2UNIDADES]
21	* SP-04-0367	PARA: FI-VI14752510 [2UNIDADES], FI-VI14902510 [2UNIDADES], FI-VI14112510 [2UNIDADES], FI-VI16902510 [2UNIDADES], FI-VI16112510 [2UNIDADES], FI-VI16122510 [2UNIDADES]
21	* SP-04-0368	PARA: FI-VI14752510 [2UNIDADES], FI-VI14902510 [2UNIDADES], FI-VI14112510 [2UNIDADES], FI-VI16902510 [2UNIDADES], FI-VI16112510 [2UNIDADES], FI-VI16122510
21	* SP-04-0369	PARA: FI-VI10632510 [2UNIDADES], FI-VI10752510 [2UNIDADES], FI-VI10902510 [2UNIDADES], FI-VI14752510 [2UNIDADES], FI-VI14902510 [2UNIDADES], FI-VI14112510 [2UNIDADES], FI-VI16902510 [3UNIDADES], FI-VI16112510 [3UNIDADES], FI-VI16122510 [3UNIDADES]
21	* SP-04-0370	PARA: FI-VI10632510 [3UNIDADES], FI-VI10752510 [3UNIDADES], FI-VI10902510 [3UNIDADES], FI-VI12752510 [2UNIDADES], FI-VI12902510 [2UNIDADES], FI-VI18902510 [2UNIDADES], FI-VI18112510 [2UNIDADES], FI-VI18122510 [2UNIDADES], FI-VI18142510 [2UNIDADES], FI-VI20112510 [2UNIDADES], FI-VI20122510 [2UNIDADES], FI-VI20142510 [2UNIDADES], FI-VI20162510 [2UNIDADES]
21	* SP-04-0371	PARA: FI-VI12752510 [3UNIDADES], FI-VI12902510 [3UNIDADES], FI-VI18902510 [2UNIDADES], FI-VI18112510 [2UNIDADES], FI-VI18122510 [2UNIDADES], FI-VI18142510 [2UNIDADES], FI-VI20112510 [2UNIDADES], FI-VI20122510 [2UNIDADES], FI-VI20142510 [2UNIDADES], FI-VI20162510 [2UNIDADES]
21	* SP-04-0372	PARA: FI-VI14752510 [2UNIDADES], FI-VI14902510 [2UNIDADES], FI-VI14112510 [2UNIDADES], FI-VI18902510 [3UNIDADES], FI-VI18112510 [3UNIDADES], FI-VI18122510 [3UNIDADES], FI-VI18142510 [3UNIDADES], FI-VI20112510 [3UNIDADES], FI-VI20122510 [3UNIDADES], FI-VI20142510 [3UNIDADES], FI-VI20162510 [3UNIDADES]
21	* SP-04-0373	PARA: FI-VI14752510 [3UNIDADES], FI-VI14902510 [3UNIDADES], FI-VI14112510 [3UNIDADES]
22	* SP-04-0374	PARA: FI-VI10632510
22	* SP-04-0375	PARA: FI-VI10752510
22	* SP-04-0376	PARA: FI-VI10902510
22	* SP-04-0377	PARA: FI-VI12752510
22	* SP-04-0378	PARA: FI-VI12902510
22	* SP-04-0379	PARA: FI-VI14752510
22	* SP-04-0380	PARA: FI-VI14902510
22	* SP-04-0381	PARA: FI-VI14112510
22	* SP-04-0382	PARA: FI-VI16902510
22	* SP-04-0383	PARA: FI-VI16112510
22	* SP-04-0384	PARA: FI-VI16112510
22	* SP-04-0385	PARA: FI-VI18902510
22	* SP-04-0386	PARA: FI-VI18112510
22	* SP-04-0387	PARA: FI-VI18122510
22	* SP-04-0388	PARA: FI-VI18142510
22	* SP-04-0389	PARA: FI-VI20112510
22	* SP-04-0390	PARA: FI-VI20122510
22	* SP-04-0391	PARA: FI-VI20142510
22	* SP-04-0392	PARA: FI-VI20162510
23	* SP-04-0393	PARA: FI-VI14112510
23	* SP-04-0394	PARA: FI-VI16902510
23	* SP-04-0395	PARA: FI-VI16112510
23	* SP-04-0396	PARA: FI-VI16122510
23	* SP-04-0397	PARA: FI-VI18902510
23	* SP-04-0398	PARA: FI-VI18112510



KIT

REV: 0

9154

FECHA: 02/06/2022

HOJA: 5/5

CODIGO

**FI-VI10632510, FI-VI10752510, FI-VI10902510, FI-VI12752510,
FI-VI12902510, FI-VI14752510, FI-VI14902510, FI-VI14112510,
FI-VI16902510, FI-VI16112510, FI-VI16122510, FI-VI18902510,
FI-VI18112510, FI-VI18122510, FI-VI18142510, FI-VI20112510,
FI-VI20122510, FI-VI20142510, FI-VI20162510**

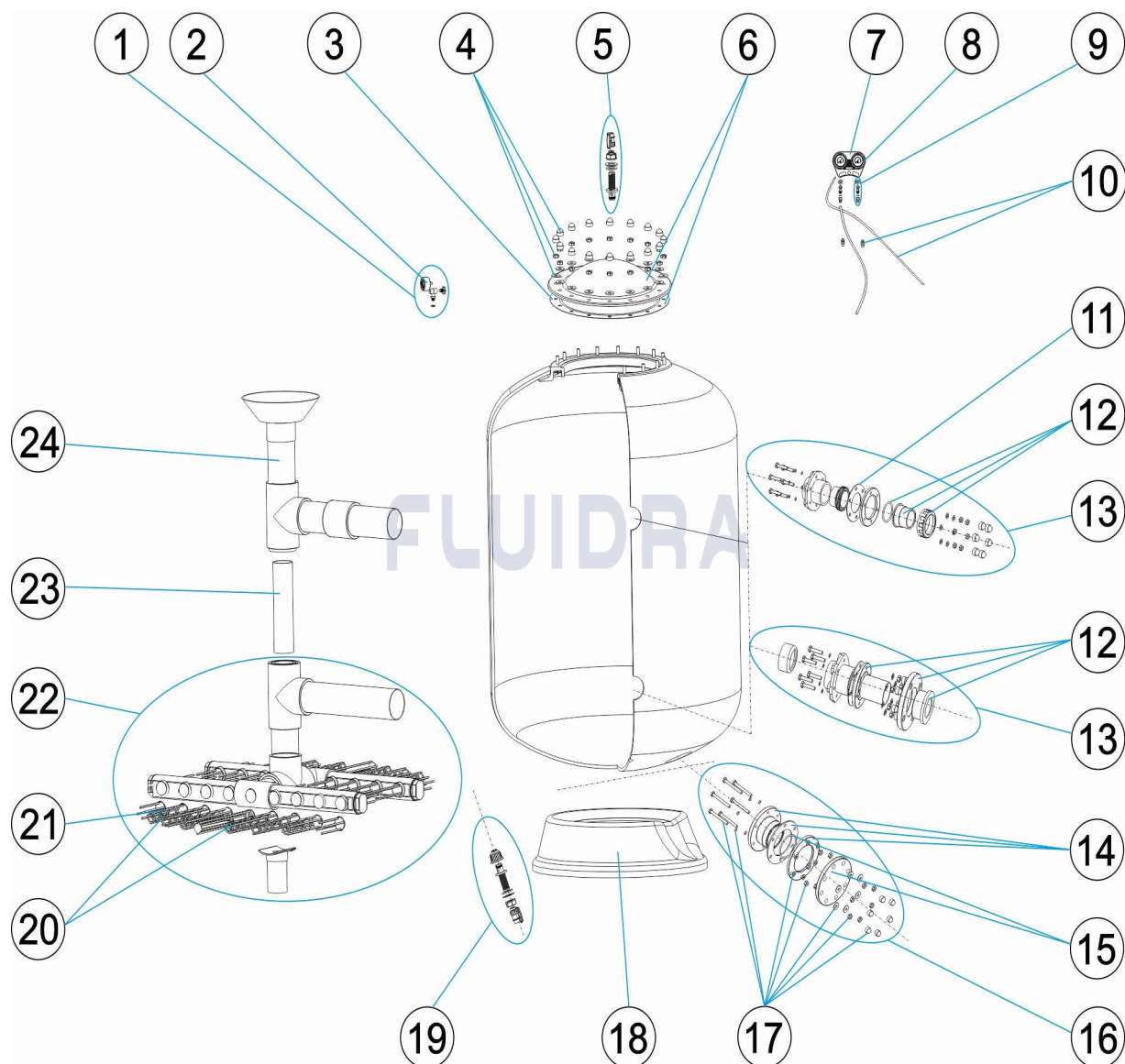
DESCRIPCION: FILTRO VIENA 2,5 KG. D.1050-1200-1400-1600-1800-2000

23	* SP-04-0399	PARA: FI-VI18122510
23	* SP-04-0400	PARA: FI-VI18142510
23	* SP-04-0401	PARA: FI-VI20112510
23	* SP-04-0402	PARA: FI-VI20122510
23	* SP-04-0403	PARA: FI-VI20142510
23	* SP-04-0404	PARA: FI-VI20162510
24	* SP-04-0405	PARA: FI-VI10632510
24	* SP-04-0406	PARA: FI-VI10752510
24	* SP-04-0407	PARA: FI-VI10902510
24	* SP-04-0408	PARA: FI-VI12752510
24	* SP-04-0409	PARA: FI-VI12902510
24	* SP-04-0410	PARA: FI-VI14752510
24	* SP-04-0411	PARA: FI-VI14902510
24	* SP-04-0412	PARA: FI-VI14112510
24	* SP-04-0413	PARA: FI-VI16902510
24	* SP-04-0414	PARA: FI-VI16112510
24	* SP-04-0415	PARA: FI-VI16122510
24	* SP-04-0416	PARA: FI-VI18902510
24	* SP-04-0417	PARA: FI-VI18112510
24	* SP-04-0418	PARA: FI-VI18122510
24	* SP-04-0419	PARA: FI-VI18142510
24	* SP-04-0420	PARA: FI-VI20112510
24	* SP-04-0421	PARA: FI-VI20122510
24	* SP-04-0422	PARA: FI-VI20142510
24	* SP-04-0423	PARA: FI-VI20162510

CODE

FI-VI10632510, FI-VI10752510, FI-VI10902510, FI-VI12752510,
 FI-VI12902510, FI-VI14752510, FI-VI14902510, FI-VI14112510,
 FI-VI16902510, FI-VI16112510, FI-VI16122510, FI-VI18902510,
 FI-VI18112510, FI-VI18122510, FI-VI18142510, FI-VI20112510,
 FI-VI20122510, FI-VI20142510, FI-VI20162510

DESCRIPTION: FILTRE VIENA 2,5 KG. D.1050-1200-1400-1600-1800-2000


FRANCAIS

POS	CODE	DESCRIPTION	QUANTITE	POS	CODE	DESCRIPTION	QUANTITE
1	* SP-04-0071	MANOMETRE COMPLET		12	* SP-04-0333	BRIDE RACCORD 125 + RACCORD	
2	* SP-04-0072	MANOMETRE 1/8" 3 KG./C "		12	* SP-04-0334	BRIDE RACCORD 140 + RACCORD	
3	SP-04-0305	JOINT TORIQUE COUVERCLE		12	* SP-04-0335	BRIDE 160 PVC + RACCORD	
4	SP-04-0323	VISSERIE COUVERCLE DE FILTRE		13	* SP-04-0336	ENTRÉE SORTIE D.63-1050	
5	SP-04-0324	ENSEMBLE PURGE		13	* SP-04-0337	ENTRÉE SORTIE D.75-1050-1200	
6	SP-04-0304	COUVERCLE FILTRE + JOINT		13	* SP-04-0338	ENTRÉE SORTIE D.75-1400	
7	SP-04-0325	CORPS FACADE MANOMETRES		13	* SP-04-0339	ENTRÉE SORTIE D.90-1050-1200-1400	
8	* SP-04-0326	MANOMETRE 3 BARS		13	* SP-04-0340	ENTRÉE SORTIE D.110-1400	
9	* SP-04-0327	PURGE D'AIR		13	* SP-04-0341	ENTRÉE SORTIE D.90-1600-1800	

* VOIR FICHE D'OBSERVATIONS

CODE

**FI-VI10632510, FI-VI10752510, FI-VI10902510, FI-VI12752510,
 FI-VI12902510, FI-VI14752510, FI-VI14902510, FI-VI14112510,
 FI-VI16902510, FI-VI16112510, FI-VI16122510, FI-VI18902510,
 FI-VI18112510, FI-VI18122510, FI-VI18142510, FI-VI20112510,
 FI-VI20122510, FI-VI20142510, FI-VI20162510**

DESCRIPTION: FILTRE VIENA 2,5 KG. D.1050-1200-1400-1600-1800-2000

10	* SP-04-0328	RACCORD FACADE + TUBE	13	* SP-04-0342	ENTRÉE SORTIE D.110-1600-1800-2000
11	* SP-04-0329	JOINT SORTIE D. 63 - 75	13	* SP-04-0343	ENTRÉE SORTIE D.125-1600-1800
12	* SP-04-0278	ECROU RACCORD 3 PIECES D63/75	13	* SP-04-0344	ENTRÉE SORTIE D.140
12	* SP-04-0330	BRIDE RACCORD 75 + MANCHON	13	* SP-04-0345	ENTRÉE SORTIE D.125-2000
12	* SP-04-0331	BRIDE RACCORD 90 + RACCORD	13	* SP-04-0346	ENTRÉE SORTIE D.140-2000
12	* SP-04-0332	BRIDE RACCORD 110 + RACCORD	13	* SP-04-0347	ENTRÉE SORTIE D.160-2000
14	SP-04-0348	PURGE SABLE 90	22	* SP-04-0386	ENSEMBLE COLLECTEUR BP.1800-110 + SL
15	SP-04-0349	PLAQUE PLEINE 90 + JOINT TORIQUE	22	* SP-04-0387	ENSEMBLE COLLECTEUR BP.1800-125 + SL
16	SP-04-0350	ENSEMBLE PURGE SABLE	22	* SP-04-0388	ENSEMBLE COLLECTEUR BP.1800-140 + SL
17	SP-04-0351	ENSEMBLE VOISSERIE DÉCHARGE SABLE	22	* SP-04-0389	ENSEMBLE COLLECTEUR BP.2000-110 + SL
18	* SP-04-0352	SOCLE FILTRE D.1050	22	* SP-04-0390	ENSEMBLE COLLECTEUR BP.2000-125 + SL
18	* SP-04-0353	SOCLE FILTRE D.1200	22	* SP-04-0391	ENSEMBLE COLLECTEUR BP.2000-140 + SL
18	* SP-04-0354	SOCLE FILTRE D.1400	22	* SP-04-0392	ENSEMBLE COLLECTEUR BP.2000-160 + SL
18	* SP-04-0355	SOCLE FILTRE D.1600	23	* SP-04-0393	SUPPORT DIFFUSEUR D.110 - 1400
18	* SP-04-0356	SOCLE FILTRE D.1800	23	* SP-04-0394	SUPPORT DIFFUSEUR 1600-90
18	* SP-04-0357	SOCLE FILTRE D.2000	23	* SP-04-0395	SUPPORT DIFFUSEUR 1600-110
19	SP-04-0358	PURGE D'EAU "	23	* SP-04-0396	SUPPORT DIFFUSEUR 1600-125
20	* SP-04-0359	ENSEMBLE BRAS DE REPARTITEUR D. 10€	23	* SP-04-0397	SUPPORT DIFFUSEUR 1800-90
20	* SP-04-0360	ENSEMBLE BRAS DE REPARTITEUR D. 12€	23	* SP-04-0398	SUPPORT DIFFUSEUR 1800-110
20	* SP-04-0361	ENSEMBLE BRAS DE REPARTITEUR D. 14€	23	* SP-04-0399	SUPPORT DIFFUSEUR 1800-125
20	* SP-04-0362	ENSEMBLE BRAS DE REPARTITEUR D. 16€	23	* SP-04-0400	SUPPORT DIFFUSEUR 1800-140
20	* SP-04-0363	ENSEMBLE BRAS DE REPARTITEUR D. 18€	23	* SP-04-0401	SUPPORT DIFFUSEUR 2000-110
20	* SP-04-0364	ENSEMBLE BRAS DE REPARTITEUR D. 20€	23	* SP-04-0402	SUPPORT DIFFUSEUR 2000-125
21	* SP-04-0365	BRAS DE REPARTITEUR 11/2" 90 M/M "	23	* SP-04-0403	SUPPORT DIFFUSEUR 2000-140
21	* SP-04-0366	BRAS DE REPARTITEUR 11/2" 160 M/M "	23	* SP-04-0404	SUPPORT DIFFUSEUR 2000-160
21	* SP-04-0367	BRAS DE REPARTITEUR 11/2" 225 M/M "	24	* SP-04-0405	ENSEMBLE DIFFUSEUR BP.1050-63
21	* SP-04-0368	BRAS DE REPARTITEUR 11/2" 260 M/M "	24	* SP-04-0406	ENSEMBLE DIFFUSEUR BP.1050-75
21	* SP-04-0369	BRAS DE REPARTITEUR 11/2" 325 M/M "	24	* SP-04-0407	ENSEMBLE DIFFUSEUR BP.1050-90
21	* SP-04-0370	BRAS DE REPARTITEUR 11/2" 360 M/M "	24	* SP-04-0408	ENSEMBLE DIFFUSEUR BP.1200-75
21	* SP-04-0371	BRAS DE REPARTITEUR 11/2" 425 M/M "	24	* SP-04-0409	ENSEMBLE DIFFUSEUR BP.1200-90
21	* SP-04-0372	BRAS DE REPARTITEUR 11/2" 460 M/M "	24	* SP-04-0410	ENSEMBLE DIFFUSEUR BP.1400-75
21	* SP-04-0373	BRAS DE REPARTITEUR 11/2" 525 M/M "	24	* SP-04-0411	ENSEMBLE DIFFUSEUR BP.1400-90
22	* SP-04-0374	ENSEMBLE COLLECTEUR BP.1050-63	24	* SP-04-0412	ENSEMBLE DIFFUSEUR BP.1400-110
22	* SP-04-0375	ENSEMBLE COLLECTEUR BP.1050-75	24	* SP-04-0413	ENSEMBLE DIFFUSEUR BP.1600-90
22	* SP-04-0376	ENSEMBLE COLLECTEUR BP.1050-90	24	* SP-04-0414	ENSEMBLE DIFFUSEUR BP.1600-110
22	* SP-04-0377	ENSEMBLE COLLECTEUR BP.1200-75	24	* SP-04-0415	ENSEMBLE DIFFUSEUR BP.1600-125
22	* SP-04-0378	ENSEMBLE COLLECTEUR BP.1200-90	24	* SP-04-0416	ENSEMBLE DIFFUSEUR BP.1800-90
22	* SP-04-0379	ENSEMBLE COLLECTEUR BP.1400-75	24	* SP-04-0417	ENSEMBLE DIFFUSEUR BP.1800-110
22	* SP-04-0380	ENSEMBLE COLLECTEUR BP.1400-90	24	* SP-04-0418	ENSEMBLE DIFFUSEUR BP.1800-125
22	* SP-04-0381	ENSEMBLE COLLECTEUR BP.1400-110	24	* SP-04-0419	ENSEMBLE DIFFUSEUR BP.1800-140
22	* SP-04-0382	ENSEMBLE COLLECTEUR BP.1600-90 + SL	24	* SP-04-0420	ENSEMBLE DIFFUSEUR BP.2000-110
22	* SP-04-0383	ENSEMBLE COLLECTEUR BP.1600-110 + S	24	* SP-04-0421	ENSEMBLE DIFFUSEUR BP.2000-125
22	* SP-04-0384	ENSEMBLE COLLECTEUR BP.1600-125 + S	24	* SP-04-0422	ENSEMBLE DIFFUSEUR BP.2000-140
22	* SP-04-0385	ENSEMBLE COLLECTEUR BP.1800-90 + SL	24	* SP-04-0423	ENSEMBLE DIFFUSEUR BP.2000-160

CODE **FI-VI10632510, FI-VI10752510, FI-VI10902510, FI-VI12752510,**
FI-VI12902510, FI-VI14752510, FI-VI14902510, FI-VI14112510,
FI-VI16902510, FI-VI16112510, FI-VI16122510, FI-VI18902510,
FI-VI18112510, FI-VI18122510, FI-VI18142510, FI-VI20112510,
FI-VI20122510, FI-VI20142510, FI-VI20162510

DESCRIPTION: FILTRE VIENA 2,5 KG. D.1050-1200-1400-1600-1800-2000

OBSERVATIONS

POS	CODE	OBSERVATIONS
1	* SP-04-0071	POUR: FI-VI10632510
2	* SP-04-0072	POUR: FI-VI10632510
8	* SP-04-0326	POUR: FI-VI10752510, FI-VI10902510, FI-VI12752510, FI-VI12902510, FI-VI14752510, FI-VI14902510, FI-VI14112510, FI-VI16902510, FI-VI16112510, FI-VI16122510, FI-VI18902510, FI-VI18112510, FI-VI18122510, FI-VI18142510, FI-VI20112510, FI-VI20122510, FI-VI20142510, FI-VI20162510
9	* SP-04-0327	POUR: FI-VI10752510, FI-VI10902510, FI-VI12752510, FI-VI12902510, FI-VI14752510, FI-VI14902510, FI-VI14112510, FI-VI16902510, FI-VI16112510, FI-VI16122510, FI-VI18902510, FI-VI18112510, FI-VI18122510, FI-VI18142510, FI-VI20112510, FI-VI20122510, FI-VI20142510, FI-VI20162510
10	* SP-04-0328	POUR: FI-VI10752510, FI-VI10902510, FI-VI12752510, FI-VI12902510, FI-VI14752510, FI-VI14902510, FI-VI14112510, FI-VI16902510, FI-VI16112510, FI-VI16122510, FI-VI18902510, FI-VI18112510, FI-VI18122510, FI-VI18142510, FI-VI20112510, FI-VI20122510, FI-VI20142510, FI-VI20162510
11	* SP-04-0329	POUR: FI-VI10632510
12	* SP-04-0278	POUR: FI-VI10632510
12	* SP-04-0330	POUR: FI-VI10752510, FI-VI12752510, FI-VI14752510
12	* SP-04-0331	POUR: FI-VI10902510, FI-VI12902510, FI-VI14902510, FI-VI16902510, FI-VI18902510
12	* SP-04-0332	POUR: FI-VI14112510, FI-VI16112510, FI-VI18112510, FI-VI20112510
12	* SP-04-0333	POUR: FI-VI16122510, FI-VI18122510, FI-VI20122510
12	* SP-04-0334	POUR: FI-VI18142510, FI-VI20142510
12	* SP-04-0335	POUR: FI-VI20162510
13	* SP-04-0336	POUR: FI-VI10632510
13	* SP-04-0337	POUR: FI-VI10752510, FI-VI12752510
13	* SP-04-0338	POUR: FI-VI14752510
13	* SP-04-0339	POUR: FI-VI10902510, FI-VI12902510, FI-VI14902510
13	* SP-04-0340	POUR: FI-VI14112510
13	* SP-04-0341	POUR: FI-VI16902510, FI-VI18902510
13	* SP-04-0342	POUR: FI-VI16112510, FI-VI18112510, FI-VI20112510
13	* SP-04-0343	POUR: FI-VI16122510, FI-VI18122510
13	* SP-04-0344	POUR: FI-VI18142510
13	* SP-04-0345	POUR: FI-VI20122510
13	* SP-04-0346	POUR: FI-VI20142510
13	* SP-04-0347	POUR: FI-VI20162510
18	* SP-04-0352	POUR: FI-VI10632510, FI-VI10752510, FI-VI10902510
18	* SP-04-0353	POUR: FI-VI12752510, FI-VI12902510
18	* SP-04-0354	POUR: FI-VI14752510, FI-VI14902510, FI-VI14112510
18	* SP-04-0355	POUR: FI-VI16902510, FI-VI16112510, FI-VI16122510
18	* SP-04-0356	POUR: FI-VI18902510, FI-VI18112510, FI-VI18122510, FI-VI18142510
18	* SP-04-0357	POUR: FI-VI20112510, FI-VI20122510, FI-VI20142510, FI-VI20162510
20	* SP-04-0359	POUR: FI-VI10632510, FI-VI10752510, FI-VI10902510
20	* SP-04-0360	POUR: FI-VI12752510, FI-VI12902510
20	* SP-04-0361	POUR: FI-VI14752510, FI-VI14902510, FI-VI14112510
20	* SP-04-0362	POUR: FI-VI16902510, FI-VI16112510, FI-VI16122510
20	* SP-04-0363	POUR: FI-VI18902510, FI-VI18112510, FI-VI18122510, FI-VI18142510
20	* SP-04-0364	POUR: FI-VI20112510, FI-VI20122510, FI-VI20142510, FI-VI20162510

CODE **FI-VI10632510, FI-VI10752510, FI-VI10902510, FI-VI12752510,**
FI-VI12902510, FI-VI14752510, FI-VI14902510, FI-VI14112510,
FI-VI16902510, FI-VI16112510, FI-VI16122510, FI-VI18902510,
FI-VI18112510, FI-VI18122510, FI-VI18142510, FI-VI20112510,
FI-VI20122510, FI-VI20142510, FI-VI20162510

DESCRIPTION: FILTRE VIENA 2,5 KG. D.1050-1200-1400-1600-1800-2000

21	* SP-04-0365	POUR: FI-VI16902510 [2UT], FI-VI16112510 [2UT], FI-VI16122510 [2UT], FI-VI18902510 [2UT], FI-VI18112510 [2UT], FI-VI18122510 [2UT], FI-VI18142510 [2UT], FI-VI20112510 [2UT], FI-VI20122510 [2UT], FI-VI20142510 [2UT], FI-VI20162510 [2UT]
21	* SP-04-0366	POUR: FI-VI18902510 [2UT], FI-VI18112510 [2UT], FI-VI18122510 [2UT], FI-VI18142510 [2UT]
21	* SP-04-0367	POUR: FI-VI14752510 [2UT], FI-VI14902510 [2UT], FI-VI14112510 [2UT], FI-VI16902510 [2UT], FI-VI16112510 [2UT], FI-VI16122510 [2UT]
21	* SP-04-0368	POUR: FI-VI14752510 [2UT], FI-VI14902510 [2UT], FI-VI14112510 [2UT], FI-VI16902510 [2UT], FI-VI16112510 [2UT], FI-VI16122510 [2UT]
21	* SP-04-0369	POUR: FI-VI10632510 [2UT], FI-VI10752510 [2UT], FI-VI10902510 [2UT], FI-VI14752510 [2UT], FI-VI14902510 [2UT], FI-VI14112510 [2UT], FI-VI16902510 [3UT], FI-VI16112510 [3UT], FI-VI16122510 [3UT]
21	* SP-04-0370	POUR: FI-VI10632510 [3UT], FI-VI10752510 [3UT], FI-VI10902510 [3UT], FI-VI12752510 [2UT], FI-VI12902510 [2UT], FI-VI18902510 [2UT], FI-VI18112510 [2UT], FI-VI18122510 [2UT], FI-VI18142510 [2UT], FI-VI20112510 [2UT], FI-VI20122510 [2UT], FI-VI20142510 [2UT], FI-VI20162510 [2UT]
21	* SP-04-0371	POUR: FI-VI12752510 [3UT], FI-VI12902510 [3UT], FI-VI18902510 [2UT], FI-VI18112510 [2UT], FI-VI18122510 [2UT], FI-VI18142510 [2UT], FI-VI20112510 [2UT], FI-VI20122510 [2UT], FI-VI20142510 [2UT], FI-VI20162510 [2UT]
21	* SP-04-0372	POUR: FI-VI14752510 [2UT], FI-VI14902510 [2UT], FI-VI14112510 [2UT], FI-VI18902510 [3UT], FI-VI18112510 [3UT], FI-VI18122510 [3UT], FI-VI18142510 [3UT], FI-VI20112510 [3UT], FI-VI20122510 [3UT], FI-VI20142510 [3UT], FI-VI20162510 [3UT]
21	* SP-04-0373	POUR: FI-VI14752510 [3UT], FI-VI14902510 [3UT], FI-VI14112510 [3UT]
22	* SP-04-0374	POUR: FI-VI10632510
22	* SP-04-0375	POUR: FI-VI10752510
22	* SP-04-0376	POUR: FI-VI10902510
22	* SP-04-0377	POUR: FI-VI12752510
22	* SP-04-0378	POUR: FI-VI12902510
22	* SP-04-0379	POUR: FI-VI14752510
22	* SP-04-0380	POUR: FI-VI14902510
22	* SP-04-0381	POUR: FI-VI14112510
22	* SP-04-0382	POUR: FI-VI16902510
22	* SP-04-0383	POUR: FI-VI16112510
22	* SP-04-0384	POUR: FI-VI16122510
22	* SP-04-0385	POUR: FI-VI18902510
22	* SP-04-0386	POUR: FI-VI18112510
22	* SP-04-0387	POUR: FI-VI18122510
22	* SP-04-0388	POUR: FI-VI18142510
22	* SP-04-0389	POUR: FI-VI20112510
22	* SP-04-0390	POUR: FI-VI20122510
22	* SP-04-0391	POUR: FI-VI20142510
22	* SP-04-0392	POUR: FI-VI20162510
23	* SP-04-0393	POUR: FI-VI14112510
23	* SP-04-0394	POUR: FI-VI16902510
23	* SP-04-0395	POUR: FI-VI16112510
23	* SP-04-0396	POUR: FI-VI16122510
23	* SP-04-0397	POUR: FI-VI18902510
23	* SP-04-0398	POUR: FI-VI18112510
23	* SP-04-0399	POUR: FI-VI18122510
23	* SP-04-0400	POUR: FI-VI18142510
23	* SP-04-0401	POUR: FI-VI20112510



ÉCLATÉ

REV.: 0

9154

DATE: 02/06/2022

PAG.: 5/5

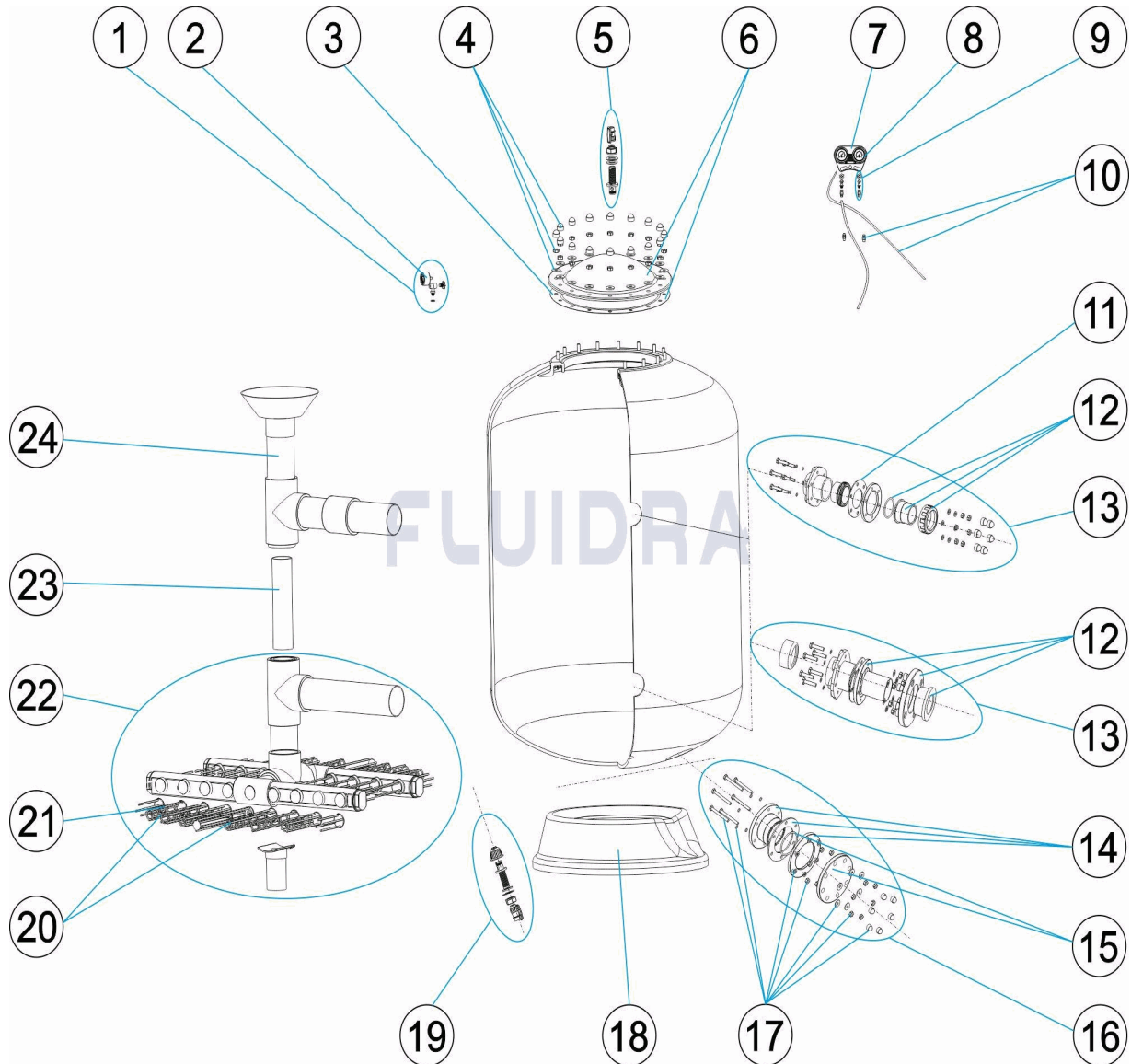
CODE **FI-VI10632510, FI-VI10752510, FI-VI10902510, FI-VI12752510,
FI-VI12902510, FI-VI14752510, FI-VI14902510, FI-VI14112510,
FI-VI16902510, FI-VI16112510, FI-VI16122510, FI-VI18902510,
FI-VI18112510, FI-VI18122510, FI-VI18142510, FI-VI20112510,
FI-VI20122510, FI-VI20142510, FI-VI20162510**

DESCRIPTION: **FILTRE VIENA 2,5 KG. D.1050-1200-1400-1600-1800-2000**

23	* SP-04-0402	POUR: FI-VI20122510
23	* SP-04-0403	POUR: FI-VI20142510
23	* SP-04-0404	POUR: FI-VI20162510
24	* SP-04-0405	POUR: FI-VI10632510
24	* SP-04-0406	POUR: FI-VI10752510
24	* SP-04-0407	POUR: FI-VI10902510
24	* SP-04-0408	POUR: FI-VI12752510
24	* SP-04-0409	POUR: FI-VI12902510
24	* SP-04-0410	POUR: FI-VI14752510
24	* SP-04-0411	POUR: FI-VI14902510
24	* SP-04-0412	POUR: FI-VI14112510
24	* SP-04-0413	POUR: FI-VI16902510
24	* SP-04-0414	POUR: FI-VI16112510
24	* SP-04-0415	POUR: FI-VI16122510
24	* SP-04-0416	POUR: FI-VI18902510
24	* SP-04-0417	POUR: FI-VI18112510
24	* SP-04-0418	POUR: FI-VI18122510
24	* SP-04-0419	POUR: FI-VI18142510
24	* SP-04-0420	POUR: FI-VI20112510
24	* SP-04-0421	POUR: FI-VI20122510
24	* SP-04-0422	POUR: FI-VI20142510
24	* SP-04-0423	POUR: FI-VI20162510

CODE FI-VI10632510, FI-VI10752510, FI-VI10902510, FI-VI12752510,
FI-VI12902510, FI-VI14752510, FI-VI14902510, FI-VI14112510,
FI-VI16902510, FI-VI16112510, FI-VI16122510, FI-VI18902510,
FI-VI18112510, FI-VI18122510, FI-VI18142510, FI-VI20112510,
FI-VI20122510, FI-VI20142510, FI-VI20162510

DESCRIPTION: VIENA FILTER 2,5 KG. D.1050-1200-1400-1600-1800-2000



ENGLISH

POS	CODE	DESCRIPTION	QUANTITY	POS	CODE	DESCRIPTION	QUANTITY
1	* SP-04-0071	COMPLETE PRESSURE GAUGE UNIT		12	* SP-04-0333	FLANGE FITTING 125 + BUSHING	
2	* SP-04-0072	PRESSURE GAUGE 1/8" 3 KG./C "		12	* SP-04-0334	FLANGE FITTING 140 + BUSHING	
3	SP-04-0305	LID 'O' RING		12	* SP-04-0335	FLANGE 160 PVC + BUSHING	
4	SP-04-0323	FILTER LID BOLTS		13	* SP-04-0336	KIT INLET/ONTLET D.63-1050	
5	SP-04-0324	DRAIN SET		13	* SP-04-0337	KIT INLET/ONTLET D.75-1050-1200	
6	SP-04-0304	FILTER LID + GASKET		13	* SP-04-0338	KIT INLET/ONTLET D.75-1400	
7	SP-04-0325	PRESSURE GAUGE PANEL BODY		13	* SP-04-0339	KIT INLET/ONTLET D.90-1050-1200-1400	
8	* SP-04-0326	PRESSURE GAUGE 3 BAR		13	* SP-04-0340	KIT INLET/ONTLET D.110-1400	
9	* SP-04-0327	AIR BLEED ASSEMBLY		13	* SP-04-0341	KIT INLET/ONTLET D.90-1600-1800	



PARTS BREAKDOWN

REV.: 0

9154

DATE: 02/06/2022

SHEET: 2/5

CODE

**FI-VI10632510, FI-VI10752510, FI-VI10902510, FI-VI12752510,
 FI-VI12902510, FI-VI14752510, FI-VI14902510, FI-VI14112510,
 FI-VI16902510, FI-VI16112510, FI-VI16122510, FI-VI18902510,
 FI-VI18112510, FI-VI18122510, FI-VI18142510, FI-VI20112510,
 FI-VI20122510, FI-VI20142510, FI-VI20162510**

DESCRIPTION: VIENA FILTER 2,5 KG. D.1050-1200-1400-1600-1800-2000

10	* SP-04-0328	PRESSURE FITTINGS + TUBE	13	* SP-04-0342	KIT INLET/ONTLET D.110-1600-1800-2000
11	* SP-04-0329	GASKET OUTLET D. 63 - 75	13	* SP-04-0343	KIT INLET/ONTLET D.125-1600-1800
12	* SP-04-0278	3 PIECE CONNECTION D63/75	13	* SP-04-0344	KIT INLET/ONTLET D.140
12	* SP-04-0330	FLANGE FITTING 75 + BUSHING	13	* SP-04-0345	KIT INLET/ONTLET D.125-2000
12	* SP-04-0331	FLANGE FITTING 90 + FITTING	13	* SP-04-0346	KIT INLET/ONTLET D.140-2000
12	* SP-04-0332	FLANGE FITTING 110 + FITTING	13	* SP-04-0347	KIT INLET/ONTLET D.160-2000
14	SP-04-0348	SAND PURGE 90	22	* SP-04-0386	MANIFOLD ASSEMBLY BP.1800-110 + SUPP
15	SP-04-0349	BLANK FLANGE 90 + O-RING	22	* SP-04-0387	MANIFOLD ASSEMBLY BP.1800-125 + SUPP
16	SP-04-0350	SET DRAIN FILTRATION SAND	22	* SP-04-0388	MANIFOLD ASSEMBLY BP.1800-140 + SUPP
17	SP-04-0351	SCREW SET SAND DISCHARGE D.90	22	* SP-04-0389	MANIFOLD ASSEMBLY BP.2000-110 + SUPP
18	* SP-04-0352	FILTER BASE D.1050	22	* SP-04-0390	MANIFOLD ASSEMBLY BP.2000-125 + SUPP
18	* SP-04-0353	FILTER BASE D.1200	22	* SP-04-0391	MANIFOLD ASSEMBLY BP.2000-140 + SUPP
18	* SP-04-0354	FILTER BASE D.1400	22	* SP-04-0392	MANIFOLD ASSEMBLY BP.2000-160 + SUPP
18	* SP-04-0355	FILTER BASE D.1600	23	* SP-04-0393	SOPORTE DIFUSOR FILTRO 1.400 - 110
18	* SP-04-0356	FILTER BASE D.1800	23	* SP-04-0394	SOPORTE DIFUSOR FILTRO 1600-90
18	* SP-04-0357	FILTER BASE D.2000	23	* SP-04-0395	SOPORTE DIFUSOR FILTRO 1600-110
19	SP-04-0358	WATER PURGE "	23	* SP-04-0396	SOPORTE DIFUSOR FILTRO 1600-125
20	* SP-04-0359	MANIFOLD ARM ASSEMBLY D. 1050	23	* SP-04-0397	SOPORTE DIFUSOR FILTRO 1800-90
20	* SP-04-0360	MANIFOLD ARM ASSEMBLY D. 1200	23	* SP-04-0398	SOPORTE DIFUSOR FILTRO 1800-110
20	* SP-04-0361	MANIFOLD ARM ASSEMBLY D. 1400	23	* SP-04-0399	SOPORTE DIFUSOR FILTRO 1800-125
20	* SP-04-0362	MANIFOLD ARM ASSEMBLY D. 1600	23	* SP-04-0400	SOPORTE DIFUSOR FILTRO 1800-140
20	* SP-04-0363	MANIFOLD ARM ASSEMBLY D. 1800	23	* SP-04-0401	SOPORTE DIFUSOR FILTRO 2000-110
20	* SP-04-0364	MANIFOLD ARM ASSEMBLY D. 2000	23	* SP-04-0402	SOPORTE DIFUSOR FILTRO 2000-125
21	* SP-04-0365	MANIFOLD ARM 11/2 90 M/M.	23	* SP-04-0403	SOPORTE DIFUSOR FILTRO 2000-140
21	* SP-04-0366	MANIFOLD ARM 11/2" 160 M/M "	23	* SP-04-0404	SOPORTE DIFUSOR FILTRO 2000-160
21	* SP-04-0367	MANIFOLD ARM 11/2" 225 M/M "	24	* SP-04-0405	DIFFUSER ASSEMBLY BP.1050-63
21	* SP-04-0368	MANIFOLD ARM 11/2" 260 M/M "	24	* SP-04-0406	DIFFUSER ASSEMBLY BP.1050-75
21	* SP-04-0369	MANIFOLD ARM 11/2" 325 M/M "	24	* SP-04-0407	DIFFUSER ASSEMBLY BP.1050-90
21	* SP-04-0370	MANIFOLD ARM 11/2" 360 M/M "	24	* SP-04-0408	DIFFUSER ASSEMBLY BP.1200-75
21	* SP-04-0371	MANIFOLD ARM 11/2" 425 M/M "	24	* SP-04-0409	DIFFUSER ASSEMBLY BP.1200-90
21	* SP-04-0372	MANIFOLD ARM 11/2" 460 M/M "	24	* SP-04-0410	DIFFUSER ASSEMBLY BP.1400-75
21	* SP-04-0373	MANIFOLD ARM 11/2" 525 M/M "	24	* SP-04-0411	DIFFUSER ASSEMBLY BP.1400-90
22	* SP-04-0374	MANIFOLD ASSEMBLY BP.1050-63	24	* SP-04-0412	DIFFUSER ASSEMBLY BP.1400-110
22	* SP-04-0375	MANIFOLD ASSEMBLY BP.1050-75	24	* SP-04-0413	DIFFUSER ASSEMBLY BP.1600-90
22	* SP-04-0376	MANIFOLD ASSEMBLY BP.1050-90	24	* SP-04-0414	DIFFUSER ASSEMBLY BP.1600-110
22	* SP-04-0377	MANIFOLD ASSEMBLY BP.1200-75	24	* SP-04-0415	DIFFUSER ASSEMBLY BP.1600-125
22	* SP-04-0378	MANIFOLD ASSEMBLY BP.1200-90	24	* SP-04-0416	DIFFUSER ASSEMBLY BP.1800-90
22	* SP-04-0379	MANIFOLD ASSEMBLY BP.1400-75	24	* SP-04-0417	DIFFUSER ASSEMBLY BP.1800-110
22	* SP-04-0380	MANIFOLD ASSEMBLY BP.1400-90	24	* SP-04-0418	DIFFUSER ASSEMBLY BP.1800-125
22	* SP-04-0381	MANIFOLD ASSEMBLY BP.1400-110	24	* SP-04-0419	DIFFUSER ASSEMBLY BP.1800-140
22	* SP-04-0382	MANIFOLD ASSEMBLY BP.1600-90 + SUPP	24	* SP-04-0420	DIFFUSER ASSEMBLY BP.2000-110
22	* SP-04-0383	MANIFOLD ASSEMBLY BP.1600-110 + SUPP	24	* SP-04-0421	DIFFUSER ASSEMBLY BP.2000-125
22	* SP-04-0384	MANIFOLD ASSEMBLY BP.1600-125 + SUPP	24	* SP-04-0422	DIFFUSER ASSEMBLY BP.2000-140
22	* SP-04-0385	MANIFOLD ASSEMBLY BP.1800-90 + SUPP	24	* SP-04-0423	DIFFUSER ASSEMBLY BP.2000-160

* SEE OBSERVATIONS SHEET



PARTS BREAKDOWN

REV.: 0
DATE: 02/06/2022
SHEET: 3/5

9154

CODE **FI-VI10632510, FI-VI10752510, FI-VI10902510, FI-VI12752510,
FI-VI12902510, FI-VI14752510, FI-VI14902510, FI-VI14112510,
FI-VI16902510, FI-VI16112510, FI-VI16122510, FI-VI18902510,
FI-VI18112510, FI-VI18122510, FI-VI18142510, FI-VI20112510,
FI-VI20122510, FI-VI20142510, FI-VI20162510**

DESCRIPTION: **VIENA FILTER 2,5 KG. D.1050-1200-1400-1600-1800-2000**

OBSERVATIONS

POS	CODE	OBSERVATIONS
1	* SP-04-0071	FOR: FI-VI10632510
2	* SP-04-0072	FOR: FI-VI10632510
8	* SP-04-0326	FOR: FI-VI10752510, FI-VI10902510, FI-VI12752510, FI-VI12902510, FI-VI14752510, FI-VI14902510, FI-VI14112510, FI-VI16902510, FI-VI16112510, FI-VI16122510, FI-VI18902510, FI-VI18112510, FI-VI18122510, FI-VI18142510, FI-VI20112510, FI-VI20122510, FI-VI20142510, FI-VI20162510
9	* SP-04-0327	FOR: FI-VI10752510, FI-VI10902510, FI-VI12752510, FI-VI12902510, FI-VI14752510, FI-VI14902510, FI-VI14112510, FI-VI16902510, FI-VI16112510, FI-VI16122510, FI-VI18902510, FI-VI18112510, FI-VI18122510, FI-VI18142510, FI-VI20112510, FI-VI20122510, FI-VI20142510, FI-VI20162510
10	* SP-04-0328	FOR: FI-VI10752510, FI-VI10902510, FI-VI12752510, FI-VI12902510, FI-VI14752510, FI-VI14902510, FI-VI14112510, FI-VI16902510, FI-VI16112510, FI-VI16122510, FI-VI18902510, FI-VI18112510, FI-VI18122510, FI-VI18142510, FI-VI20112510, FI-VI20122510, FI-VI20142510, FI-VI20162510
11	* SP-04-0329	FOR: FI-VI10632510
12	* SP-04-0278	FOR: FI-VI10632510
12	* SP-04-0330	FOR: FI-VI10752510, FI-VI12752510, FI-VI14752510
12	* SP-04-0331	FOR: FI-VI10902510, FI-VI12902510, FI-VI14902510, FI-VI16902510, FI-VI18902510
12	* SP-04-0332	FOR: FI-VI14112510, FI-VI16112510, FI-VI18112510, FI-VI20112510
12	* SP-04-0333	FOR: FI-VI16122510, FI-VI18122510, FI-VI20122510
12	* SP-04-0334	FOR: FI-VI18142510, FI-VI20142510
12	* SP-04-0335	FOR: FI-VI20162510
13	* SP-04-0336	FOR: FI-VI10632510
13	* SP-04-0337	FOR: FI-VI10752510, FI-VI12752510
13	* SP-04-0338	FOR: FI-VI14752510
13	* SP-04-0339	FOR: FI-VI10902510, FI-VI12902510, FI-VI14902510
13	* SP-04-0340	FOR: FI-VI14112510
13	* SP-04-0341	FOR: FI-VI16902510, FI-VI18902510
13	* SP-04-0342	FOR: FI-VI16112510, FI-VI18112510, FI-VI20112510
13	* SP-04-0343	FOR: FI-VI16122510, FI-VI18122510
13	* SP-04-0344	FOR: FI-VI18142510
13	* SP-04-0345	FOR: FI-VI20122510
13	* SP-04-0346	FOR: FI-VI20142510
13	* SP-04-0347	FOR: FI-VI20162510
18	* SP-04-0352	FOR: FI-VI10632510, FI-VI10752510, FI-VI10902510
18	* SP-04-0353	FOR: FI-VI12752510, FI-VI12902510
18	* SP-04-0354	FOR: FI-VI14752510, FI-VI14902510, FI-VI14112510
18	* SP-04-0355	FOR: FI-VI16902510, FI-VI16112510, FI-VI16122510
18	* SP-04-0356	FOR: FI-VI18902510, FI-VI18112510, FI-VI18122510, FI-VI18142510
18	* SP-04-0357	FOR: FI-VI20112510, FI-VI20122510, FI-VI20142510, FI-VI20162510
20	* SP-04-0359	FOR: FI-VI10632510, FI-VI10752510, FI-VI10902510
20	* SP-04-0360	FOR: FI-VI12752510, FI-VI12902510
20	* SP-04-0361	FOR: FI-VI14752510, FI-VI14902510, FI-VI14112510
20	* SP-04-0362	FOR: FI-VI16902510, FI-VI16112510, FI-VI16122510
20	* SP-04-0363	FOR: FI-VI18902510, FI-VI18112510, FI-VI18122510, FI-VI18142510
20	* SP-04-0364	FOR: FI-VI20112510, FI-VI20122510, FI-VI20142510, FI-VI20162510

* SEE OBSERVATIONS SHEET



PARTS BREAKDOWN

REV.: 0
DATE: 02/06/2022
SHEET: 4/5

9154

CODE **FI-VI10632510, FI-VI10752510, FI-VI10902510, FI-VI12752510,
FI-VI12902510, FI-VI14752510, FI-VI14902510, FI-VI14112510,
FI-VI16902510, FI-VI16112510, FI-VI16122510, FI-VI18902510,
FI-VI18112510, FI-VI18122510, FI-VI18142510, FI-VI20112510,
FI-VI20122510, FI-VI20142510, FI-VI20162510**

DESCRIPTION: **VIENA FILTER 2,5 KG. D.1050-1200-1400-1600-1800-2000**

21	* SP-04-0365	FOR: FI-VI16902510 [2UT], FI-VI16112510 [2UT], FI-VI16122510 [2UT], FI-VI18902510 [2UT], FI-VI18112510 [2UT], FI-VI18122510 [2UT], FI-VI18142510 [2UT], FI-VI20112510 [2UT], FI-VI20122510 [2UT], FI-VI20142510 [2UT], FI-VI20162510 [2UT]
21	* SP-04-0366	FOR: FI-VI18902510 [2UT], FI-VI18112510 [2UT], FI-VI18122510 [2UT], FI-VI18142510 [2UT]
21	* SP-04-0367	FOR: FI-VI14752510 [2UT], FI-VI14902510 [2UT], FI-VI14112510 [2UT], FI-VI16902510 [2UT], FI-VI16112510 [2UT], FI-VI16122510 [2UT]
21	* SP-04-0368	FOR: FI-VI14752510 [2UT], FI-VI14902510 [2UT], FI-VI14112510 [2UT], FI-VI16902510 [2UT], FI-VI16112510 [2UT], FI-VI16122510 [2UT]
21	* SP-04-0369	FOR: FI-VI10632510 [2UT], FI-VI10752510 [2UT], FI-VI10902510 [2UT], FI-VI14752510 [2UT], FI-VI14902510 [2UT], FI-VI14112510 [2UT], FI-VI16902510 [3UT], FI-VI16112510 [3UT], FI-VI16122510 [3UT]
21	* SP-04-0370	FOR: FI-VI10632510 [3UT], FI-VI10752510 [3UT], FI-VI10902510 [3UT], FI-VI12752510 [2UT], FI-VI12902510 [2UT], FI-VI18902510 [2UT], FI-VI18112510 [2UT], FI-VI18122510 [2UT], FI-VI18142510 [2UT], FI-VI20112510 [2UT], FI-VI20122510 [2UT], FI-VI20142510 [2UT], FI-VI20162510 [2UT]
21	* SP-04-0371	FOR: FI-VI12752510 [3UT], FI-VI12902510 [3UT], FI-VI18902510 [2UT], FI-VI18112510 [2UT], FI-VI18122510 [2UT], FI-VI18142510 [2UT], FI-VI20112510 [2UT], FI-VI20122510 [2UT], FI-VI20142510 [2UT], FI-VI20162510 [2UT]
21	* SP-04-0372	FOR: FI-VI14752510 [2UT], FI-VI14902510 [2UT], FI-VI14112510 [2UT], FI-VI18902510 [3UT], FI-VI18112510 [3UT], FI-VI18122510 [3UT], FI-VI18142510 [3UT], FI-VI20112510 [3UT], FI-VI20122510 [3UT], FI-VI20142510 [3UT]
21	* SP-04-0373	FOR: FI-VI14752510 [3UT], FI-VI14902510 [3UT], FI-VI14112510 [3UT]
22	* SP-04-0374	FOR: FI-VI10632510
22	* SP-04-0375	FOR: FI-VI10752510
22	* SP-04-0376	FOR: FI-VI10902510
22	* SP-04-0377	FOR: FI-VI12752510
22	* SP-04-0378	FOR: FI-VI12902510
22	* SP-04-0379	FOR: FI-VI14752510
22	* SP-04-0380	FOR: FI-VI14902510
22	* SP-04-0381	FOR: FI-VI14112510
22	* SP-04-0382	FOR: FI-VI16902510
22	* SP-04-0383	FOR: FI-VI16112510
22	* SP-04-0384	FOR: FI-VI16122510
22	* SP-04-0385	FOR: FI-VI18902510
22	* SP-04-0386	FOR: FI-VI18112510
22	* SP-04-0387	FOR: FI-VI18122510
22	* SP-04-0388	FOR: FI-VI18142510
22	* SP-04-0389	FOR: FI-VI20112510
22	* SP-04-0390	FOR: FI-VI20122510
22	* SP-04-0391	FOR: FI-VI20142510
22	* SP-04-0392	FOR: FI-VI20162510
23	* SP-04-0393	FOR: FI-VI14112510
23	* SP-04-0394	FOR: FI-VI16902510
23	* SP-04-0395	FOR: FI-VI16112510
23	* SP-04-0396	FOR: FI-VI16122510
23	* SP-04-0397	FOR: FI-VI18902510
23	* SP-04-0398	FOR: FI-VI18112510
23	* SP-04-0399	FOR: FI-VI18122510
23	* SP-04-0400	FOR: FI-VI18142510
23	* SP-04-0401	FOR: FI-VI20112510

* SEE OBSERVATIONS SHEET



PARTS BREAKDOWN

REV.: 0
DATE: 02/06/2022
SHEET: 5/5

9154

CODE **FI-VI10632510, FI-VI10752510, FI-VI10902510, FI-VI12752510,
FI-VI12902510, FI-VI14752510, FI-VI14902510, FI-VI14112510,
FI-VI16902510, FI-VI16112510, FI-VI16122510, FI-VI18902510,
FI-VI18112510, FI-VI18122510, FI-VI18142510, FI-VI20112510,
FI-VI20122510, FI-VI20142510, FI-VI20162510**

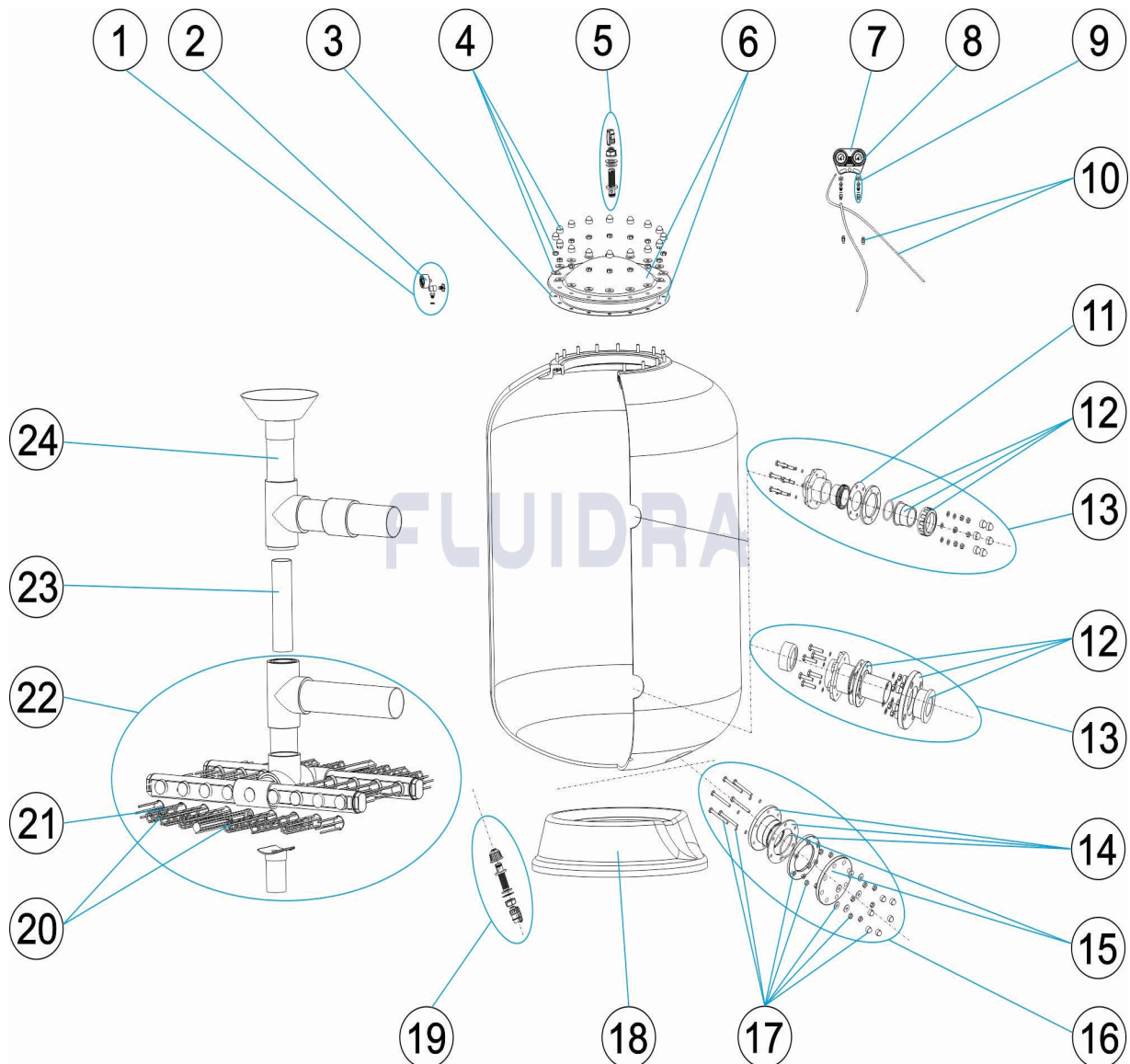
DESCRIPTION: **VIENA FILTER 2,5 KG. D.1050-1200-1400-1600-1800-2000**

23	* SP-04-0402	FOR: FI-VI20122510
23	* SP-04-0403	FOR: FI-VI20142510
23	* SP-04-0404	FOR: FI-VI20162510
24	* SP-04-0405	FOR: FI-VI10632510
24	* SP-04-0406	FOR: FI-VI10752510
24	* SP-04-0407	FOR: FI-VI10902510
24	* SP-04-0408	FOR: FI-VI12752510
24	* SP-04-0409	FOR: FI-VI12902510
24	* SP-04-0410	FOR: FI-VI14752510
24	* SP-04-0411	FOR: FI-VI14902510
24	* SP-04-0412	FOR: FI-VI14112510
24	* SP-04-0413	FOR: FI-VI16902510
24	* SP-04-0414	FOR: FI-VI16112510
24	* SP-04-0415	FOR: FI-VI16122510
24	* SP-04-0416	FOR: FI-VI18902510
24	* SP-04-0417	FOR: FI-VI18112510
24	* SP-04-0418	FOR: FI-VI18122510
24	* SP-04-0419	FOR: FI-VI18142510
24	* SP-04-0420	FOR: FI-VI20112510
24	* SP-04-0421	FOR: FI-VI20122510
24	* SP-04-0422	FOR: FI-VI20142510
24	* SP-04-0423	FOR: FI-VI20162510

CODICE

FI-VI10632510, FI-VI10752510, FI-VI10902510, FI-VI12752510,
 FI-VI12902510, FI-VI14752510, FI-VI14902510, FI-VI14112510,
 FI-VI16902510, FI-VI16112510, FI-VI16122510, FI-VI18902510,
 FI-VI18112510, FI-VI18122510, FI-VI18142510, FI-VI20112510,
 FI-VI20122510, FI-VI20142510, FI-VI20162510

DESCRIZIONE: FILTRO VIENA 2,5 KG. D.1050-1200-1400-1600-1800-2000


ITALIANO

POS	CODICE	DESCRIZIONE	QUANTITA'	POS	CODICE	DESCRIZIONE	QUANTITA'
1	* SP-04-0071	MANOMETRO COMPLETO		12	* SP-04-0333	FLANGIA RACCORDO 125 + MANICOTTO	
2	* SP-04-0072	MANOMETRO 1/8" 3 KG./C "		12	* SP-04-0334	FLANGIA RACCORDO 140 + MANICOTTO	
3	SP-04-0305	O-RING COPERCHIO		12	* SP-04-0335	FLANGIA 160 PVC + MANICOTTO	
4	SP-04-0323	BULLONERIA COPERCHIO FILTRO		13	* SP-04-0336	KIT ENTRATA USCITA D.63-1050	
5	SP-04-0324	KIT SCARICO		13	* SP-04-0337	KIT ENTRATA USCITA D.75-1050-1200	
6	SP-04-0304	COPERCHIO FILTRO + GUARNIZIONE		13	* SP-04-0338	KIT ENTRATA USCITA D.75-1400	
7	SP-04-0325	CORPO PANNELLO MANOMETRI		13	* SP-04-0339	KIT ENTRATA USCITA D.90-1050-1200-1400	
8	* SP-04-0326	MANOMETRO 3 ATM		13	* SP-04-0340	KIT ENTRATA USCITA D.110-1400	
9	* SP-04-0327	SFIATO PANNELLO MANOMETRI		13	* SP-04-0341	KIT ENTRATA USCITA D.90-1600-1800	

* SI FACCI RIFERIMENTO AL FOGLIO DELLE OSSERVAZIONI

CODICE

**FI-VI10632510, FI-VI10752510, FI-VI10902510, FI-VI12752510,
 FI-VI12902510, FI-VI14752510, FI-VI14902510, FI-VI14112510,
 FI-VI16902510, FI-VI16112510, FI-VI16122510, FI-VI18902510,
 FI-VI18112510, FI-VI18122510, FI-VI18142510, FI-VI20112510,
 FI-VI20122510, FI-VI20142510, FI-VI20162510**

DESCRIZIONE: FILTRO VIENA 2,5 KG. D.1050-1200-1400-1600-1800-2000

10	* SP-04-0328	RACCORDO PANNELLO + TUBO	13	* SP-04-0342	KIT ENTRATA USCITA D.110-1600-1800-2000
11	* SP-04-0329	GUARNIZIONE USCITA D. 63 - 75	13	* SP-04-0343	KIT ENTRATA USCITA D.125-1600-1800
12	* SP-04-0278	GHIERA BOCCHETONE D63/75	13	* SP-04-0344	KIT ENTRATA USCITA D.140
12	* SP-04-0330	FLANGIA RACCORDO 75 + MANICOTTO	13	* SP-04-0345	KIT ENTRATA USCITA D.125-2000
12	* SP-04-0331	FLANGIA RACCORDO 90 + MANICOTTO	13	* SP-04-0346	KIT ENTRATA USCITA D.140-2000
12	* SP-04-0332	FLANGIA RACCORDO 110 + MANICOTTO	13	* SP-04-0347	KIT ENTRATA USCITA D.160-2000
14	SP-04-0348	SCARICO SABBIA 90	22	* SP-04-0386	KIT COLLETTORE BP.1800-110 + SUPPORTO
15	SP-04-0349	FLANGIA CIECA 90 + O-RING	22	* SP-04-0387	KIT COLLETTORE BP.1800-125 + SUPPORTO
16	SP-04-0350	KIT SCARIO SABBIA	22	* SP-04-0388	KIT COLLETTORE BP.1600-110 + SUPPORTO
17	SP-04-0351	KIT VITI SCARICO SABBIA D.90	22	* SP-04-0389	KIT COLLETTORE BP.2000-110 + SUPPORTO
18	* SP-04-0352	BASE FILTRO D.1050	22	* SP-04-0390	KIT COLLETTORE BP.2000-125 + SUPPORTO
18	* SP-04-0353	BASE FILTRO D.1200	22	* SP-04-0391	KIT COLLETTORE BP.2000-140 + SUPPORTO
18	* SP-04-0354	BASE FILTRO D.1400	22	* SP-04-0392	KIT COLLETTORE BP.2000-160 + SUPPORTO
18	* SP-04-0355	BASE FILTRO D.1600	23	* SP-04-0393	SUPPORTO DIFFUSORE FILTRO 1400-110
18	* SP-04-0356	BASE FILTRO D.1800	23	* SP-04-0394	SUPPORTO DIFFUSORE FILTRO 1600-90
18	* SP-04-0357	BASE FILTRO D.2000	23	* SP-04-0395	SUPPORTO DIFFUSORE FILTRO 1600-110
19	SP-04-0358	SCARICO ACQUA "	23	* SP-04-0396	SUPPORTO DIFFUSORE FILTRO 1600-125
20	* SP-04-0359	GRUPPO CANDELOTTO COLLECTORE D. 1	23	* SP-04-0397	SUPPORTO DIFFUSORE FILTRO 1800-90
20	* SP-04-0360	GRUPPO CANDELOTTO COLLECTORE D. 1	23	* SP-04-0398	SUPPORTO DIFFUSORE FILTRO 1800-110
20	* SP-04-0361	GRUPPO CANDELOTTO COLLECTORE D. 1	23	* SP-04-0399	SUPPORTO DIFFUSORE FILTRO 1800-125
20	* SP-04-0362	GRUPPO CANDELOTTO COLLECTORE D. 1	23	* SP-04-0400	SUPPORTO DIFFUSORE FILTRO 1800-140
20	* SP-04-0363	GRUPPO CANDELOTTO COLLECTORE D. 1	23	* SP-04-0401	SUPPORTO DIFFUSORE FILTRO 2000-110
20	* SP-04-0364	GRUPPO CANDELOTTO COLLECTORE D. 2	23	* SP-04-0402	SUPPORTO DIFFUSORE FILTRO 2000-125
21	* SP-04-0365	CANDELOTTO COLLECTORE 11/2" 90 M/M	23	* SP-04-0403	SUPPORTO DIFFUSORE FILTRO 2000-140
21	* SP-04-0366	CANDELOTTO COLLECTORE 11/2" 160 M/M	23	* SP-04-0404	SUPPORTO DIFFUSORE FILTRO 2000-160
21	* SP-04-0367	CANDELOTTO COLLECTORE 11/2" 225 M/M	24	* SP-04-0405	RACCORDO DIFFUSORE BP.1050-63
21	* SP-04-0368	CANDELOTTO COLLECTORE 11/2" 260 M/M	24	* SP-04-0406	RACCORDO DIFFUSORE BP.1050-75
21	* SP-04-0369	CANDELOTTO COLLECTORE 11/2" 325 M/M	24	* SP-04-0407	RACCORDO DIFFUSORE BP.1050-90
21	* SP-04-0370	CANDELOTTO COLLECTORE 11/2" 360 M/M	24	* SP-04-0408	RACCORDO DIFFUSORE BP.1200-75
21	* SP-04-0371	CANDELOTTO COLLECTORE 11/2" 425 M/M	24	* SP-04-0409	RACCORDO DIFFUSORE BP.1200-90
21	* SP-04-0372	CANDELOTTO COLLECTORE 11/2" 460 M/M	24	* SP-04-0410	RACCORDO DIFFUSORE BP.1400-75
21	* SP-04-0373	CANDELOTTO COLLECTORE 11/2" 525 M/M	24	* SP-04-0411	RACCORDO DIFFUSORE BP.1400-90
22	* SP-04-0374	KIT COLLETTORE BP.1050-63	24	* SP-04-0412	RACCORDO DIFFUSORE BP.1400-110
22	* SP-04-0375	KIT COLLETTORE BP.1050-75	24	* SP-04-0413	RACCORDO DIFFUSORE BP.1600-90
22	* SP-04-0376	KIT COLLETTORE BP.1050-90	24	* SP-04-0414	RACCORDO DIFFUSORE BP.1600-110
22	* SP-04-0377	KIT COLLETTORE BP.1200-75	24	* SP-04-0415	RACCORDO DIFFUSORE BP.1600-125
22	* SP-04-0378	KIT COLLETTORE BP.1200-90	24	* SP-04-0416	RACCORDO DIFFUSORE BP.1800-90
22	* SP-04-0379	KIT COLLETTORE BP.1400-75	24	* SP-04-0417	RACCORDO DIFFUSORE BP.1800-110
22	* SP-04-0380	KIT COLLETTORE BP.1400-90	24	* SP-04-0418	RACCORDO DIFFUSORE BP.1800-125
22	* SP-04-0381	KIT COLLETTORE BP.1400-110	24	* SP-04-0419	RACCORDO DIFFUSORE BP.1800-140
22	* SP-04-0382	KIT COLLETTORE BP.1600-90 + SUPPORTO	24	* SP-04-0420	RACCORDO DIFFUSORE BP.2000-110
22	* SP-04-0383	KIT COLLETTORE BP.1600-110 + SUPPORTO	24	* SP-04-0421	RACCORDO DIFFUSORE BP.2000-125
22	* SP-04-0384	KIT COLLETTORE BP.1600-125 + SUPPORTO	24	* SP-04-0422	RACCORDO DIFFUSORE BP.2000-140
22	* SP-04-0385	KIT COLLETTORE BP.1800-90 + SUPPORTO	24	* SP-04-0423	RACCORDO DIFFUSORE BP.2000-160

CODICE **FI-VI10632510, FI-VI10752510, FI-VI10902510, FI-VI12752510,
FI-VI12902510, FI-VI14752510, FI-VI14902510, FI-VI14112510,
FI-VI16902510, FI-VI16112510, FI-VI16122510, FI-VI18902510,
FI-VI18112510, FI-VI18122510, FI-VI18142510, FI-VI20112510,
FI-VI20122510, FI-VI20142510, FI-VI20162510**

DESCRIZIONE: FILTRO VIENA 2,5 KG. D.1050-1200-1400-1600-1800-2000

OSSERVAZIONI

POS	CODICE	OSSERVAZIONI
1	* SP-04-0071	PER: FI-VI10632510
2	* SP-04-0072	PER: FI-VI10632510
8	* SP-04-0326	PER: FI-VI10752510, FI-VI10902510, FI-VI12752510, FI-VI12902510, FI-VI14752510, FI-VI14902510, FI-VI14112510, FI-VI16902510, FI-VI16112510, FI-VI16122510, FI-VI18902510, FI-VI18112510, FI-VI18122510, FI-VI18142510, FI-VI20112510, FI-VI20122510, FI-VI20142510, FI-VI20162510
9	* SP-04-0327	PER: FI-VI10752510, FI-VI10902510, FI-VI12752510, FI-VI12902510, FI-VI14752510, FI-VI14902510, FI-VI14112510, FI-VI16902510, FI-VI16112510, FI-VI16122510, FI-VI18902510, FI-VI18112510, FI-VI18122510, FI-VI18142510, FI-VI20112510, FI-VI20122510, FI-VI20142510, FI-VI20162510
10	* SP-04-0328	PER: FI-VI10752510, FI-VI10902510, FI-VI12752510, FI-VI12902510, FI-VI14752510, FI-VI14902510, FI-VI14112510, FI-VI16902510, FI-VI16112510, FI-VI16122510, FI-VI18902510, FI-VI18112510, FI-VI18122510, FI-VI18142510, FI-VI20112510, FI-VI20122510, FI-VI20142510, FI-VI20162510
11	* SP-04-0329	PER: FI-VI10632510
12	* SP-04-0278	PER: FI-VI10632510
12	* SP-04-0330	PER: FI-VI10752510, FI-VI12752510, FI-VI14752510
12	* SP-04-0331	PER: FI-VI10902510, FI-VI12902510, FI-VI14902510, FI-VI16902510, FI-VI18902510
12	* SP-04-0332	PER: FI-VI14112510, FI-VI16112510, FI-VI18112510, FI-VI20112510
12	* SP-04-0333	PER: FI-VI16122510, FI-VI18122510, FI-VI20122510
12	* SP-04-0334	PER: FI-VI18142510, FI-VI20142510
12	* SP-04-0335	PER: FI-VI20162510
13	* SP-04-0336	PER: FI-VI10632510
13	* SP-04-0337	PER: FI-VI10752510, FI-VI12752510
13	* SP-04-0338	PER: FI-VI14752510
13	* SP-04-0339	PER: FI-VI10902510, FI-VI12902510, FI-VI14902510
13	* SP-04-0340	PER: FI-VI14112510
13	* SP-04-0341	PER: FI-VI16902510, FI-VI18902510
13	* SP-04-0342	PER: FI-VI16112510, FI-VI18112510, FI-VI20112510
13	* SP-04-0343	PER: FI-VI16122510, FI-VI18122510
13	* SP-04-0344	PER: FI-VI18142510
13	* SP-04-0345	PER: FI-VI20122510
13	* SP-04-0346	PER: FI-VI20142510
13	* SP-04-0347	PER: FI-VI20162510
18	* SP-04-0352	PER: FI-VI10632510, FI-VI10752510, FI-VI10902510
18	* SP-04-0353	PER: FI-VI12752510, FI-VI12902510
18	* SP-04-0354	PER: FI-VI14752510, FI-VI14902510, FI-VI14112510
18	* SP-04-0355	PER: FI-VI16902510, FI-VI16112510, FI-VI16122510
18	* SP-04-0356	PER: FI-VI18902510, FI-VI18112510, FI-VI18122510, FI-VI18142510
18	* SP-04-0357	PER: FI-VI20112510, FI-VI20122510, FI-VI20142510, FI-VI20162510
20	* SP-04-0359	PER: FI-VI10632510, FI-VI10752510, FI-VI10902510
20	* SP-04-0360	PER: FI-VI12752510, FI-VI12902510
20	* SP-04-0361	PER: FI-VI14752510, FI-VI14902510, FI-VI14112510
20	* SP-04-0362	PER: FI-VI16902510, FI-VI16112510, FI-VI16122510
20	* SP-04-0363	PER: FI-VI18902510, FI-VI18112510, FI-VI18122510, FI-VI18142510
20	* SP-04-0364	PER: FI-VI20112510, FI-VI20122510, FI-VI20142510, FI-VI20162510

CODICE **FI-VI10632510, FI-VI10752510, FI-VI10902510, FI-VI12752510,
FI-VI12902510, FI-VI14752510, FI-VI14902510, FI-VI14112510,
FI-VI16902510, FI-VI16112510, FI-VI16122510, FI-VI18902510,
FI-VI18112510, FI-VI18122510, FI-VI18142510, FI-VI20112510,
FI-VI20122510, FI-VI20142510, FI-VI20162510**

DESCRIZIONE: FILTRO VIENA 2,5 KG. D.1050-1200-1400-1600-1800-2000

21	* SP-04-0365	PER: FI-VI16902510 [2UT], FI-VI16112510 [2UT], FI-VI16122510 [2UT], FI-VI18902510 [2UT], FI-VI18112510 [2UT], FI-VI18122510 [2UT], FI-VI18142510 [2UT], FI-VI20112510 [2UT], FI-VI20122510 [2UT], FI-VI20142510 [2UT], FI-VI20162510 [2UT]
21	* SP-04-0366	PER: FI-VI18902510 [2UT], FI-VI18112510 [2UT], FI-VI18122510 [2UT], FI-VI18142510 [2UT]
21	* SP-04-0367	PER: FI-VI14752510 [2UT], FI-VI14902510 [2UT], FI-VI14112510 [2UT], FI-VI16902510 [2UT], FI-VI16112510 [2UT], FI-VI16122510 [2UT]
21	* SP-04-0368	PER: FI-VI14752510 [2UT], FI-VI14902510 [2UT], FI-VI14112510 [2UT], FI-VI16902510 [2UT], FI-VI16112510 [2UT], FI-VI16122510 [2UT]
21	* SP-04-0369	PER: FI-VI10632510 [2UT], FI-VI10752510 [2UT], FI-VI10902510 [2UT], FI-VI14752510 [2UT], FI-VI14902510 [2UT], FI-VI14112510 [2UT], FI-VI16902510 [3UT], FI-VI16112510 [3UT], FI-VI16122510 [3UT]
21	* SP-04-0370	PER: FI-VI10632510 [3UT], FI-VI10752510 [3UT], FI-VI10902510 [3UT], FI-VI12752510 [2UT], FI-VI12902510 [2UT], FI-VI18902510 [2UT], FI-VI18112510 [2UT], FI-VI18122510 [2UT], FI-VI18142510 [2UT], FI-VI20112510 [2UT], FI-VI20122510 [2UT], FI-VI20142510 [2UT], FI-VI20162510 [2UT]
21	* SP-04-0371	PER: FI-VI12752510 [3UT], FI-VI12902510 [3UT], FI-VI18902510 [2UT], FI-VI18112510 [2UT], FI-VI18122510 [2UT], FI-VI18142510 [2UT], FI-VI20112510 [2UT], FI-VI20122510 [2UT], FI-VI20142510 [2UT], FI-VI20162510 [2UT]
21	* SP-04-0372	PER: FI-VI14752510 [2UT], FI-VI14902510 [2UT], FI-VI14112510 [2UT], FI-VI18902510 [3UT], FI-VI18112510 [3UT], FI-VI18122510 [3UT], FI-VI18142510 [3UT], FI-VI20112510 [3UT], FI-VI20122510 [3UT], FI-VI20142510 [3UT]
21	* SP-04-0373	PER: FI-VI14752510 [3UT], FI-VI14902510 [3UT], FI-VI14112510 [3UT]
22	* SP-04-0374	PER: FI-VI10632510
22	* SP-04-0375	PER: FI-VI10752510
22	* SP-04-0376	PER: FI-VI10902510
22	* SP-04-0377	PER: FI-VI12752510
22	* SP-04-0378	PER: FI-VI12902510
22	* SP-04-0379	PER: FI-VI14752510
22	* SP-04-0380	PER: FI-VI14902510
22	* SP-04-0381	PER: FI-VI14112510
22	* SP-04-0382	PER: FI-VI16902510
22	* SP-04-0383	PER: FI-VI16112510
22	* SP-04-0384	PER: FI-VI16122510
22	* SP-04-0385	PER: FI-VI18902510
22	* SP-04-0386	PER: FI-VI18112510
22	* SP-04-0387	PER: FI-VI18122510
22	* SP-04-0388	PER: FI-VI18142510
22	* SP-04-0389	PER: FI-VI20112510
22	* SP-04-0390	PER: FI-VI20122510
22	* SP-04-0391	PER: FI-VI20142510
22	* SP-04-0392	PER: FI-VI20162510
23	* SP-04-0393	PER: FI-VI14112510
23	* SP-04-0394	PER: FI-VI16902510
23	* SP-04-0395	PER: FI-VI16112510
23	* SP-04-0396	PER: FI-VI16122510
23	* SP-04-0397	PER: FI-VI18902510
23	* SP-04-0398	PER: FI-VI18112510
23	* SP-04-0399	PER: FI-VI18122510
23	* SP-04-0400	PER: FI-VI18142510
23	* SP-04-0401	PER: FI-VI20112510



ESPLOSO

REV.: 0

9154

DATA: 02/06/2022

PAG.: 5/5

CODICE **FI-VI10632510, FI-VI10752510, FI-VI10902510, FI-VI12752510,
FI-VI12902510, FI-VI14752510, FI-VI14902510, FI-VI14112510,
FI-VI16902510, FI-VI16112510, FI-VI16122510, FI-VI18902510,
FI-VI18112510, FI-VI18122510, FI-VI18142510, FI-VI20112510,
FI-VI20122510, FI-VI20142510, FI-VI20162510**

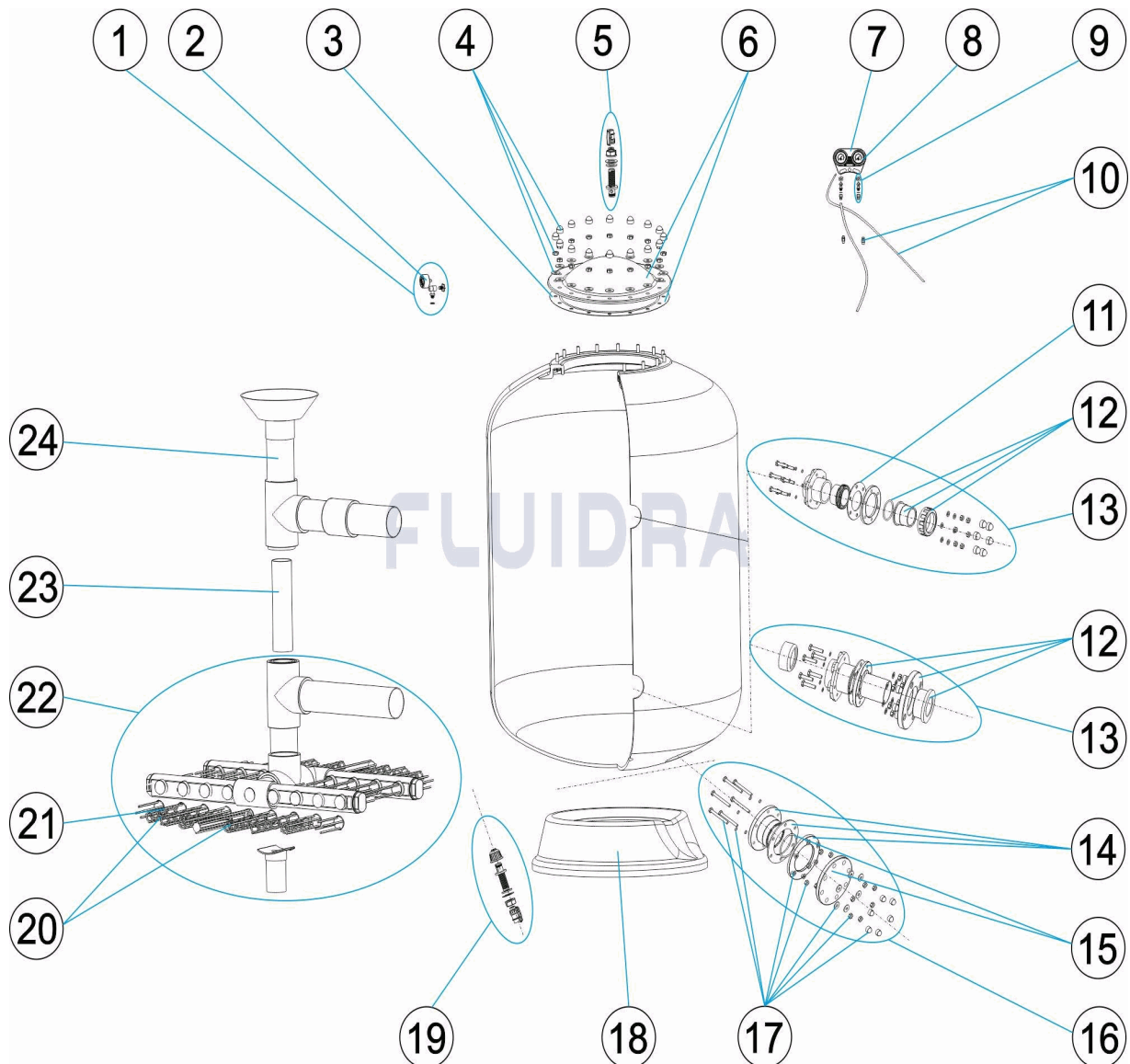
DESCRIZIONE: FILTRO VIENA 2,5 KG. D.1050-1200-1400-1600-1800-2000

23	* SP-04-0402	PER: FI-VI20122510
23	* SP-04-0403	PER: FI-VI20142510
23	* SP-04-0404	PER: FI-VI20162510
24	* SP-04-0405	PER: FI-VI10632510
24	* SP-04-0406	PER: FI-VI10752510
24	* SP-04-0407	PER: FI-VI10902510
24	* SP-04-0408	PER: FI-VI12752510
24	* SP-04-0409	PER: FI-VI12902510
24	* SP-04-0410	PER: FI-VI14752510
24	* SP-04-0411	PER: FI-VI14902510
24	* SP-04-0412	PER: FI-VI14112510
24	* SP-04-0413	PER: FI-VI16902510
24	* SP-04-0414	PER: FI-VI16112510
24	* SP-04-0415	PER: FI-VI16122510
24	* SP-04-0416	PER: FI-VI18902510
24	* SP-04-0417	PER: FI-VI18112510
24	* SP-04-0418	PER: FI-VI18122510
24	* SP-04-0419	PER: FI-VI18142510
24	* SP-04-0420	PER: FI-VI20112510
24	* SP-04-0421	PER: FI-VI20122510
24	* SP-04-0422	PER: FI-VI20142510
24	* SP-04-0423	PER: FI-VI20162510

CODE

FI-VI10632510, FI-VI10752510, FI-VI10902510, FI-VI12752510,
 FI-VI12902510, FI-VI14752510, FI-VI14902510, FI-VI14112510,
 FI-VI16902510, FI-VI16112510, FI-VI16122510, FI-VI18902510,
 FI-VI18112510, FI-VI18122510, FI-VI18142510, FI-VI20112510,
 FI-VI20122510, FI-VI20142510, FI-VI20162510

BESCHREIBUNG: FILTER VIENA 2,5 KG. D.1050-1200-1400-1600-1800-2000


DEUTSCH

POS	CODE	BESCHREIBUNG	MENGE	POS	CODE	BESCHREIBUNG	MENGE
1	* SP-04-0071	MANOMETER KOMPLETT		12	* SP-04-0333	GEWINDEFLANSCH D. 125 MIT NIPPEL	
2	* SP-04-0072	MANOMETER 1/8" 3 KG/C "		12	* SP-04-0334	GEWINDEFLANSCH D. 140 MIT NIPPEL	
3	SP-04-0305	O-RING ABDECKUNG		12	* SP-04-0335	FLANSCH 160 PVC MIT NIPPEL	
4	SP-04-0323	SCHRAUBENSATZ FILTERDECKEL		13	* SP-04-0336	SET EINGANG AUSGANG D. 63 - 75 - 1050	
5	SP-04-0324	SET ABLASS		13	* SP-04-0337	SET EINGANG AUSGANG D. 75 - 1050 - 1200	
6	SP-04-0304	FILTERDECKEL UND DICHTUNG		13	* SP-04-0338	SET EINGANG AUSGANG D. 75 - 1400	
7	SP-04-0325	GEHÄUSE MANOMETER		13	* SP-04-0339	SET EINGANG AUSGANG D. 90 - 1050 - 1200	
8	* SP-04-0326	MANOMETER 3 KG ANONYM		13	* SP-04-0340	SET EINGANG AUSGANG D. 110 - 1400	
9	* SP-04-0327	ABLASS MANOMETER		13	* SP-04-0341	SET EINGANG AUSGANG D. 90 - 1600 - 1800	

* SIEHE ANMERKUNGSBLATT

CODE

**FI-VI10632510, FI-VI10752510, FI-VI10902510, FI-VI12752510,
 FI-VI12902510, FI-VI14752510, FI-VI14902510, FI-VI14112510,
 FI-VI16902510, FI-VI16112510, FI-VI16122510, FI-VI18902510,
 FI-VI18112510, FI-VI18122510, FI-VI18142510, FI-VI20112510,
 FI-VI20122510, FI-VI20142510, FI-VI20162510**

BESCHREIBUNG: FILTER VIENA 2,5 KG. D.1050-1200-1400-1600-1800-2000

10	* SP-04-0328	GEWINDESTÜCK MIT ROHR	13	* SP-04-0342	SET EINGANG AUSGANG D. 110 - 1600 - 180
11	* SP-04-0329	DICHTUNG AUSGANG D. 63 - 75	13	* SP-04-0343	SET EINGANG AUSGANG D. 125 - 1600 - 180
12	* SP-04-0278	VERBINDUNGSMUTTER 3 STK D63/75	13	* SP-04-0344	SET EINGANG AUSGANG D. 140
12	* SP-04-0330	GEWINDEFLANSCH D. 75 MIT NIPPEL	13	* SP-04-0345	SET EINGANG AUSGANG D. 125 - 2000
12	* SP-04-0331	GEWINDEFLANSCH D. 90 MIT NIPPEL	13	* SP-04-0346	SET EINGANG AUSGANG D. 140 - 2000
12	* SP-04-0332	GEWINDEFLANSCH D. 110 MIT NIPPEL	13	* SP-04-0347	SET EINGANG AUSGANG D. 160 - 2000
14	SP-04-0348	SANDENTLEERUNG 90	22	* SP-04-0386	SAMMELROHRSET BP.1800 - 110 MIT HALTI
15	SP-04-0349	BLINDFLANSCH 90 UND O-RING	22	* SP-04-0387	SAMMELROHRSET BP.1800 - 125 MIT HALTI
16	SP-04-0350	SET SANDENTLEERUNG FILTER	22	* SP-04-0388	SAMMELROHRSET BP.1800 - 140 MIT HALTI
17	SP-04-0351	SET SCHRAUBENSATZ SANDAUSLASS D. 1	22	* SP-04-0389	SAMMELROHRSET BP.2000 - 110 MIT HALTI
18	* SP-04-0352	FILTERFUSS D.1050	22	* SP-04-0390	SAMMELROHRSET BP.2000 - 125 MIT HALTI
18	* SP-04-0353	FILTERFUSS D.1200	22	* SP-04-0391	SAMMELROHRSET BP.2000 - 140 MIT HALTI
18	* SP-04-0354	FILTERFUSS D.1400	22	* SP-04-0392	SAMMELROHRSET BP.2000 - 160 MIT HALTI
18	* SP-04-0355	FILTERFUSS D.1600	23	* SP-04-0393	HALTERUNG WASSERVERTEILER FILTER 1
18	* SP-04-0356	FILTERFUSS D.1800	23	* SP-04-0394	HALTERUNG WASSERVERTEILER FILTER 1
18	* SP-04-0357	FILTERFUSS D.2000	23	* SP-04-0395	HALTERUNG WASSERVERTEILER FILTER 1
19	SP-04-0358	WASSERABLASS "	23	* SP-04-0396	HALTERUNG WASSERVERTEILER FILTER 1
20	* SP-04-0359	SET FILTERSTERN-SCHLITZROHR D. 1050	23	* SP-04-0397	HALTERUNG WASSERVERTEILER FILTER 1
20	* SP-04-0360	SET FILTERSTERN-SCHLITZROHR D. 1200	23	* SP-04-0398	HALTERUNG WASSERVERTEILER FILTER 1
20	* SP-04-0361	SET FILTERSTERN-SCHLITZROHR D. 1400	23	* SP-04-0399	HALTERUNG WASSERVERTEILER FILTER 1
20	* SP-04-0362	SET FILTERSTERN-SCHLITZROHR D. 1600	23	* SP-04-0400	HALTERUNG WASSERVERTEILER FILTER 1
20	* SP-04-0363	SET FILTERSTERN-SCHLITZROHR D. 1800	23	* SP-04-0401	HALTERUNG WASSERVERTEILER FILTER 2
20	* SP-04-0364	SET FILTERSTERN-SCHLITZROHR D. 2000	23	* SP-04-0402	HALTERUNG WASSERVERTEILER FILTER 2
21	* SP-04-0365	FILTERSTERN-SCHLITZROHR 11/2" 90 M "	23	* SP-04-0403	HALTERUNG WASSERVERTEILER FILTER 2
21	* SP-04-0366	FILTERSTERN-SCHLITZROHR 11/2" 160 M "	23	* SP-04-0404	HALTERUNG WASSERVERTEILER FILTER 2
21	* SP-04-0367	FILTERSTERN-SCHLITZROHR 11/2" 225 M "	24	* SP-04-0405	SET WASSERVERTEILER BP.1050 - 63
21	* SP-04-0368	FILTERSTERN-SCHLITZROHR 11/2" 260 M "	24	* SP-04-0406	SET WASSERVERTEILER BP.1050 - 75
21	* SP-04-0369	FILTERSTERN-SCHLITZROHR 11/2" 325 M "	24	* SP-04-0407	SET WASSERVERTEILER BP.1050 - 90
21	* SP-04-0370	FILTERSTERN-SCHLITZROHR 11/2" 360 M "	24	* SP-04-0408	SET WASSERVERTEILER BP.1200 - 75
21	* SP-04-0371	FILTERSTERN-SCHLITZROHR 11/2" 425 M "	24	* SP-04-0409	SET WASSERVERTEILER BP.1200 - 90
21	* SP-04-0372	FILTERSTERN-SCHLITZROHR 11/2" 460 M "	24	* SP-04-0410	SET WASSERVERTEILER BP.1400 - 75
21	* SP-04-0373	FILTERSTERN-SCHLITZROHR 11/2" 525 M "	24	* SP-04-0411	SET WASSERVERTEILER BP.1400 - 90
22	* SP-04-0374	SAMMELROHRSET BP.1050 - 63	24	* SP-04-0412	SET WASSERVERTEILER BP.1400 - 110
22	* SP-04-0375	SAMMELROHRSET BP.1050 - 75	24	* SP-04-0413	SET WASSERVERTEILER BP.1600 - 90
22	* SP-04-0376	SAMMELROHRSET BP.1050 - 90	24	* SP-04-0414	SET WASSERVERTEILER BP.1600 - 110
22	* SP-04-0377	SAMMELROHRSET BP.1200 - 75	24	* SP-04-0415	SET WASSERVERTEILER BP.1600 - 125
22	* SP-04-0378	SAMMELROHRSET BP.1200 - 90	24	* SP-04-0416	SET WASSERVERTEILER BP.1800 - 90
22	* SP-04-0379	SAMMELROHRSET BP.1400 - 75	24	* SP-04-0417	SET WASSERVERTEILER BP.1800 - 110
22	* SP-04-0380	SAMMELROHRSET BP.1400 - 90	24	* SP-04-0418	SET WASSERVERTEILER BP.1800 - 125
22	* SP-04-0381	SAMMELROHRSET BP.1400 - 110	24	* SP-04-0419	SET WASSERVERTEILER BP.1800 - 140
22	* SP-04-0382	SAMMELROHRSET BP.1600 - 90 MIT HALTE	24	* SP-04-0420	SET WASSERVERTEILER BP.2000 - 110
22	* SP-04-0383	SAMMELROHRSET BP.1600 - 110 MIT HALT	24	* SP-04-0421	SET WASSERVERTEILER BP.2000 - 125
22	* SP-04-0384	SAMMELROHRSET BP.1600 - 125 MIT HALT	24	* SP-04-0422	SET WASSERVERTEILER BP.2000 - 140
22	* SP-04-0385	SAMMELROHRSET BP.1800 - 90 MIT HALTE	24	* SP-04-0423	SET WASSERVERTEILER BP.2000 - 160

CODE **FI-VI10632510, FI-VI10752510, FI-VI10902510, FI-VI12752510,**
FI-VI12902510, FI-VI14752510, FI-VI14902510, FI-VI14112510,
FI-VI16902510, FI-VI16112510, FI-VI16122510, FI-VI18902510,
FI-VI18112510, FI-VI18122510, FI-VI18142510, FI-VI20112510,
FI-VI20122510, FI-VI20142510, FI-VI20162510

BESCHREIBUNG: FILTER VIENA 2,5 KG. D.1050-1200-1400-1600-1800-2000

HINWEISE

POS	CODE	HINWEISE
1	* SP-04-0071	FÜR: FI-VI10632510
2	* SP-04-0072	FÜR: FI-VI10632510
8	* SP-04-0326	FÜR: FI-VI10752510, FI-VI10902510, FI-VI12752510, FI-VI12902510, FI-VI14752510, FI-VI14902510, FI-VI14112510, FI-VI16902510, FI-VI16112510, FI-VI16122510, FI-VI18902510, FI-VI18112510, FI-VI18122510, FI-VI18142510, FI-VI20112510, FI-VI20122510, FI-VI20142510, FI-VI20162510
9	* SP-04-0327	FÜR: FI-VI10752510, FI-VI10902510, FI-VI12752510, FI-VI12902510, FI-VI14752510, FI-VI14902510, FI-VI14112510, FI-VI16902510, FI-VI16112510, FI-VI16122510, FI-VI18902510, FI-VI18112510, FI-VI18122510, FI-VI18142510, FI-VI20112510, FI-VI20122510, FI-VI20142510, FI-VI20162510
10	* SP-04-0328	FÜR: FI-VI10752510, FI-VI10902510, FI-VI12752510, FI-VI12902510, FI-VI14752510, FI-VI14902510, FI-VI14112510, FI-VI16902510, FI-VI16112510, FI-VI16122510, FI-VI18902510, FI-VI18112510, FI-VI18122510, FI-VI18142510, FI-VI20112510, FI-VI20122510, FI-VI20142510, FI-VI20162510
11	* SP-04-0329	FÜR: FI-VI10632510
12	* SP-04-0278	FÜR: FI-VI10632510
12	* SP-04-0330	FÜR: FI-VI10752510, FI-VI12752510, FI-VI14752510
12	* SP-04-0331	FÜR: FI-VI10902510, FI-VI12902510, FI-VI14902510, FI-VI16902510, FI-VI18902510
12	* SP-04-0332	FÜR: FI-VI14112510, FI-VI16112510, FI-VI18112510, FI-VI20112510
12	* SP-04-0333	FÜR: FI-VI16122510, FI-VI18122510, FI-VI20122510
12	* SP-04-0334	FÜR: FI-VI18142510, FI-VI20142510
12	* SP-04-0335	FÜR: FI-VI20162510
13	* SP-04-0336	FÜR: FI-VI10632510
13	* SP-04-0337	FÜR: FI-VI10752510, FI-VI12752510
13	* SP-04-0338	FÜR: FI-VI14752510
13	* SP-04-0339	FÜR: FI-VI10902510, FI-VI12902510, FI-VI14902510
13	* SP-04-0340	FÜR: FI-VI14112510
13	* SP-04-0341	FÜR: FI-VI16902510, FI-VI18902510
13	* SP-04-0342	FÜR: FI-VI16112510, FI-VI18112510, FI-VI20112510
13	* SP-04-0343	FÜR: FI-VI16122510, FI-VI18122510
13	* SP-04-0344	FÜR: FI-VI18142510
13	* SP-04-0345	FÜR: FI-VI20122510
13	* SP-04-0346	FÜR: FI-VI20142510
13	* SP-04-0347	FÜR: FI-VI20162510
18	* SP-04-0352	FÜR: FI-VI10632510, FI-VI10752510, FI-VI10902510
18	* SP-04-0353	FÜR: FI-VI12752510, FI-VI12902510
18	* SP-04-0354	FÜR: FI-VI14752510, FI-VI14902510, FI-VI14112510
18	* SP-04-0355	FÜR: FI-VI16902510, FI-VI16112510, FI-VI16122510
18	* SP-04-0356	FÜR: FI-VI18902510, FI-VI18112510, FI-VI18122510, FI-VI18142510
18	* SP-04-0357	FÜR: FI-VI20112510, FI-VI20122510, FI-VI20142510, FI-VI20162510
20	* SP-04-0359	FÜR: FI-VI10632510, FI-VI10752510, FI-VI10902510
20	* SP-04-0360	FÜR: FI-VI12752510, FI-VI12902510
20	* SP-04-0361	FÜR: FI-VI14752510, FI-VI14902510, FI-VI14112510
20	* SP-04-0362	FÜR: FI-VI16902510, FI-VI16112510, FI-VI16122510
20	* SP-04-0363	FÜR: FI-VI18902510, FI-VI18112510, FI-VI18122510, FI-VI18142510
20	* SP-04-0364	FÜR: FI-VI20112510, FI-VI20122510, FI-VI20142510, FI-VI20162510

CODE

**FI-VI10632510, FI-VI10752510, FI-VI10902510, FI-VI12752510,
 FI-VI12902510, FI-VI14752510, FI-VI14902510, FI-VI14112510,
 FI-VI16902510, FI-VI16112510, FI-VI16122510, FI-VI18902510,
 FI-VI18112510, FI-VI18122510, FI-VI18142510, FI-VI20112510,
 FI-VI20122510, FI-VI20142510, FI-VI20162510**

BESCHREIBUNG: FILTER VIENA 2,5 KG. D.1050-1200-1400-1600-1800-2000

21	* SP-04-0365	FÜR: FI-VI16902510 [2UT], FI-VI16112510 [2UT], FI-VI16122510 [2UT], FI-VI18902510 [2UT], FI-VI18112510 [2UT], FI-VI18122510 [2UT], FI-VI18142510 [2UT], FI-VI20112510 [2UT], FI-VI20122510 [2UT], FI-VI20142510 [2UT], FI-VI20162510 [2UT]
21	* SP-04-0366	FÜR: FI-VI18902510 [2UT], FI-VI18112510 [2UT], FI-VI18122510 [2UT], FI-VI18142510 [2UT]
21	* SP-04-0367	FÜR: FI-VI14752510 [2UT], FI-VI14902510 [2UT], FI-VI14112510 [2UT], FI-VI16902510 [2UT], FI-VI16112510 [2UT], FI-VI16122510 [2UT]
21	* SP-04-0368	FÜR: FI-VI14752510 [2UT], FI-VI14902510 [2UT], FI-VI14112510 [2UT], FI-VI16902510 [2UT], FI-VI16112510 [2UT], FI-VI16122510 [2UT]
21	* SP-04-0369	FÜR: FI-VI10632510 [2UT], FI-VI10752510 [2UT], FI-VI10902510 [2UT], FI-VI14752510 [2UT], FI-VI14902510 [2UT], FI-VI14112510 [2UT], FI-VI16902510 [3UT], FI-VI16112510 [3UT], FI-VI16122510 [3UT]
21	* SP-04-0370	FÜR: FI-VI10632510 [3UT], FI-VI10752510 [3UT], FI-VI10902510 [3UT], FI-VI12752510 [2UT], FI-VI12902510 [2UT], FI-VI18902510 [2UT], FI-VI18112510 [2UT], FI-VI18122510 [2UT], FI-VI18142510 [2UT], FI-VI20112510 [2UT], FI-VI20122510 [2UT], FI-VI20142510 [2UT], FI-VI20162510 [2UT]
21	* SP-04-0371	FÜR: FI-VI12752510 [3UT], FI-VI12902510 [3UT], FI-VI18902510 [2UT], FI-VI18112510 [2UT], FI-VI18122510 [2UT], FI-VI18142510 [2UT], FI-VI20112510 [2UT], FI-VI20122510 [2UT], FI-VI20142510 [2UT], FI-VI20162510 [2UT]
21	* SP-04-0372	FÜR: FI-VI14752510 [2UT], FI-VI14902510 [2UT], FI-VI14112510 [2UT], FI-VI18902510 [3UT], FI-VI18112510 [3UT], FI-VI18122510 [3UT], FI-VI18142510 [3UT], FI-VI20112510 [3UT], FI-VI20122510 [3UT], FI-VI20142510 [3UT], FI-VI20162510 [3UT]
21	* SP-04-0373	FÜR: FI-VI14752510 [3UT], FI-VI14902510 [3UT], FI-VI14112510 [3UT]
22	* SP-04-0374	FÜR: FI-VI10632510
22	* SP-04-0375	FÜR: FI-VI10752510
22	* SP-04-0376	FÜR: FI-VI10902510
22	* SP-04-0377	FÜR: FI-VI12752510
22	* SP-04-0378	FÜR: FI-VI12902510
22	* SP-04-0379	FÜR: FI-VI14752510
22	* SP-04-0380	FÜR: FI-VI14902510
22	* SP-04-0381	FÜR: FI-VI14112510
22	* SP-04-0382	FÜR: FI-VI16902510
22	* SP-04-0383	FÜR: FI-VI16112510
22	* SP-04-0384	FÜR: FI-VI16122510
22	* SP-04-0385	FÜR: FI-VI18902510
22	* SP-04-0386	FÜR: FI-VI18112510
22	* SP-04-0387	FÜR: FI-VI18122510
22	* SP-04-0388	FÜR: FI-VI18142510
22	* SP-04-0389	FÜR: FI-VI20112510
22	* SP-04-0390	FÜR: FI-VI20122510
22	* SP-04-0391	FÜR: FI-VI20142510
22	* SP-04-0392	FÜR: FI-VI20162510
23	* SP-04-0393	FÜR: FI-VI14112510
23	* SP-04-0394	FÜR: FI-VI16902510
23	* SP-04-0395	FÜR: FI-VI16112510
23	* SP-04-0396	FÜR: FI-VI16122510
23	* SP-04-0397	FÜR: FI-VI18902510
23	* SP-04-0398	FÜR: FI-VI18112510
23	* SP-04-0399	FÜR: FI-VI18122510
23	* SP-04-0400	FÜR: FI-VI18142510
23	* SP-04-0401	FÜR: FI-VI20112510



EINZELTEILE

ÜBER.: 0

9154

DATUM: 02/06/2022

BLATT: 5/5

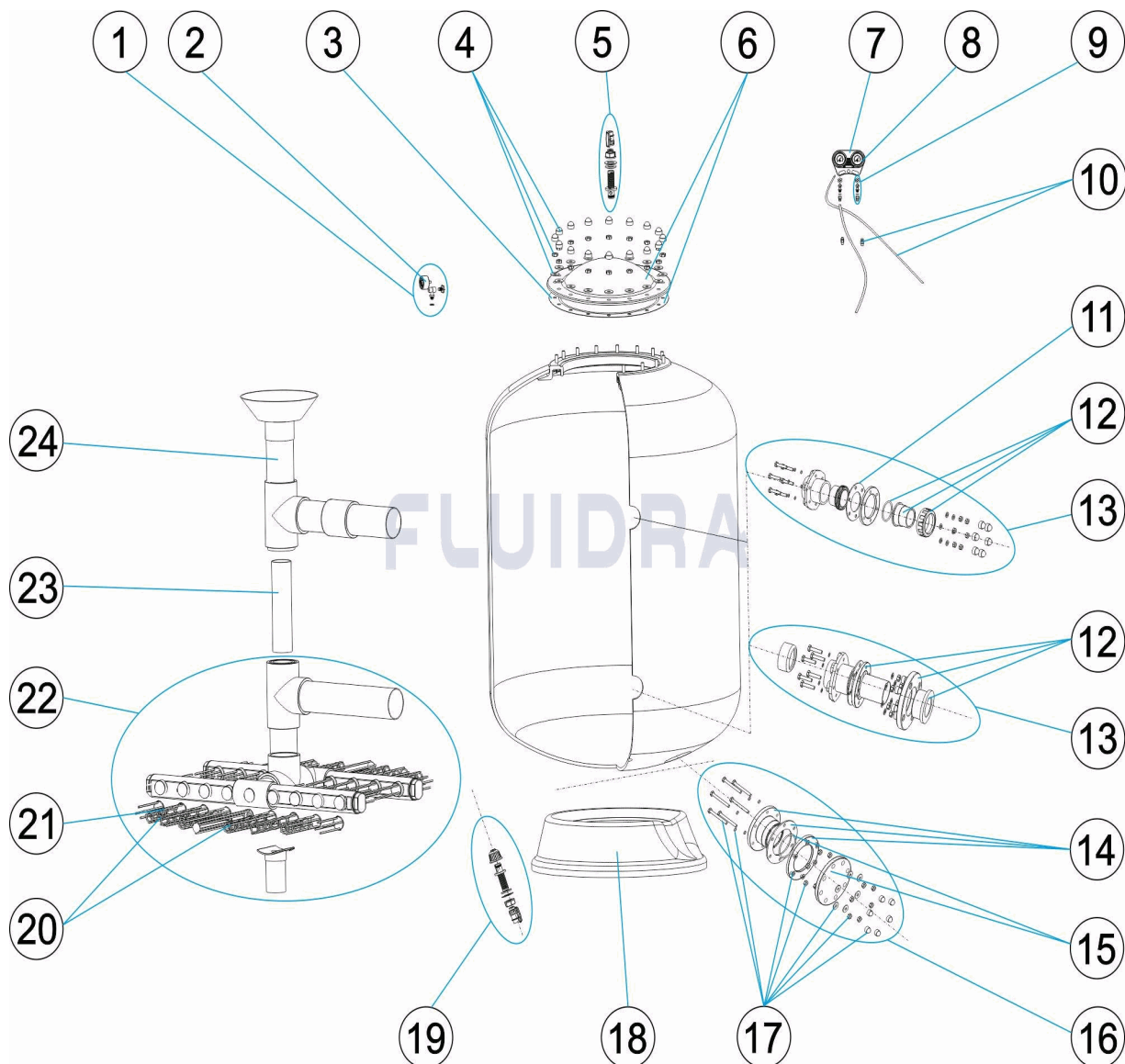
CODE **FI-VI10632510, FI-VI10752510, FI-VI10902510, FI-VI12752510,
FI-VI12902510, FI-VI14752510, FI-VI14902510, FI-VI14112510,
FI-VI16902510, FI-VI16112510, FI-VI16122510, FI-VI18902510,
FI-VI18112510, FI-VI18122510, FI-VI18142510, FI-VI20112510,
FI-VI20122510, FI-VI20142510, FI-VI20162510**

BESCHREIBUNG: FILTER VIENA 2,5 KG. D.1050-1200-1400-1600-1800-2000

23	* SP-04-0402	FÜR: FI-VI20122510
23	* SP-04-0403	FÜR: FI-VI20142510
23	* SP-04-0404	FÜR: FI-VI20162510
24	* SP-04-0405	FÜR: FI-VI10632510
24	* SP-04-0406	FÜR: FI-VI10752510
24	* SP-04-0407	FÜR: FI-VI10902510
24	* SP-04-0408	FÜR: FI-VI12752510
24	* SP-04-0409	FÜR: FI-VI12902510
24	* SP-04-0410	FÜR: FI-VI14752510
24	* SP-04-0411	FÜR: FI-VI14902510
24	* SP-04-0412	FÜR: FI-VI14112510
24	* SP-04-0413	FÜR: FI-VI16902510
24	* SP-04-0414	FÜR: FI-VI16112510
24	* SP-04-0415	FÜR: FI-VI16122510
24	* SP-04-0416	FÜR: FI-VI18902510
24	* SP-04-0417	FÜR: FI-VI18112510
24	* SP-04-0418	FÜR: FI-VI18122510
24	* SP-04-0419	FÜR: FI-VI18142510
24	* SP-04-0420	FÜR: FI-VI20112510
24	* SP-04-0421	FÜR: FI-VI20122510
24	* SP-04-0422	FÜR: FI-VI20142510
24	* SP-04-0423	FÜR: FI-VI20162510

CODIGO

**FI-VI10632510, FI-VI10752510, FI-VI10902510, FI-VI12752510,
 FI-VI12902510, FI-VI14752510, FI-VI14902510, FI-VI14112510,
 FI-VI16902510, FI-VI16112510, FI-VI16122510, FI-VI18902510,
 FI-VI18112510, FI-VI18122510, FI-VI18142510, FI-VI20112510,
 FI-VI20122510, FI-VI20142510, FI-VI20162510**

DESCRICAÇÃO: FILTRO VIENA 2,5 KG. D.1050-1200-1400-1600-1800-2000

PORTUGUES

POS	CODIGO	DESCRICAÇÃO	JANTIDADE	POS	CODIGO	DESCRICAÇÃO	JANTIDADE
1	* SP-04-0071	MANÔMETRO COMPLETO		12	* SP-04-0333	FLANGE 125 + UNIÃO	
2	* SP-04-0072	MANOMETRO 1/8" 3 KG./C "		12	* SP-04-0334	FLANGE 140 + UNIÃO	
3	SP-04-0305	JUNTA TÓRICA TAMPA		12	* SP-04-0335	FLANGE 160 PVC + UNIÃO	
4	SP-04-0323	PARAFUSOS TAMPA FILTRO		13	* SP-04-0336	CJTO. ENTRATA/SAIDA D.63-1050	
5	SP-04-0324	CONJUNTO PURDA AREIA		13	* SP-04-0337	CJTO. ENTRATA/SAIDA D.75-1050-1200	
6	SP-04-0304	TAMPA FILTRO + JUNTA		13	* SP-04-0338	CJTO. ENTRATA/SAIDA D.75-140	
7	SP-04-0325	CORPO PAINEL MANÔMETRO		13	* SP-04-0339	CJTO. ENTRATA/SAIDA D.90-1050-1200-1400	
8	* SP-04-0326	MANÔMETRO 3 ATM		13	* SP-04-0340	CJTO. ENTRATA/SAIDA D.110-1400	
9	* SP-04-0327	PURGA PAINEL MANÔMETROS		13	* SP-04-0341	CJTO. ENTRATA/SAIDA D.90-1600-1800	

CODIGO

**FI-VI10632510, FI-VI10752510, FI-VI10902510, FI-VI12752510,
 FI-VI12902510, FI-VI14752510, FI-VI14902510, FI-VI14112510,
 FI-VI16902510, FI-VI16112510, FI-VI16122510, FI-VI18902510,
 FI-VI18112510, FI-VI18122510, FI-VI18142510, FI-VI20112510,
 FI-VI20122510, FI-VI20142510, FI-VI20162510**

DESCRIÇÃO: FILTRO VIENA 2,5 KG. D.1050-1200-1400-1600-1800-2000

10	* SP-04-0328	RACORD PAINEL + TUBO	13	* SP-04-0342	CJTO. ENTRATA/SAIDA D.110-1600-1800-2000
11	* SP-04-0329	JUNTA SAÍDA D. 63 - 75	13	* SP-04-0343	CJTO. ENTRATA/SAIDA D.125-1600-1800
12	* SP-04-0278	PORCA UNIAO 3 PEÇAS D63/75	13	* SP-04-0344	CJTO. ENTRATA/SAIDA D.140
12	* SP-04-0330	FLANGE RACORD 75 + COLARINHO	13	* SP-04-0345	CJTO. ENTRATA/SAIDA D.125-2000
12	* SP-04-0331	FLANGE RACORD 90 + UNIÃO	13	* SP-04-0346	CJTO. ENTRATA/SAIDA D.140-2000
12	* SP-04-0332	FLANGE RACORD 110 + UNIÃO	13	* SP-04-0347	CJTO. ENTRATA/SAIDA D.160-2000
14	SP-04-0348	PURGA AREIA 90	22	* SP-04-0386	CJTO. COLECTOR BP.1800-110 + SUPORTE
15	SP-04-0349	FLANGE CEGA 90 + JUNTA TORICA	22	* SP-04-0387	CJTO. COLECTOR BP.1800-125 + SUPORTE
16	SP-04-0350	CONJUNTO PURDA AREIA DE FILTRO	22	* SP-04-0388	CJTO. COLECTOR BP.1600-110 + SUPORTE
17	SP-04-0351	ACESSORIOS DESCARGA AREIA D.90	22	* SP-04-0389	CJTO. COLECTOR BP.2000-110 + SUPORTE
18	* SP-04-0352	PÉ FILTRO D.1050	22	* SP-04-0390	CJTO. COLECTOR BP.2000-125 + SUPORTE
18	* SP-04-0353	PÉ FILTRO D.1200	22	* SP-04-0391	CJTO. COLECTOR BP.2000-140 + SUPORTE
18	* SP-04-0354	PÉ FILTRO D.1400	22	* SP-04-0392	CJTO. COLECTOR BP.2000-160 + SUPORTE
18	* SP-04-0355	PÉ FILTRO D.1600	23	* SP-04-0393	SUPORTE DIFUSOR FILTRO 1.400 - 110
18	* SP-04-0356	PÉ FILTRO D.1800	23	* SP-04-0394	SUPORTE DIFUSOR FILTRO 1600-90
18	* SP-04-0357	PÉ FILTRO D.2000	23	* SP-04-0395	SUPORTE DIFUSOR FILTRO 1600-110
19	SP-04-0358	PURGA ÁGUA "	23	* SP-04-0396	SUPORTE DIFUSOR FILTRO 1600-125
20	* SP-04-0359	CJTO. BRAÇO COLECTOR D.1050	23	* SP-04-0397	SUPORTE DIFUSOR FILTRO 1800-90
20	* SP-04-0360	CJTO. BRAÇO COLECTOR D.1200	23	* SP-04-0398	SUPORTE DIFUSOR FILTRO 1800-110
20	* SP-04-0361	CJTO. BRAÇO COLECTOR D.1400	23	* SP-04-0399	SUPORTE DIFUSOR FILTRO 1800-125
20	* SP-04-0362	CJTO. BRAÇO COLECTOR D.1600	23	* SP-04-0400	SUPORTE DIFUSOR FILTRO 1800-140
20	* SP-04-0363	CJTO. BRAÇO COLECTOR D.1800	23	* SP-04-0401	SUPORTE DIFUSOR FILTRO 2000-110
20	* SP-04-0364	CJTO. BRAÇO COLECTOR D.2000	23	* SP-04-0402	SUPORTE DIFUSOR FILTRO 2000-125
21	* SP-04-0365	BRAÇO COLECTOR 11/2" 90 M/M "	23	* SP-04-0403	SUPORTE DIFUSOR FILTRO 2000-140
21	* SP-04-0366	BRAÇO COLECTOR 11/2" 160 M/M "	23	* SP-04-0404	SUPORTE DIFUSOR FILTRO 2000-160
21	* SP-04-0367	BRAÇO COLECTOR 11/2" 225 M/M "	24	* SP-04-0405	CJTO. DIFUSOR BP.1050-63
21	* SP-04-0368	BRAÇO COLECTOR 11/2" 260 M/M "	24	* SP-04-0406	CJTO. DIFUSOR BP.1050-75
21	* SP-04-0369	BRAÇO COLECTOR 11/2" 325 M/M "	24	* SP-04-0407	CJTO. DIFUSOR BP.1050-90
21	* SP-04-0370	BRAÇO COLECTOR 11/2" 360 M/M "	24	* SP-04-0408	CJTO. DIFUSOR BP.1200-75
21	* SP-04-0371	BRAÇO COLECTOR 11/2" 425 M/M "	24	* SP-04-0409	CJTO. DIFUSOR BP.1200-90
21	* SP-04-0372	BRAÇO COLECTOR 11/2" 460 M/M "	24	* SP-04-0410	CJTO. DIFUSOR BP.1400-75
21	* SP-04-0373	BRAÇO COLECTOR 11/2" 525 M/M "	24	* SP-04-0411	CJTO. DIFUSOR BP.1400-90
22	* SP-04-0374	CJTO. COLECTOR BP.1050-63	24	* SP-04-0412	CJTO. DIFUSOR BP.1400-110
22	* SP-04-0375	CJTO. COLECTOR BP.1050-75	24	* SP-04-0413	CJTO. DIFUSOR BP.1600-90
22	* SP-04-0376	CJTO. COLECTOR BP.1050-90	24	* SP-04-0414	CJTO. DIFUSOR BP.1600-110
22	* SP-04-0377	CJTO. COLECTOR BP.1200-75	24	* SP-04-0415	CJTO. DIFUSOR BP.1600-125
22	* SP-04-0378	CJTO. COLECTOR BP.1200-90	24	* SP-04-0416	CJTO. DIFUSOR BP.1800-90
22	* SP-04-0379	CJTO. COLECTOR BP.1400-75	24	* SP-04-0417	CJTO. DIFUSOR BP.1800-110
22	* SP-04-0380	CJTO. COLECTOR BP.1400-90	24	* SP-04-0418	CJTO. DIFUSOR BP.1800-125
22	* SP-04-0381	CJTO. COLECTOR BP.1400-110	24	* SP-04-0419	CJTO. DIFUSOR BP.1800-140
22	* SP-04-0382	CJTO. COLECTOR BP.1600-90 + SUPORTE	24	* SP-04-0420	CJTO. DIFUSOR BP.2000-110
22	* SP-04-0383	CJTO. COLECTOR BP.1600-110 + SUPORTE	24	* SP-04-0421	CJTO. DIFUSOR BP.2000-125
22	* SP-04-0384	CJTO. COLECTOR BP.1600-125 + SUPORTE	24	* SP-04-0422	CJTO. DIFUSOR BP.2000-140
22	* SP-04-0385	CJTO. COLECTOR BP.1800-90 + SUPORTE	24	* SP-04-0423	CJTO. DIFUSOR BP.2000-160

CODIGO **FI-VI10632510, FI-VI10752510, FI-VI10902510, FI-VI12752510, FI-VI12902510, FI-VI14752510, FI-VI14902510, FI-VI14112510, FI-VI16902510, FI-VI16112510, FI-VI16122510, FI-VI18902510, FI-VI18112510, FI-VI18122510, FI-VI18142510, FI-VI20112510, FI-VI20122510, FI-VI20142510, FI-VI20162510**

DESCRIÇÃO: FILTRO VIENA 2,5 KG. D.1050-1200-1400-1600-1800-2000

OBSERVAÇÕES

POS	CODIGO	OBSERVAÇÕES
1	* SP-04-0071	PARA: FI-VI10632510
2	* SP-04-0072	PARA: FI-VI10632510
8	* SP-04-0326	PARA: FI-VI10752510, FI-VI10902510, FI-VI12752510, FI-VI12902510, FI-VI14752510, FI-VI14902510, FI-VI14112510, FI-VI16902510, FI-VI16112510, FI-VI16122510, FI-VI18902510, FI-VI18112510, FI-VI18122510, FI-VI18142510, FI-VI20112510, FI-VI20122510, FI-VI20142510, FI-VI20162510
9	* SP-04-0327	PARA: FI-VI10752510, FI-VI10902510, FI-VI12752510, FI-VI12902510, FI-VI14752510, FI-VI14902510, FI-VI14112510, FI-VI16902510, FI-VI16112510, FI-VI16122510, FI-VI18902510, FI-VI18112510, FI-VI18122510, FI-VI18142510, FI-VI20112510, FI-VI20122510, FI-VI20142510, FI-VI20162510
10	* SP-04-0328	PARA: FI-VI10752510, FI-VI10902510, FI-VI12752510, FI-VI12902510, FI-VI14752510, FI-VI14902510, FI-VI14112510, FI-VI16902510, FI-VI16112510, FI-VI16122510, FI-VI18902510, FI-VI18112510, FI-VI18122510, FI-VI18142510, FI-VI20112510, FI-VI20122510, FI-VI20142510, FI-VI20162510
11	* SP-04-0329	PARA: FI-VI10632510
12	* SP-04-0278	PARA: FI-VI10632510
12	* SP-04-0330	PARA: FI-VI10752510, FI-VI12752510, FI-VI14752510
12	* SP-04-0331	PARA: FI-VI10902510, FI-VI12902510, FI-VI14902510, FI-VI16902510, FI-VI18902510
12	* SP-04-0332	PARA: FI-VI14112510, FI-VI16112510, FI-VI18112510, FI-VI20112510
12	* SP-04-0333	PARA: FI-VI16122510, FI-VI18122510, FI-VI20122510
12	* SP-04-0334	PARA: FI-VI18142510, FI-VI20142510
12	* SP-04-0335	PARA: FI-VI20162510
13	* SP-04-0336	PARA: FI-VI10632510
13	* SP-04-0337	PARA: FI-VI10752510, FI-VI12752510
13	* SP-04-0338	PARA: FI-VI14752510
13	* SP-04-0339	PARA: FI-VI10902510, FI-VI12902510, FI-VI14902510
13	* SP-04-0340	PARA: FI-VI14112510
13	* SP-04-0341	PARA: FI-VI16902510, FI-VI18902510
13	* SP-04-0342	PARA: FI-VI16112510, FI-VI18112510, FI-VI20112510
13	* SP-04-0343	PARA: FI-VI16122510, FI-VI18122510
13	* SP-04-0344	PARA: FI-VI18142510
13	* SP-04-0345	PARA: FI-VI20122510
13	* SP-04-0346	PARA: FI-VI20142510
13	* SP-04-0347	PARA: FI-VI20162510
18	* SP-04-0352	PARA: FI-VI10632510, FI-VI10752510, FI-VI10902510
18	* SP-04-0353	PARA: FI-VI12752510, FI-VI12902510
18	* SP-04-0354	PARA: FI-VI14752510, FI-VI14902510, FI-VI14112510
18	* SP-04-0355	PARA: FI-VI16902510, FI-VI16112510, FI-VI16122510
18	* SP-04-0356	PARA: FI-VI18902510, FI-VI18112510, FI-VI18122510, FI-VI18142510
18	* SP-04-0357	PARA: FI-VI20112510, FI-VI20122510, FI-VI20142510, FI-VI20162510
20	* SP-04-0359	PARA: FI-VI10632510, FI-VI10752510, FI-VI10902510
20	* SP-04-0360	PARA: FI-VI12752510, FI-VI12902510
20	* SP-04-0361	PARA: FI-VI14752510, FI-VI14902510, FI-VI14112510
20	* SP-04-0362	PARA: FI-VI16902510, FI-VI16112510, FI-VI16122510
20	* SP-04-0363	PARA: FI-VI18902510, FI-VI18112510, FI-VI18122510, FI-VI18142510
20	* SP-04-0364	PARA: FI-VI20112510, FI-VI20122510, FI-VI20142510, FI-VI20162510

CODIGO **FI-VI10632510, FI-VI10752510, FI-VI10902510, FI-VI12752510, FI-VI12902510, FI-VI14752510, FI-VI14902510, FI-VI14112510, FI-VI16902510, FI-VI16112510, FI-VI16122510, FI-VI18902510, FI-VI18112510, FI-VI18122510, FI-VI18142510, FI-VI20112510, FI-VI20122510, FI-VI20142510, FI-VI20162510**

DESCRICAÇÃO: FILTRO VIENA 2,5 KG. D.1050-1200-1400-1600-1800-2000

21	* SP-04-0365	PARA: FI-VI16902510 [2UT], FI-VI16112510 [2UT], FI-VI16122510 [2UT], FI-VI18902510 [2UT], FI-VI18112510 [2UT], FI-VI18122510 [2UT], FI-VI18142510 [2UT], FI-VI20112510 [2UT], FI-VI20122510 [2UT], FI-VI20142510 [2UT], FI-VI20162510 [2UT]
21	* SP-04-0366	PARA: FI-VI18902510 [2UT], FI-VI18112510 [2UT], FI-VI18122510 [2UT], FI-VI18142510 [2UT]
21	* SP-04-0367	PARA: FI-VI14752510 [2UT], FI-VI14902510 [2UT], FI-VI14112510 [2UT], FI-VI16902510 [2UT], FI-VI16112510 [2UT], FI-VI16122510 [2UT]
21	* SP-04-0368	PARA: FI-VI14752510 [2UT], FI-VI14902510 [2UT], FI-VI14112510 [2UT], FI-VI16902510 [2UT], FI-VI16112510 [2UT], FI-VI16122510
21	* SP-04-0369	PARA: FI-VI10632510 [2UT], FI-VI10752510 [2UT], FI-VI10902510 [2UT], FI-VI14752510 [2UT], FI-VI14902510 [2UT], FI-VI14112510 [2UT], FI-VI16902510 [3UT], FI-VI16112510 [3UT], FI-VI16122510 [3UT]
21	* SP-04-0370	PARA: FI-VI10632510 [3UT], FI-VI10752510 [3UT], FI-VI10902510 [3UT], FI-VI12752510 [2UT], FI-VI12902510 [2UT], FI-VI18902510 [2UT], FI-VI18112510 [2UT], FI-VI18122510 [2UT], FI-VI18142510 [2UT], FI-VI20112510 [2UT], FI-VI20122510 [2UT], FI-VI20142510 [2UT], FI-VI20162510 [2UT]
21	* SP-04-0371	PARA: FI-VI12752510 [3UT], FI-VI12902510 [3UT], FI-VI18902510 [2UT], FI-VI18112510 [2UT], FI-VI18122510 [2UT], FI-VI18142510 [2UT], FI-VI20112510 [2UT], FI-VI20122510 [2UT], FI-VI20142510 [2UT], FI-VI20162510 [2UT]
21	* SP-04-0372	PARA: FI-VI14752510 [2UT], FI-VI14902510 [2UT], FI-VI14112510 [2UT], FI-VI18902510 [3UT], FI-VI18112510 [3UT], FI-VI18122510 [3UT], FI-VI18142510 [3UT], FI-VI20112510 [3UT], FI-VI20122510 [3UT], FI-VI20142510 [3UT], FI-VI20162510 [3UT]
21	* SP-04-0373	PARA: FI-VI14752510 [3UT], FI-VI14902510 [3UT], FI-VI14112510 [3UT]
22	* SP-04-0374	PARA: FI-VI10632510
22	* SP-04-0375	PARA: FI-VI10752510
22	* SP-04-0376	PARA: FI-VI10902510
22	* SP-04-0377	PARA: FI-VI12752510
22	* SP-04-0378	PARA: FI-VI12902510
22	* SP-04-0379	PARA: FI-VI14752510
22	* SP-04-0380	PARA: FI-VI14902510
22	* SP-04-0381	PARA: FI-VI14112510
22	* SP-04-0382	PARA: FI-VI16902510
22	* SP-04-0383	PARA: FI-VI16112510
22	* SP-04-0384	PARA: FI-VI16122510
22	* SP-04-0385	PARA: FI-VI18902510
22	* SP-04-0386	PARA: FI-VI18112510
22	* SP-04-0387	PARA: FI-VI18122510
22	* SP-04-0388	PARA: FI-VI18142510
22	* SP-04-0389	PARA: FI-VI20112510
22	* SP-04-0390	PARA: FI-VI20122510
22	* SP-04-0391	PARA: FI-VI20142510
22	* SP-04-0392	PARA: FI-VI20162510
23	* SP-04-0393	PARA: FI-VI14112510
23	* SP-04-0394	PARA: FI-VI16902510
23	* SP-04-0395	PARA: FI-VI16112510
23	* SP-04-0396	PARA: FI-VI16122510
23	* SP-04-0397	PARA: FI-VI18902510
23	* SP-04-0398	PARA: FI-VI18112510
23	* SP-04-0399	PARA: FI-VI18122510
23	* SP-04-0400	PARA: FI-VI18142510
23	* SP-04-0401	PARA: FI-VI20112510



ITEM

REV.: 0

9154

DATA: 02/06/2022

FOLHA: 5/5

CODIGO

FI-VI10632510, FI-VI10752510, FI-VI10902510, FI-VI12752510,
FI-VI12902510, FI-VI14752510, FI-VI14902510, FI-VI14112510,
FI-VI16902510, FI-VI16112510, FI-VI16122510, FI-VI18902510,
FI-VI18112510, FI-VI18122510, FI-VI18142510, FI-VI20112510,
FI-VI20122510, FI-VI20142510, FI-VI20162510

DESCRICAÇÃO: FILTRO VIENA 2,5 KG. D.1050-1200-1400-1600-1800-2000

23	* SP-04-0402	PARA: FI-VI20122510
23	* SP-04-0403	PARA: FI-VI20142510
23	* SP-04-0404	PARA: FI-VI20162510
24	* SP-04-0405	PARA: FI-VI10632510
24	* SP-04-0406	PARA: FI-VI10752510
24	* SP-04-0407	PARA: FI-VI10902510
24	* SP-04-0408	PARA: FI-VI12752510
24	* SP-04-0409	PARA: FI-VI12902510
24	* SP-04-0410	PARA: FI-VI14752510
24	* SP-04-0411	PARA: FI-VI14902510
24	* SP-04-0412	PARA: FI-VI14112510
24	* SP-04-0413	PARA: FI-VI16902510
24	* SP-04-0414	PARA: FI-VI16112510
24	* SP-04-0415	PARA: FI-VI16122510
24	* SP-04-0416	PARA: FI-VI18902510
24	* SP-04-0417	PARA: FI-VI18112510
24	* SP-04-0418	PARA: FI-VI18122510
24	* SP-04-0419	PARA: FI-VI18142510
24	* SP-04-0420	PARA: FI-VI20112510
24	* SP-04-0421	PARA: FI-VI20122510
24	* SP-04-0422	PARA: FI-VI20142510
24	* SP-04-0423	PARA: FI-VI20162510