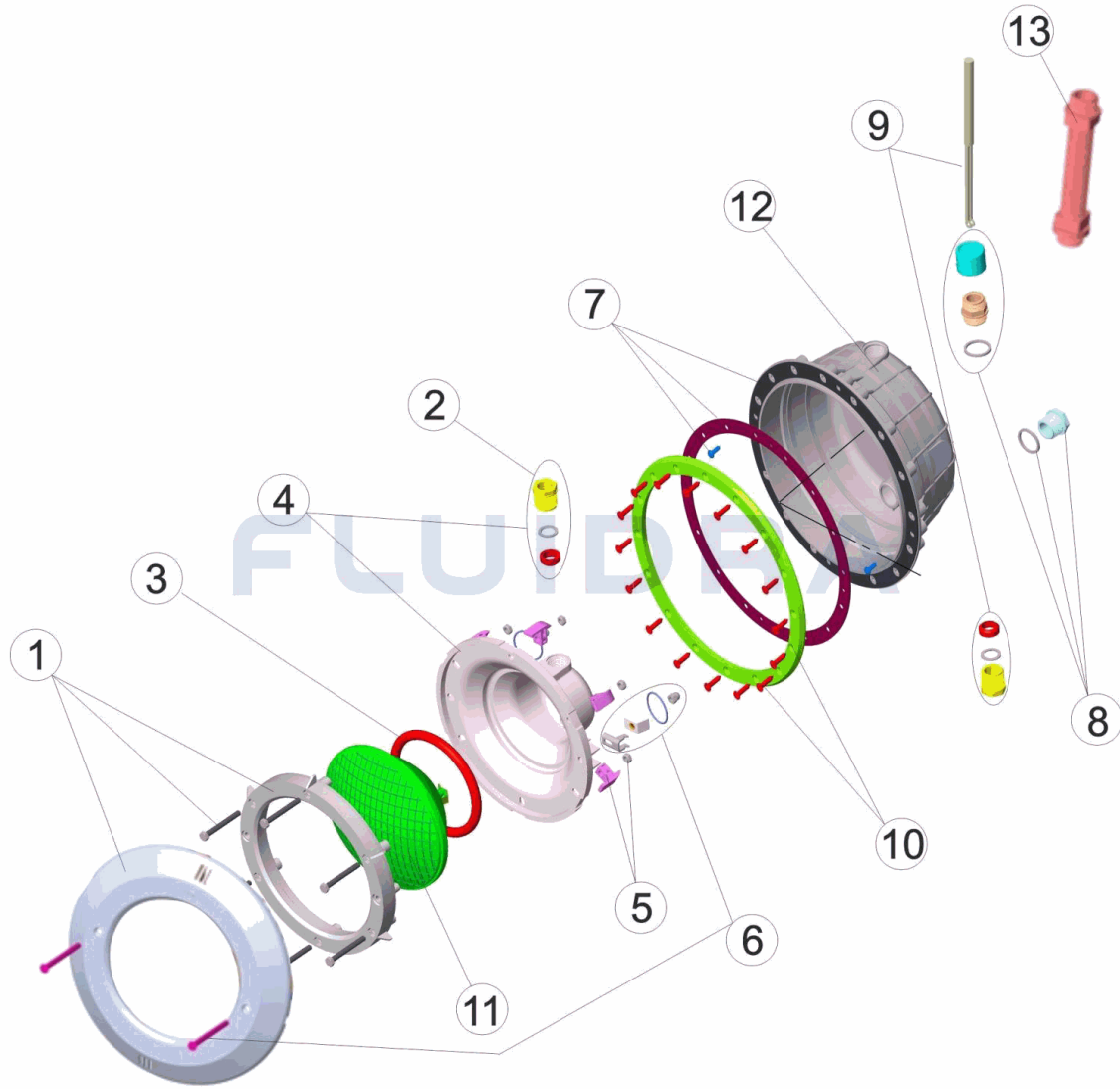


CODIGO **07667**

DESCRIPCION: **PROYECTOR STD.NICHO PP. EMB. BLANCO / CABLE / PASACABLE**

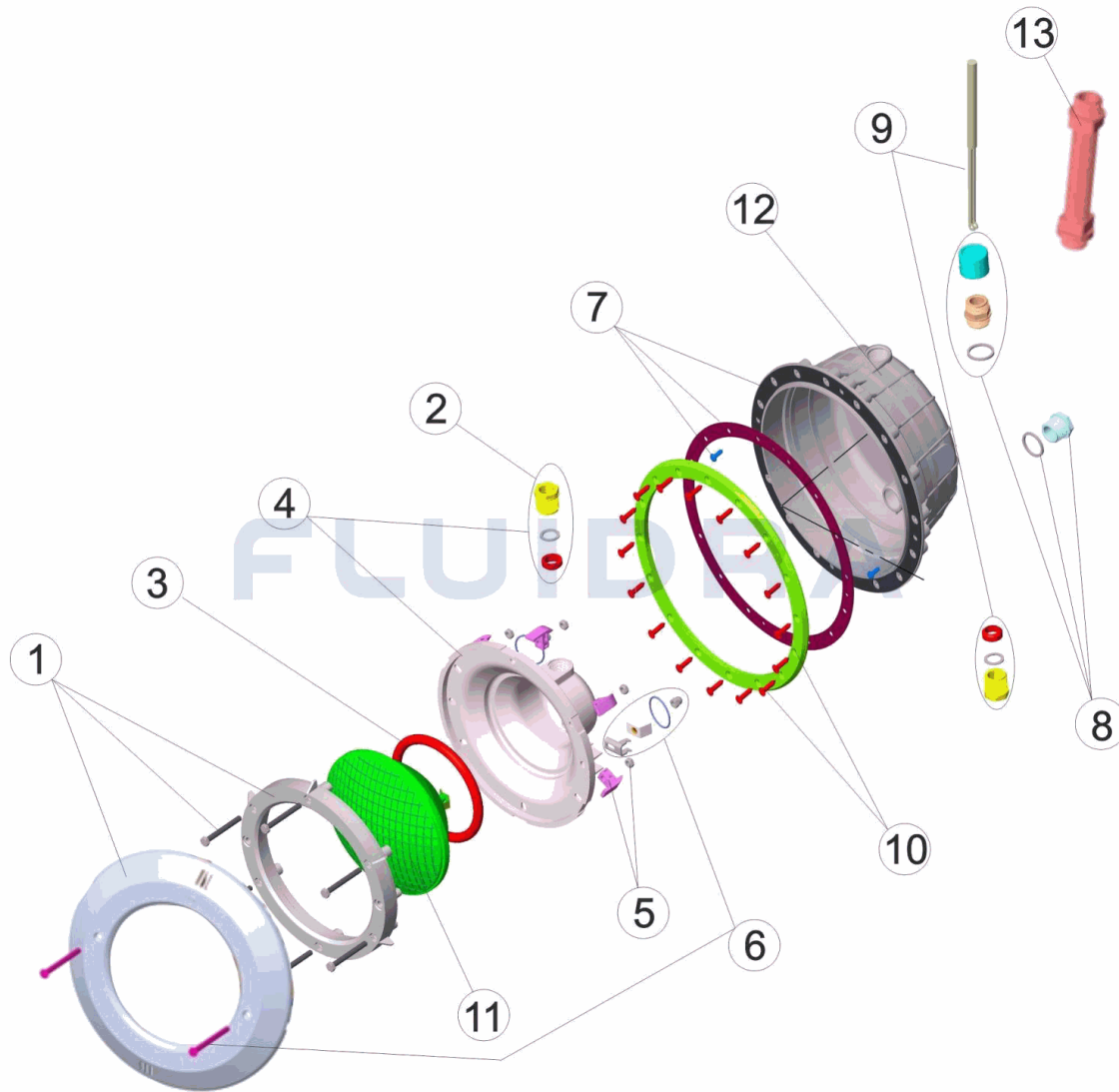


**ESPAÑOL**

| POS | CODIGO     | DESCRIPCION                            | CANTIDAD | POS | CODIGO     | DESCRIPCION                    | CANTIDAD |
|-----|------------|--|----------|-----|------------|--------------------------------|----------|
| 1   | 4403010302 | ARO BLANCO PROYECTOR                   |          | 8   | 4403010313 | PRENSAESTOPAS CUERPO PROYECTOR |          |
| 2   | 4403010312 | PRENSAESTOPAS FOCO PROYECTOR M-25      |          | 9   | 4403010314 | CABLE PROYECTOR M-25 HALOGENO  |          |
| 3   | 4403010304 | JUNTA TORICA PROYECTOR                 |          | 10  | 4402050023 | BRIDA FIJACION ANCHA PROY.STD. |          |
| 4   | 4403010305 | FONDO FOCO PROYECTOR HALOGENO          |          | 11  | 00370IP112 | LAMPARA 300W 12V.              |          |
| 5   | 4403010306 | CLIP FIJACION PROYECTOR                |          | 12  | 07667R0100 | NICHO PROYECTOR                |          |
| 6   | 4403015002 | CJTO. FIJACION PROYECTOR JELLY STD. A; |          | 13  | 4403010059 | MANGUERA PASACABLES M-25 3/4"  |          |
| 7   | 4403013507 | JUNTA ADHESIVA PROYECTOR               |          |     |            |                                |          |

CODE 07667

DESCRIPTION: PROJECTEUR PLAT PISCINE PRÉFABRIQUÉE

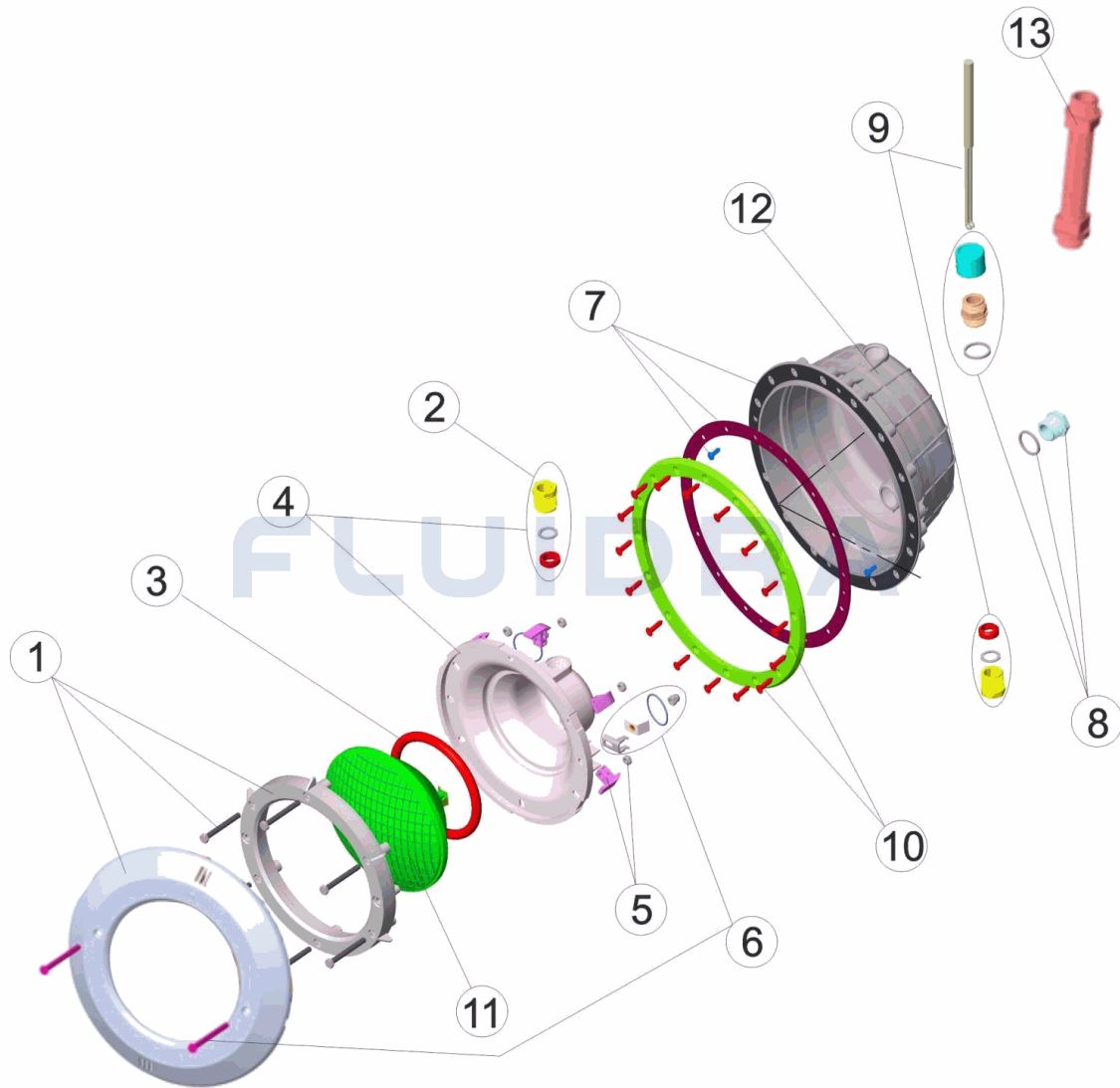


FRANCAIS

| POS | CODE       | DESCRIPTION                          | QUANTITE | POS | CODE       | DESCRIPTION              | QUANTITE |
|-----|------------|--------------------------------------|----------|-----|------------|--------------------------|----------|
| 1   | 4403010302 | ENJOLIVEUR BLANC DE PROJECTEUR       |          | 8   | 4403010313 | CORPS PRESSE ETOUPE M-25 |          |
| 2   | 4403010312 | PRESSE ETOUPE PROJECTEUR M-25        |          | 9   | 4403010314 | CABLE PROJECTEUR M-25    |          |
| 3   | 4403010304 | JOINT TORIQUE PROJECTEUR             |          | 10  | 4402050023 | BRIDE FIXATION           |          |
| 4   | 4403010305 | NICHE D'AMPOULE DE PROJECTEUR        |          | 11  | 00370IP112 | LAMPE                    |          |
| 5   | 4403010306 | CLIP FIXATION PROJECTEUR             |          | 12  | 07667R0100 | NICHE PROJECTEUR         |          |
| 6   | 4403015002 | ENSEMBLE FIXATION PROJECTEUR JELLY € |          | 13  | 4403010059 | TUYAU ANNEAU M-25        |          |
| 7   | 4403013507 | JOINT ADHESIF PROJECTEUR             |          |     |            |                          |          |

CODE **07667**

DESCRIPTION: **FLAT LIGHT PREFABRICATED POOL**

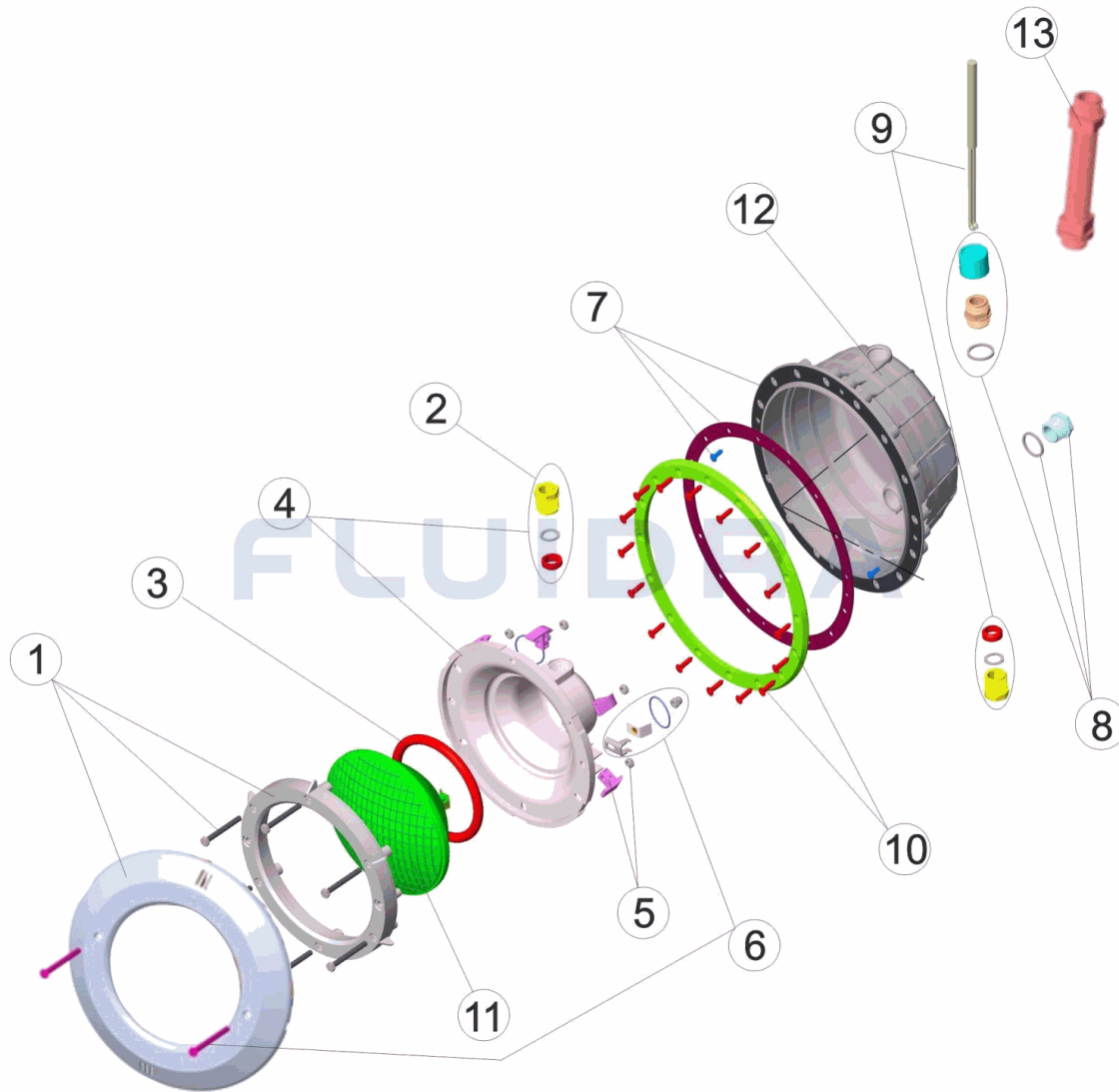


**ENGLISH**

| POS | CODE       | DESCRIPTION                           | QUANTITY | POS | CODE       | DESCRIPTION             | QUANTITY |
|-----|------------|---------------------------------------|----------|-----|------------|-------------------------|----------|
| 1   | 4403010302 | WHITE FACEPLATE                       |          | 8   | 4403010313 | BODY PACKING GLAND M-25 |          |
| 2   | 4403010312 | PACKING GLAND M-25                    |          | 9   | 4403010314 | LIGHT CABLE M-25        |          |
| 3   | 4403010304 | LIGHT O RING                          |          | 10  | 4402050023 | FIXING FLANGE           |          |
| 4   | 4403010305 | BACK COVER                            |          | 11  | 00370IP112 | LIGHTBULB               |          |
| 5   | 4403010306 | LIGHT FIXING CLIP                     |          | 12  | 07667R0100 | FLOODLAMP HOUSING       |          |
| 6   | 4403015002 | FIXING SET UNDERWATER LIGHT JELLY STI |          | 13  | 4403010059 | HOSE CONDUIT M-25       |          |
| 7   | 4403013507 | LIGHT ADHESIVE GASKET                 |          |     |            |                         |          |

CODICE **07667**

DESCRIZIONE: **PROIETTORE PIANO PISCINA PREFABBRICATA**

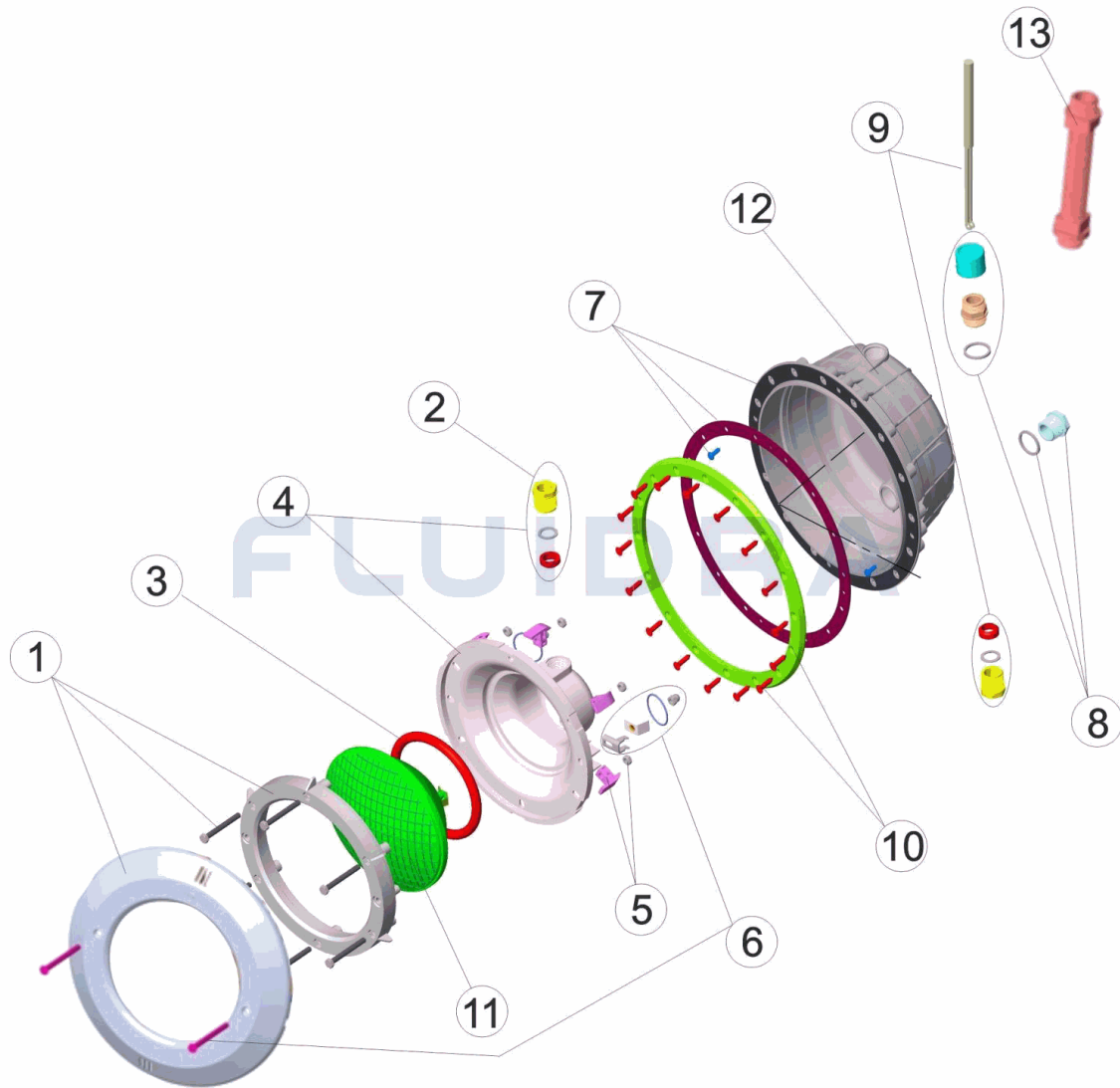


**ITALIANO**

| POS | CODICE     | DESCRIZIONE                            | QUANTITA' | POS | CODICE     | DESCRIZIONE           | QUANTITA' |
|-----|------------|--|-----------|-----|------------|-----------------------|-----------|
| 1   | 4403010302 | FLANGIA BIANCA FARO                    |           | 8   | 4403010313 | PRESSACAVI CORPO M-25 |           |
| 2   | 4403010312 | PRESSACAVI M-25                        |           | 9   | 4403010314 | CABLE PROJECTEUR M-25 |           |
| 3   | 4403010304 | O-RING FARO                            |           | 10  | 4402050023 | FLANGIA FISSAGGIO     |           |
| 4   | 4403010305 | COPPA FARO                             |           | 11  | 00370IP112 | LAMPADINA             |           |
| 5   | 4403010306 | CLIP FISSAGGIO FARO                    |           | 12  | 07667R0100 | NICCHIA PROIETTORE    |           |
| 6   | 4403015002 | KIT FISSAGGIO PROIETTORE JELLY STD. A2 |           | 13  | 4403010059 | TUBO PASSACAVO M-25   |           |
| 7   | 4403013507 | GUARNIZIONE ADESIVA FARO               |           |     |            |                       |           |

CODE **07667**

BESCHREIBUNG: **UWS STD.EINBAUTOPF PP. BLENDE WEISS / KABEL / KABELDURCHFÜHRUN**

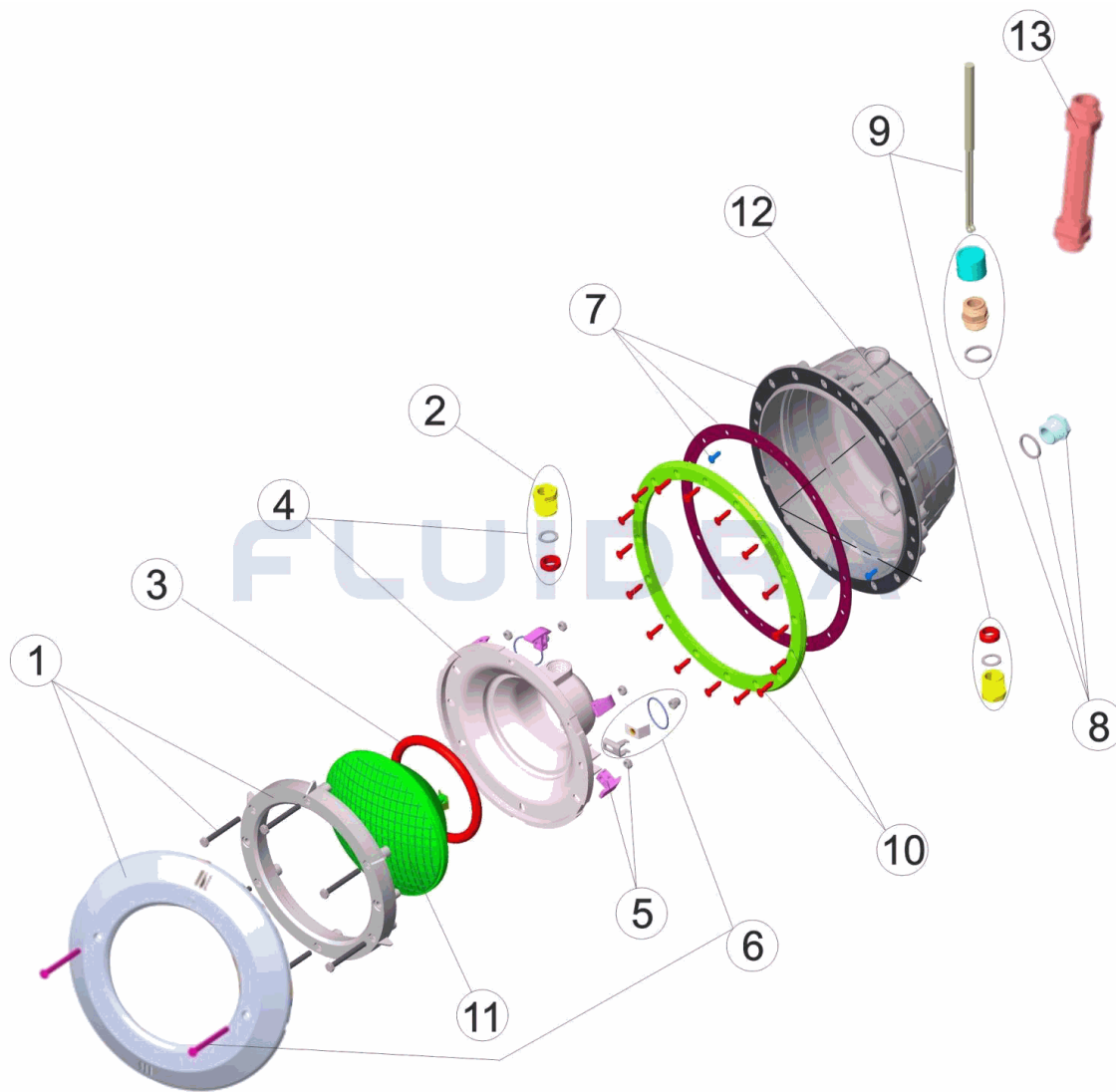


**DEUTSCH**

| POS | CODE       | BESCHREIBUNG                     | MENGE | POS | CODE       | BESCHREIBUNG                      | MENGE |
|-----|------------|----------------------------------|-------|-----|------------|-----------------------------------|-------|
| 1   | 4403010302 | RING WEISS UWS                   |       | 8   | 4403010313 | QUETSCHVERSCHRAUBUNG GEHÄUSE U    |       |
| 2   | 4403010312 | QUETSCHVERSCHRAUBUNG LAMPE UWS M |       | 9   | 4403010314 | UWS-KABEL M-25 HALOGEN            |       |
| 3   | 4403010304 | O-RING UWS                       |       | 10  | 4402050023 | BEFESTIGUNGSFLANSCH BREIT UWS STL |       |
| 4   | 4403010305 | BASIS UWS HALOGEN                |       | 11  | 00370IP112 | LAMPE PAR 56 12 V 300 W           |       |
| 5   | 4403010306 | FIXIERCLIP UWS                   |       | 12  | 07667R0100 | EINBAUTOPF UWS                    |       |
| 6   | 4403015002 | FIXIERSET UWS JELLY STD. A2      |       | 13  | 4403010059 | SCHLAUCH KABELDURCHFÜHRUNG M-25   |       |
| 7   | 4403013507 | DICHTUNG SELBSTKLEBEND UWS       |       |     |            |                                   |       |

CODIGO **07667**

DESCRIÇÃO: **PROJECTOR PLANO PISCINA PRÉ-FABRICADA**



**PORTUGUES**

| POS | CODIGO     | DESCRIÇÃO                           | QUANTIDADE | POS | CODIGO     | DESCRIÇÃO             | QUANTIDADE |
|-----|------------|-------------------------------------|------------|-----|------------|-----------------------|------------|
| 1   | 4403010302 | ARO BRANCO PROJECTOR                |            | 8   | 4403010313 | BUCIN CORPO M-25      |            |
| 2   | 4403010312 | BUCIN FOCO M-25                     |            | 9   | 4403010314 | CABO PROJECTOR M-25   |            |
| 3   | 4403010304 | JUNTA TÓRICA PROJECTOR              |            | 10  | 4402050023 | FLANGE DE FIXAÇÃO     |            |
| 4   | 4403010305 | FUNDO FOCO PROJECTOR                |            | 11  | 00370IP112 | BOMBILHA              |            |
| 5   | 4403010306 | CLIP FIXAÇÃO PROJECTOR              |            | 12  | 07667R0100 | NICHO PROJECTOR       |            |
| 6   | 4403015002 | CÓNJUNTO FIXAÇÃO PROJECTOR JELLY ST |            | 13  | 4403010059 | MANGUEIRA ANILHA M-25 |            |
| 7   | 4403013507 | JUNTA ADESIVA PROJECTOR             |            |     |            |                       |            |