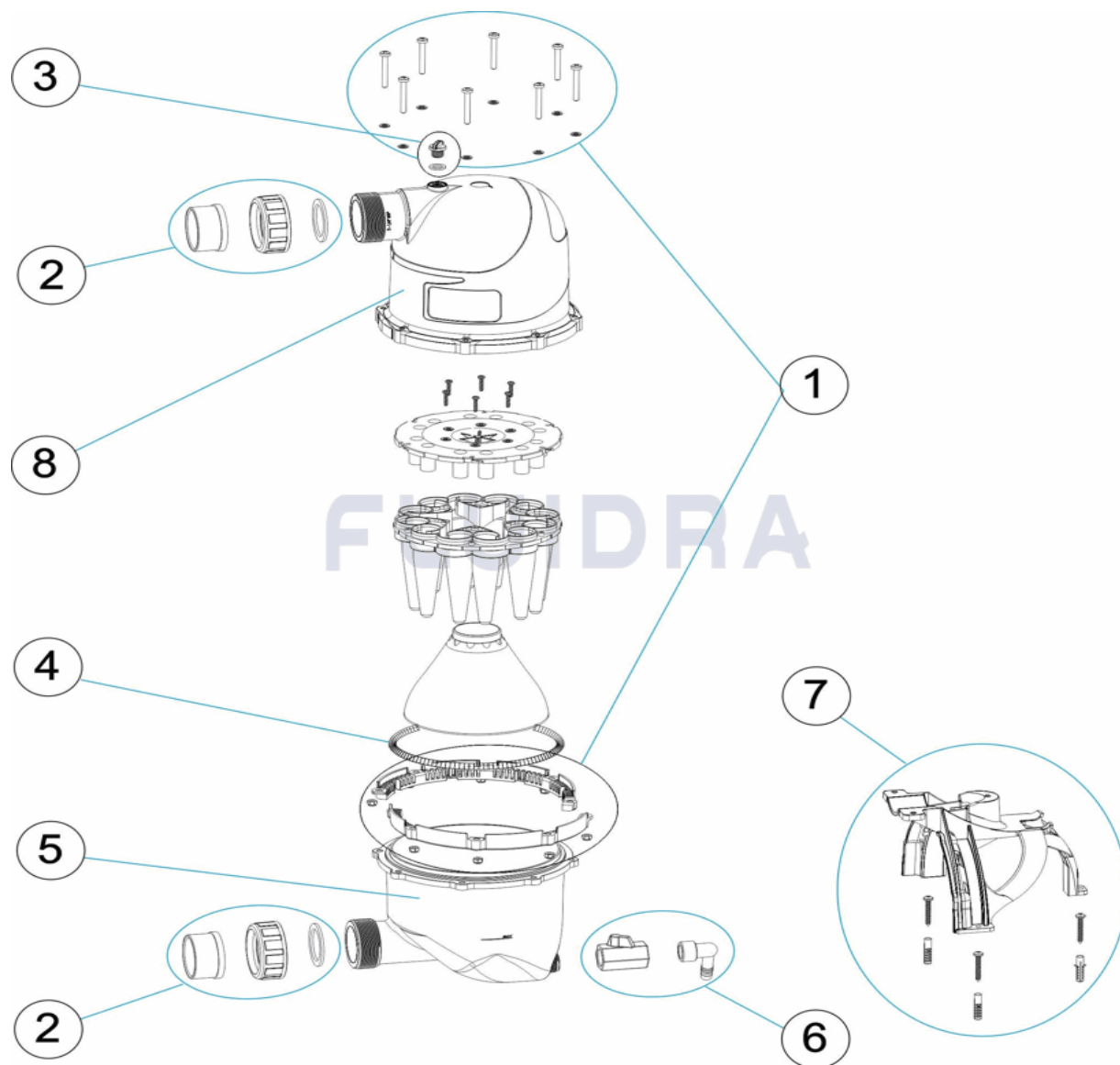


CODIGO 53743, 54185

DESCRIPCION: HIDROSPIN COMPACT - (MI)



ESPAÑOL

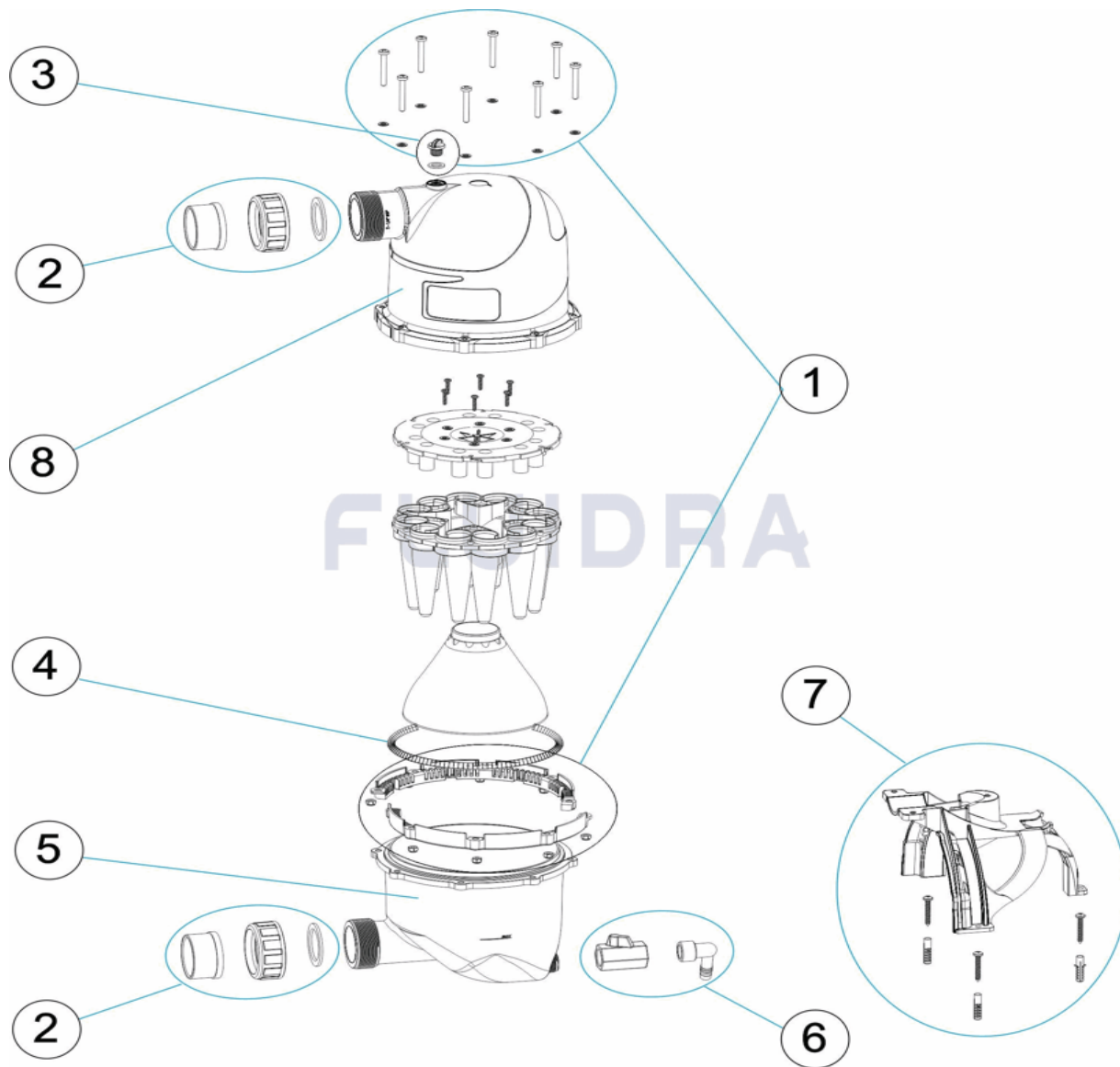
POS	CODIGO	DESCRIPCION	CANTIDAD	POS	CODIGO	DESCRIPCION	CANTIDAD
1	4404200000	ANILLO REFUERZO PARTIDO	5	4404200004	DEPOSITO HIDROSPIN COMPACT		
2	* 4404200001	CJTO. MANGUITO UNION ENCOLAR D. 50	6	4404200005	CJTO VALVULA DESAGUE		
2	* 4404200002	CJTO MANGUITO UNION ENCOLAR 1 1/2"	7	4404200006	SOPORTE HIDROSPIN		
3	4408031604	TAPON CON JUNTA	8	* 53743R0004	TAPA SALIDA HYDROSPIN		
4	4404200003	JUNTA TORICA 192X5	8	* 54185R0004	TAPA SALIDA HYDROSPIN (MI)		

CODIGO **53743, 54185**DESCRIPCION: **HIDROSPIN COMPACT - (MI)****OBSERVACIONES**

POS	CODIGO	OBSERVACIONES
2	* 4404200001	PARA: 54185
2	* 4404200002	PARA: 53743
8	* 53743R0004	PARA: 53743
8	* 54185R0004	PARA: 54185

CODE 53743, 54185

DESCRIPTION: HYDROSPIN COMPACT - (MA)



FRANCAIS

POS	CODE	DESCRIPTION	QUANTITE	POS	CODE	DESCRIPTION	QUANTITE
1	440420000	ANNEAU RENFORT COUPÉ		5	440420004	RÉSERVOIR HIDROSPIN COMPACT	
2	* 440420001	ENS. FLEXIBLE RACCORD À COLLER D.50		6	440420005	ENS. VANNE ÉCOULEMENT	
2	* 440420002	ENS. FLEXIBLE RACCORD À COLLER 11/2"		7	440420006	SUPPORT HYDROSPIN	
3	4408031604	BOUCHON SKIMMER AVEC JOINT		8	* 53743R0004	COUVERCLE SORTIE HYDROSPIN	
4	440420003	JOINT TORIQUE 192X5		8	* 54185R0004	COUVERCLE SORTIE HYDROSPIN (MA)	

CODE **53743, 54185**

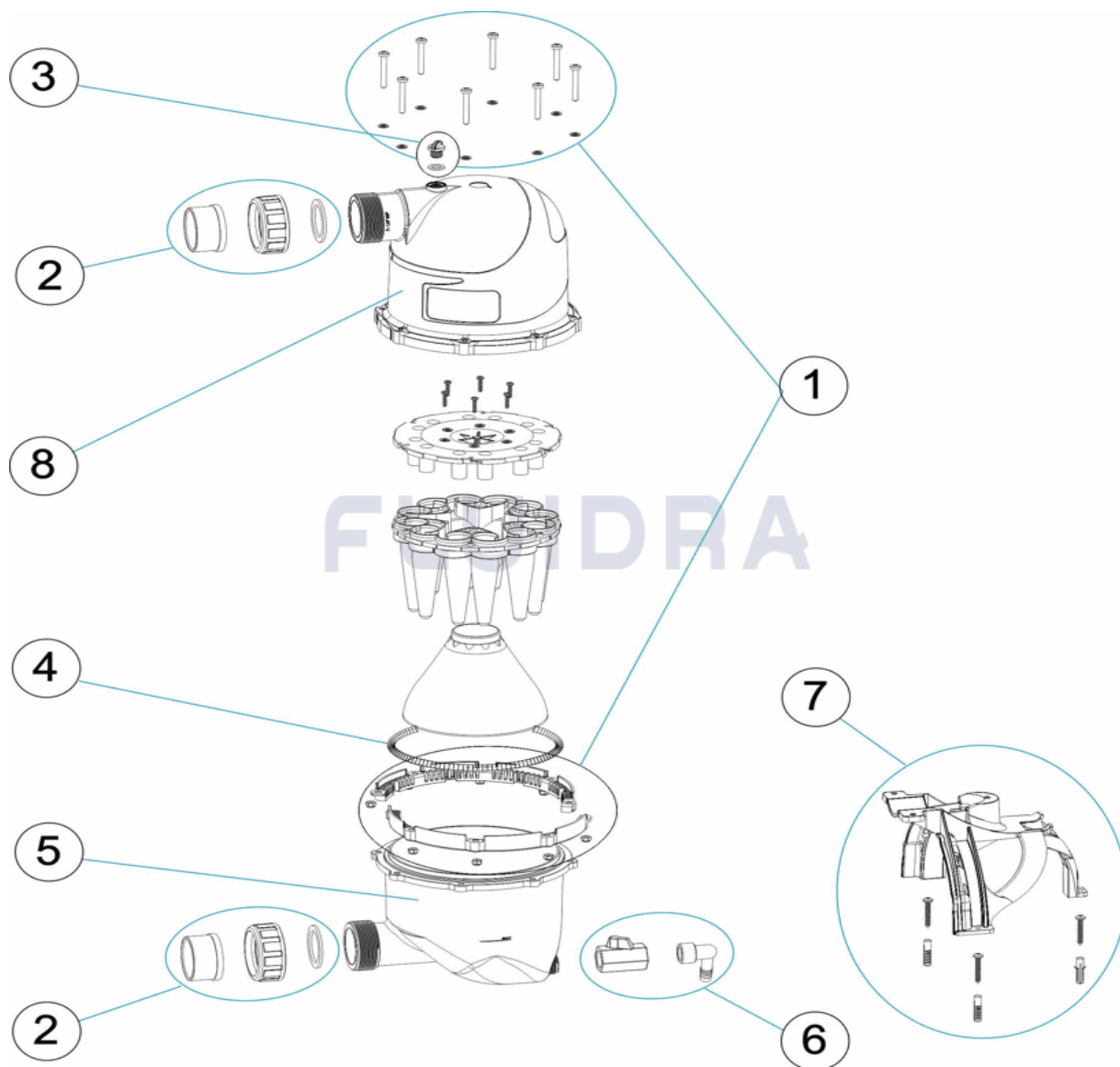
DESCRIPTION: **HYDROSPIN COMPACT - (MA)**

OBSERVATIONS

POS	CODE	OBSERVATIONS
2	* 4404200001	POUR: 54185
2	* 4404200002	POUR: 53743
8	* 53743R0004	POUR: 53743
8	* 54185R0004	POUR: 54185

CODE 53743, 54185

DESCRIPTION: HYDROSPIN COMPACT (ENGL. MEASUREMENTS)



ENGLISH

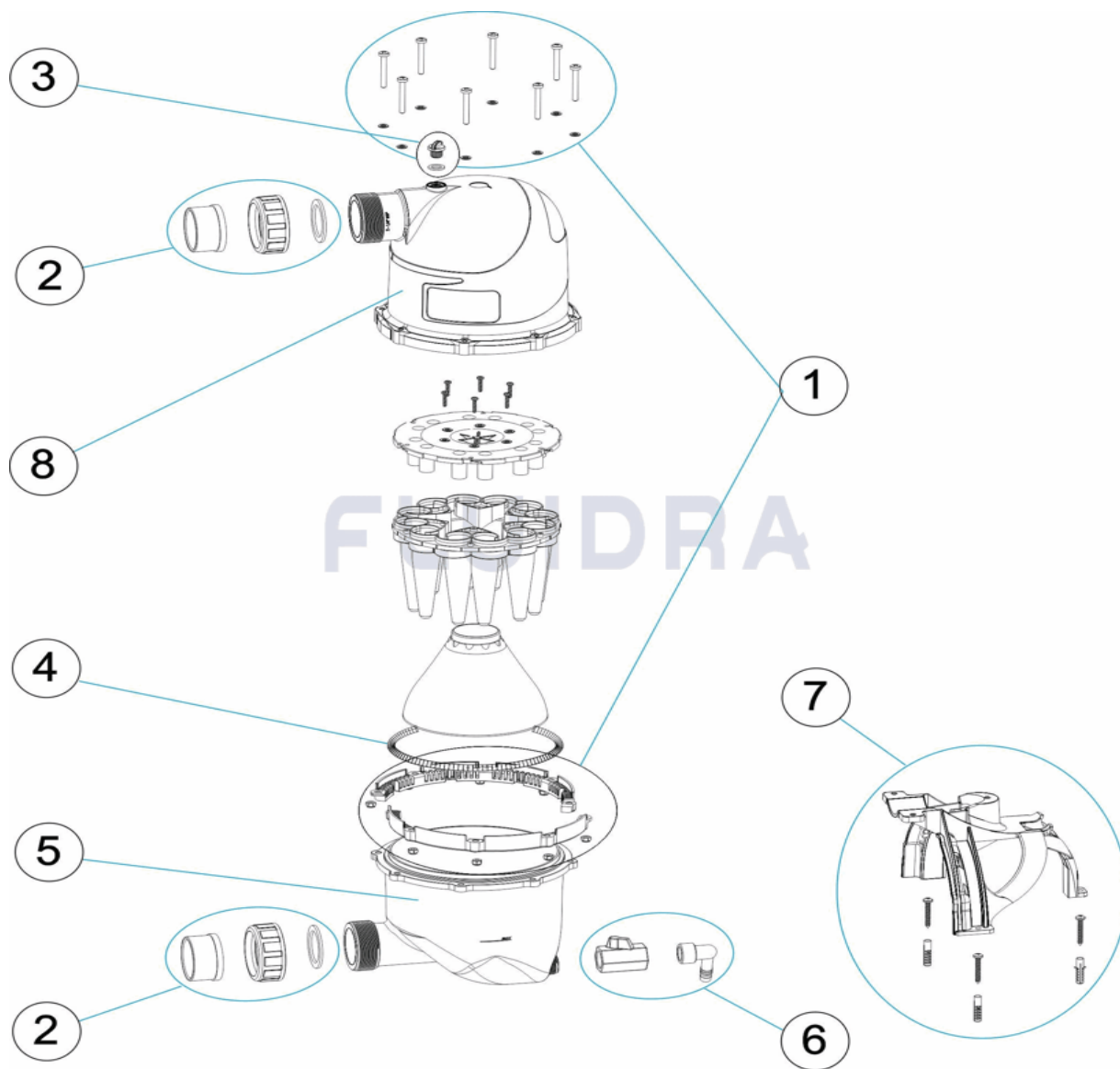
POS	CODE	DESCRIPTION	QUANTITY	POS	CODE	DESCRIPTION	QUANTITY
1	440420000	SPLIT REINFORCING RING		5	440420004	HIDROSPIN COMPACT TANK	
2	* 440420001	D. 50 CONNECTOR SLEEVE FOR GLUEING		6	440420005	DRAIN VALVE UNIT	
2	* 440420002	1 1/2" CONNECTOR SLEEVE FOR GLUEIN		7	440420006	HYDROSPIN SUPPORT	
3	4408031604	BLANKING PLUG AND 'O' RING		8	* 53743R0004	HYDROSPIN OUTLET CAP	
4	440420003	192X5 O'RING		8	* 54185R0004	HYDROSPIN OUTLET CAP (ENGL. MEASUR	

CODE **53743, 54185**DESCRIPTION: **HYDROSPIN COMPACT (ENGL. MEASUREMENTS)****OBSERVATIONS**

POS	CODE	OBSERVATIONS
2	* 4404200001	FOR: 54185
2	* 4404200002	FOR: 53743
8	* 53743R0004	FOR: 53743
8	* 54185R0004	FOR: 54185

CODICE 53743, 54185

DESCRIZIONE: HYDROSPIN COMPACT (MEDIA INGLESE)



ITALIANO

POS	CODICE	DESCRIZIONE	QUANTITA'	POS	CODICE	DESCRIZIONE	QUANTITA'
1	4404200000	ANELLO RINFORZO DIVISO		5	4404200004	SERBATOIO HIDROSPIN COMPACT	
2	* 4404200001	COMPLESSO MANICOTTO UNIONE INCOLI		6	4404200005	COMPLESSO VALVOLA SCARICO	
2	* 4404200002	COMPLESSO MANICOTTO UNIONE INCOLI		7	4404200006	SUPPORTO HYDROSPIN	
3	4408031604	TAPPO CON GUARNIZIONE		8	* 53743R0004	COPERCHIO USCITA HYDROSPIN	
4	4404200003	O-RING 192X5		8	* 54185R0004	COPERCHIO USCITA IDROSPIN (MEDIA INC	

CODICE 53743, 54185

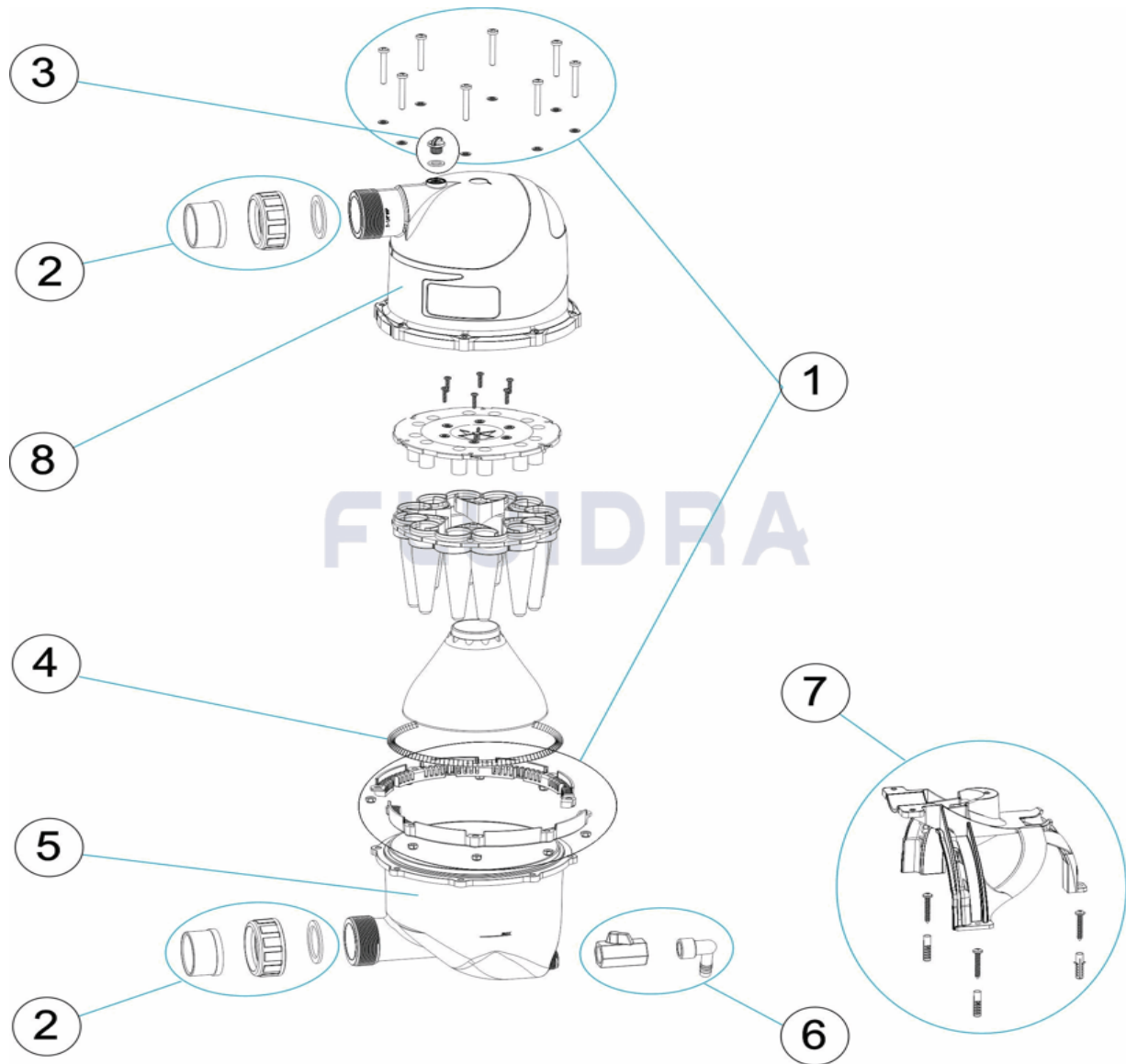
DESCRIZIONE: HYDROSPIN COMPACT (MEDIA INGLESE)

OSSERVAZIONI

POS	CODICE	OSSERVAZIONI
2	* 4404200001	PER: 54185
2	* 4404200002	PER: 53743
8	* 53743R0004	PER: 53743
8	* 54185R0004	PER: 54185

CODE 53743, 54185

BESCHREIBUNG: HIDROSPIN COMPACT - (MI)



DEUTSCH

POS	CODE	BESCHREIBUNG	MENGE	POS	CODE	BESCHREIBUNG	MENGE
1	440420000	GETEILTER VERSTÄRKUNGSRING	5	440420004	BEHÄLTER HIDROSPIN COMPACT		
2	* 440420001	SET NIPPEL VERBINDUNG ZUM KLEBEN D	6	440420005	SET VENTIL ABFLUSS		
2	* 440420002	SET NIPPEL VERBINDUNG ZUM KLEBEN 1	7	440420006	HALTERUNG HIDROSPIN		
3	4408031604	STOPFEN UND DICHUNG	8	* 53743R0004	ABDECKUNG AUSGANG HYDROSPIN		
4	440420003	O-RING 192 X 5	8	* 54185R0004	ABDECKUNG AUSGANG HYDROSPIN (MI)		

CODE **53743, 54185**

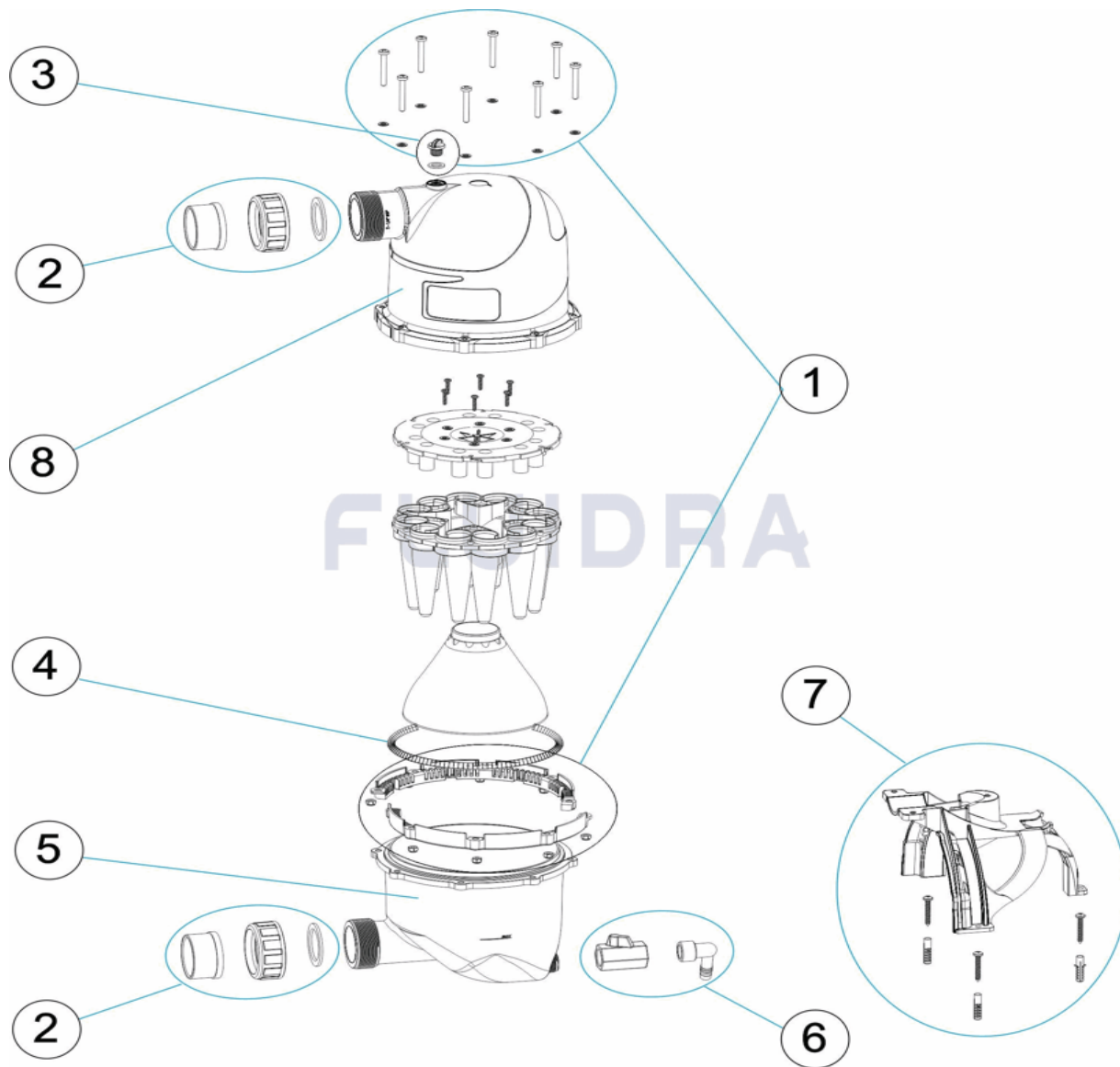
BESCHREIBUNG: **HIDROSPIN COMPACT - (MI)**

HINWEISE

POS	CODE	HINWEISE
2	* 4404200001	FÜR: 54185
2	* 4404200002	FÜR: 53743
8	* 53743R0004	FÜR: 53743
8	* 54185R0004	FÜR: 54185

CODIGO 53743, 54185

DESCRIÇÃO: HYDROSPIN COMPACT - (MI)



PORTUGUES

POS	CODIGO	DESCRIÇÃO	JANTIDADE	POS	CODIGO	DESCRIÇÃO	JANTIDADE
1	440420000	ANEL REFORÇO PARTIDO	5	440420004	DEPÓSITO HIDROSPIN COMPACT		
2	* 440420001	CJTO. MANGA CONEXÃO COLAR D. 50		6	440420005	CJTO. VÁLVULA ESGOTO	
2	* 440420002	CJTO. MANGA CONEXÃO COLAR 1 1/2"		7	440420006	SUPORTE HYDROSPIN	
3	4408031604	TAMPA COM JUNTA		8	* 53743R0004	TAMPA SAÍDA HYDROSPIN	
4	440420003	JUNTA TÓRICA 192X5		8	* 54185R0004	TAMPA SAÍDA HYDROSPIN (MI)	

CODIGO 53743, 54185

DESCRIÇÃO: HYDROSPIN COMPACT - (MI)

OBSERVACÕES

POS	CODIGO	OBSERVACÕES
2	* 4404200001	PARA: 54185
2	* 4404200002	PARA: 53743
8	* 53743R0004	PARA: 53743
8	* 54185R0004	PARA: 54185