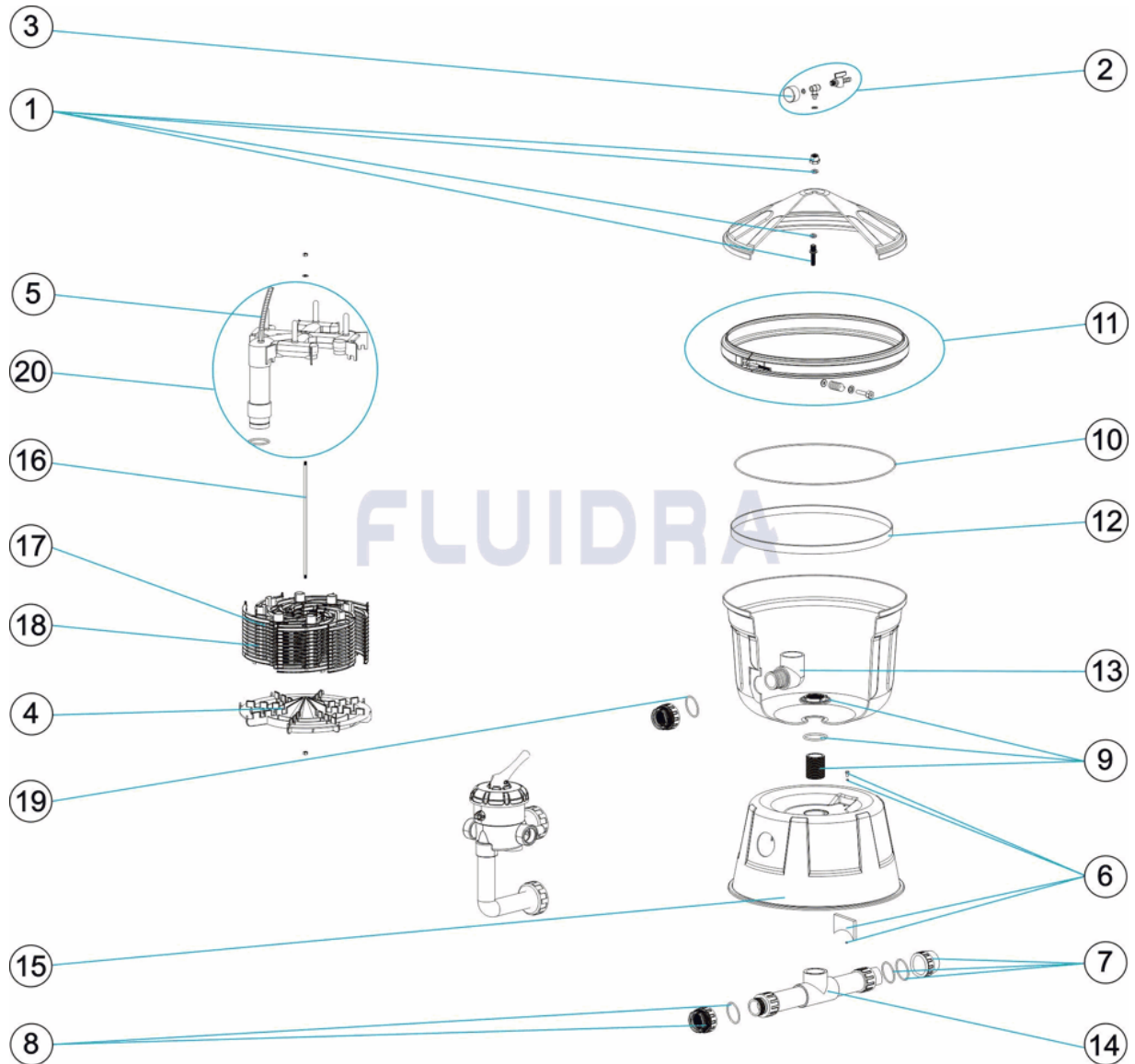


CODIGO FDE24, FDE36, FDE48, FDE60

DESCRIPCION: FILTRO DIATOMEAS DE 24-36-48-60-COLOR AMARILLO


ESPAÑOL

POS	CODIGO	DESCRIPCION	CANTIDAD	POS	CODIGO	DESCRIPCION	CANTIDAD
1	CE04210101	PURGA		16	* CE04210516	VARILLA INOX. M8X355 (24FT2)	
2	CE04210502	MANOMETRO COMPLETO		16	* CE04210517	VARILLA INOX. M8X505 (36FT2)	
3	CE04180405	MANOMETRO 1/8" 3 KG/C "		16	* CE04210518	VARILLA INOX. M8X655 (48FT2)	
4	CE04210104	REJILLA		16	* CE04210519	VARILLA INOX. M8X805 (60FT2)	
5	CE04210117	CJTO. TUBO PURGAAIRE NUEVA		17	* CE04210520	COSTILLA VERTICAL FG-1002 (24FT2) 12"	
6	CE04210106	CJTO. PINZAS		17	* CE04210522	COSTILLA VERTICAL FG-1003 (36FT2) 18"	
7	CE04210107	PURGA AGUA		17	* CE04210524	COSTILLA VERTICAL FG-1004 (48FT2) 24"	
8	CE04040112	RACORD SALIDA 2" + JUNTA TORIC "		17	* CE04210526	COSTILLA VERTICAL FG-1005 (60FT2) 30"	
9	CE04210110	FIJACION CONJUNTO ENTRADA		18	* CE04210521	COSTILLA VERTICAL PG-1902 (24FT2) 12"	
10	CE04210111	JUNTA TORICA		18	* CE04210523	COSTILLA VERTICAL PG-1903 (36FT2) 18"	
11	CE04210112	ZUNCHO		18	* CE04210525	COSTILLA VERTICAL PG-1904 (48FT2) 24"	
12	CE04210113	ARO INOX.		18	* CE04210527	COSTILLA VERTICAL PG-1905 (60FT2) 30"	
13	CE04210114	CODO		19	CE04040115	JUNTA TORICA D. 60X8	

CODIGO FDE24, FDE36, FDE48, FDE60

DESCRIPCION: FILTRO DIATOMEAS DE 24-36-48-60-COLOR AMARILLO

14	CE04210115	CJTO. ENTRADA	20	* CE04210529	CJTO. SALIDA 24 FT2
15	CE04210116	BASE	20	* CE04210530	CJTO. SALIDA 36FT2
20	* CE04210531	CJTO. SALIDA 48 FT2	20	* CE04210532	CJTO. SALIDA 60 FT2

CODIGO FDE24, FDE36, FDE48, FDE60

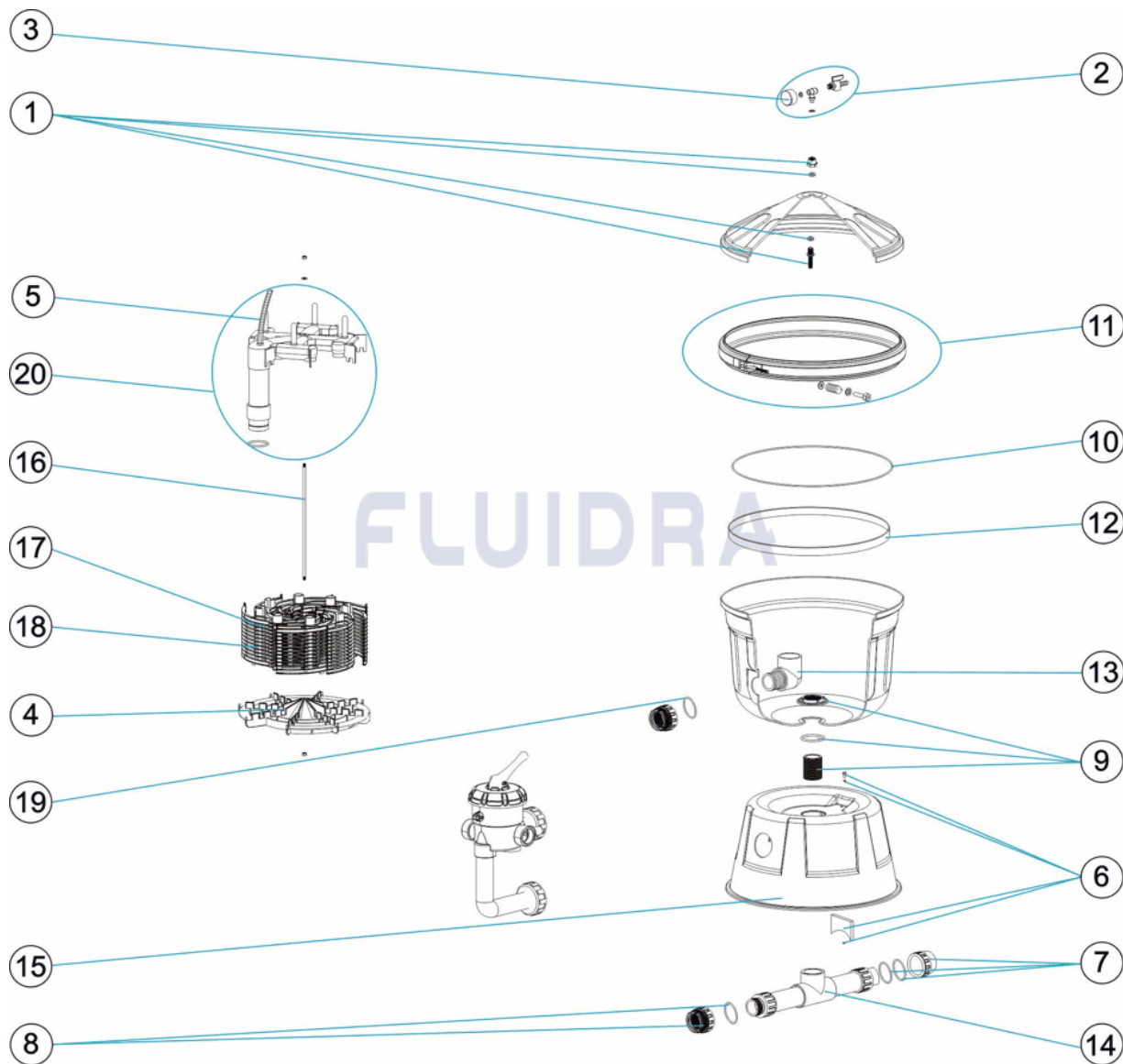
DESCRIPCION: FILTRO DIATOMEAS DE 24-36-48-60-COLOR AMARILLO

OBSERVACIONES

POS	CODIGO	OBSERVACIONES
16	* CE04210516	PARA: FDE24
16	* CE04210517	PARA: FDE36
16	* CE04210518	PARA: FDE48
16	* CE04210519	PARA: FDE60
17	* CE04210520	PARA: FDE24
17	* CE04210522	PARA: FDE36
17	* CE04210524	PARA: FDE48
17	* CE04210526	PARA: FDE60
18	* CE04210521	PARA: FDE24
18	* CE04210523	PARA: FDE36
18	* CE04210525	PARA: FDE48
18	* CE04210527	PARA: FDE60
20	* CE04210529	PARA: FDE24
20	* CE04210530	PARA: FDE36
20	* CE04210531	PARA: FDE48
20	* CE04210532	PARA: FDE60

CODE FDE24, FDE36, FDE48, FDE60

DESCRIPTION: FILTRE DIATOMÉES DE 24-36-48-60-COULEUR JAUNE


FRANCAIS

POS	CODE	DESCRIPTION	QUANTITE	POS	CODE	DESCRIPTION	QUANTITE
1	CE04210101	PURGE		16	* CE04210516	CHARNIER INOX. M8X355 (24FT2)	
2	CE04210502	MANOMETRE COMPLET		16	* CE04210517	CHARNIER INOX. M8X505 (36FT2)	
3	CE04180405	MANOMETRE 1/8" 3 KG./C "		16	* CE04210518	CHARNIER INOX. M8X655 (48FT2)	
4	CE04210104	GRILLE		16	* CE04210519	CHARNIER INOX. M8X805 (60FT2)	
5	CE04210117	ENSEMBLE TUBE PURGE D AIR NOUVEAU		17	* CE04210520	COTELETTE VERTICALE FG-1002 (24FT2) 1	
6	CE04210106	ENSEMBLE PINCES		17	* CE04210522	COTELETTE VERTICALE FG-1003 (36FT2) 1	
7	CE04210107	PURGE D'EAU		17	* CE04210524	COTELETTE VERTICALE FG-1004 (48FT2) 2	
8	CE04040112	RACCORD SORTIE 2" + JOINT TORIQU "		17	* CE04210526	COTELETTE VERTICALE FG-1005 (60FT2) 3	
9	CE04210110	FIXATION ENSEMBLE ENTREE		18	* CE04210521	COTELETTE VERTICALE PG-1902 (24FT2) 1	
10	CE04210111	JOINT TORIQUE		18	* CE04210523	COTELETTE VERTICALE PG-1903 (36FT2) 1	
11	CE04210112	COLLIER		18	* CE04210525	COTELETTE VERTICALE PG-1904 (48FT2) 2	
12	CE04210113	BRIDE INOX		18	* CE04210527	COTELETTE VERTICALE PG-1905 (60FT2) 3	
13	CE04210114	COUDE		19	CE04040115	JOINT TORIQUE D 60X8	

CODE **FDE24, FDE36, FDE48, FDE60**DESCRIPTION: **FILTRE DIATOMÉES DE 24-36-48-60-COULEUR JAUNE**

14	CE04210115	ENSEMBLE ENTREE	20	* CE04210529	ENSEMBLE SORTIE 24 FT
15	CE04210116	BASE	20	* CE04210530	ENSEMBLE SORTIE 36 FT
20	* CE04210531	ENSEMBLE SORTIE 48 FT	20	* CE04210532	ENSEMBLE SORTIE 60 FT

CODE FDE24, FDE36, FDE48, FDE60

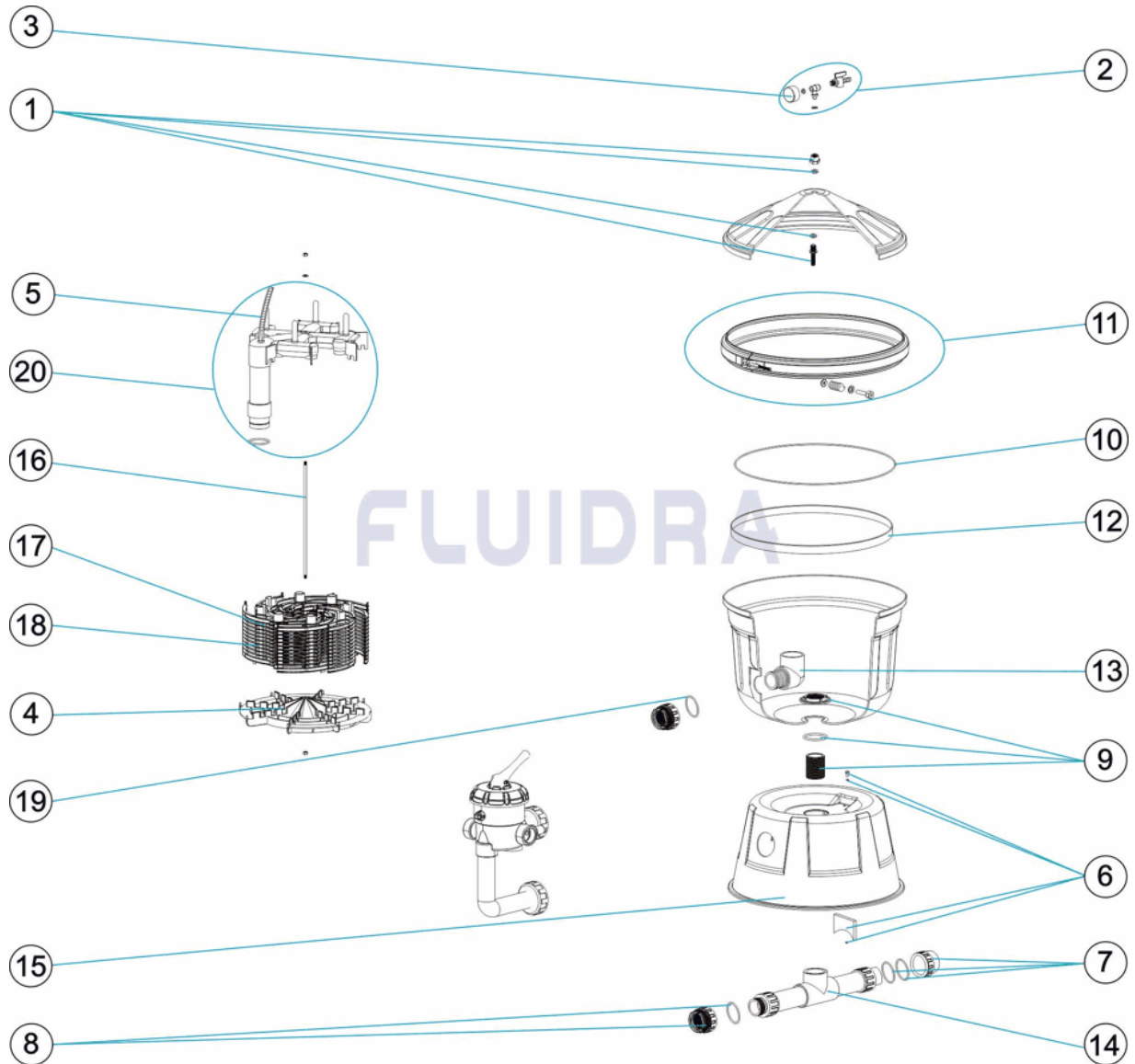
DESCRIPTION: FILTRE DIATOMÉES DE 24-36-48-60-COULEUR JAUNE

OBSERVATIONS

POS	CODE	OBSERVATIONS
16	* CE04210516	POUR: FDE24
16	* CE04210517	POUR: FDE36
16	* CE04210518	POUR: FDE48
16	* CE04210519	POUR: FDE60
17	* CE04210520	POUR: FDE24
17	* CE04210522	POUR: FDE36
17	* CE04210524	POUR: FDE48
17	* CE04210526	POUR: FDE60
18	* CE04210521	POUR: FDE24
18	* CE04210523	POUR: FDE36
18	* CE04210525	POUR: FDE48
18	* CE04210527	POUR: FDE60
20	* CE04210529	POUR: FDE24
20	* CE04210530	POUR: FDE36
20	* CE04210531	POUR: FDE48
20	* CE04210532	POUR: FDE60

CODE FDE24, FDE36, FDE48, FDE60

DESCRIPTION: 24-36-48-60-YELLOW DIATOMACEOUS EARTH (DE) FILTER


ENGLISH

POS	CODE	DESCRIPTION	QUANTITY	POS	CODE	DESCRIPTION	QUANTITY
1	CE04210101	PURGE		16	* CE04210516	STAINLES ROD M8X355 (24FT2)	
2	CE04210502	COMPLETE PRESSURE GAUGE UNIT		16	* CE04210517	STAINLES ROD M8X505 (36FT2)	
3	CE04180405	PRESSURE GAUGE 1/8" 3 KG./C "		16	* CE04210518	STAINLES ROD M8X655 (48FT2)	
4	CE04210104	GRILLE		16	* CE04210519	STAINLES ROD M8X805 (60FT2)	
5	CE04210117	SET AIR DRAINAGE PIPE NEW		17	* CE04210520	VERTICAL RIB FG-1002 (24FT2) 12"	
6	CE04210106	CLAMP ASSEMBLY		17	* CE04210522	VERTICAL RIB FG-1003 (36FT2) 18"	
7	CE04210107	WATER PURGE		17	* CE04210524	VERTICAL RIB FG-1004 (48FT2) 24"	
8	CE04040112	2" OUTLET FITTING + O'RING "		17	* CE04210526	VERTICAL RIB FG-1005 (60FT2) 30"	
9	CE04210110	INLET ASSEMBLY ANCHOR		18	* CE04210521	VERTICAL RIB PG-1902 (24FT2) 12"	
10	CE04210111	O' RING		18	* CE04210523	VERTICAL RIB PG-1903 (36FT2) 18"	
11	CE04210112	V-CLAMP		18	* CE04210525	VERTICAL RIB PG-1904 (48FT2) 24"	
12	CE04210113	S. S. FACEPLATE		18	* CE04210527	VERTICAL RIB PG-1905 (60FT2) 30"	
13	CE04210114	ELBOW		19	CE04040115	O' RING D. 60X8	



PARTS BREAKDOWN

REV.: 1
DATE: 04/07/2012
SHEET: 2/3

686

CODE FDE24, FDE36, FDE48, FDE60

DESCRIPTION: 24-36-48-60-YELLOW DIATOMACEOUS EARTH (DE) FILTER

14	CE04210115	INLET ASSEMBLY	20	* CE04210529	OUTLET ASSEMBLY 24 FT
15	CE04210116	BASE	20	* CE04210530	OUTLET ASSEMBLY 36 FT
20	* CE04210531	OUTLET ASSEMBLY 48 FT	20	* CE04210532	OUTLET ASSEMBLY 60 FT

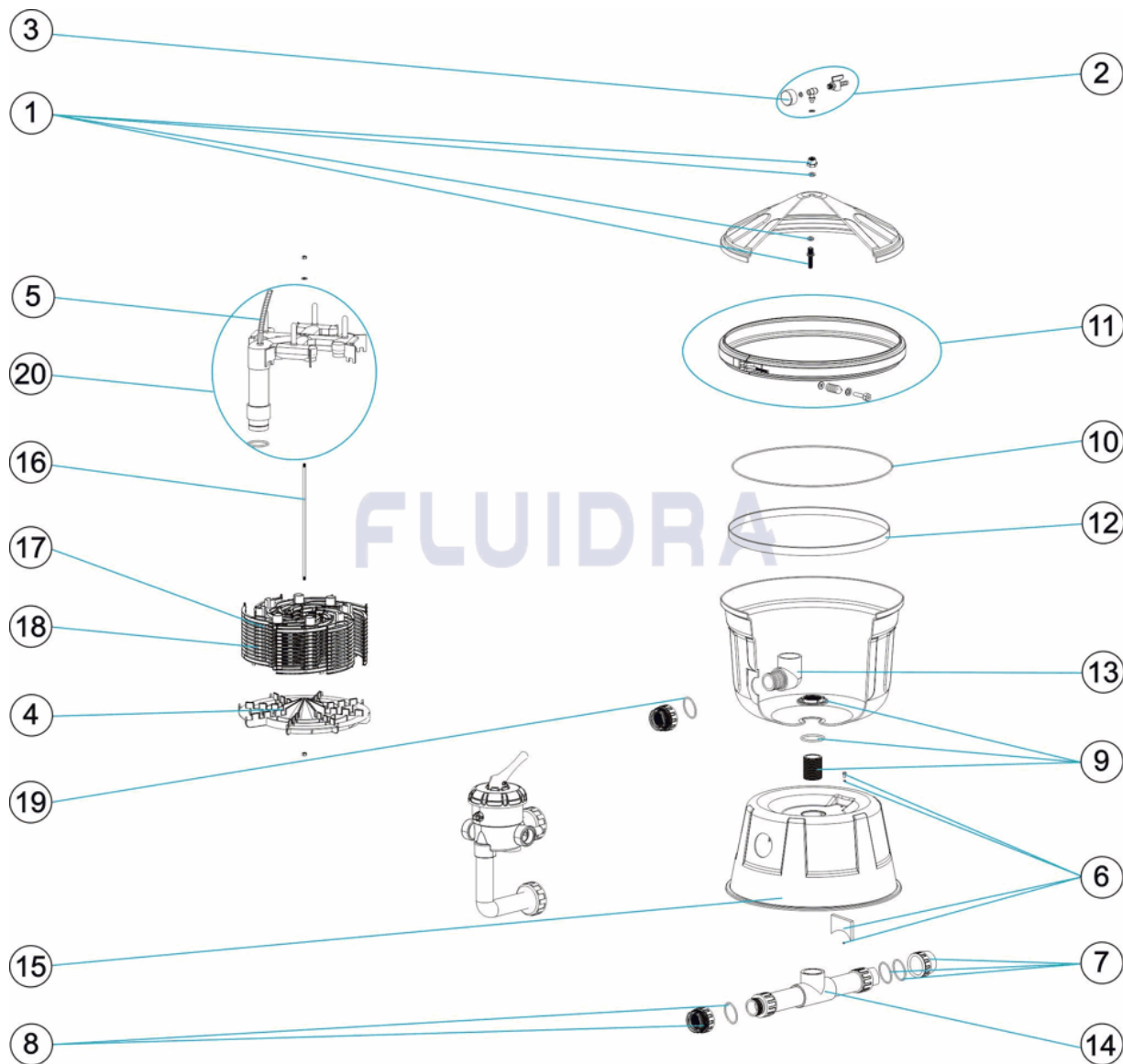
CODE **FDE24, FDE36, FDE48, FDE60**DESCRIPTION: **24-36-48-60-YELLOW DIATOMACEOUS EARTH (DE) FILTER**

OBSERVATIONS

POS	CODE	OBSERVATIONS
16	* CE04210516	FOR: FDE24
16	* CE04210517	FOR: FDE36
16	* CE04210518	FOR: FDE48
16	* CE04210519	FOR: FDE60
17	* CE04210520	FOR: FDE24
17	* CE04210522	FOR: FDE36
17	* CE04210524	FOR: FDE48
17	* CE04210526	FOR: FDE60
18	* CE04210521	FOR: FDE24
18	* CE04210523	FOR: FDE36
18	* CE04210525	FOR: FDE48
18	* CE04210527	FOR: FDE60
20	* CE04210529	FOR: FDE24
20	* CE04210530	FOR: FDE36
20	* CE04210531	FOR: FDE48
20	* CE04210532	FOR: FDE60

CODICE FDE24, FDE36, FDE48, FDE60

DESCRIZIONE: FILTRO DIATOMEAS DA 24-36-48-60 COLOR GIALLO


ITALIANO

POS	CODICE	DESCRIZIONE	QUANTITA'	POS	CODICE	DESCRIZIONE	QUANTITA'
1	CE04210101	SPURGO		16	* CE04210516	BARRA FILETTATA INOX. M8X355 (24FT2)	
2	CE04210502	MANOMETRO COMPLETO		16	* CE04210517	BARRA FILETTATA INOX. M8X505 (36FT2)	
3	CE04180405	MANOMETRO 1/8" 3 KG./C "		16	* CE04210518	BARRA FILETTATA INOX. M8X655 (48FT2)	
4	CE04210104	GRIGLIA		16	* CE04210519	BARRA FILETTATA INOX. M8X805 (60FT2)	
5	CE04210117	KIT NOUVO MODELLO TUBO SCARIO ARIA		17	* CE04210520	COSTOLA FILTRO FG-1002 (24FT2) 12"	
6	CE04210106	GRUPPO PINZE		17	* CE04210522	COSTOLA FILTRO FG-1003 (36FT2) 18"	
7	CE04210107	SCARICO ACQUA		17	* CE04210524	COSTOLA FILTRO FG-1004 (48FT2) 24"	
8	CE04040112	RACCORDO USCITA 2" + O-RING		17	* CE04210526	COSTOLA FILTRO FG-1005 (60FT2) 30"	
9	CE04210110	FISSAGGIO GRUPPO ENTRATA		18	* CE04210521	COSTOLA FILTRO PG-1902 (24FT2) 12"	
10	CE04210111	O-RING		18	* CE04210523	COSTOLA FILTRO PG-1903 (36FT2) 18"	
11	CE04210112	FASCETTA		18	* CE04210525	COSTOLA FILTRO PG-1904 (48FT2) 24"	
12	CE04210113	FLANGIA INOX.		18	* CE04210527	COSTOLA FILTRO PG-1905 (60FT2) 30"	
13	CE04210114	GOMITO		19	CE04040115	O-RING D 60X8	

* SI FACCIA RIFERIMENTO AL FOGLIO DELLE OSSERVAZIONI

CODICE **FDE24, FDE36, FDE48, FDE60**DESCRIZIONE: **FILTRO DIATOMEAS DA 24-36-48-60 COLOR GIALLO**

14	CE04210115	GRUPPO ENTRATA	20	* CE04210529	KIT USCITA 24 FT2
15	CE04210116	BASE	20	* CE04210530	KIT USCITA 36 FT2
20	* CE04210531	KIT USCITA 48 FT2	20	* CE04210532	KIT USCITA 60 FT2

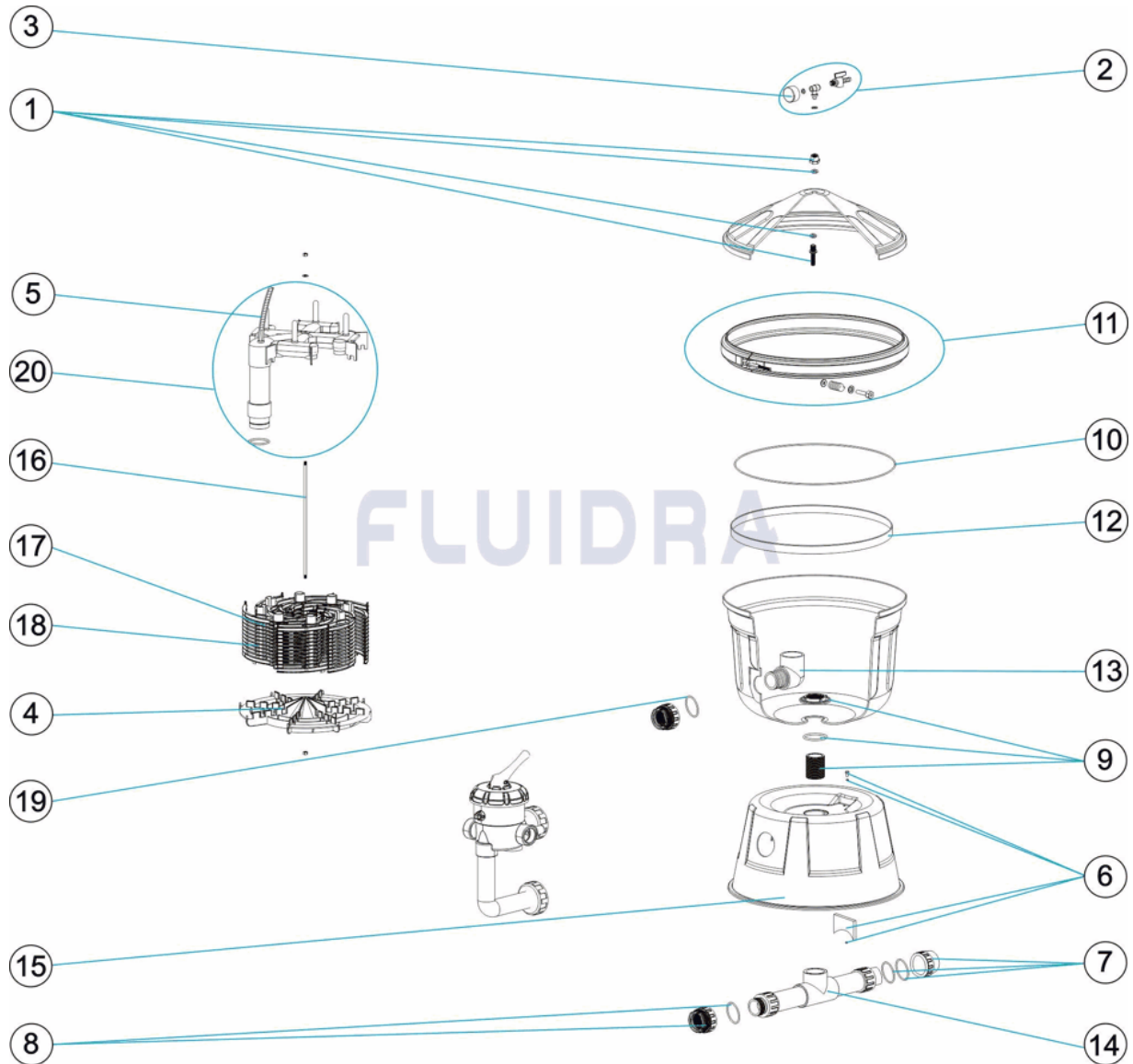
CODICE **FDE24, FDE36, FDE48, FDE60**DESCRIZIONE: **FILTRO DIATOMEAS DA 24-36-48-60 COLOR GIALLO**

OSSERVAZIONI

POS	CODICE	OSSERVAZIONI
16	* CE04210516	PER: FDE24
16	* CE04210517	PER: FDE36
16	* CE04210518	PER: FDE48
16	* CE04210519	PER: FDE60
17	* CE04210520	PER: FDE24
17	* CE04210522	PER: FDE36
17	* CE04210524	PER: FDE48
17	* CE04210526	PER: FDE60
18	* CE04210521	PER: FDE24
18	* CE04210523	PER: FDE36
18	* CE04210525	PER: FDE48
18	* CE04210527	PER: FDE60
20	* CE04210529	PER: FDE24
20	* CE04210530	PER: FDE36
20	* CE04210531	PER: FDE48
20	* CE04210532	PER: FDE60

CODE FDE24, FDE36, FDE48, FDE60

BESCHREIBUNG: FILTER KIESELALGEN DE 24-36-48-60-GELB


DEUTSCH

POS	CODE	BESCHREIBUNG	MENGE	POS	CODE	BESCHREIBUNG	MENGE
1	CE04210101	ABLASS		16	* CE04210516	RUNDEISEN EDELSTAHL M8 X 355 (24FT2)	
2	CE04210502	MANOMETER KOMPLETT		16	* CE04210517	RUNDEISEN EDELSTAHL M8 X 505 (36FT2)	
3	CE04180405	MANOMETER 1/8" 3 KG/C "		16	* CE04210518	RUNDEISEN EDELSTAHL M8 X 655 (48FT2)	
4	CE04210104	GITTER		16	* CE04210519	RUNDEISEN EDELSTAHL M8 X 805 (60FT2)	
5	CE04210117	SET ENTLÜFTUNGSROHR NEUVERSION		17	* CE04210520	VERTIKALRIPPE FG-1002 (24FT2) 12"	
6	CE04210106	SET KEMMEN		17	* CE04210522	VERTIKALRIPPE FG-1003 (36FT2) 18"	
7	CE04210107	WASSERABLASS		17	* CE04210524	VERTIKALRIPPE FG-1004 (48FT2) 24"	
8	CE04040112	GEWINDESTÜCK AUSGANG 2" UND O-RIN		17	* CE04210526	VERTIKALRIPPE FG-1005 (60FT2) 30"	
9	CE04210110	FIXIERUNG SET EINGANG		18	* CE04210521	VERTIKALRIPPE PG-1902 (24FT2) 12"	
10	CE04210111	O-RING		18	* CE04210523	VERTIKALRIPPE PG-1903 (36FT2) 18"	
11	CE04210112	EINSATZ		18	* CE04210525	VERTIKALRIPPE PG-1904 (48FT2) 24"	
12	CE04210113	RING EDELSTAHL		18	* CE04210527	VERTIKALRIPPE PG-1905 (60FT2) 30"	
13	CE04210114	WINKEL		19	CE04040115	O-RING D. 60 X 8	

CODE **FDE24, FDE36, FDE48, FDE60**

BESCHREIBUNG: **FILTER KIESELALGEN DE 24-36-48-60-GELB**

14	CE04210115	SET EINGANG	20	* CE04210529	SET AUSGANG 24 FT2
15	CE04210116	BASIS	20	* CE04210530	SET AUSGANG 36FT2
20	* CE04210531	SET AUSGANG 48 FT2	20	* CE04210532	SET AUSGANG 60 FT2

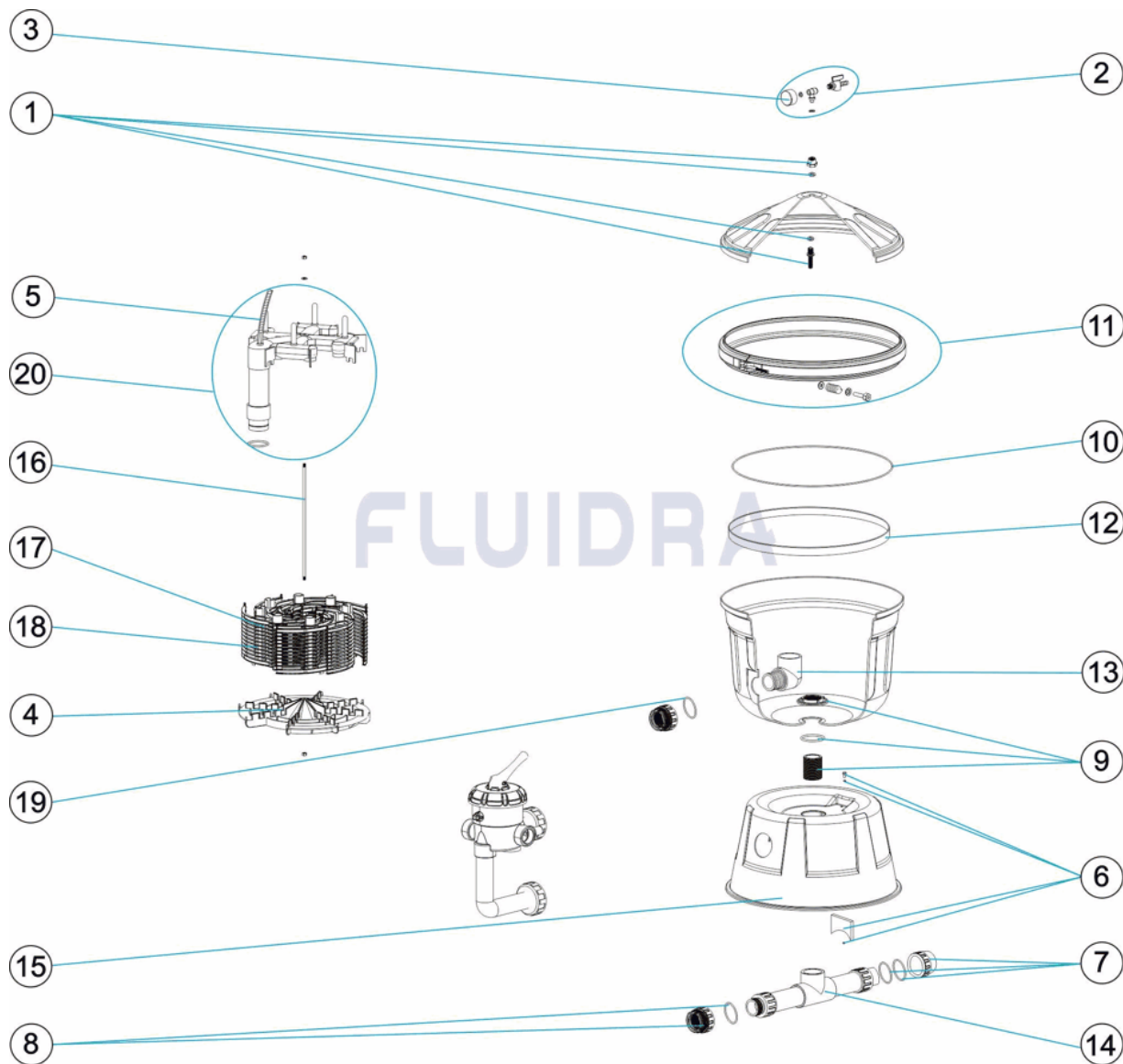
CODE **FDE24, FDE36, FDE48, FDE60**BESCHREIBUNG: **FILTER KIESELALGEN DE 24-36-48-60-GELB**

HINWEISE

POS	CODE	HINWEISE
16	* CE04210516	FÜR: FDE24
16	* CE04210517	FÜR: FDE36
16	* CE04210518	FÜR: FDE48
16	* CE04210519	FÜR: FDE60
17	* CE04210520	FÜR: FDE24
17	* CE04210522	FÜR: FDE36
17	* CE04210524	FÜR: FDE48
17	* CE04210526	FÜR: FDE60
18	* CE04210521	FÜR: FDE24
18	* CE04210523	FÜR: FDE36
18	* CE04210525	FÜR: FDE48
18	* CE04210527	FÜR: FDE60
20	* CE04210529	FÜR: FDE24
20	* CE04210530	FÜR: FDE36
20	* CE04210531	FÜR: FDE48
20	* CE04210532	FÜR: FDE60

CODIGO FDE24, FDE36, FDE48, FDE60

DESCRIÇÃO: FILTRO DIATOMÁCEAS DE 24-36-48-60-COR AMARELO



PORTUGUES

POS	CODIGO	DESCRIÇÃO	JANTIDADE	POS	CODIGO	DESCRIÇÃO	JANTIDADE
1	CE04210101	PURGA		16	* CE04210516	VARETA DE INOX.M8X355 (24FT2)	
2	CE04210502	MANÓMETRO COMPLETO		16	* CE04210517	VARETA DE INOX.M8X505 (36FT2)	
3	CE04180405	MANOMETRO 1/8" 3 KG./C "		16	* CE04210518	VARETA DE INOX.M8X655 (48FT2)	
4	CE04210104	GRELHA		16	* CE04210519	VARETA DE INOX.M8X805 (60FT2)	
5	CE04210117	CJTO. TTUBO PURGA AREIA NOVA		17	* CE04210520	COSTELA VERTICAL FG-1002 (24FT2) 12"	
6	CE04210106	CONJUNTO PINÇAS		17	* CE04210522	COSTELA VERTICAL FG-1003 (36FT2) 18"	
7	CE04210107	PURGA ÁGUA		17	* CE04210524	COSTELA VERTICAL FG-1004 (48FT2) 24"	
8	CE04040112	ACOPLADOR SAÍDA 2" + JUNTA TORIC "		17	* CE04210526	COSTELA VERTICAL FG-1005 (60FT2) 30"	
9	CE04210110	FIJXAÇÃO CONJUNTO ENTRADA		18	* CE04210521	COSTELA VERTICAL PG-1902 (24FT2) 12"	
10	CE04210111	JUNTA TÓRICA		18	* CE04210523	COSTELA VERTICAL PG-1903 (36FT2) 18"	
11	CE04210112	CONJUNTO ABRAÇADEIRA		18	* CE04210525	COSTELA VERTICAL PG-1904 (48FT2) 24"	
12	CE04210113	ARO INOX.		18	* CE04210527	COSTELA VERTICAL PG-1905 (60FT2) 30"	
13	CE04210114	COTOBELLO		19	CE04040115	JUNTA TÓRICA D 60X8	

CODIGO **FDE24, FDE36, FDE48, FDE60**DESCRICAÇÃO: **FILTRO DIATOMÁCEAS DE 24-36-48-60-COR AMARELO**

14	CE04210115	CONJUNTO ENTRADA	20	* CE04210529	CONJUNTO DE SAIDA 24 FT2
15	CE04210116	BASE	20	* CE04210530	CONJUNTO DE SAIDA 36 FT2
20	* CE04210531	CONJUNTO DE SAIDA 48 FT2	20	* CE04210532	CONJUNTO DE SAIDA 60 FT2

CODIGO **FDE24, FDE36, FDE48, FDE60**DESCRICAÇÃO: **FILTRO DIATOMÁCEAS DE 24-36-48-60-COR AMARELO****OBSERVACÕES**

POS	CODIGO	OBSERVACÕES
16	* CE04210516	PARA: FDE24
16	* CE04210517	PARA: FDE36
16	* CE04210518	PARA: FDE48
16	* CE04210519	PARA: FDE60
17	* CE04210520	PARA: FDE24
17	* CE04210522	PARA: FDE36
17	* CE04210524	PARA: FDE48
17	* CE04210526	PARA: FDE60
18	* CE04210521	PARA: FDE24
18	* CE04210523	PARA: FDE36
18	* CE04210525	PARA: FDE48
18	* CE04210527	PARA: FDE60
20	* CE04210529	PARA: FDE24
20	* CE04210530	PARA: FDE36
20	* CE04210531	PARA: FDE48
20	* CE04210532	PARA: FDE60