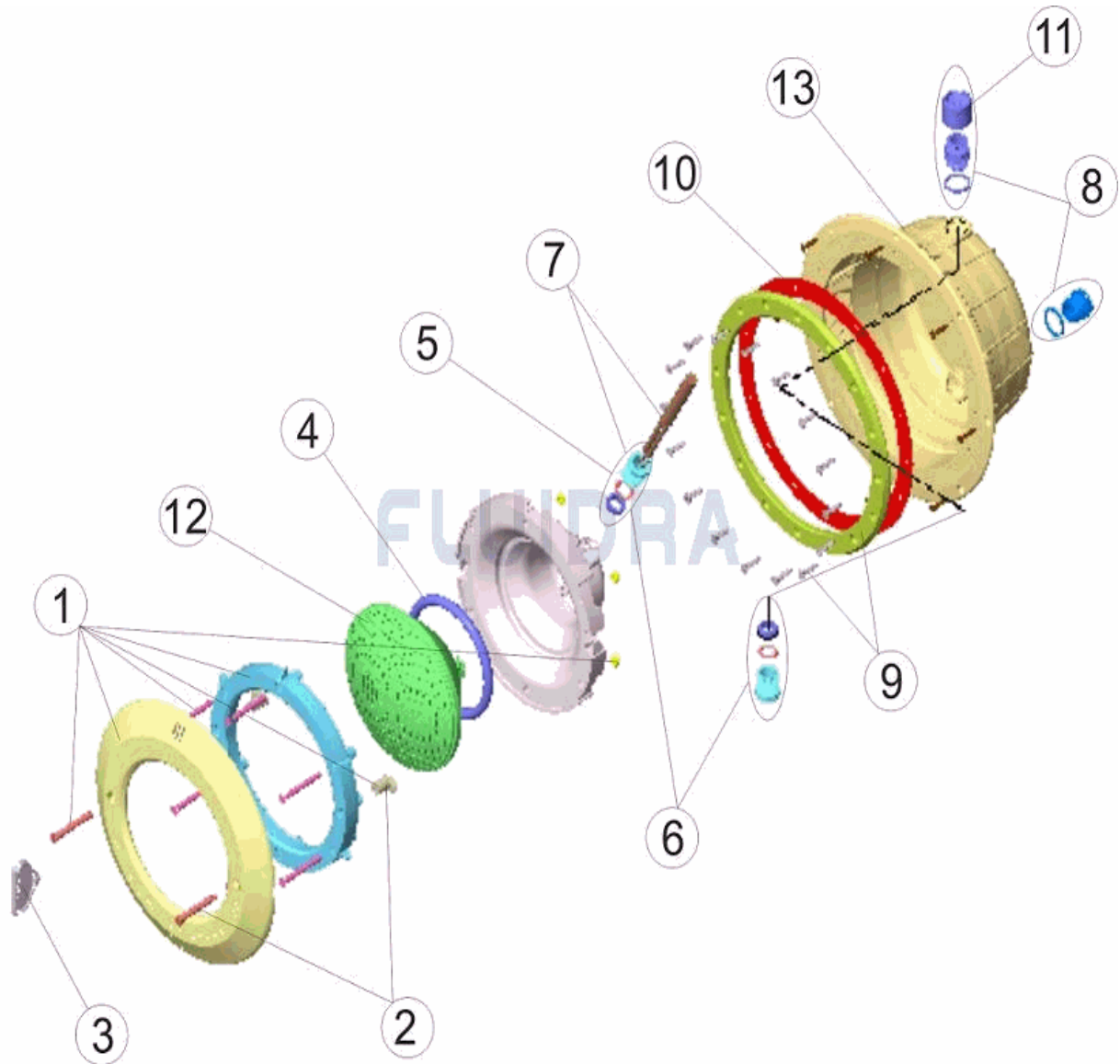


CODIGO **33979**

DESCRIPCION: **PROYECTOR NF PISCINA PANELES AUTOROSCA**

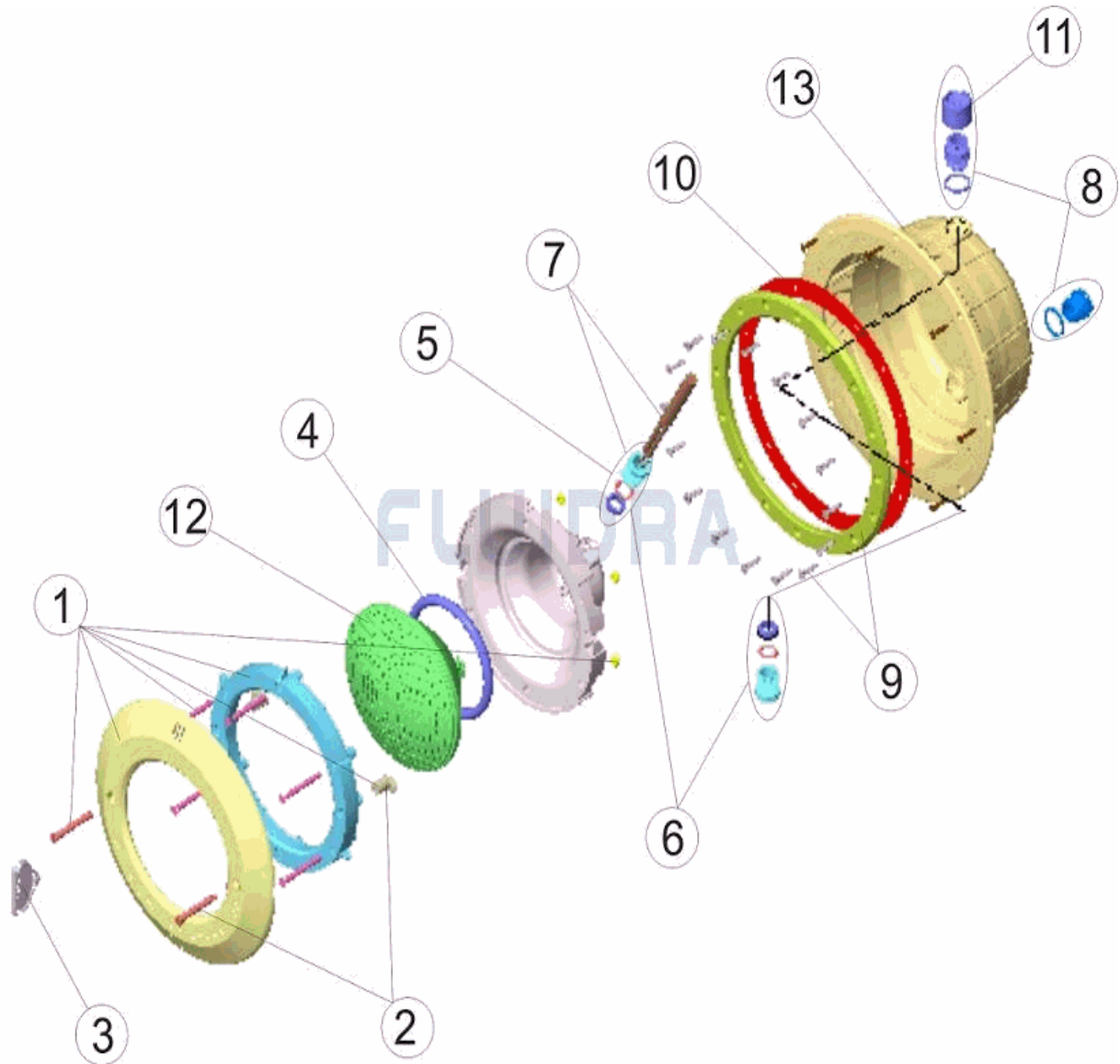


ESPAÑOL

POS	CODIGO	DESCRIPCION	CANTIDAD	POS	CODIGO	DESCRIPCION	CANTIDAD
1	4403014004	ARO EMBELLECEDOR BLANCO		8	4403010313	PRENSAESTOPAS CUERPO PROYECTOR I	
2	4403014007	TORNILLO FIJACION PROYECTOR NF		9	4403013506	BRIDA FIJACION PROYECTOR (PARKER)	
3	4403014006	LLAVE FIJACION TORNILLO NF		10	4403010402	JUNTA ADHESIVA ANCHA PROYECTOR STC	
4	4403010304	JUNTA TORICA PROYECTOR		11	4403010802	MANGUITO M-25	
5	4403014008	FONDO FOCO PROYECTOR NF PAR 56		12	4403010058	LAMPARA 300W.12.V.	
6	4403010110	PRENSAESTOPAS M25 HALOGENO		13	33979R0001	NICHO PIS. PANELES AUTOROSCA PROYE	
7	4403010314	CABLE PROYECTOR M-25 HALOGENO					

CODE 33979

DESCRIPTION: PROJECTEUR NF PISCINE PANNEAUX AUTOTARAUDEUR

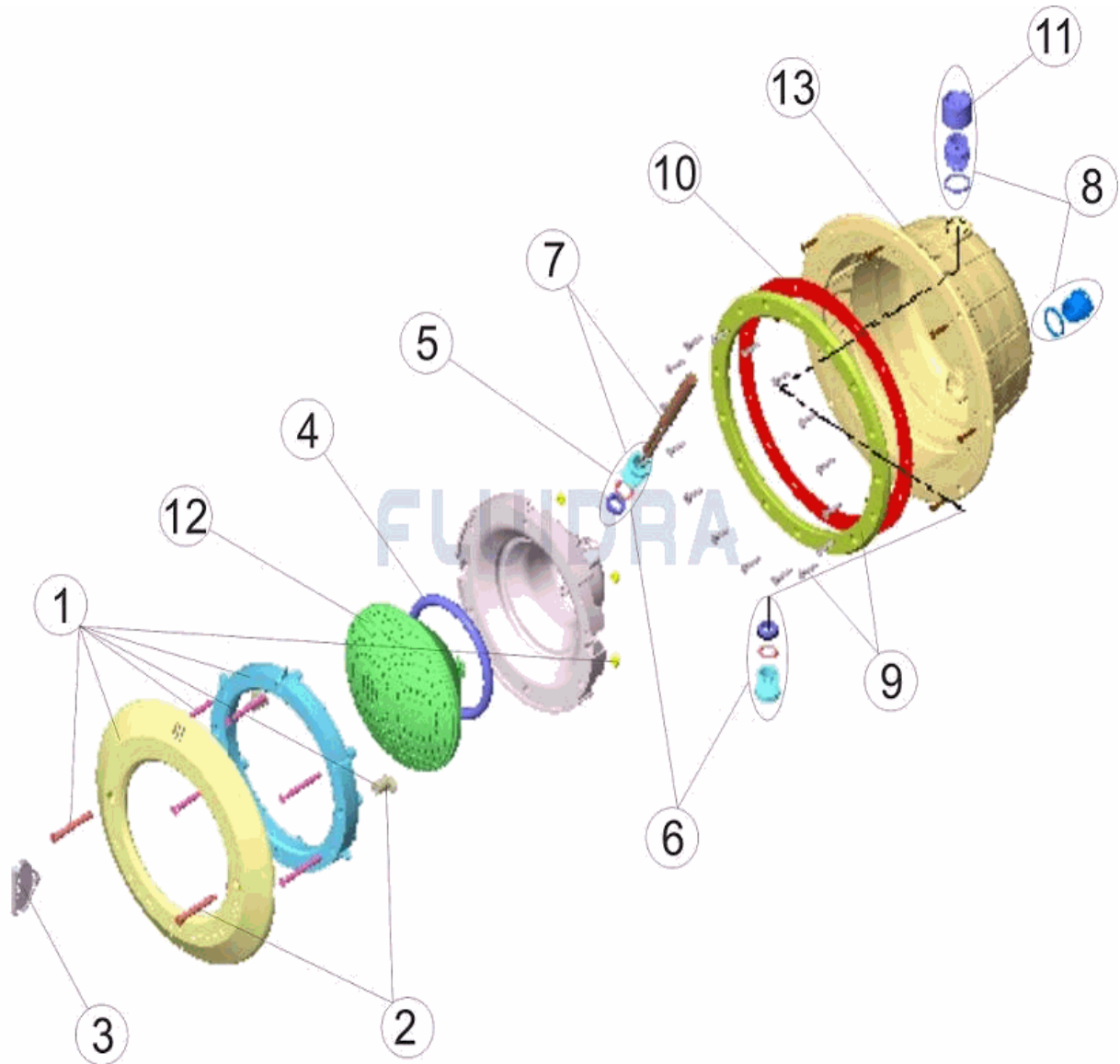


FRANCAIS

POS	CODE	DESCRIPTION	QUANTITE	POS	CODE	DESCRIPTION	QUANTITE
1	4403014004	ENJOLIVEUR BLANC		8	4403010313	CORPS PRESSE ETOUPE M-25	
2	4403014007	VIS FIXATION PROJECTEUR NF		9	4403013506	BRIDE FIXATION PROJECTEUR (PARKER)	
3	4403014006	CLE DE SERRAGE		10	4403010402	JOINT ADHESIF	
4	4403010304	JOINT TORIQUE PROJECTEUR		11	4403010802	MANCHON M-25	
5	4403014008	FOND PROJECTEUR NF PAR 56		12	4403010058	LAMPE	
6	4403010110	PRESSE-ETOUPE M 25		13	33979R0001	NICHE PROJECTEUR	
7	4403010314	CABLE PROJECTEUR M-25					

CODE **33979**

DESCRIPTION: **LIGHT NF PANEL POOL SELF - THREADING SCREW**

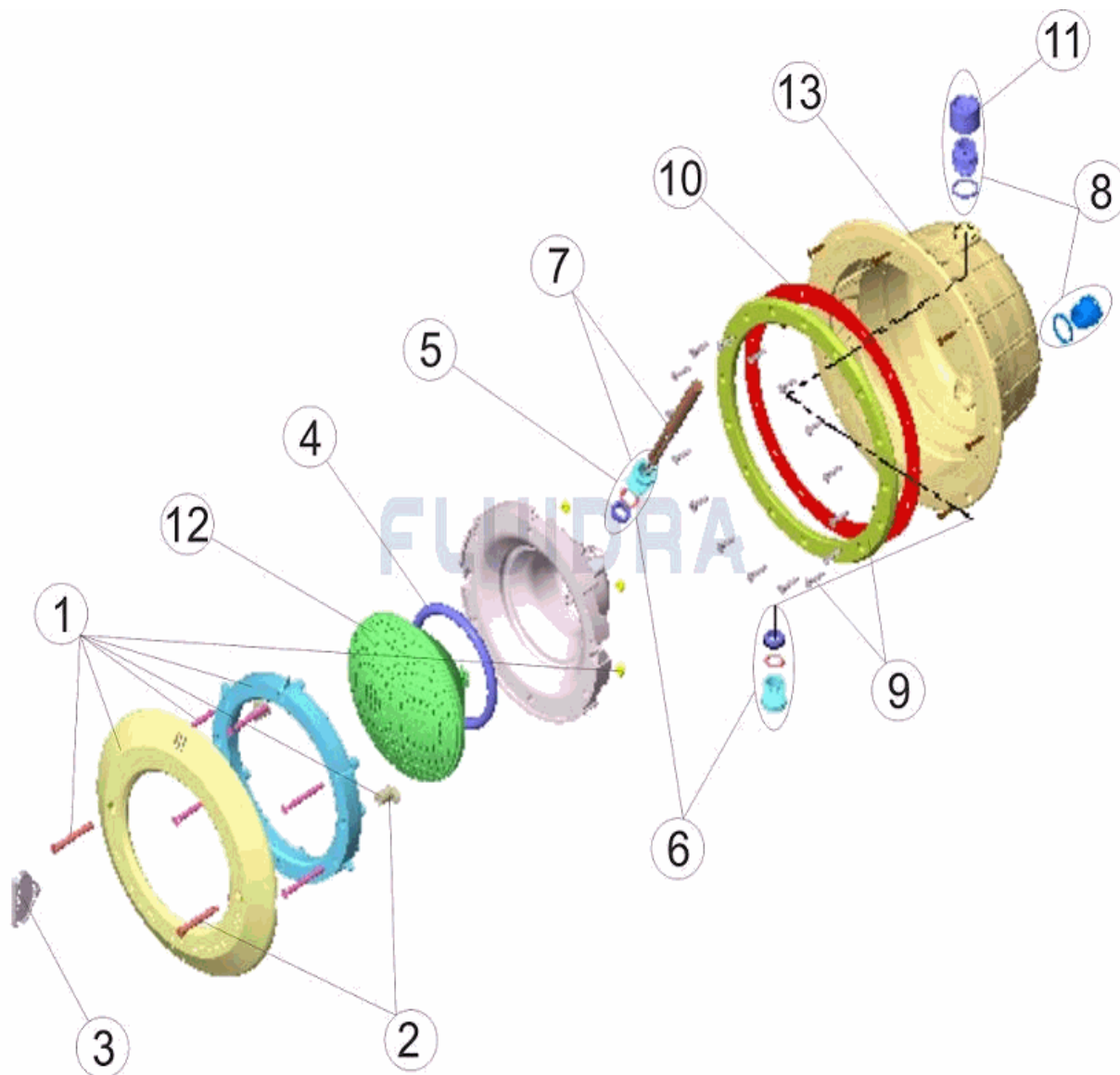


ENGLISH

POS	CODE	DESCRIPTION	QUANTITY	POS	CODE	DESCRIPTION	QUANTITY
1	4403014004	FACE PLATE WHITE		8	4403010313	BODY PACKING GLAND M-25	
2	4403014007	LIGHT FIXING SCREW		9	4403013506	LIGHT FIXING FLANGE (PARKER)	
3	4403014006	FIXING KEY		10	4403010402	ADHESIVE GASKET	
4	4403010304	LIGHT O RING		11	4403010802	MUFF M-25	
5	4403014008	BACK COVER UWL NF PAR 56		12	4403010058	LIGHTBULB	
6	4403010110	PACKING GLAND M 25		13	33979R0001	FLOODLAMP HOUSING	
7	4403010314	LIGHT CABLE M-25					

CODICE **33979**

DESCRIZIONE: **PROIETTORE NF PISCINA PANNELLI AUTOFILETTO**

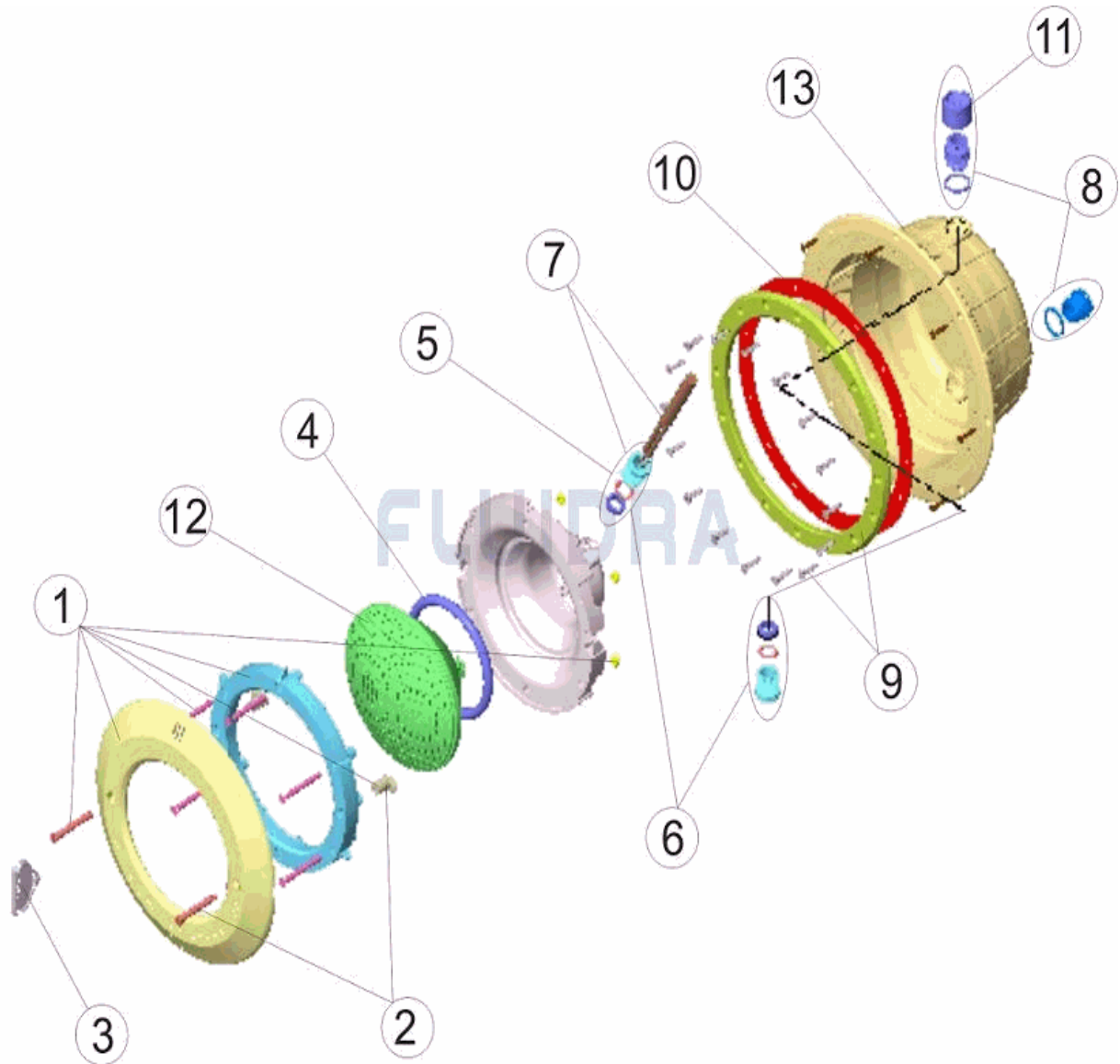


ITALIANO

POS	CODICE	DESCRIZIONE	QUANTITA'	POS	CODICE	DESCRIZIONE	QUANTITA'
1	4403014004	FLANGIA FINITURA COLORE BIANCO		8	4403010313	PRESSACAVI CORPO M-25	
2	4403014007	VITE FISSAGGIO FARO NF		9	4403013506	FLANGIA FISSAGGIO FARO (PARKER)	
3	4403014006	CHIAVE		10	4403010402	GUARNIZIONE ADESIVA	
4	4403010304	O-RING FARO		11	4403010802	MANICOTTO M-25	
5	4403014008	CALOTTA FARO NF PAR 56		12	4403010058	LAMPADINA	
6	4403010110	PRESSACAVI M 25		13	33979R0001	NICCHIA PROIETTORE	
7	4403010314	CABLE PROJECTEUR M-25					

CODE **33979**

BESCHREIBUNG: **UWS NF PLATTENBECKEN SELBSTBOHREND**

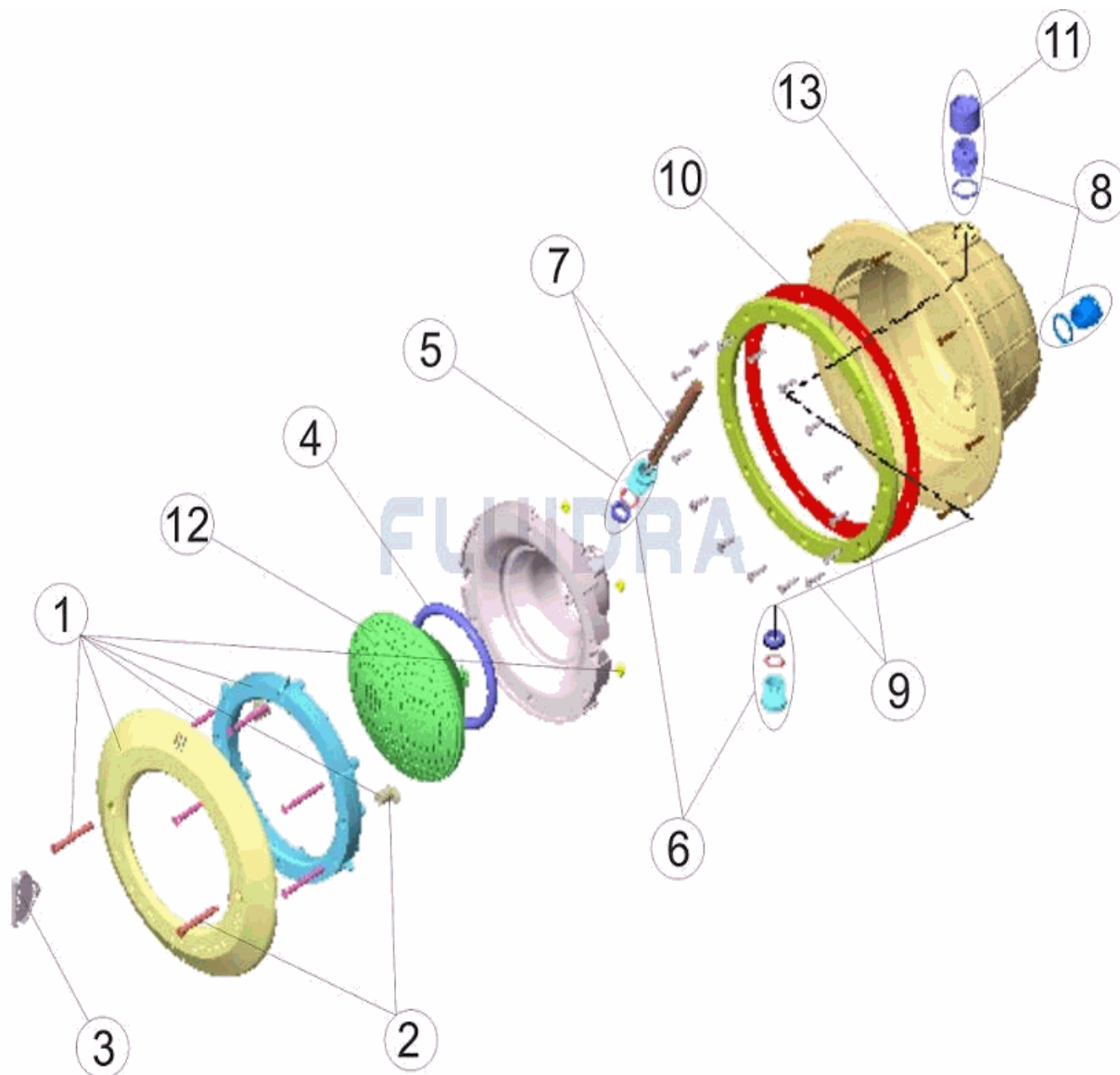


DEUTSCH

POS	CODE	BESCHREIBUNG	MENGE	POS	CODE	BESCHREIBUNG	MENGE
1	4403014004	ZIERRING WEISS		8	4403010313	QUETSCHVERSCHRAUBUNG GEHÄUSE UV	
2	4403014007	FIXIERSCHRAUBE UWS NF		9	4403013506	BEFESTIGUNGSFLANSCH UWS (PARKER)	
3	4403014006	SCHLÜSSEL FIXIERUNG SCHRAUBE NF		10	4403010402	DICHTUNG SELBSTKLEBEND BREIT UWS €	
4	4403010304	O-RING UWS		11	4403010802	NIPPEL M-25	
5	4403014008	BASIS UWS NF PAR 56		12	4403010058	LAMPE 300 W 12 V	
6	4403010110	QUETSCHVERSCHRAUBUNG M25 HALOGEN		13	33979R0001	EINBAUTOPF PLATTENBECKEN AUTOGEW	
7	4403010314	UWS-KABEL M-25 HALOGEN					

CODIGO **33979**

DESCRIÇÃO: **PROJECTOR NF PISCINA PAINÉIS AUTO ROSCA**



PORTUGUES

POS	CODIGO	DESCRIÇÃO	JANTIDADE	POS	CODIGO	DESCRIÇÃO	JANTIDADE
1	4403014004	ARO EMBELEZADOR BRANCO		8	4403010313	BUCIN CORPO M-25	
2	4403014007	PARAFUSO DE FIXAÇÃO PROJECTOR NF		9	4403013506	FLANGE FIXAÇÃO PROJECTOR (PARKER)	
3	4403014006	CHAVE DE PARAFUSOS		10	4403010402	JUNTA ADESIVA	
4	4403010304	JUNTA TÓRICA PROJECTOR		11	4403010802	MANGUITO M-25	
5	4403014008	FUNDO FOCO PROJECTOR NF PAR 56		12	4403010058	BOMBILHA	
6	4403010110	BUCIN M-25		13	33979R0001	NICHO PROJECTOR	
7	4403010314	CABO PROJECTOR M-25					