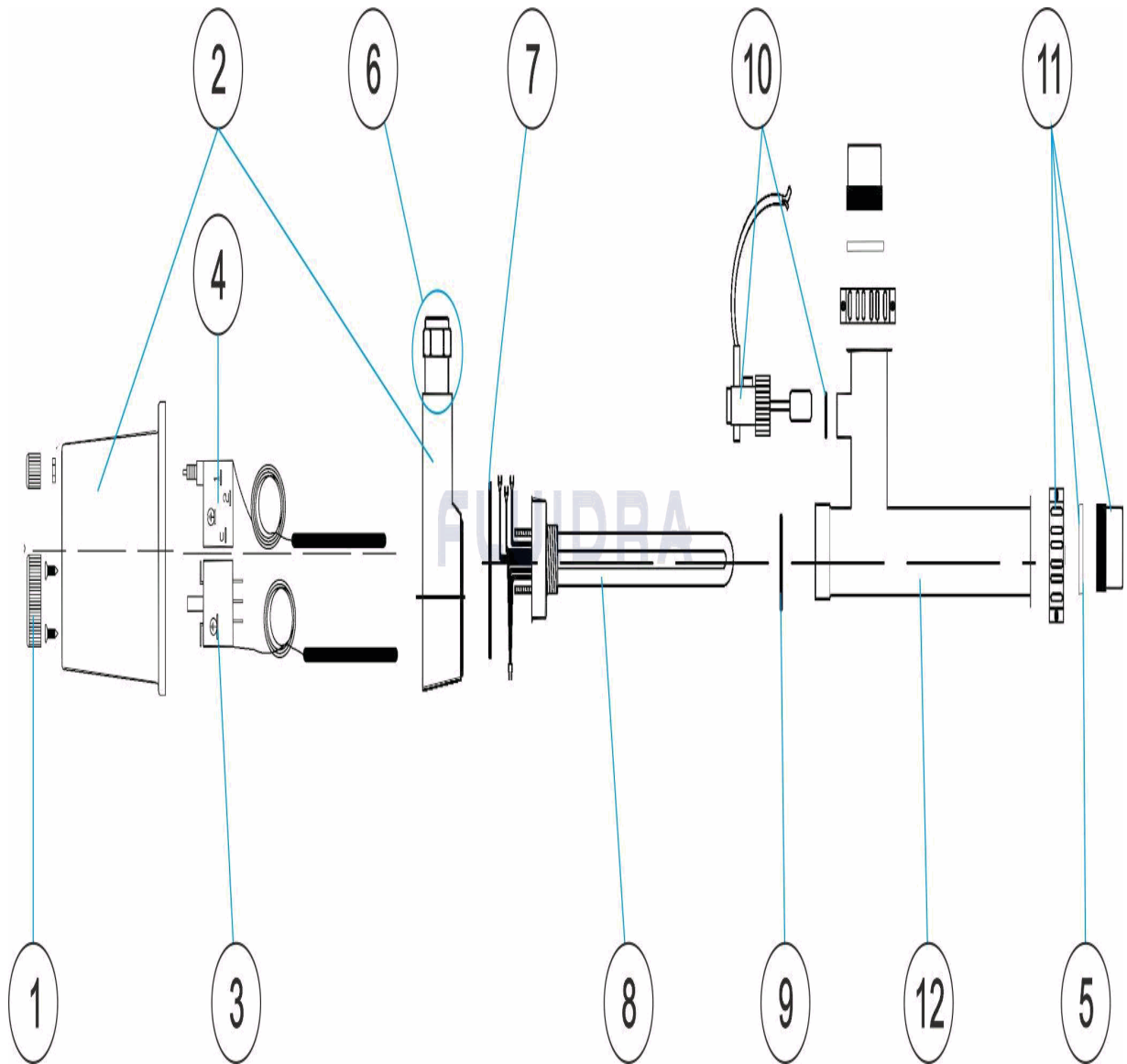


CODE 27831, 27832, 27833, 27834, 27835

BESCHREIBUNG: WÄRMEAUSTAUSACHER ECO



DEUTSCH

POS	CODE	BESCHREIBUNG	MENGE	POS	CODE	BESCHREIBUNG	MENGE
1	4407010201	GRADANZEIGER		8	* 4407010116	HEIZSTAB 12 KW	
2	4407010202	GEHÄUSE PVC		8	* 4407010117	HEIZSTAB 18 KW	
3	4407010122	TERMOSTAT STEUERUNG		9	4407010118	DICHTUNG HEIZSTAB	
4	4407010121	TEMPERATURBEGRENZER		10	4407010206	DURCHFLUSSMESSER	
5	4407010203	FLACHDICHTUNG		11	4407010108	NIPPEL WÄRMEÜBERTRAGER	
6	4407010204	SET QUETSCHVERSCHRAUBUNG		12	* 08756R0101	EDELSTAHLCHRANK (FÜR 08756)	
7	4407010205	O-RING ABSCHLUSSPLATTE		12	* 08757R0101	EDELSTAHLCHRANK: (FÜR 08757 UND 08	
8	* 4407010113	HEIZSTAB 3 KW		12	* 08759R0101	EDELSTAHLCHRANK (FÜR 08759)	
8	* 4407010114	HEIZSTAB 6 KW		12	* 08760R0101	EDELSTAHLCHRANK (FÜR 08760)	
8	* 4407010115	HEIZSTAB 9 KW					

CODE **27831, 27832, 27833, 27834, 27835**

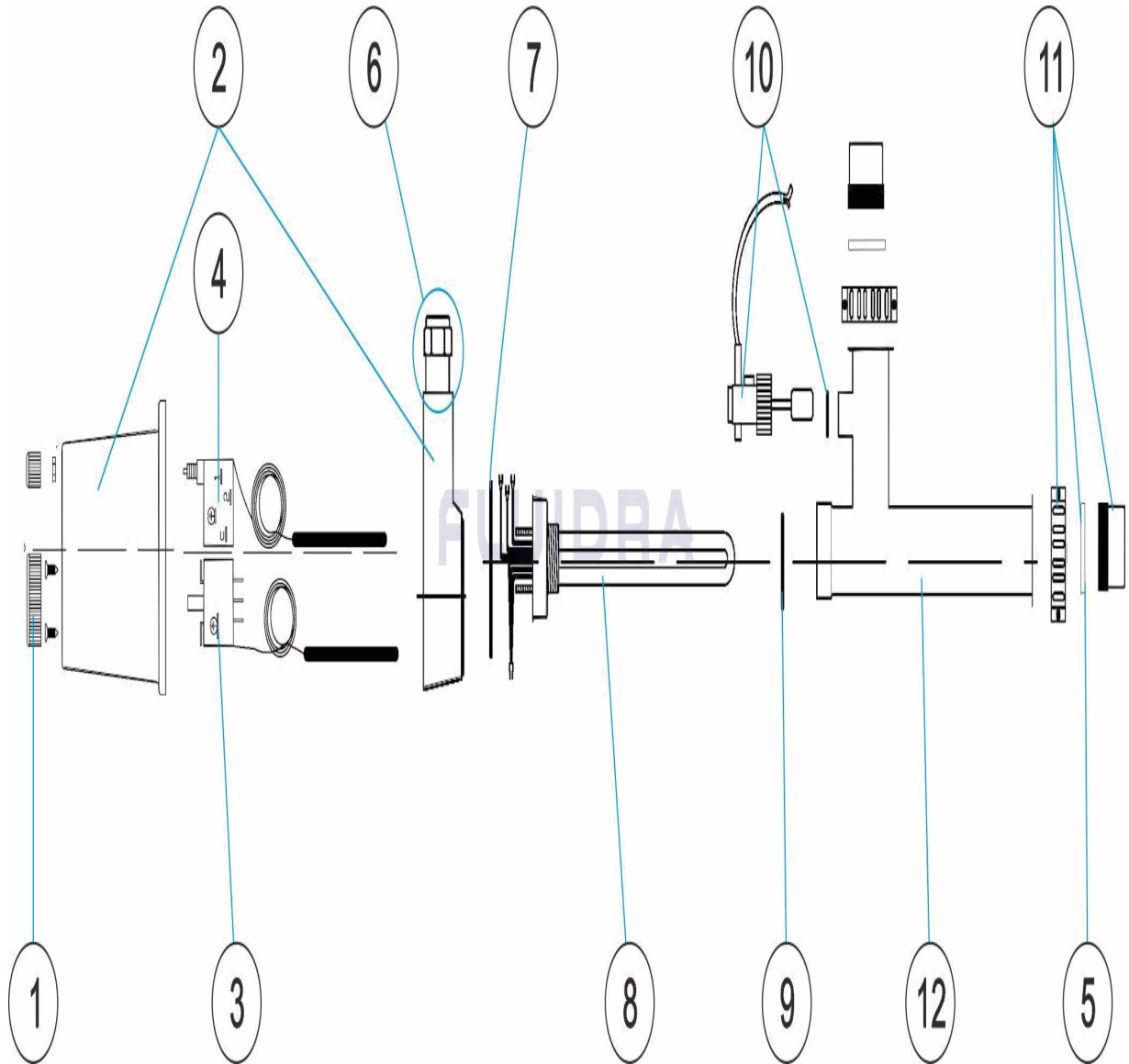
BESCHREIBUNG: **WÄRMEAUSTAUSACHER ECO**

HINWEISE

POS	CODE	HINWEISE
8	* 4407010113	FÜR: 27831
8	* 4407010114	FÜR: 27832
8	* 4407010115	FÜR: 27833
8	* 4407010116	FÜR: 27834
8	* 4407010117	FÜR: 27835
12	* 08756R0101	FÜR: 27831
12	* 08757R0101	FÜR: 27832, 27833
12	* 08759R0101	FÜR: 27834
12	* 08760R0101	FÜR: 27835

CODE 27831, 27832, 27833, 27834, 27835

DESCRIPTION: ECO EXCHANGER



ENGLISH

POS	CODE	DESCRIPTION	QUANTITY	POS	CODE	DESCRIPTION	QUANTITY
1	4407010201	GRADUATED VALVE POINTER		8	* 4407010116	ELEMENT 12 KW	
2	4407010202	PVC SHELL		8	* 4407010117	ELEMENT 18 KW	
3	4407010122	THERMOSTAT CONTROL		9	4407010118	ELEMENT SEAL	
4	4407010121	THERMOSTAT LIMIT		10	4407010206	FLOWSWITCH	
5	4407010203	FLAT GASKET		11	4407010108	HEAT EXCHANGER UNION	
6	4407010204	GLAND SEAL ASSY.		12	* 08756R0101	STAINLESS STEEL BODY (FOR 08756)	
7	4407010205	O-RING SEAL PLATE		12	* 08757R0101	STAINLESS STEEL BODY (FOR 08757 AND (
8	* 4407010113	ELEMENT 3 KW		12	* 08759R0101	STAINLESS STEEL BODY (FOR 08759)	
8	* 4407010114	ELEMENT 6 KW		12	* 08760R0101	STAINLESS STEEL BODY (FOR 08760)	
8	* 4407010115	ELEMENT 9 KW					

CODE **27831, 27832, 27833, 27834, 27835**

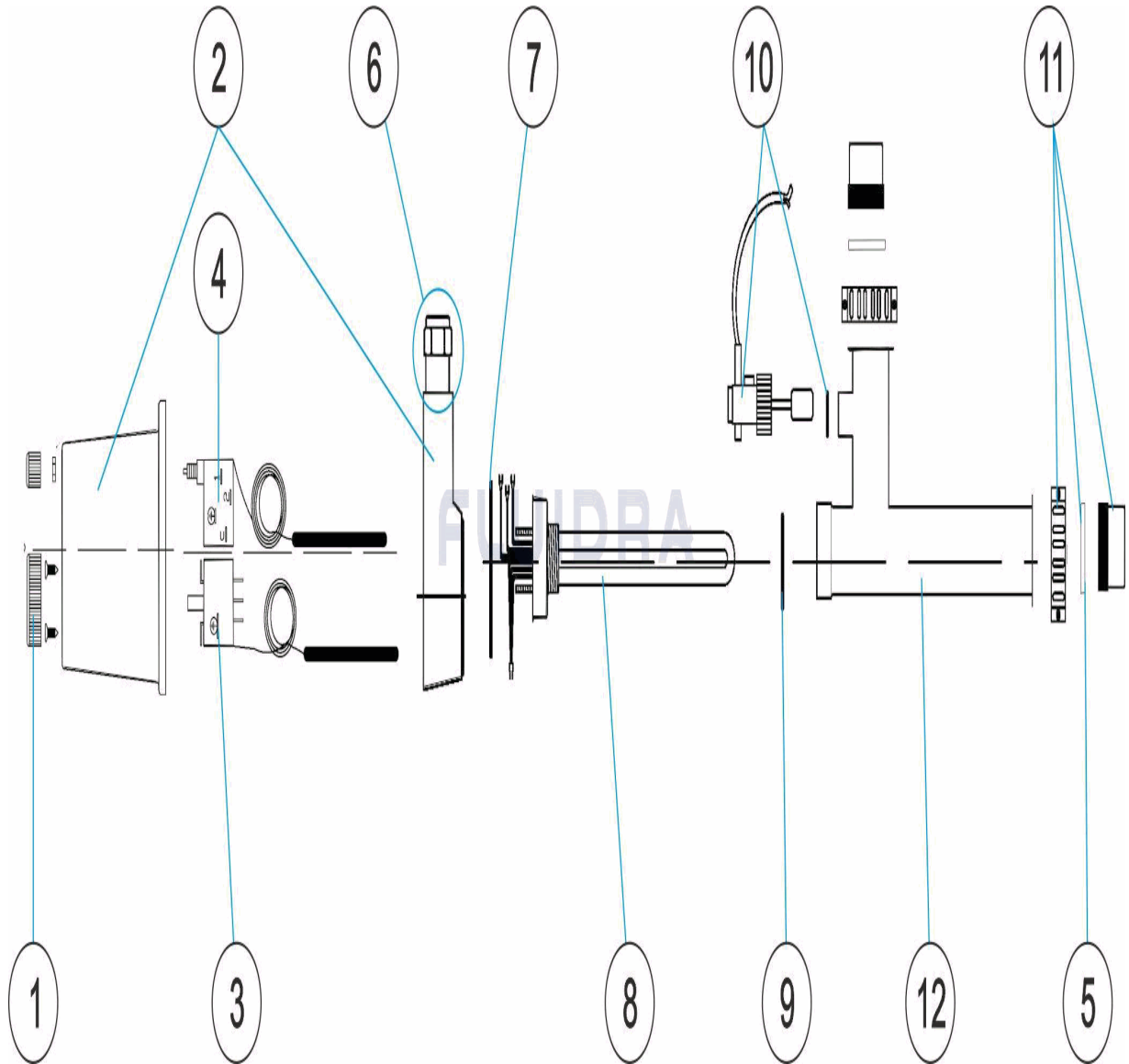
DESCRIPTION: **ECO EXCHANGER**

OBSERVATIONS

POS	CODE	OBSERVATIONS
8	* 4407010113	FOR: 27831
8	* 4407010114	FOR: 27832
8	* 4407010115	FOR: 27833
8	* 4407010116	FOR: 27834
8	* 4407010117	FOR: 27835
12	* 08756R0101	FOR: 27831
12	* 08757R0101	FOR: 27832, 27833
12	* 08759R0101	FOR: 27834
12	* 08760R0101	FOR: 27835

CODIGO 27831, 27832, 27833, 27834, 27835

DESCRIPCION: INTERCAMBIADOR ECO



ESPAÑOL

POS	CODIGO	DESCRIPCION	CANTIDAD	POS	CODIGO	DESCRIPCION	CANTIDAD
1	4407010201	MANECILLA GRADUADA		8	* 4407010116	RESISTENCIA 12 KW	
2	4407010202	CARCASA PVC		8	* 4407010117	RESISTENCIA 18 KW	
3	4407010122	TERMOSTATO DE CONTROL		9	4407010118	JUNTA RESISTENCIA	
4	4407010121	TERMOSTATO LIMITADOR		10	4407010206	FLUJOSTATO	
5	4407010203	JUNTA PLANA		11	4407010108	MANGUITO INTERCAMBIADOR	
6	4407010204	CJTO. PRENSAESTOPAS		12	* 08756R0101	CUERPO INOX. (PARA 08756)	
7	4407010205	JUNTA TORICA TAPETA		12	* 08757R0101	CUERPO INOX. (PARA 08757 Y 08758)	
8	* 4407010113	RESISTENCIA 3 KW		12	* 08759R0101	CUERPO INOX. (PARA 08759)	
8	* 4407010114	RESISTENCIA 6 KW		12	* 08760R0101	CUERPO INOX. (PARA 08760)	
8	* 4407010115	RESISTENCIA 9 KW					

CODIGO **27831, 27832, 27833, 27834, 27835**

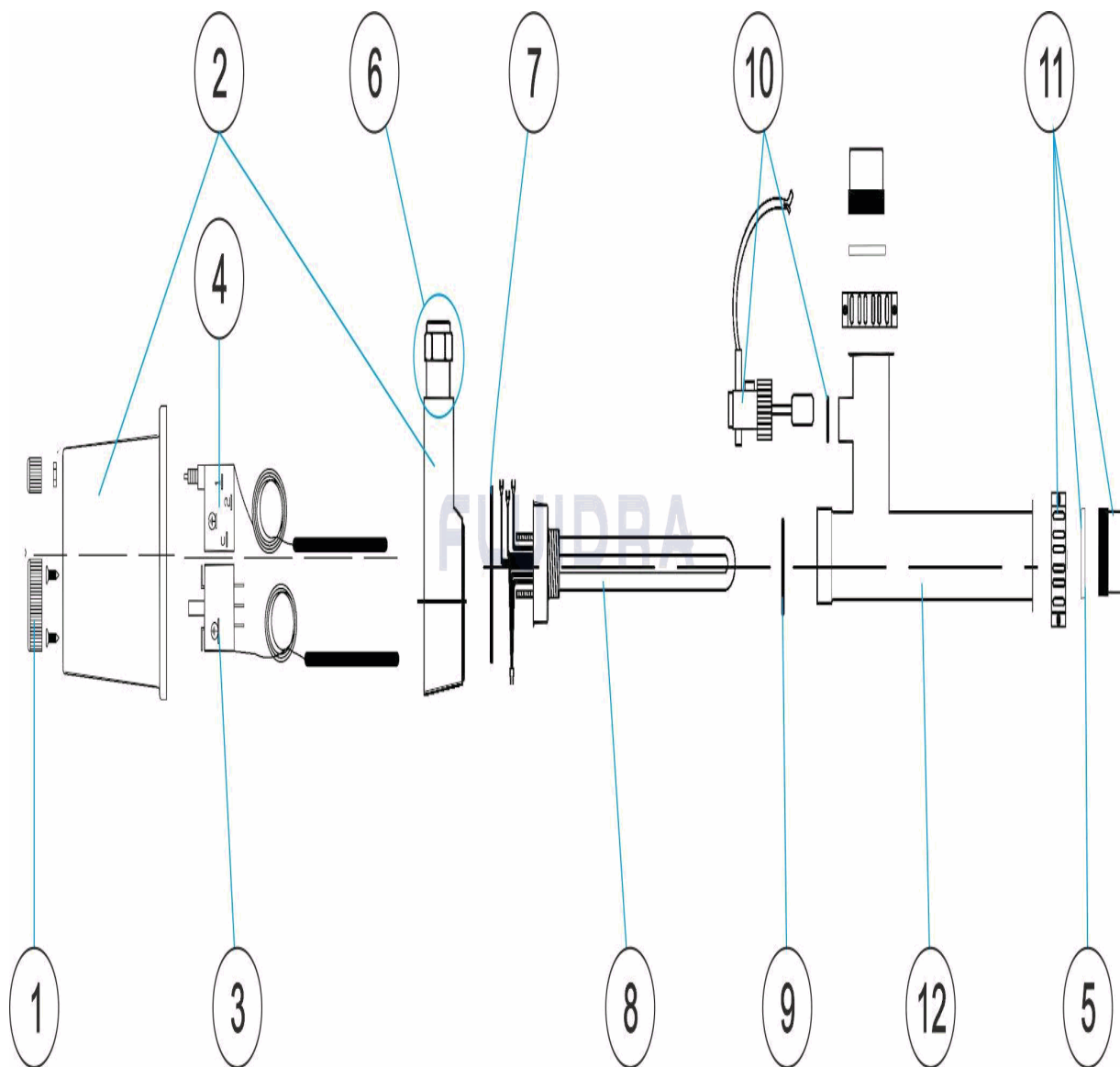
DESCRIPCION: INTERCAMBIADOR ECO

OBSERVACIONES

POS	CODIGO	OBSERVACIONES
8	* 4407010113	PARA: 27831
8	* 4407010114	PARA: 27832
8	* 4407010115	PARA: 27833
8	* 4407010116	PARA: 27834
8	* 4407010117	PARA: 27835
12	* 08756R0101	PARA: 27831
12	* 08757R0101	PARA: 27832, 27833
12	* 08759R0101	PARA: 27834
12	* 08760R0101	PARA: 27835

CODE 27831, 27832, 27833, 27834, 27835

DESCRIPTION: ÉCHANGEUR ÉCO



FRANCAIS

POS	CODE	DESCRIPTION	QUANTITE	POS	CODE	DESCRIPTION	QUANTITE
1	4407010201	MANETTE GRADUÉE		8	* 4407010116	RESISTANCE 12 KW	
2	4407010202	CARCASSE PVC		8	* 4407010117	RESISTANCE 18 KW	
3	4407010122	THERMOSTAT DE CONTROL		9	4407010118	JOINT RESISTANCE	
4	4407010121	THERMOSTAT LIMITEUR		10	4407010206	CONTROLEUR DE DEBIT	
5	4407010203	JOINT PLAT		11	4407010108	MANCHON RECHAUFFEUR	
6	4407010204	ENS. PRESSE ETOUPE		12	* 08756R0101	CORPS INOX POUR REF 48610	
7	4407010205	JOINT TORIQUE CACHE		12	* 08757R0101	CORPS INOX POUR REF 48611 ET 48612	
8	* 4407010113	RESISTANCE 3 KW		12	* 08759R0101	CORPS INOX POUR REF 48613	
8	* 4407010114	RESISTANCE 6 KW		12	* 08760R0101	CORPS INOX POUR REF 48614	
8	* 4407010115	RESISTANCE 9 KW					

CODE **27831, 27832, 27833, 27834, 27835**

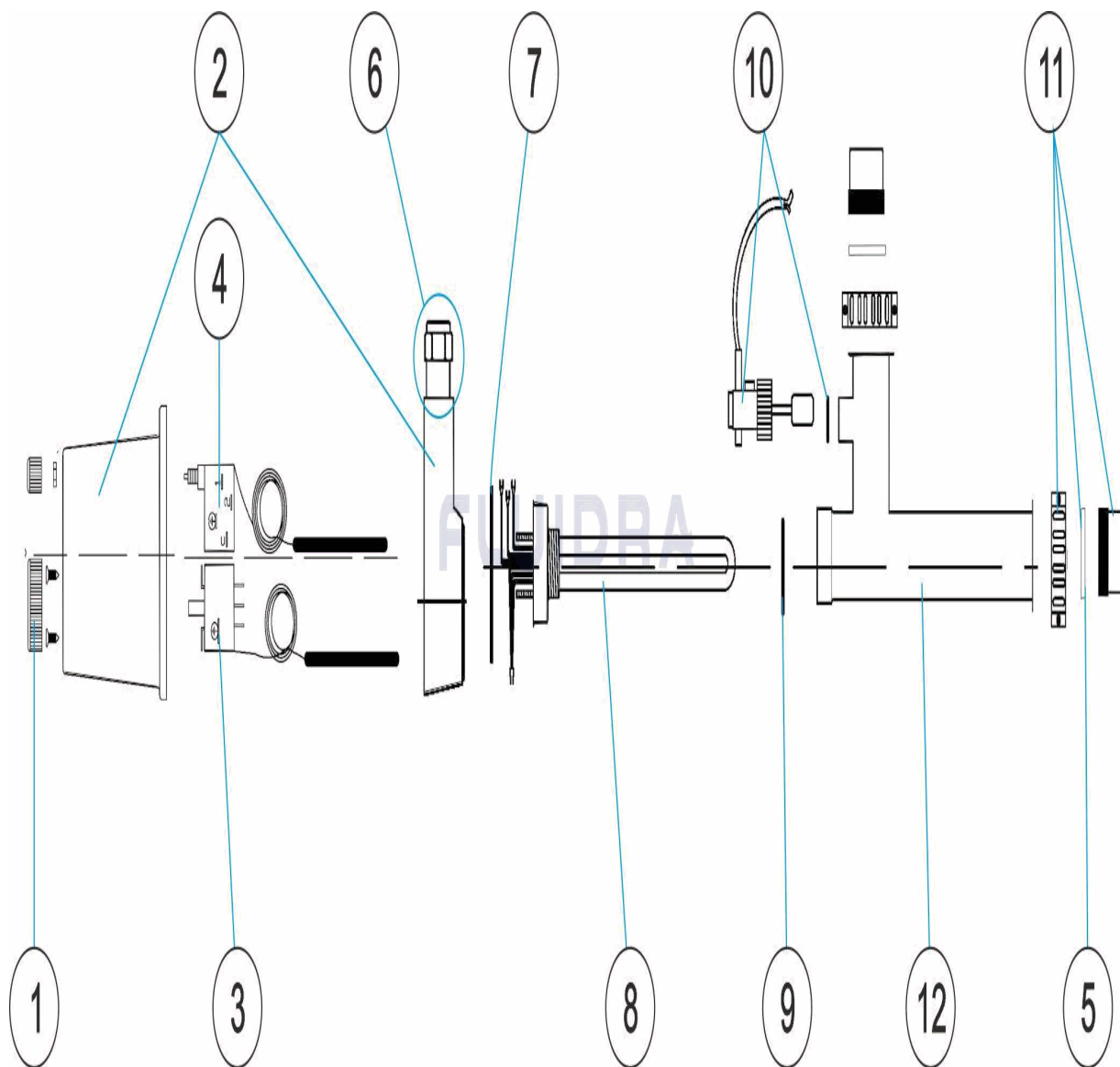
DESCRIPTION: **ÉCHANGEUR ÉCO**

OBSERVATIONS

POS	CODE	OBSERVATIONS
8	* 4407010113	POUR: 27831
8	* 4407010114	POUR: 27832
8	* 4407010115	POUR: 27833
8	* 4407010116	POUR: 27834
8	* 4407010117	POUR: 27835
12	* 08756R0101	POUR: 27831
12	* 08757R0101	POUR: 27832, 27833
12	* 08759R0101	POUR: 27834
12	* 08760R0101	POUR: 27835

CODICE 27831, 27832, 27833, 27834, 27835

DESCRIZIONE: INTERCAMBIATORE ECO



ITALIANO

POS	CODICE	DESCRIZIONE	QUANTITA'	POS	CODICE	DESCRIZIONE	QUANTITA'
1	4407010201	MANOPOLA GRADUATA		8	* 4407010116	RESISTENZA 12 KW	
2	4407010202	SCATOLA IN PVC		8	* 4407010117	RESISTENZA 18 KW	
3	4407010122	TERMOSTATO DI CONTROLLO		9	4407010118	GUARNIZIONE RESISTENZA	
4	4407010121	TERMOSTATO SICUREZZA		10	4407010206	FLUSSOSTATO	
5	4407010203	GUARNIZIONE PIANA		11	4407010108	MANICOTTO	
6	4407010204	GRUPPO PREMISTOPPA		12	* 08756R0101	CORPO INOX (PER 08756)	
7	4407010205	ANELLO DI GIUNTA		12	* 08757R0101	CORPO INOX (PER 08757 E 08758)	
8	* 4407010113	RESISTENZA 3 KW		12	* 08759R0101	CORPO INOX (PER 08759)	
8	* 4407010114	RESISTENZA 6 KW		12	* 08760R0101	CORPO INOX (PER 08760)	
8	* 4407010115	RESISTENZA 9 KW					

CODICE 27831, 27832, 27833, 27834, 27835

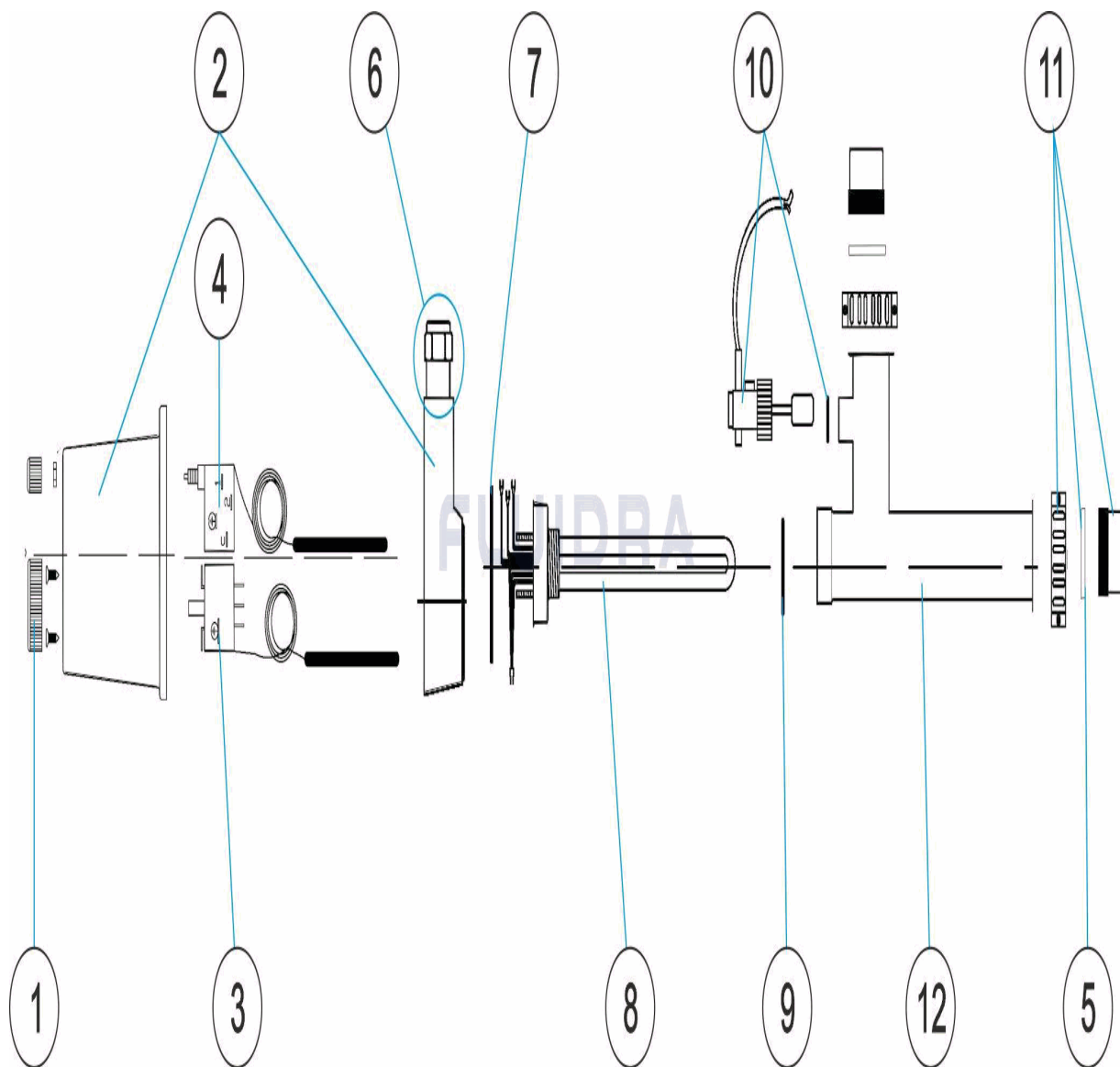
DESCRIZIONE: INTERCAMBIATORE ECO

OSSERVAZIONI

POS	CODICE	OSSERVAZIONI
8	* 4407010113	PER: 27831
8	* 4407010114	PER: 27832
8	* 4407010115	PER: 27833
8	* 4407010116	PER: 27834
8	* 4407010117	PER: 27835
12	* 08756R0101	PER: 27831
12	* 08757R0101	PER: 27832, 27833
12	* 08759R0101	PER: 27834
12	* 08760R0101	PER: 27835

CODIGO 27831, 27832, 27833, 27834, 27835

DESCRIÇÃO: TUBO DE CALOR ECO



PORTUGUES

POS	CODIGO	DESCRIÇÃO	JANTIDADE	POS	CODIGO	DESCRIÇÃO	JANTIDADE
1	4407010201	MANÍPULO GRADUADO		8	* 4407010116	RESISTÊNCIA 12 KW	
2	4407010202	CARÇAÇA PVC		8	* 4407010117	RESISTÊNCIA 18 KW	
3	4407010122	TERMOSTATO DE CONTROLO		9	4407010118	JUNTA RESISTENCIA	
4	4407010121	TERMOSTATO LIMITADOR		10	4407010206	FLUXO-ESTATO	
5	4407010203	JUNTA PLANA		11	4407010108	UNIÃO LIGAÇÃO PERMUTADOR	
6	4407010204	CONJ.CAIXA DE VEDAÇÃO		12	* 08756R0101	CORPO INOX. (PARA 08756)	
7	4407010205	PLACA ESTANQUE JUNTA TÓRICA		12	* 08757R0101	CORPO INOX: (PARA 08757 E 08758)	
8	* 4407010113	RESISTÊNCIA 3 KW		12	* 08759R0101	CORPO INOX. (PARA 08759)	
8	* 4407010114	RESISTÊNCIA 6 KW		12	* 08760R0101	CORPO INOX. (PARA 08760)	
8	* 4407010115	RESISTÊNCIA 9 KW					

CODIGO **27831, 27832, 27833, 27834, 27835**

DESCRIÇÃO: TUBO DE CALOR ECO

OBSERVACÕES

POS	CODIGO	OBSERVACÕES
8	* 4407010113	PARA: 27831
8	* 4407010114	PARA: 27832
8	* 4407010115	PARA: 27833
8	* 4407010116	PARA: 27834
8	* 4407010117	PARA: 27835
12	* 08756R0101	PARA: 27831
12	* 08757R0101	PARA: 27832, 27833
12	* 08759R0101	PARA: 27834
12	* 08760R0101	PARA: 27835