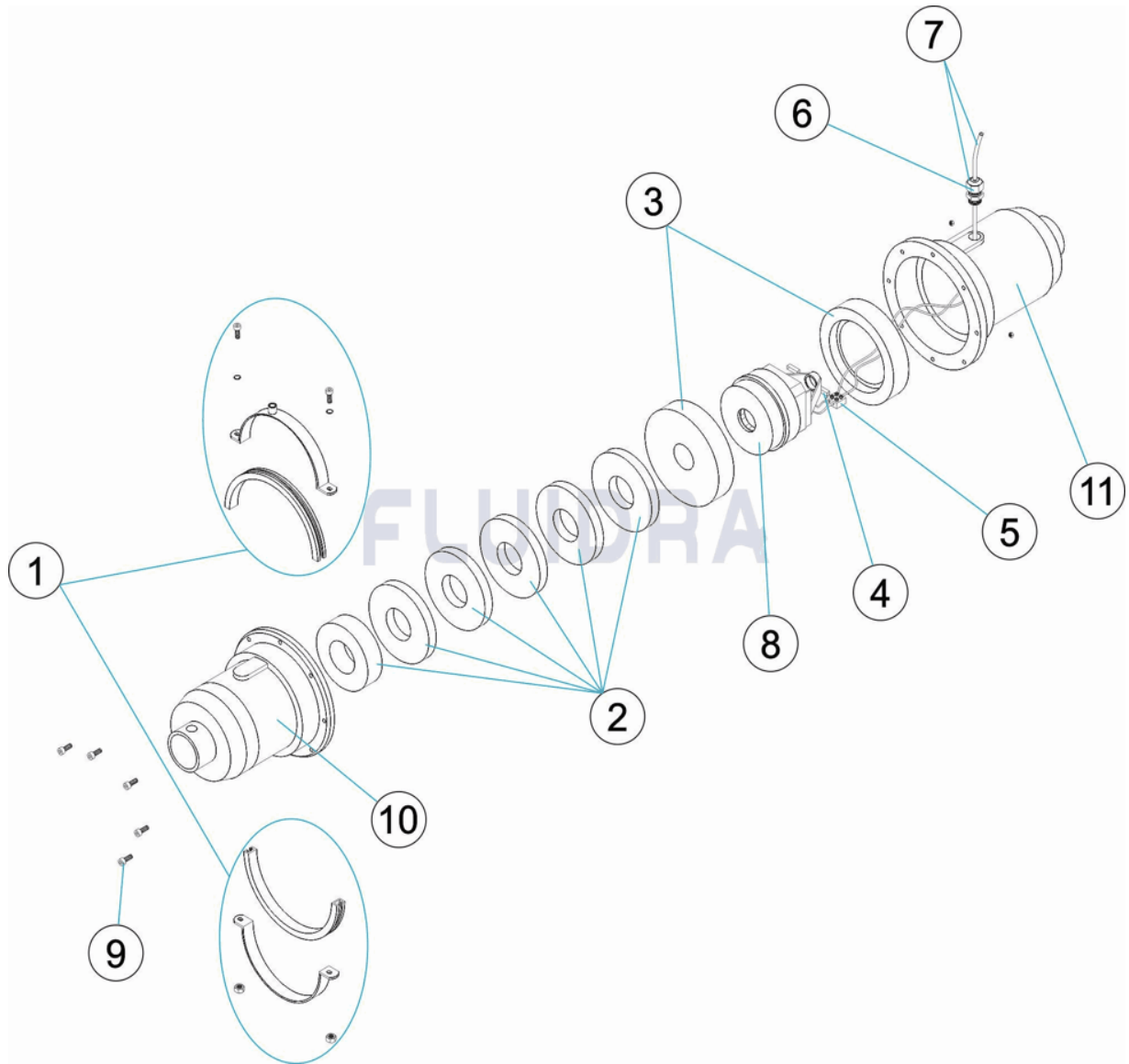


CODIGO **06862, 06863**

DESCRIPCION: **BOMBA DE SOPLADO 1 - 1,5 CV.**



**ESPAÑOL**

POS	CODIGO	DESCRIPCION	CANTIDAD	POS	CODIGO	DESCRIPCION	CANTIDAD
1	4405060101	ABRAZADERA		6	4405060108	PRENSAESTOPAS PG11	
2	4405060102	AROS ESPUMA		7	4405060109	CABLE + PRENSAESTOPAS PG11	
3	* 4405060103	SILENTBLOCK 1 CV		8	* 4405060110	MOTOR 1 CV	
3	* 4405060104	SILENTBLOCK 1,5 CV		8	* 4405060111	MOTOR 1,5 CV	
4	* 4405060105	GRUPO ESCOBILLAS 1 CV.		9	4405060112	CJTO. TORNILLOS FIJACION	
4	* 4405060106	GRUPO ESCOBILLAS 1,5 CV.		10	06862R0002	CUERPO ASPIRACION NEGRO	
5	4405060107	REGLETA CONEXIÓN		11	06862R0001	CUERPO IMPULSION NEGRO	

CODIGO                    **06862, 06863**

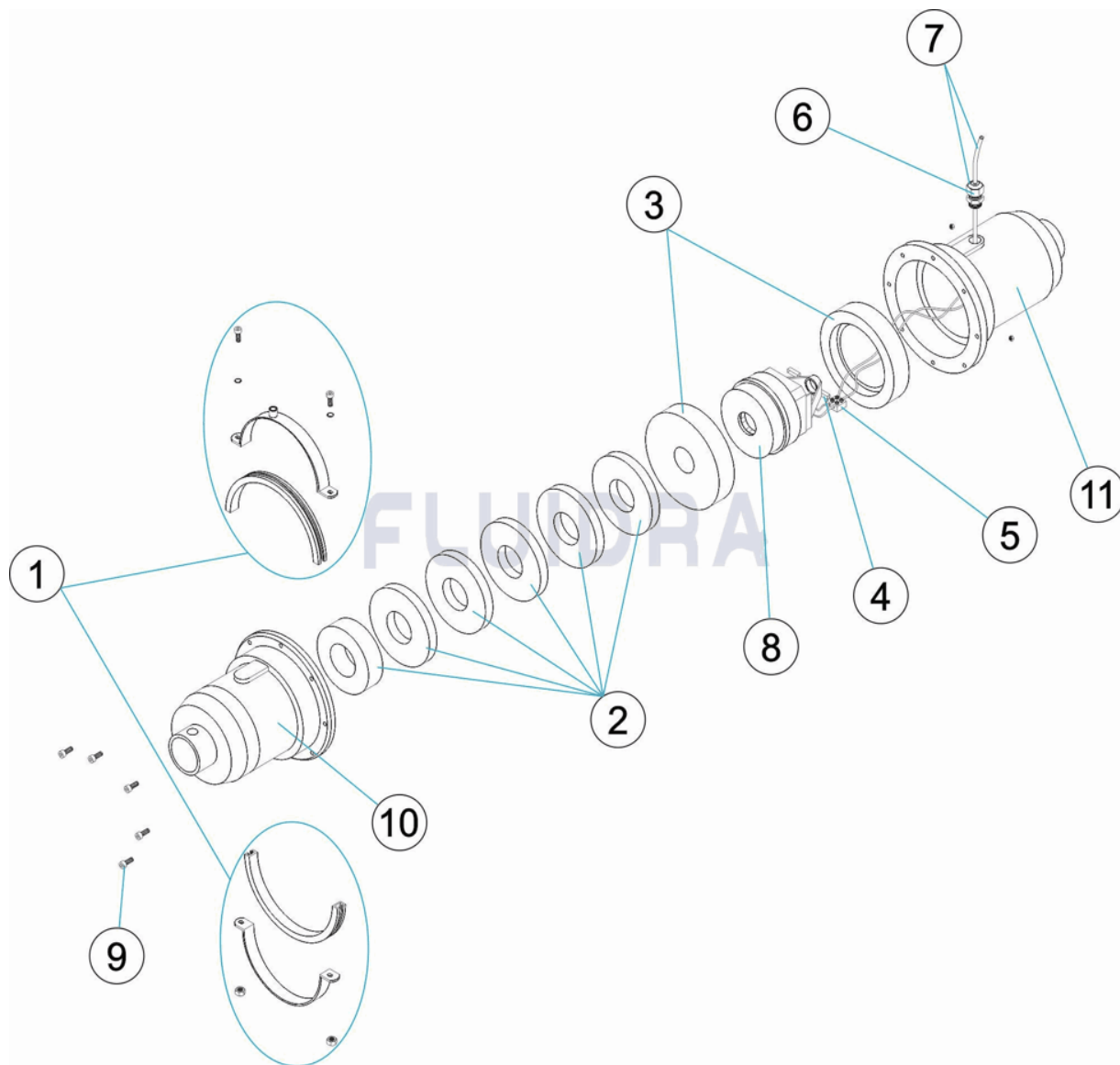
DESCRIPCION: **BOMBA DE SOPLADO 1 - 1,5 CV.**

## OBSERVACIONES

POS	CODIGO	OBSERVACIONES
3	* 4405060103	PARA: 06862
3	* 4405060104	PARA: 06863
4	* 4405060105	PARA: 06862
4	* 4405060106	PARA: 06863
8	* 4405060110	PARA: 06862
8	* 4405060111	PARA: 06863

CODE **06862, 06863**

DESCRIPTION: **POMPE DE SOUFLAGE 1 - 1,5 CV.**



**FRANCAIS**

POS	CODE	DESCRIPTION	QUANTITE	POS	CODE	DESCRIPTION	QUANTITE
1	4405060101	COLLIER		6	4405060108	PRESSE ETOUPE PG-11	
2	4405060102	FILTRES MOUSSE		7	4405060109	CABLE+PRESSE-ETOUPES PG11	
3	* 4405060103	SILENT-BLOCK 1 CV.		8	* 4405060110	MOTEUR 1 CV.	
3	* 4405060104	SILENT-BLOCK 1,5 CV.		8	* 4405060111	MOTEUR 1,5 CV.	
4	* 4405060105	ENSEMBLE CHARBONS 1 CV		9	4405060112	ENSEMBLE VIS FIXATION	
4	* 4405060106	ENSEMBLE CHARBONS 1,5 CV		10	06862R0002	COPRS ASPIRATION NOIR	
5	4405060107	REGLETTE CONNEXION		11	06862R0001	CORPS IMPULSION NOIR	

CODE **06862, 06863**

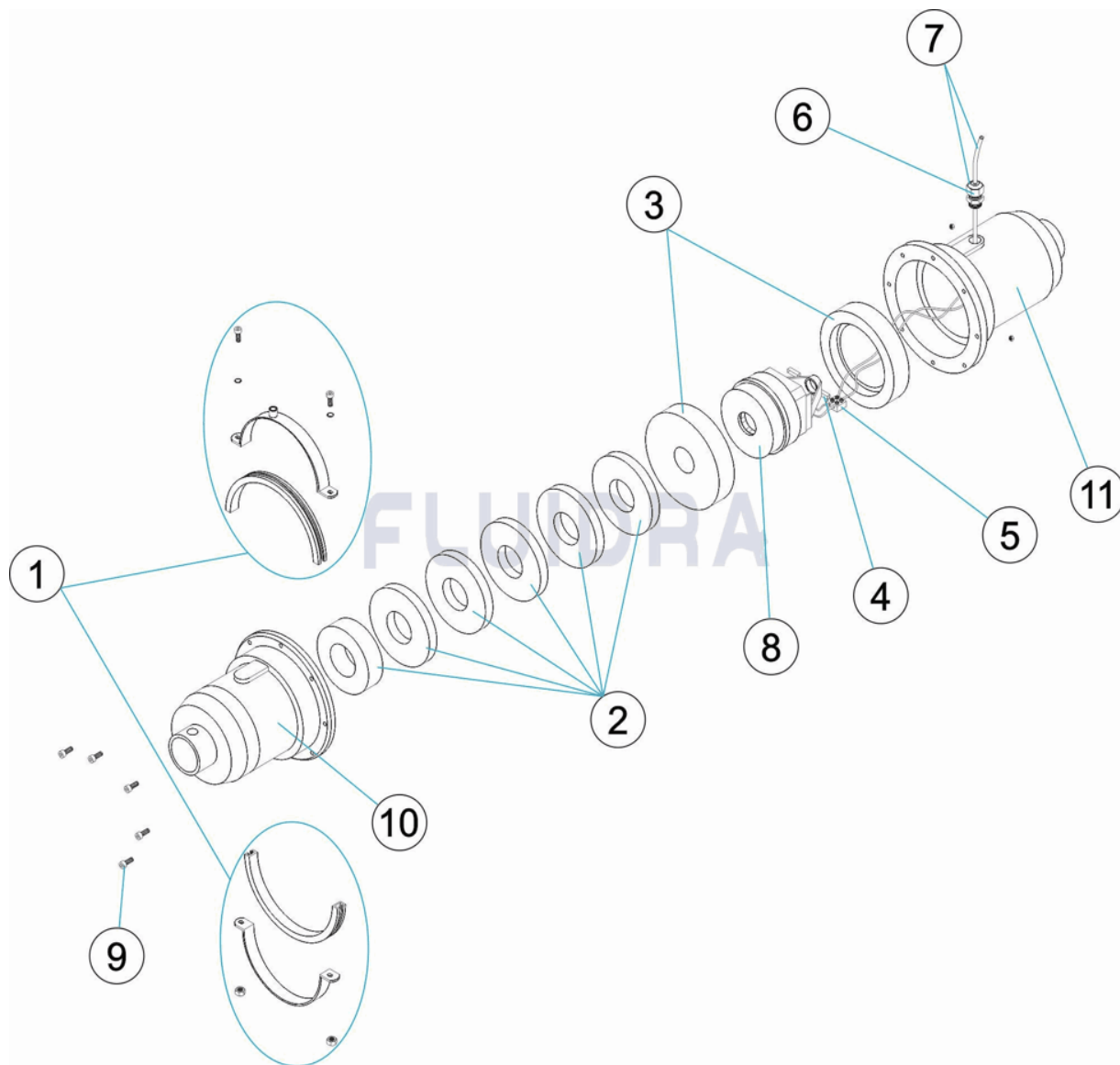
DESCRIPTION: **POMPE DE SOUFFLAGE 1 - 1,5 CV.**

**OBSERVATIONS**

POS	CODE	OBSERVATIONS
3	* 4405060103	POUR: 06862
3	* 4405060104	POUR: 06863
4	* 4405060105	POUR: 06862
4	* 4405060106	POUR: 06863
8	* 4405060110	POUR: 06862
8	* 4405060111	POUR: 06863

CODE **06862, 06863**

DESCRIPTION: **FAN PUMP 1 - 1.5 CV.**



**ENGLISH**

POS	CODE	DESCRIPTION	QUANTITY	POS	CODE	DESCRIPTION	QUANTITY
1	4405060101	CLAMP		6	4405060108	PACKING GLAND PG-11	
2	4405060102	FFOAM RINGS		7	4405060109	CABLE+PACKING GLAND PG11	
3	* 4405060103	SILENTBLOCK 1 CV.		8	* 4405060110	MOTOR 1 CV	
3	* 4405060104	SILENTBLOCK 1,5 CV.		8	* 4405060111	MOTOR 1,5 CV	
4	* 4405060105	BRUSH GROUP 1 HP		9	4405060112	KIT FIXING SCREWS	
4	* 4405060106	BRUSH GROUP 1,5 HP		10	06862R0002	BLACK INLET BODY	
5	4405060107	CONNECTION GRID		11	06862R0001	BLACK OUTLET BODY	

CODE                    **06862, 06863**

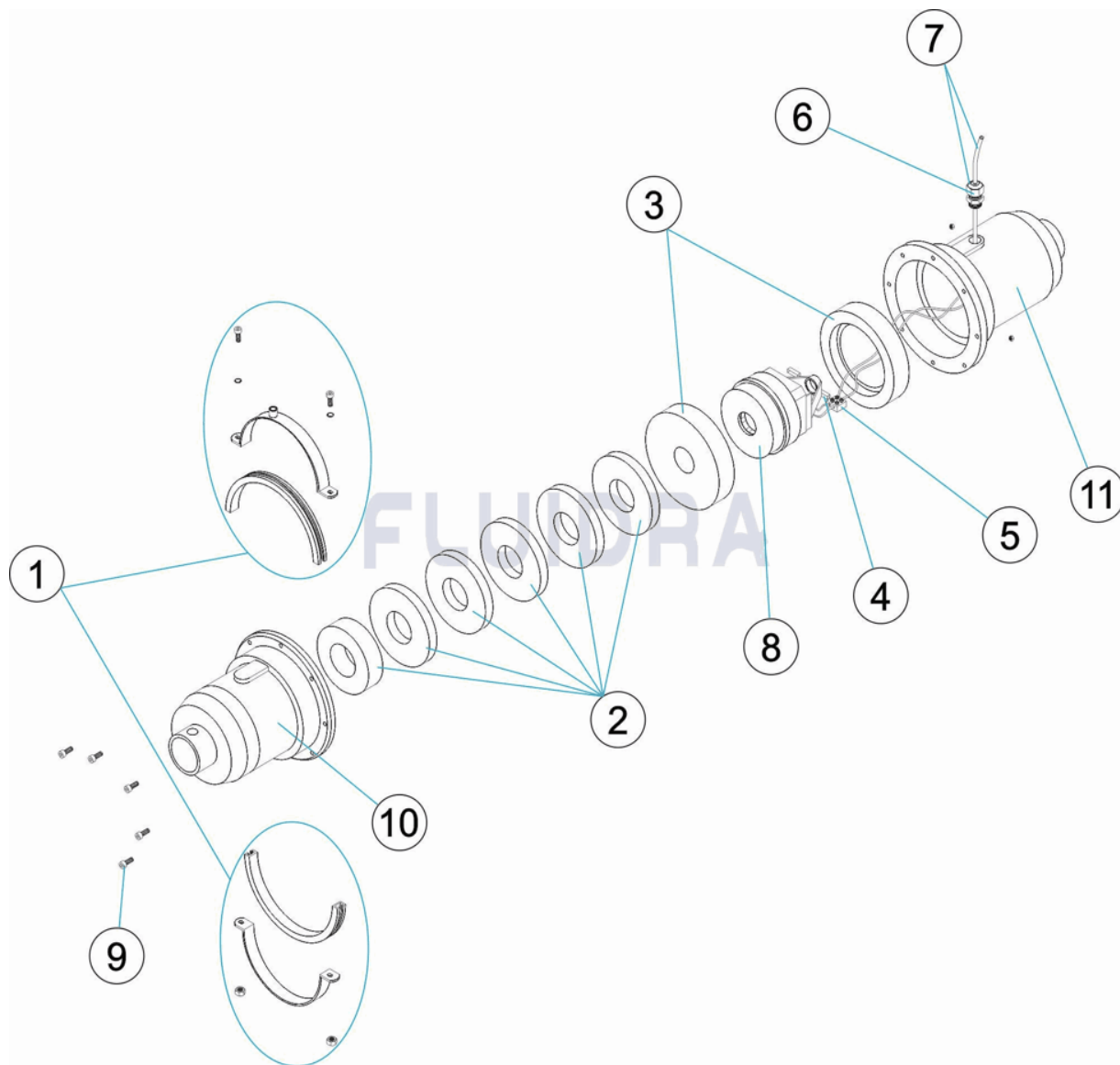
DESCRIPTION: **FAN PUMP 1 - 1.5 CV.**

**OBSERVATIONS**

POS	CODE	OBSERVATIONS
3	* 4405060103	FOR: 06862
3	* 4405060104	FOR: 06863
4	* 4405060105	FOR: 06862
4	* 4405060106	FOR: 06863
8	* 4405060110	FOR: 06862
8	* 4405060111	FOR: 06863

CODICE **06862, 06863**

DESCRIZIONE: **POMPA DI SOFFIAGGIO 1 - 1,5 CV**



**ITALIANO**

POS	CODICE	DESCRIZIONE	QUANTITA'	POS	CODICE	DESCRIZIONE	QUANTITA'
1	4405060101	FASCETTA		6	4405060108	PRESSACAPO PG-11	
2	4405060102	ANELLO SCHIUMA		7	4405060109	CAVO + PRESSACAPO PG11	
3	* 4405060103	SILENTBLOC 1 CV		8	* 4405060110	MOTORE 1 CV.	
3	* 4405060104	SILENTBLOC 1,5 CV.		8	* 4405060111	MOTORE 1,5 CV.	
4	* 4405060105	GRUPPO SPAZZOLE 1 CV		9	4405060112	KIT VITI FISSAGGIO	
4	* 4405060106	GRUPPO SPAZZOLE 1,5 CV		10	06862R0002	CORPO ASPIRAZIONE NERO	
5	4405060107	MORSETTI CONNESSIONE		11	06862R0001	CORPO MANDATA NERO	

**CODICE 06862, 06863**

**DESCRIZIONE: POMPA DI SOFFIAGGIO 1 - 1,5 CV**

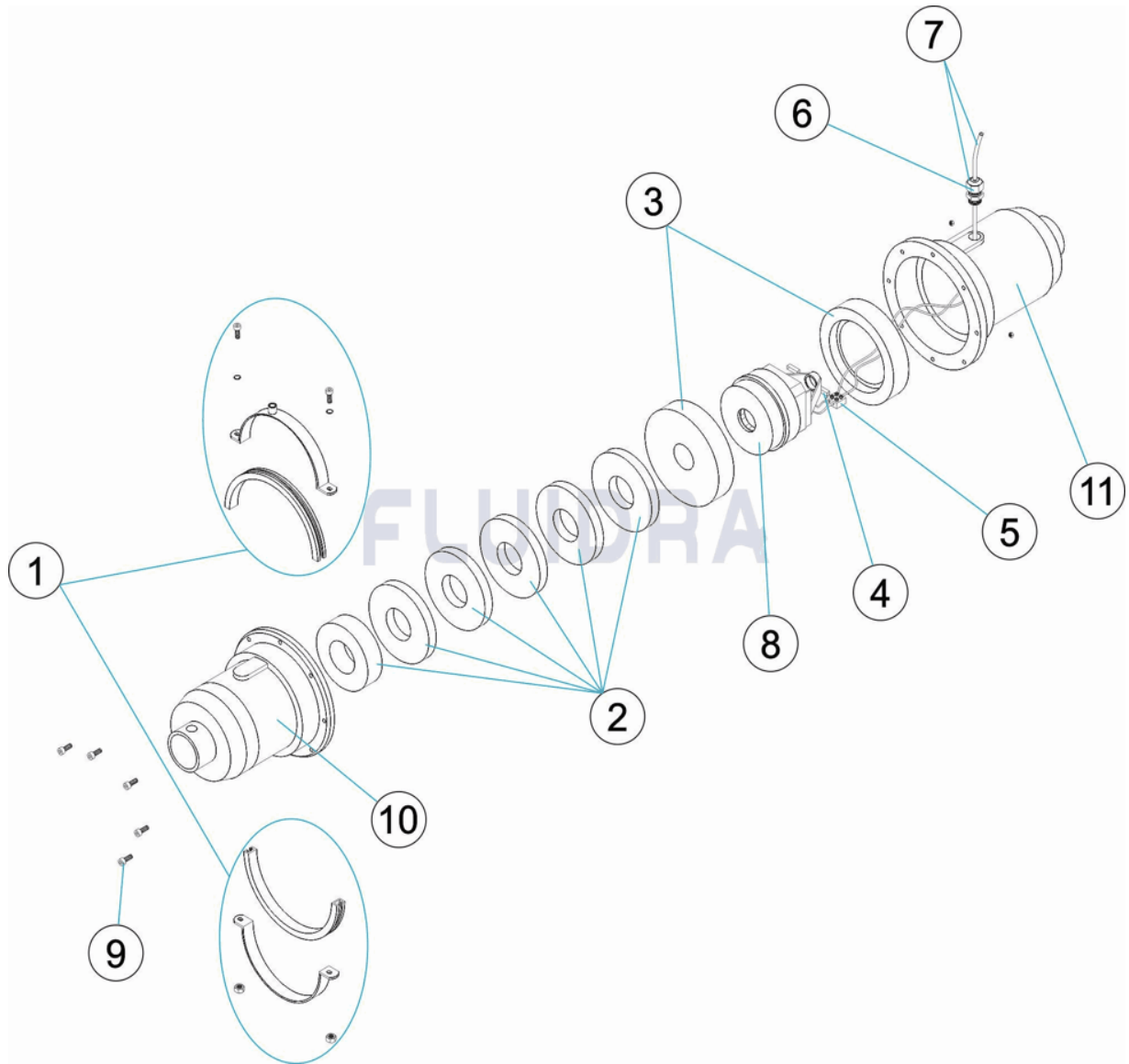
**OSSERVAZIONI**

POS	CODICE	OSSERVAZIONI
3	* 4405060103	PER: 06862
3	* 4405060104	PER: 06863
4	* 4405060105	PER: 06862
4	* 4405060106	PER: 06863
8	* 4405060110	PER: 06862
8	* 4405060111	PER: 06863



CODE **06862, 06863**

BESCHREIBUNG: **GEBLÄSEPUMPE 1 - 1,5 CV.**



**DEUTSCH**

POS	CODE	BESCHREIBUNG	MENGE	POS	CODE	BESCHREIBUNG	MENGE
1	4405060101	SHELLE		6	4405060108	QUETSCHVERSCHRAUBUNG PG11	
2	4405060102	RINGE SCHAUMSTOFF		7	4405060109	KABEL MIT QUETSCHVERSCHRAUBUNG P1	
3	* 4405060103	SCHWINGUNGSDÄMPFER 1 CV		8	* 4405060110	MOTOR 1 CV	
3	* 4405060104	SCHWINGUNGSDÄMPFER 1,5 CV		8	* 4405060111	MOTOR 1,5 CV	
4	* 4405060105	BÜRSTENGRUPPE 1 CV		9	4405060112	SET FIXIERSCHRAUBEN	
4	* 4405060106	BÜRSTENGRUPPE 1,5 CV		10	06862R0002	SAUGGEHÄUSE SCHWARZ	
5	4405060107	KLEMMLEISTE		11	06862R0001	GEHÄUSE EINLAUF SCHWARZ	

CODE **06862, 06863**

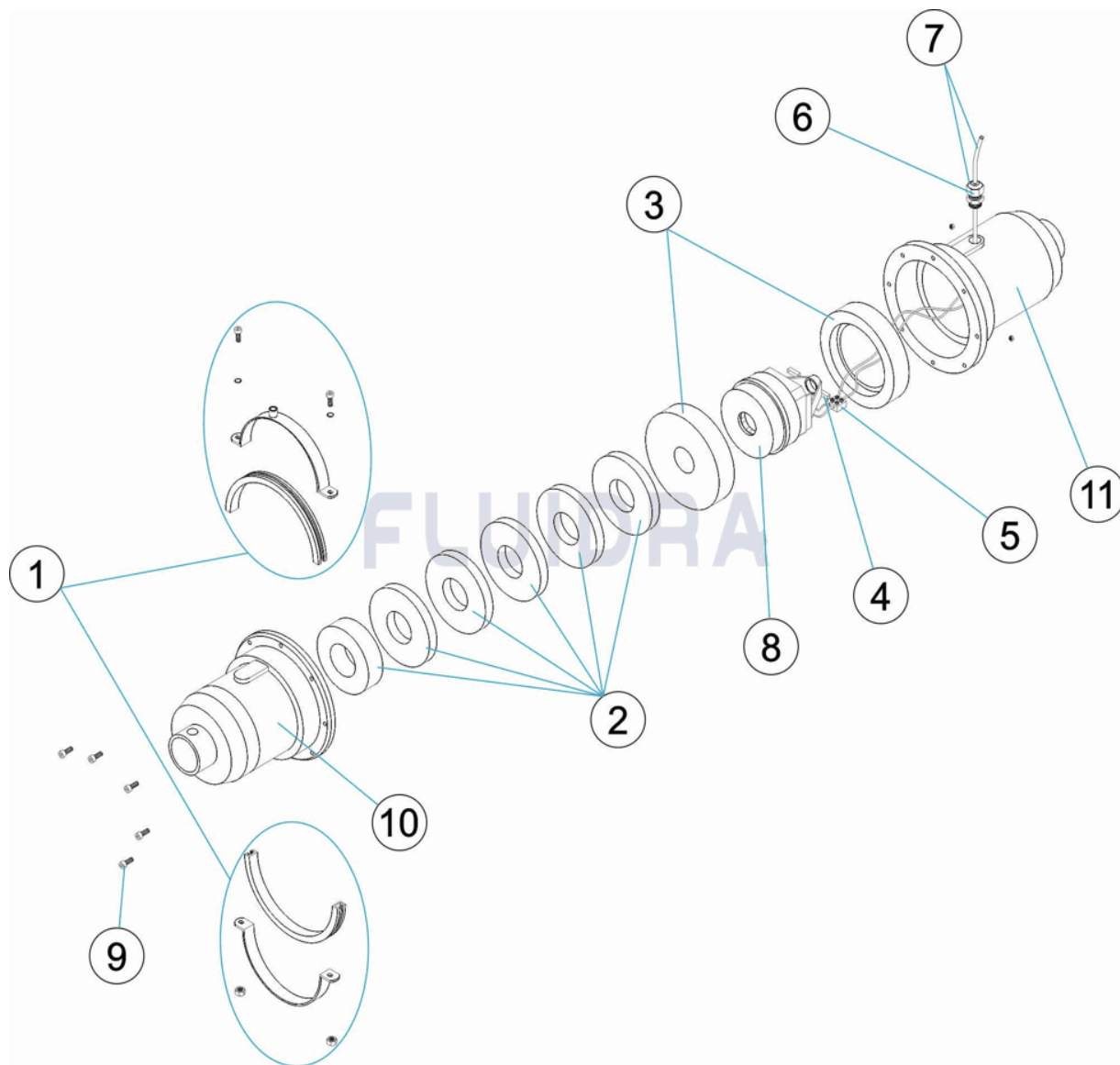
BESCHREIBUNG: **GEBLÄSEPUMPE 1 - 1,5 CV.**

**HINWEISE**

POS	CODE	HINWEISE
3	* 4405060103	FÜR: 06862
3	* 4405060104	FÜR: 06863
4	* 4405060105	FÜR: 06862
4	* 4405060106	FÜR: 06863
8	* 4405060110	FÜR: 06862
8	* 4405060111	FÜR: 06863

CODIGO **06862, 06863**

DESCRICAÇÃO: **BOMBA DE INSUFLAÇÃO 1 - 1,5 CV.**



**PORTUGUES**

POS	CODIGO	DESCRICAÇÃO	JANTIDADE	POS	CODIGO	DESCRICAÇÃO	JANTIDADE
1	4405060101	ABRAÇADEIRA		6	4405060108	BUCIN PG-11	
2	4405060102	ARO DO CORPO		7	4405060109	CABO + BUCIN PG11	
3	* 4405060103	SILENT-BLOCK 1 CV.		8	* 4405060110	MOTOR 1 CV.	
3	* 4405060104	SILENT-BLOCK 1,5 CV.		8	* 4405060111	MOTOR 1,5 CV.	
4	* 4405060105	GRUPO DE ESCOVAS 1 CV		9	4405060112	CONJ.PARAFUSOS DE FIXAÇÃO	
4	* 4405060106	GRUPO DE ESCOVAS 1,5 CV		10	06862R0002	CORPO ASPIRAÇÃO PRETO	
5	4405060107	REGUA DE LIGAÇÃO		11	06862R0001	CUERPO IMPULSION PRETO	

CODIGO                    **06862, 06863**

DESCRIÇÃO: **BOMBA DE INSUFLAÇÃO 1 - 1,5 CV.**

## OBSERVACÕES

POS	CODIGO	OBSERVACÕES
3	* 4405060103	PARA: 06862
3	* 4405060104	PARA: 06863
4	* 4405060105	PARA: 06862
4	* 4405060106	PARA: 06863
8	* 4405060110	PARA: 06862
8	* 4405060111	PARA: 06863