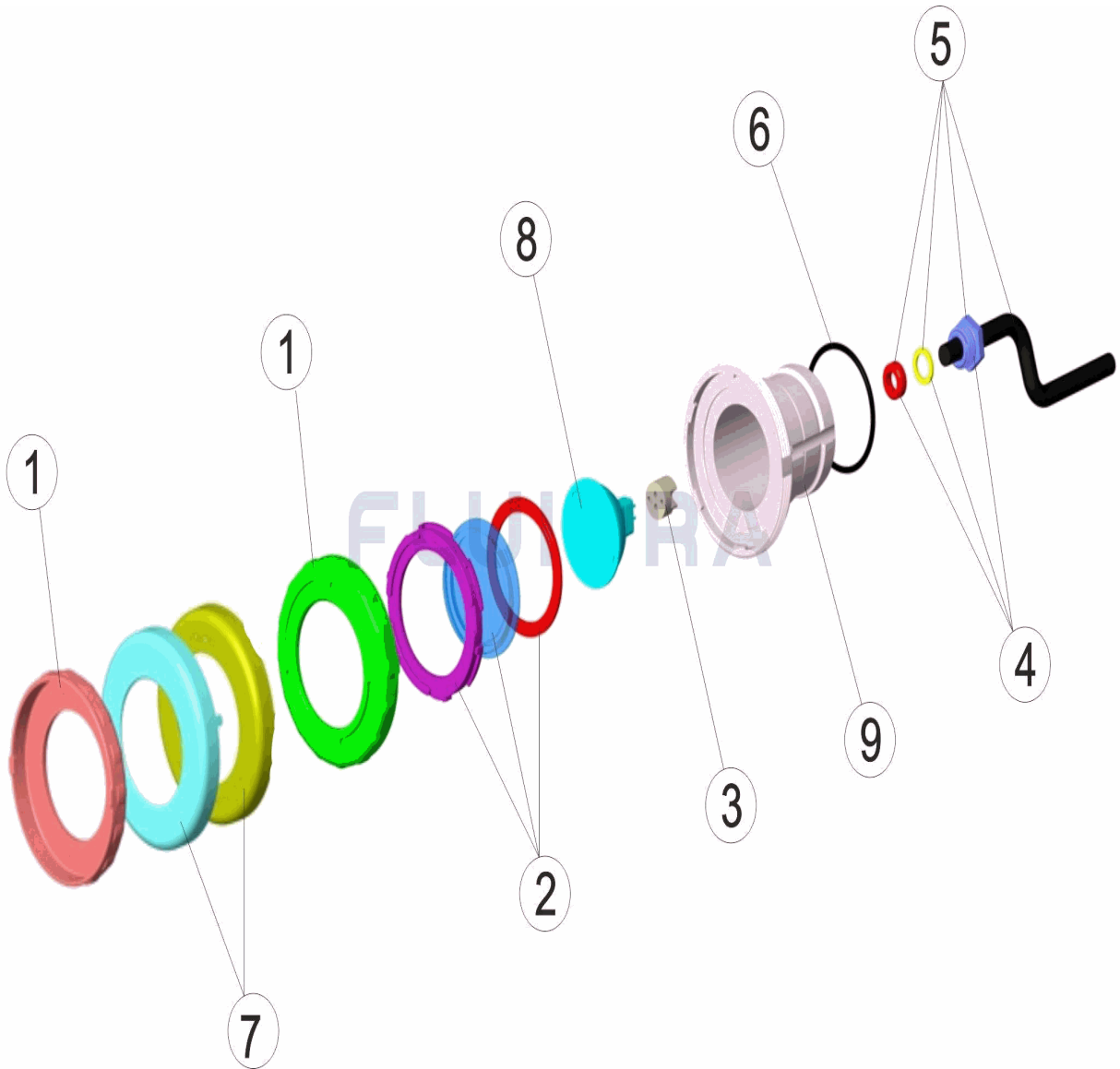


CODE **33708, 36646**

BESCHREIBUNG: **UWS MINI BLENDE WEISS/EDELSTAHL/SCHNELLVERANKERUNG**



DEUTSCH

POS	CODE	BESCHREIBUNG	MENGE	POS	CODE	BESCHREIBUNG	MENGE
1	* 4403012101	BLLENDE KALTLICHT		6	4403011406	O-RING UWS	
2	4403012003	LINSE KOMPLETT		7	* 4403014801	BLLENDE MINI-UWS EDELSTAHL	
3	4403011407	LAMPENFASSUNG		8	4403010074	LAMPE HALOGEN ALUMINUM	
4	4403010107	QUETSCHVERSCHRAUBUNG		9	33708R0001	GEHÄUSE UWS	
5	4403014103	MINI UWS-KABEL 2 X 1,5 X 250					

CODE **33708, 36646**

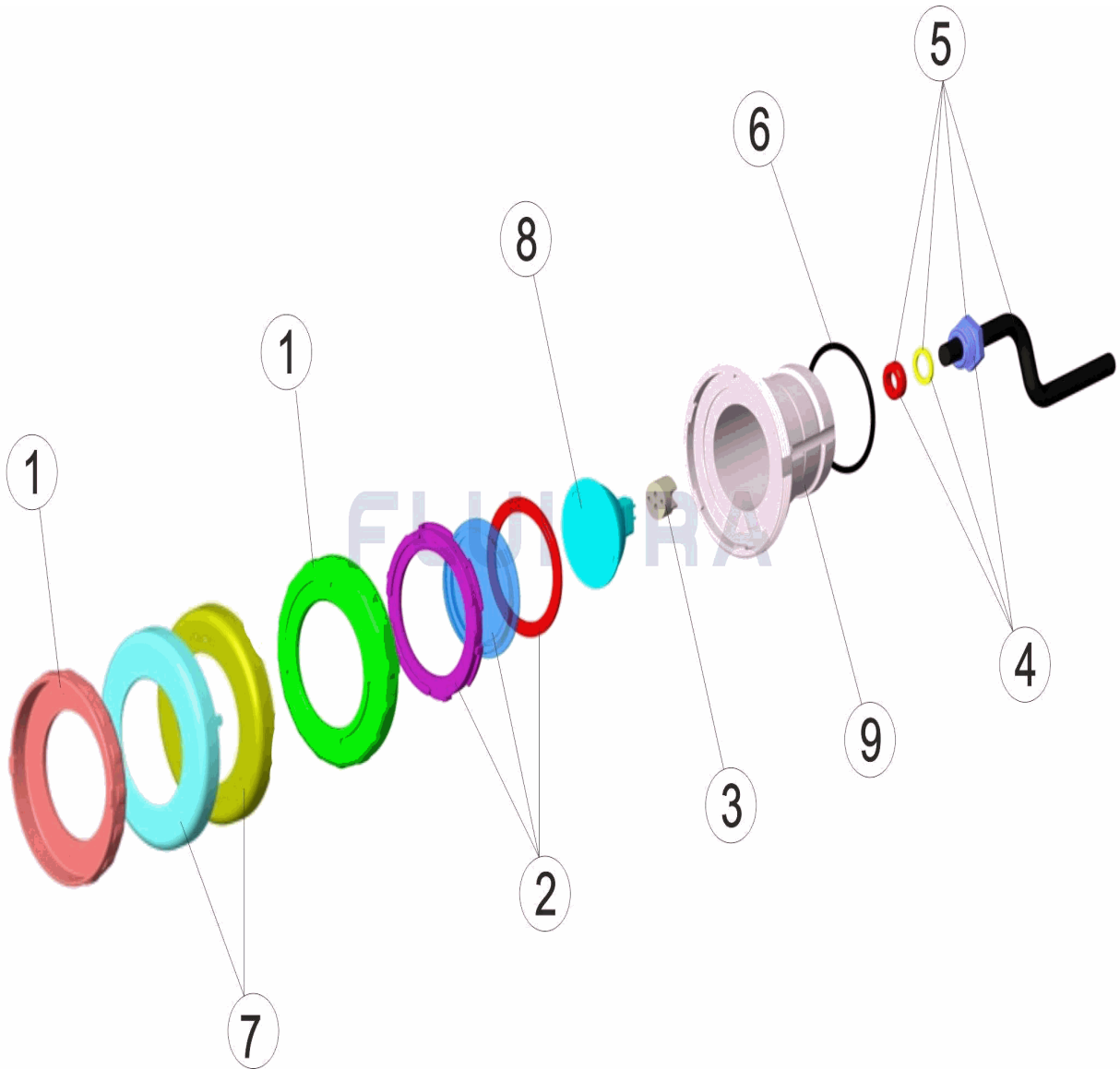
BESCHREIBUNG: **UWS MINI BLENDE WEISS/EDELSTAHL/SCHNELLVERANKERUNG**

HINWEISE

POS	CODE	HINWEISE
1	* 4403012101	FÜR: 33708
7	* 4403014801	FÜR: 36646

CODE **33708, 36646**

DESCRIPTION: **MINI LIGHT EMB. WHITE / STAINLESS STEEL / FAST ANCHORING**



ENGLISH

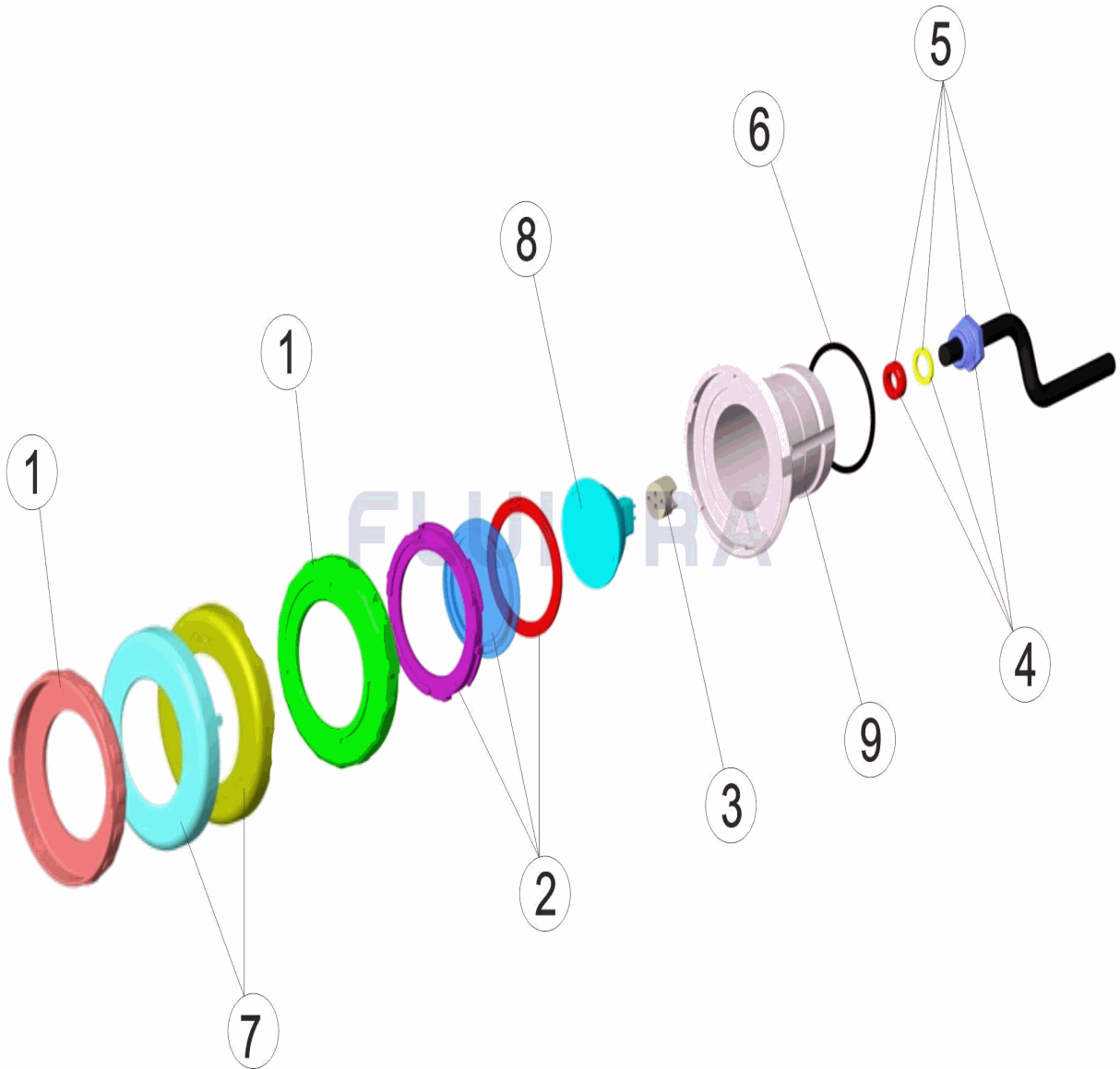
POS	CODE	DESCRIPTION	QUANTITY	POS	CODE	DESCRIPTION	QUANTITY
1	* 4403012101	DICHO FACEPLATE		6	4403011406	LIGHT O RING	
2	4403012003	LENS KIT		7	* 4403014801	S. S. LIGHT FACEPLATE MINI	
3	4403011407	LAMP HOLDER		8	4403010074	LAMP HALOGEN ALUMINIZED	
4	4403010107	LIGHT PACKING GLAND		9	33708R0001	LAMP BODY PLASTIC	
5	4403014103	CABLE UWL MINI 2X1,5X250					

CODE **33708, 36646**DESCRIPTION: **MINI LIGHT EMB. WHITE / STAINLESS STEEL / FAST ANCHORING****OBSERVATIONS**

POS	CODE	OBSERVATIONS
1	* 4403012101	FOR: 33708
7	* 4403014801	FOR: 36646

CODIGO **33708, 36646**

DESCRIPCION: **PROYECTOR MINI EMB. BLANCO/INOX/ANCLAJE RAPIDO**



ESPAÑOL

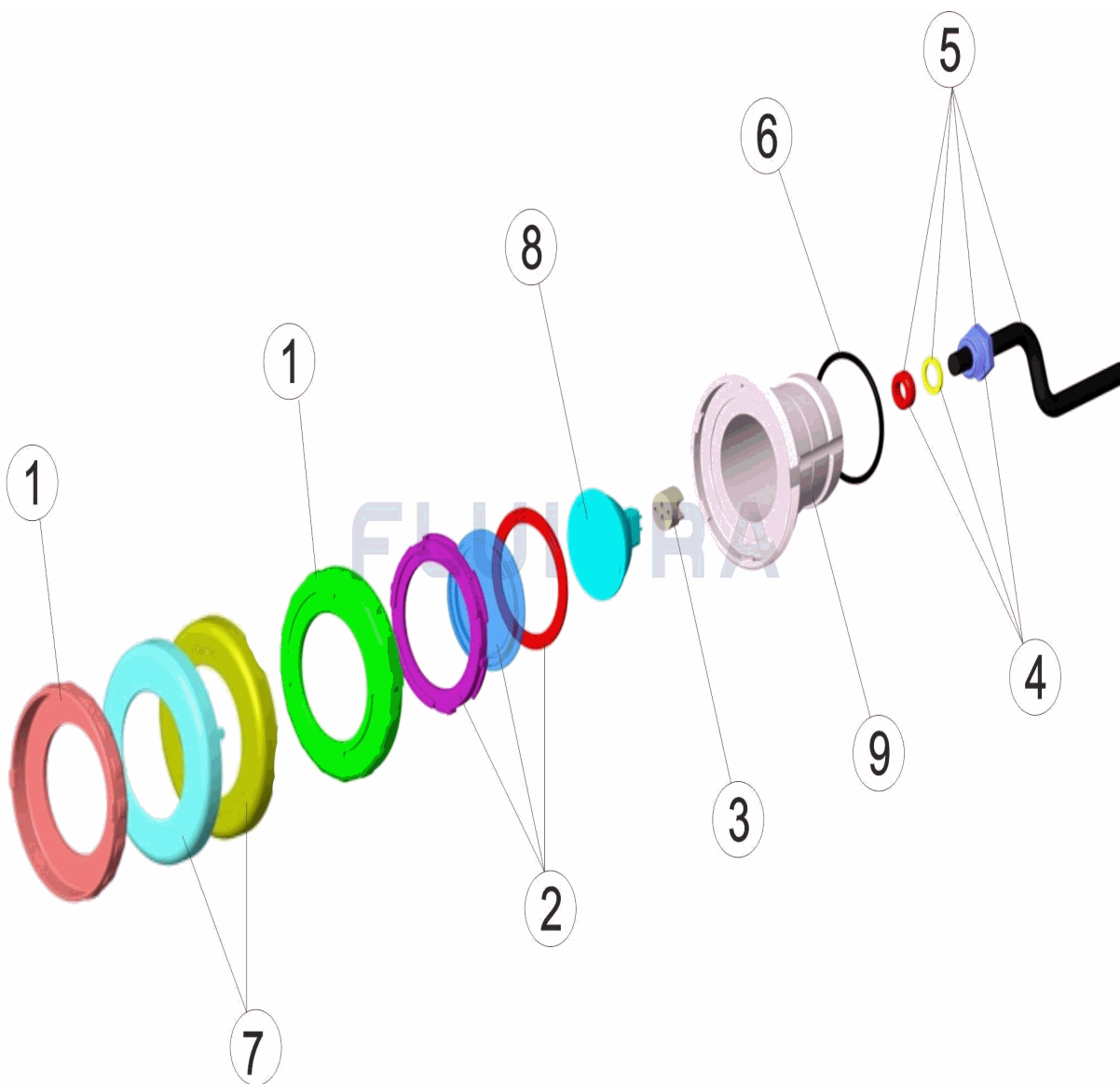
POS	CODIGO	DESCRIPCION	CANTIDAD	POS	CODIGO	DESCRIPCION	CANTIDAD
1	* 4403012101	EMBELLECEDOR DICROICO		6	4403011406	JUNTA TORICA PROYECTOR	
2	4403012003	LENTE COMPLETA		7	* 4403014801	EMBELLECEDOR PROYECTOR MINI INOX.	
3	4403011407	PORTALAMPARAS		8	4403010074	LAMPARA HALOGENA ALUMINIZADA	
4	4403010107	PRENSAESTOPAS PANTALLA		9	33708R0001	CUERPO PROYECTOR	
5	4403014103	CABLE PROYECTOR MINI 2X1,5X250					

CODIGO **33708, 36646**DESCRIPCION: **PROYECTOR MINI EMB. BLANCO/INOX/ANCLAJE RAPIDO****OBSERVACIONES**

POS	CODIGO	OBSERVACIONES
1	* 4403012101	PARA: 33708
7	* 4403014801	PARA: 36646

CODE **33708, 36646**

DESCRIPTION: **PROJECTEUR MINI ENJ. BLANC/INOX/FIXATION RAPIDE**



FRANCAIS

POS	CODE	DESCRIPTION	QUANTITE	POS	CODE	DESCRIPTION	QUANTITE
1	* 4403012101	ENJOLIVEUR ET OPTIQUE		6	4403011406	JOINT TORIQUE PROJECTEUR	
2	4403012003	LENTILLE COMPLETE		7	* 4403014801	ENJOLIVEUR DE PROJECTEUR MINI INOX.	
3	4403011407	PORTE-LAMPE		8	4403010074	LAMPE HALOGENE ALUMINISE	
4	4403010107	PRESSE-ETOUPE		9	33708R0001	CORPS DU PROJECTEUR	
5	4403014103	CABLE PROJECTEUR MINI 2X1,5X250					

CODE **33708, 36646**

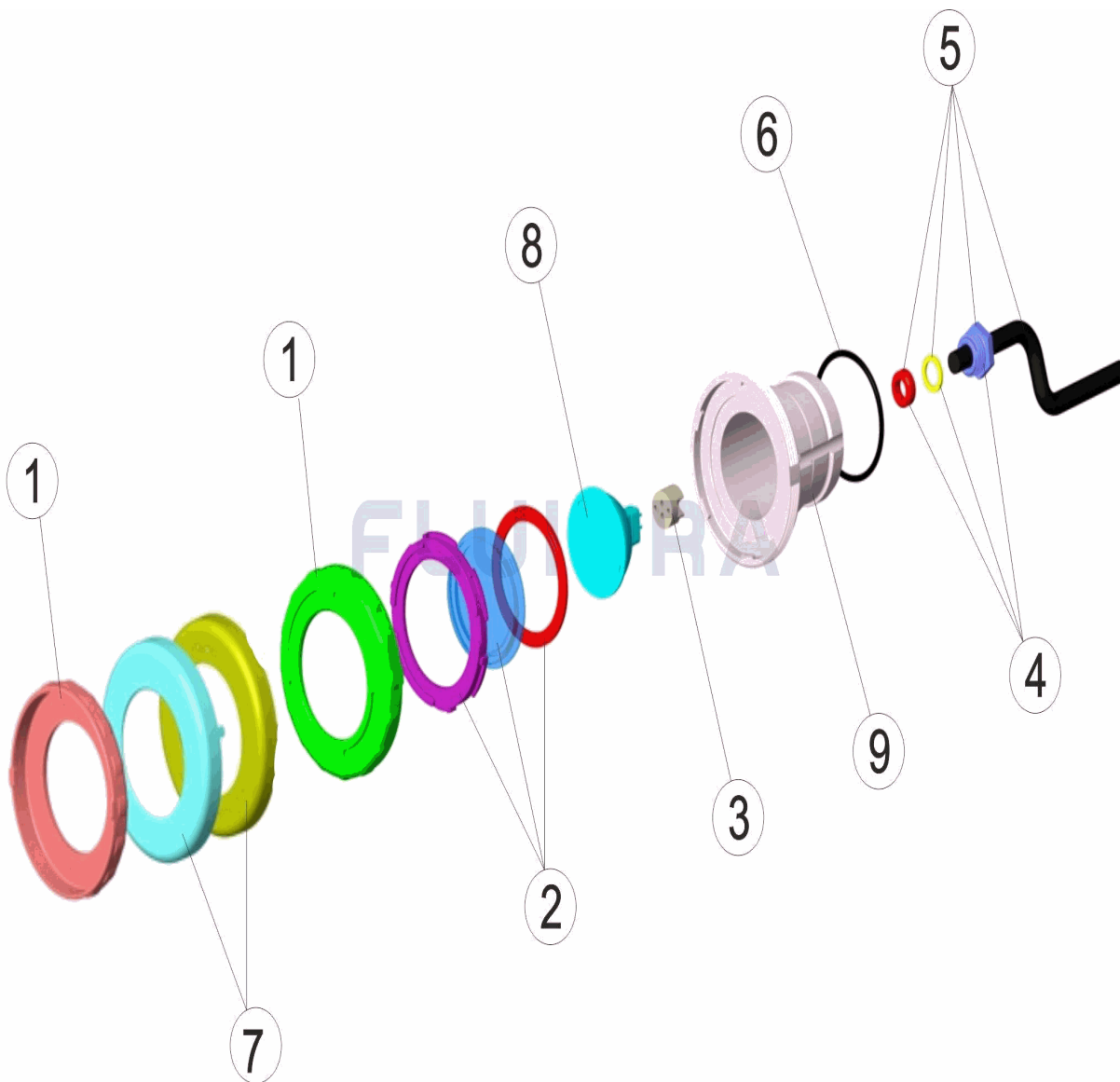
DESCRIPTION: **PROJECTEUR MINI ENJ. BLANC/INOX/FIXATION RAPIDE**

OBSERVATIONS

POS	CODE	OBSERVATIONS
1	* 4403012101	POUR: 33708
7	* 4403014801	POUR: 36646

CODICE **33708, 36646**

DESCRIZIONE: **PROIETTORE MINI PLACCA BIANCA/INOX ANCORAGGIO RAPIDO**



ITALIANO

POS	CODICE	DESCRIZIONE	QUANTITA'	POS	CODICE	DESCRIZIONE	QUANTITA'
1	* 4403012101	FLANGIA FARO DICROICO		6	4403011406	O-RING FARO	
2	4403012003	LENTE COMPLETA		7	* 4403014801	ANELLO FRONTALE FARO MINI INOX.	
3	4403011407	PORTALAMPADE		8	4403010074	LAMPADA ALOGENA ALLUMINATO	
4	4403010107	PRESSACAVI SCHERMO		9	33708R0001	CORPO PROIETTORE	
5	4403014103	CAVO 2X1,5X250 FARO MINI					

CODICE **33708, 36646**

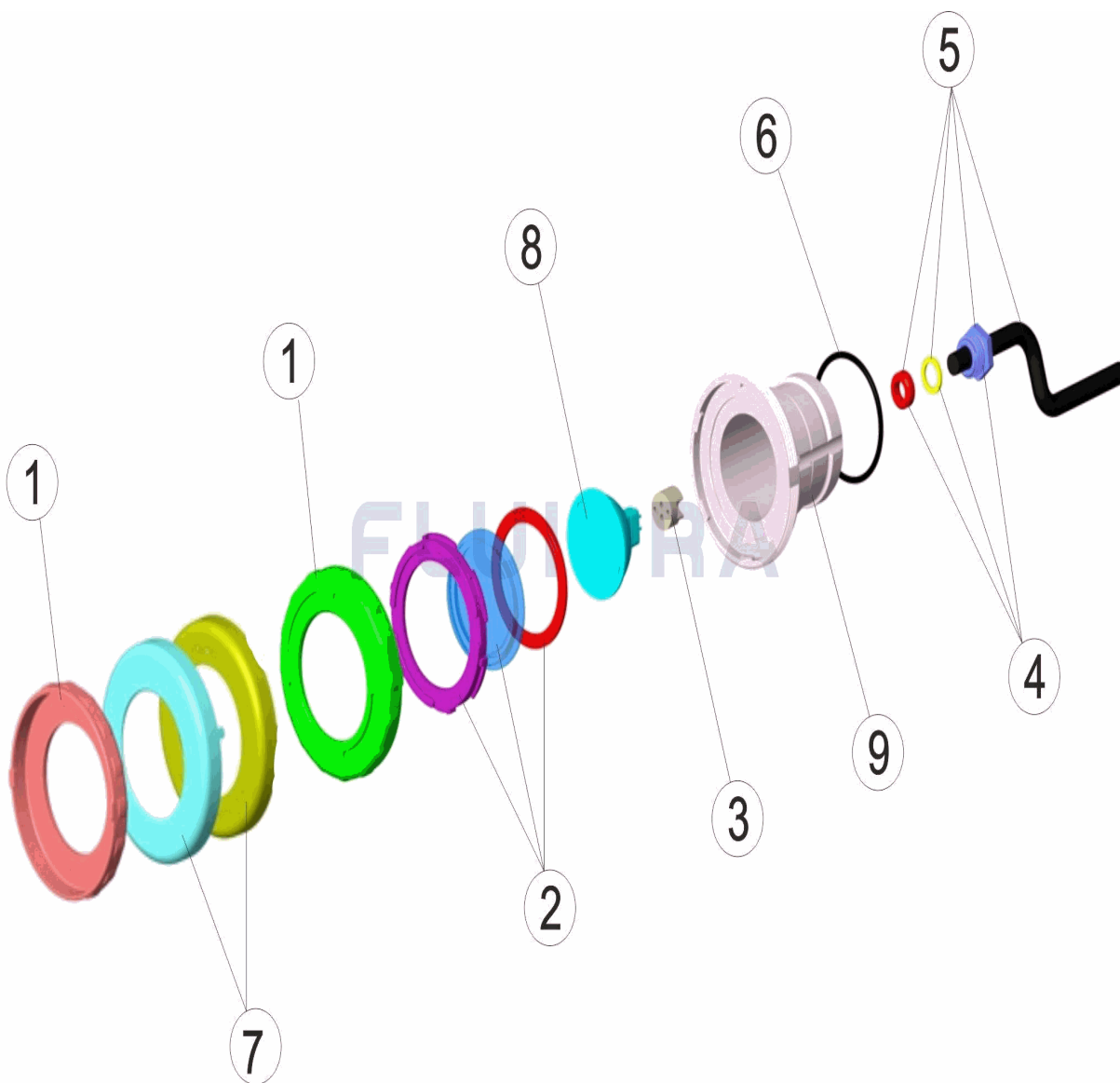
DESCRIZIONE: **PROIETTORE MINI PLACCA BIANCA/INOX ANCORAGGIO RAPIDO**

OSSERVAZIONI

POS	CODICE	OSSERVAZIONI
1	* 4403012101	PER: 33708
7	* 4403014801	PER: 36646

CODIGO **33708, 36646**

DESCRIÇÃO: **PROJECTOR MINI P. DEC. BRANCO/INOX/ANCORAGEM RÁPIDA**



PORTUGUES

POS	CODIGO	DESCRIÇÃO	JANTIDADE	POS	CODIGO	DESCRIÇÃO	JANTIDADE
1	* 4403012101	EMBELEZADOR DICROICO		6	4403011406	JUNTA TÓRICA PROJECTOR	
2	4403012003	LENTE COMPLETA		7	* 4403014801	EMBELEZADOR PROJECTOR MINI INOX.	
3	4403011407	PORTA-LÂMPADA		8	4403010074	LÂMPADA HALÓGENA ALUMINIZADA	
4	4403010107	BUCIN LENTE		9	33708R0001	CORPO PROJECTOR	
5	4403014103	CABO PROJECTOR MINI 2X1,5X250					

CODIGO **33708, 36646**DESCRIÇÃO: **PROJECTOR MINI P. DEC. BRANCO/INOX/ANCORAGEM RÁPIDA****OBSERVACÕES**

POS	CODIGO	OBSERVACÕES
1	* 4403012101	PARA: 33708
7	* 4403014801	PARA: 36646