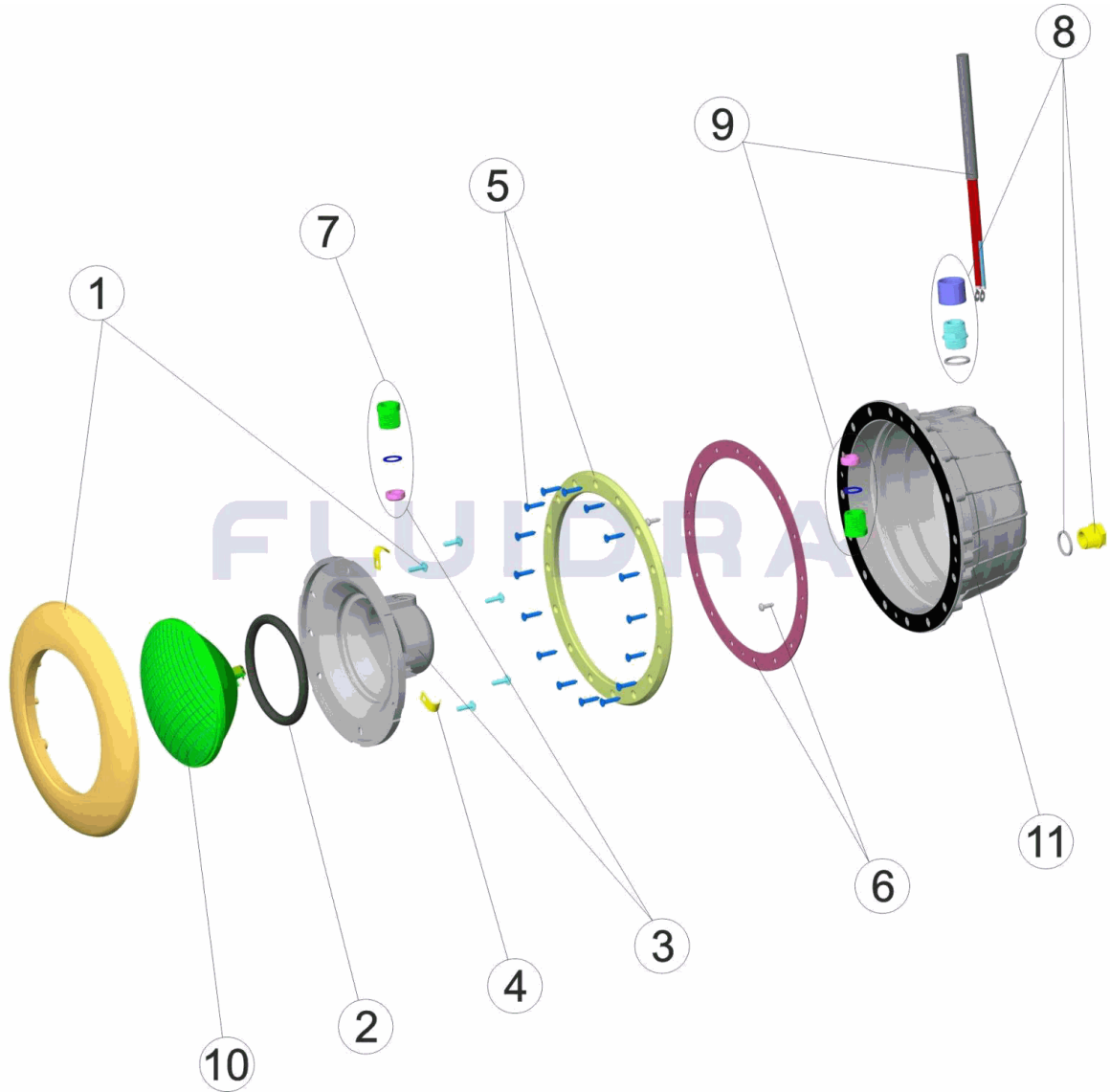


CODIGO **34409**

DESCRIPCION: **PROYECTOR ESTÁNDAR PP./ PISCINAS EASY-LINE**

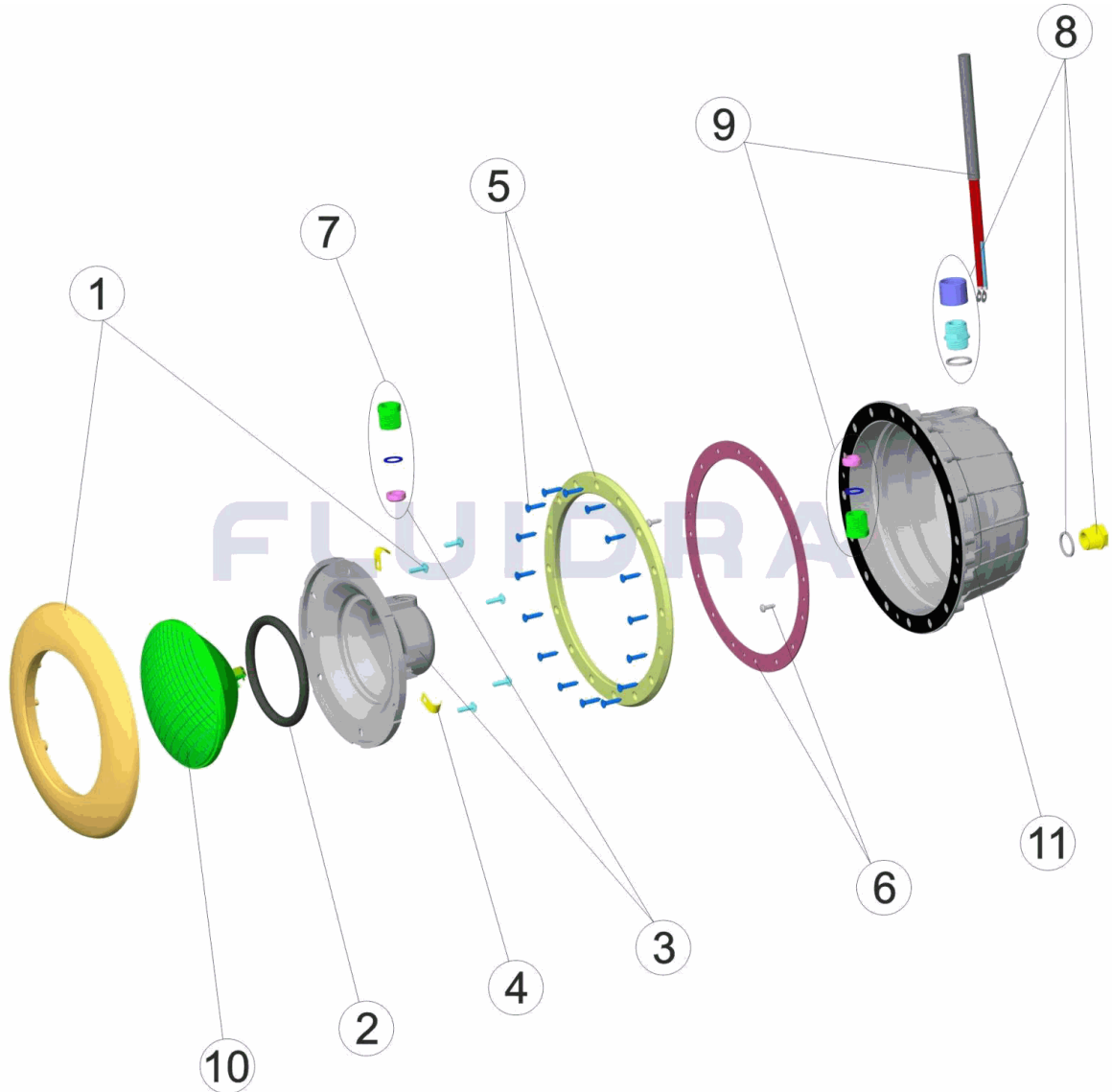


**ESPAÑOL**

POS	CODIGO	DESCRIPCION	CANTIDAD	POS	CODIGO	DESCRIPCION	CANTIDAD
1	4403014301	ARO EMBELLECEDOR		7	4403010312	PRENSAESTOPAS FOCO PROYECTOR M-;	
2	4403010304	JUNTA TORICA PROYECTOR		8	4403010313	PRENSAESTOPAS CUERPO PROYECTOR	
3	4403010305	FONDO FOCO PROYECTOR HALOGENO		9	4403010314	CABLE PROYECTOR M-25 HALOGENO	
4	4403014304	CLIP FIJACION PROYECTOR		10	4403010058	LAMPARA 300W.12.V.	
5	4403013506	BRIDA FIJACION PROYECTOR (PARKER)		11	07853R0002	NICHO PROYECTOR ESTÁNDAR BI-MATEF	
6	4403013501	JUNTA ADHESIVA PROYECTOR ANCHA STD					

CODE 34409

DESCRIPTION: PROJECTEUR STANDARD PP / PISCINES EASY-LINE

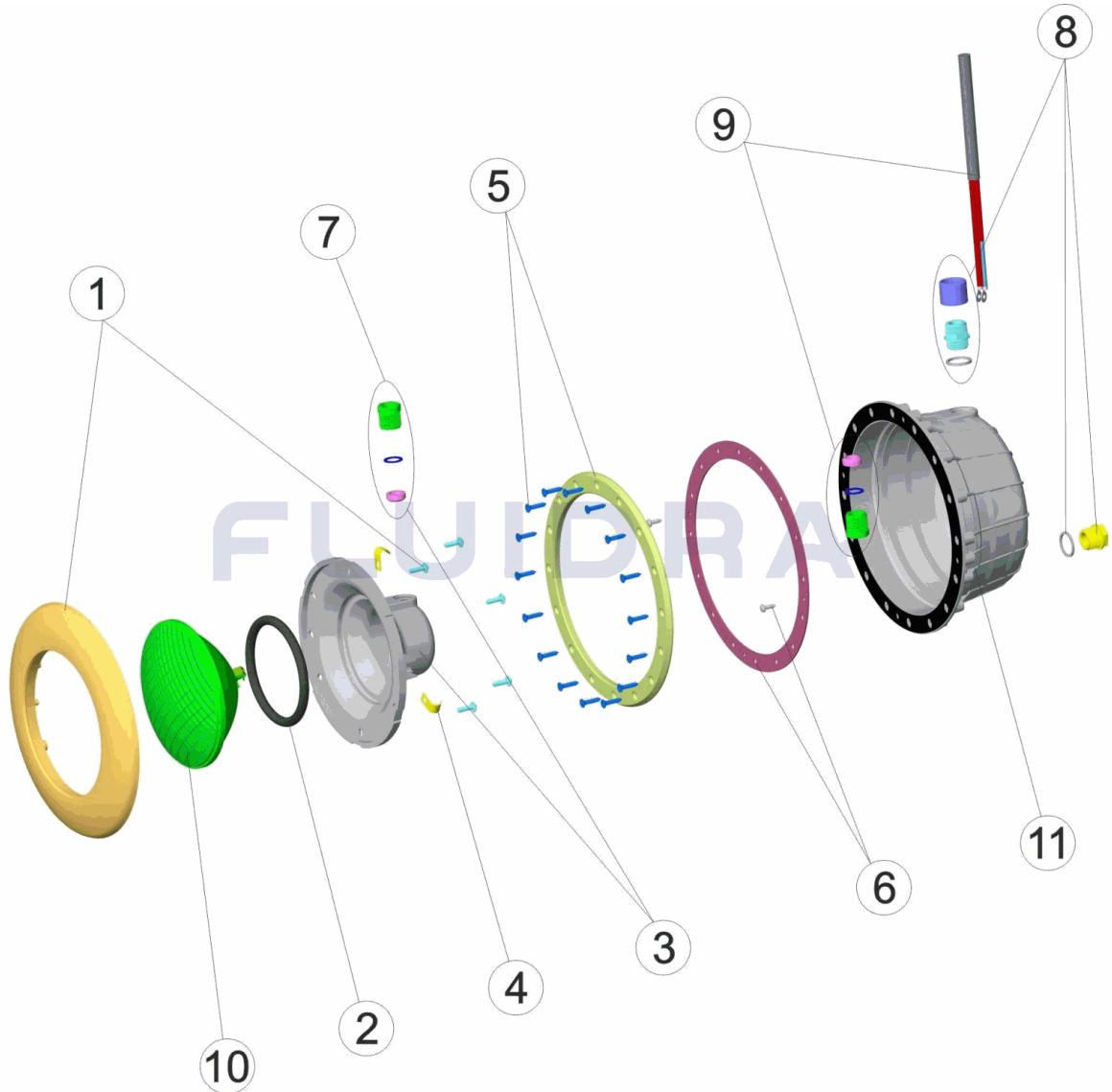


FRANCAIS

POS	CODE	DESCRIPTION	QUANTITE	POS	CODE	DESCRIPTION	QUANTITE
1	4403014301	ENJOLIVEUR		7	4403010312	PRESSE ETOUPE PROJECTEUR M-25	
2	4403010304	JOINT TORIQUE PROJECTEUR		8	4403010313	CORPS PRESSE ETOUPE M-25	
3	4403010305	NICHE D'AMPOULE DE PROJECTEUR		9	4403010314	CABLE PROJECTEUR M-25	
4	4403014304	CLIP FIXATION PROJECTEUR		10	4403010058	LAMPE	
5	4403013506	BRIDE FIXATION PROJECTEUR (PARKER)		11	07853R0002	NICHE PROJECTEUR STANDARD BI-MATE	
6	4403013501	JOINT ADHESIF PROJECTEUR					

CODE **34409**

DESCRIPTION: **LIGHT STANDARD PP. / EASY-LINE POOLS**

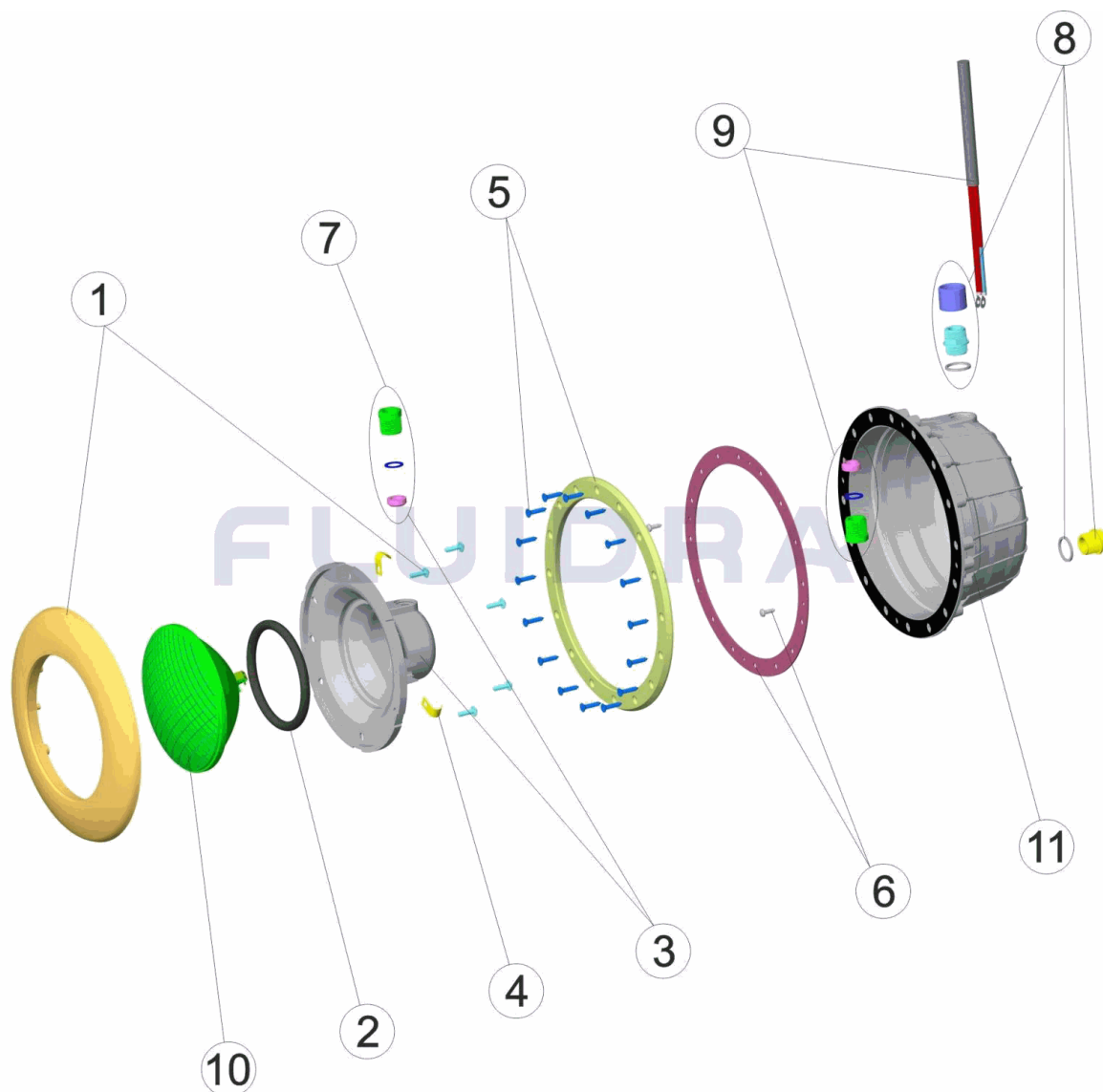


**ENGLISH**

POS	CODE	DESCRIPTION	QUANTITY	POS	CODE	DESCRIPTION	QUANTITY
1	4403014301	FACEPLATE		7	4403010312	PACKING GLAND M-25	
2	4403010304	LIGHT O RING		8	4403010313	BODY PACKING GLAND M-25	
3	4403010305	BACK COVER		9	4403010314	LIGHT CABLE M-25	
4	4403014304	LIGHT FIXING CLIP		10	4403010058	LIGHTBULB	
5	4403013506	LIGHT FIXING FLANGE (PARKER)		11	07853R0002	BIMATERIAL STANDARD PROJECTOR HOI	
6	4403013501	LIGHT ADHESIVE GASKET					

CODICE **34409**

DESCRIZIONE: **PROIETTORE STANDARD PP./PISCINE EASY-LINE**

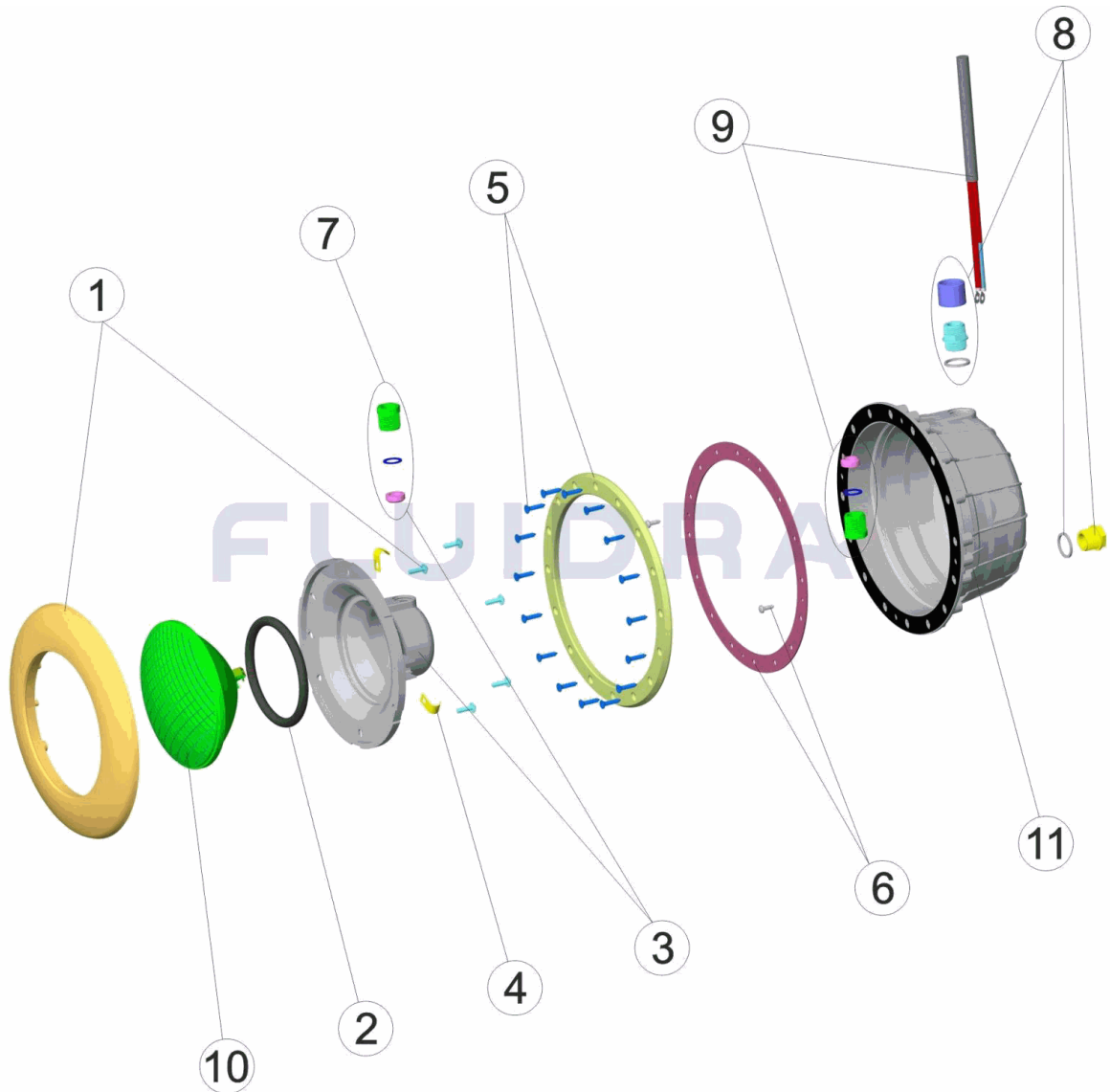


**ITALIANO**

POS	CODICE	DESCRIZIONE	QUANTITA'	POS	CODICE	DESCRIZIONE	QUANTITA'
1	4403014301	COPRIFLANGIA		7	4403010312	PRESSACAVI M-25	
2	4403010304	O-RING FARO		8	4403010313	PRESSACAVI CORPO M-25	
3	4403010305	COPPA FARO		9	4403010314	CABLE PROJECTEUR M-25	
4	4403014304	CLIP FISSAGGIO FARO		10	4403010058	LAMPADINA	
5	4403013506	FLANGIA FISSAGGIO FARO (PARKER)		11	07853R0002	NICHIA BIMATERIALE PROIETTORE STANI	
6	4403013501	GUARNIZIONE ADESIVA FARO					

CODE **34409**

BESCHREIBUNG: **UWS STANDARD PP./ BECKEN EASY-LINE**

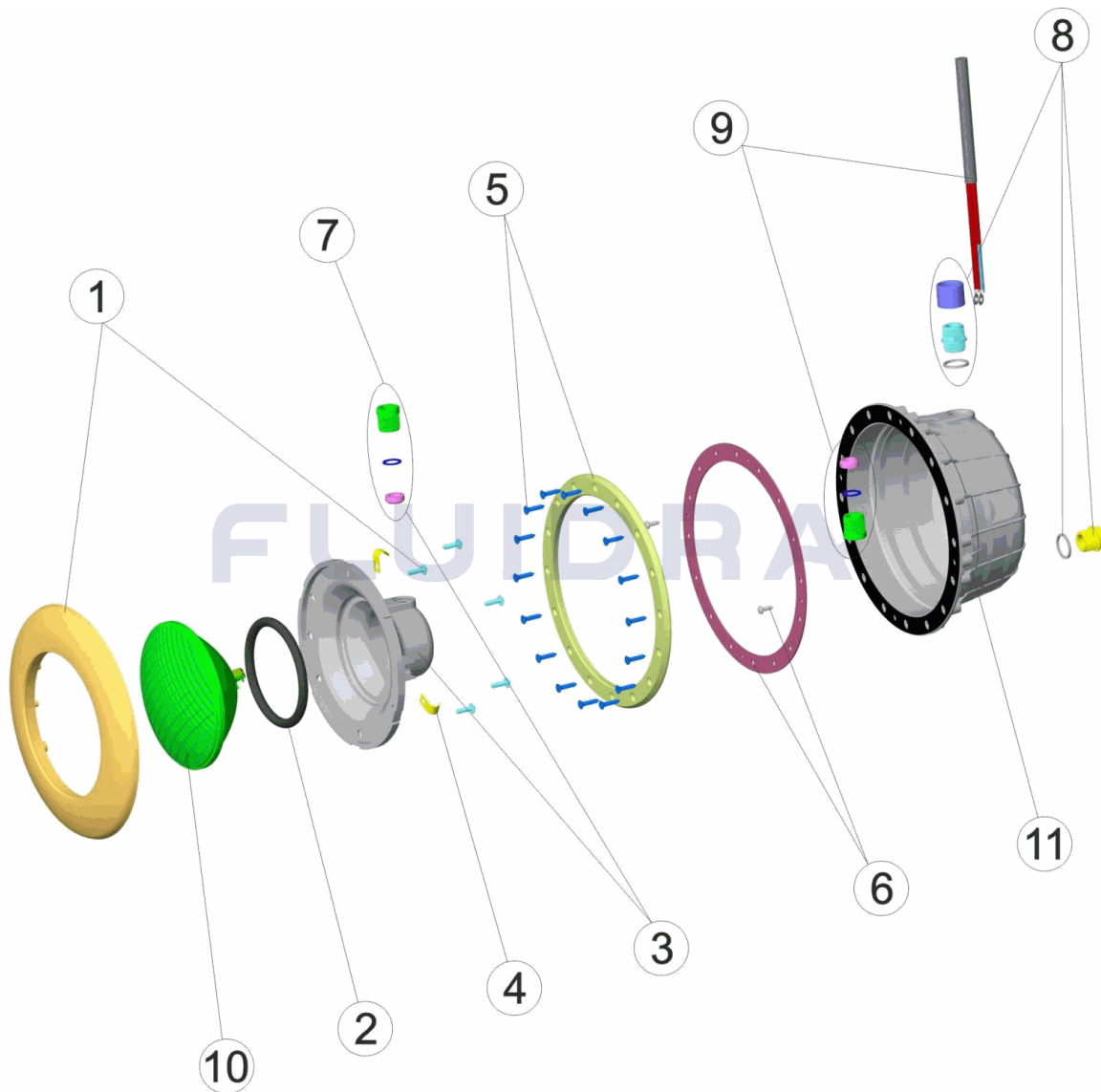


**DEUTSCH**

POS	CODE	BESCHREIBUNG	MENGE	POS	CODE	BESCHREIBUNG	MENGE
1	4403014301	ZIERRING		7	4403010312	QUETSCHVERSCHRAUBUNG LAMPE UWS	
2	4403010304	O-RING UWS		8	4403010313	QUETSCHVERSCHRAUBUNG GEHÄUSE U	
3	4403010305	BASIS UWS HALOGEN		9	4403010314	UWS-KABEL M-25 HALOGEN	
4	4403014304	FIXIERCLIP UWS		10	4403010058	LAMPE 300 W 12 V	
5	4403013506	BEFESTIGUNGSFLANSCH UWS (PARKER)		11	07853R0002	EINBAUTOPF STANDARD BIMATERIAL	
6	4403013501	DICHTUNG SELBSTKLEBEND UWS BREIT ST					

CODIGO **34409**

DESCRIÇÃO: **PROJECTOR STANDARD PP./ PISCINAS EASY-LINE**



**PORTUGUES**

POS	CODIGO	DESCRIÇÃO	QUANTIDADE	POS	CODIGO	DESCRIÇÃO	QUANTIDADE
1	4403014301	ARO EMBELEZADOR		7	4403010312	BUCIN FOCO M-25	
2	4403010304	JUNTA TÓRICA PROJECTOR		8	4403010313	BUCIN CORPO M-25	
3	4403010305	FUNDO FOCO PROJECTOR		9	4403010314	CABO PROJECTOR M-25	
4	4403014304	CLIP FIXAÇÃO PROJECTOR		10	4403010058	BOMBILHA	
5	4403013506	FLANGE FIXAÇÃO PROJECTOR (PARKER)		11	07853R0002	NICHO BIMATERIAL PROJETOR	
6	4403013501	JUNTA ADESIVA PROJECTOR					