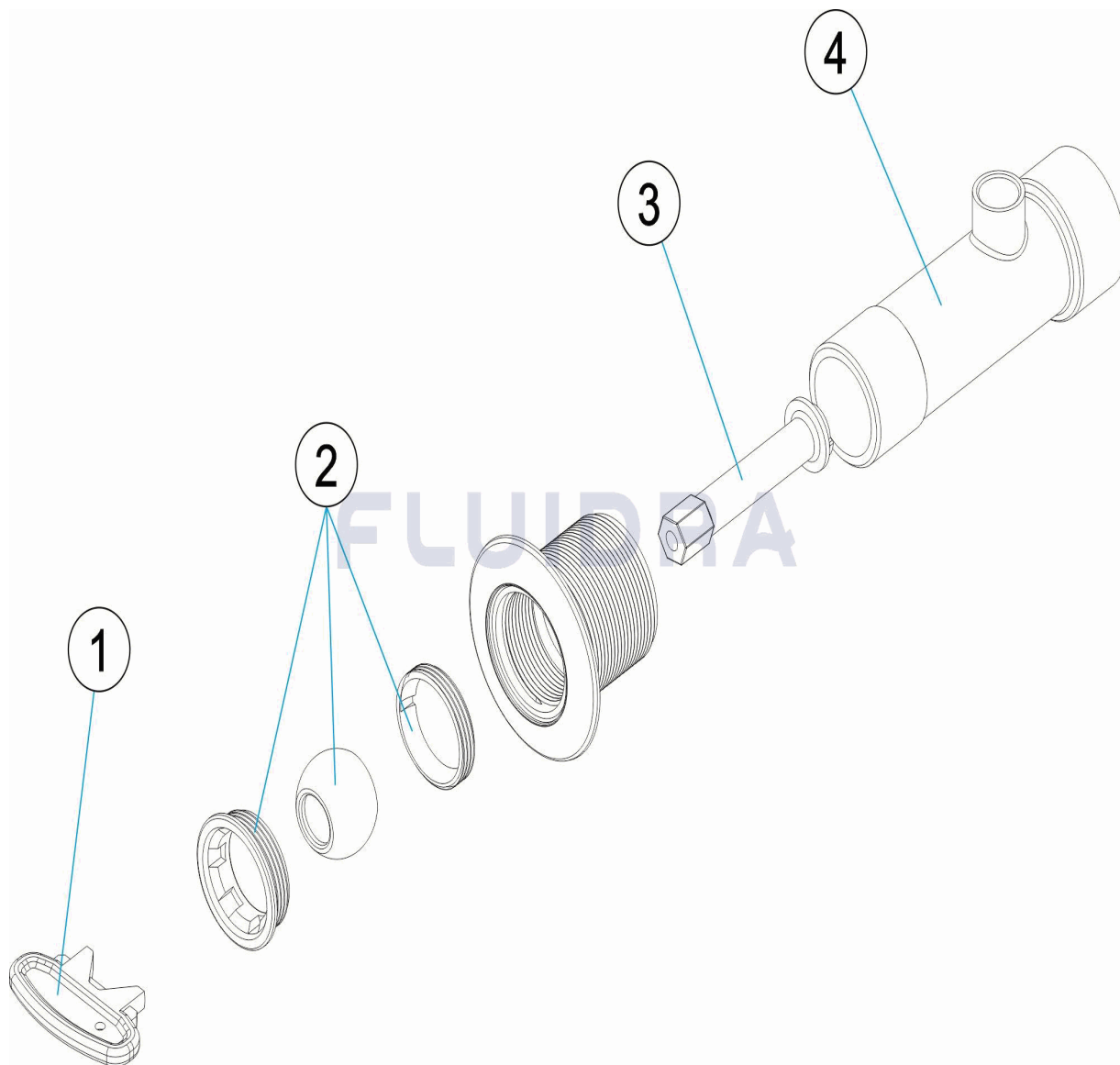


CODIGO 32113, 32113CL090, 32113CL129, 32113CL144, 32370, 32370CL090, 32370CL129, 32370CL144

DESCRIPCION: BOQUILLA PAR MASAJE PIS, HORMIGON 169 - 254 M/M



ESPAÑOL

POS	CODIGO	DESCRIPCION	CANTIDAD	POS	CODIGO	DESCRIPCION	CANTIDAD
1	4402040304	LLAVE BOQUILLA		3	* 4402045102	VENTURI PASAMUROS L-169 M/M.	
2	* 4402045101	BOLA D.20 + CASQUILLO + TUERCA		3	* 4402045103	VENTURI PASAMUROS L-254 M/M.	
2	* 4402040129	BOLA D.20 + CASQUILLO + TUERCA		4	* 31410R0001	CUERPO PASAMUROS L169MM ENCOLADC	
2	* 4402040130	BOLA D.20 + CASQUILLO + TUERCA		4	* 32370R0001	CUERPO VENTURI L-254M/M. ENCOLAR	
2	* 4402040131	BOLA D.20 + CASQUILLO + TUERCA					

CODIGO **32113, 32113CL090, 32113CL129, 32113CL144, 32370, 32370CL090, 32370CL129, 32370CL144**

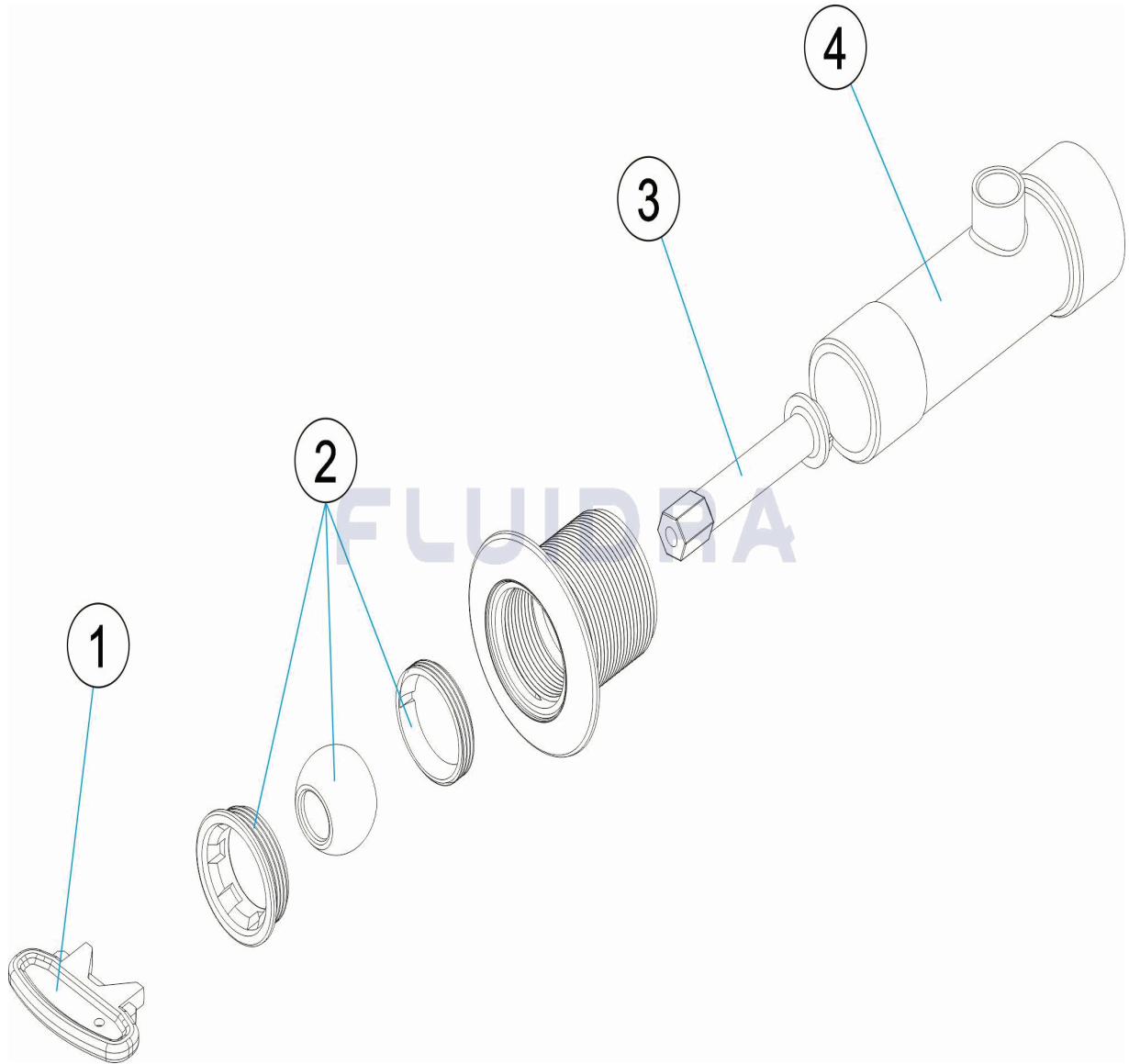
DESCRIPCION: BOQUILLA PAR MASAJE PIS, HORMIGON 169 - 254 M/M

OBSERVACIONES

POS	CODIGO	OBSERVACIONES
2	* 4402045101	PARA: 32113, 32370 BLANCO / WHITE
2	* 4402040129	PARA: 32113CL090, 32370CL090 BEIGE
2	* 4402040130	PARA: 32113CL129, 32370CL129 GRIS / GREY
2	* 4402040131	PARA: 32113CL144, 32370CL144 ANTRACITA / ANTHRACITE
3	* 4402045102	PARA: 32113, 32113CL090, 32113CL129, 32113CL144
3	* 4402045103	PARA: 32370, 32370CL090, 32370CL129, 32370CL144
4	* 31410R0001	PARA: 32113, 32113CL090, 32113CL129, 32113CL144
4	* 32370R0001	PARA: 32370, 32370CL090, 32370CL129, 32370CL144

CODE **32113, 32113CL090, 32113CL129, 32113CL144, 32370, 32370CL090, 32370CL129, 32370CL144**

DESCRIPTION: **JET MASSAGE PIS. BÉTON 169 - 254 M/M**



FRANCAIS

POS	CODE	DESCRIPTION	QUANTITE	POS	CODE	DESCRIPTION	QUANTITE
1	4402040304	CLEF POUR BUSE		3	* 4402045102	TRAVERSÉES DE PAROI VENTURI L-169 M/	
2	* 4402045101	ROTULE 20 + BAGUE + ECROU		3	* 4402045103	TRAVERSÉES DE PAROI VENTURI L-254 M/	
2	* 4402040129	ROTULE 20 + BAGUE + ECROU		4	* 31410R0001	CORPS TRAVERSEE DE PAROI A COLLER L	
2	* 4402040130	ROTULE 20 + BAGUE + ECROU		4	* 32370R0001	CORPS TRAVERSEE DE PAROI A COLLER L	
2	* 4402040131	ROTULE 20 + BAGUE + ECROU					

CODE **32113, 32113CL090, 32113CL129, 32113CL144, 32370, 32370CL090, 32370CL129, 32370CL144**

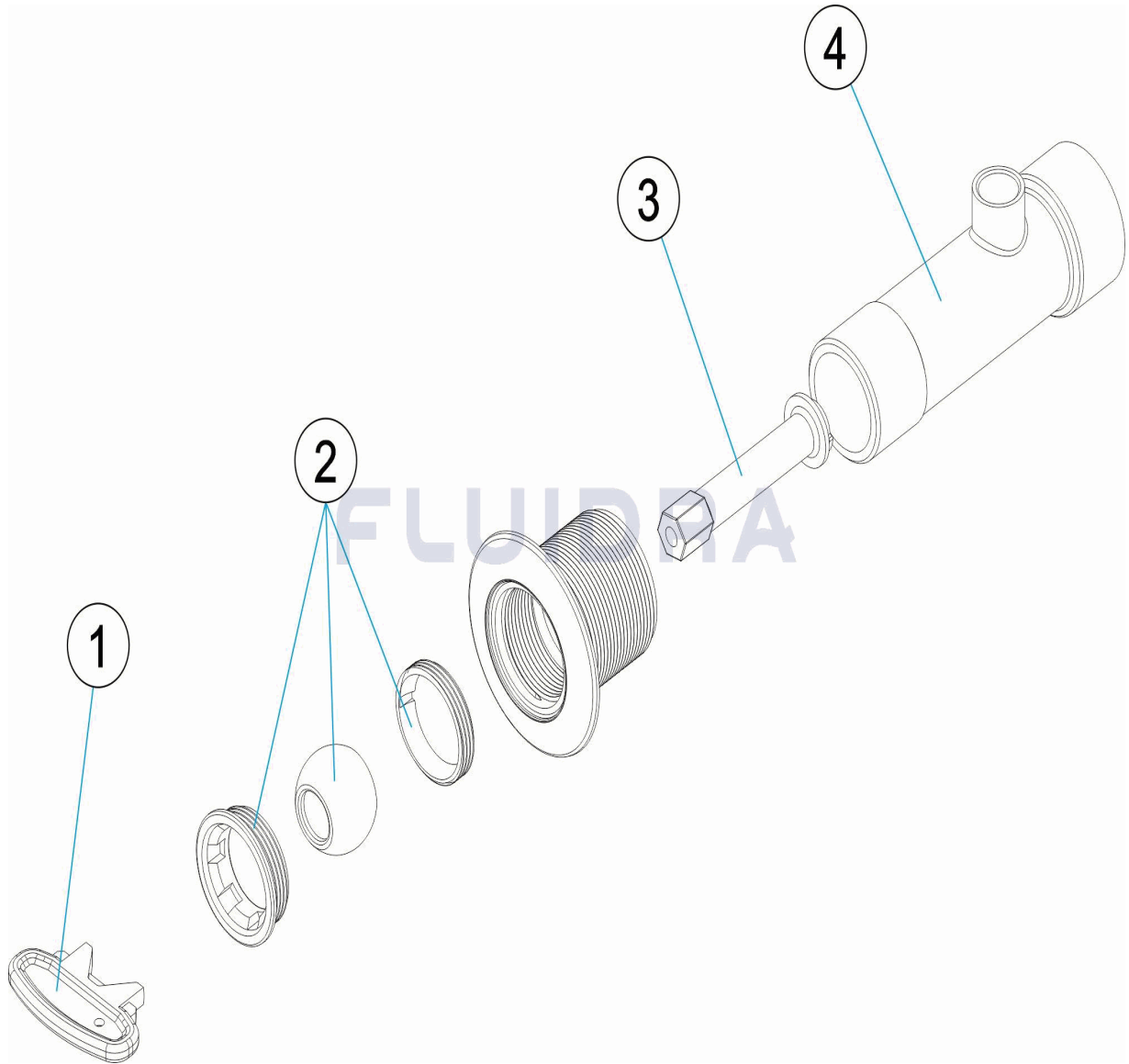
DESCRIPTION: **JET MASSAGE PIS. BÉTON 169 - 254 M/M**

OBSERVATIONS

POS	CODE	OBSERVATIONS
2	* 4402045101	POUR: 32113, 32370 BLANCO / WHITE
2	* 4402040129	POUR: 32113CL090, 32370CL090 BEIGE
2	* 4402040130	POUR: 32113CL129, 32370CL129 GRIS / GREY
2	* 4402040131	POUR: 32113CL144, 32370CL144 ANTRACITA / ANTHRACITE
3	* 4402045102	POUR: 32113, 32113CL090, 32113CL129, 32113CL144
3	* 4402045103	POUR: 32370, 32370CL090, 32370CL129, 32370CL144
4	* 31410R0001	POUR: 32113, 32113CL090, 32113CL129, 32113CL144
4	* 32370R0001	POUR: 32370, 32370CL090, 32370CL129, 32370CL144

CODE 32113, 32113CL090, 32113CL129, 32113CL144, 32370, 32370CL090, 32370CL129, 32370CL144

DESCRIPTION: **MESSAGE NOZZLES, CONCRETE POOL 169 - 254 M/M**



ENGLISH

POS	CODE	DESCRIPTION	QUANTITY	POS	CODE	DESCRIPTION	QUANTITY
1	4402040304	KEY FOR INLET		3	* 4402045102	VENTRUI WALL CONDUIT L-169 MM	
2	* 4402045101	EYE BALL NOZZLE 20 + BUSH + NUT		3	* 4402045103	VENTRUI WALL CONDUIT L-254 MM	
2	* 4402040129	EYE BALL NOZZLE 20 + BUSH + NUT		4	* 31410R0001	L169MM. SOLVENT-WELDED WALL CONDU	
2	* 4402040130	EYE BALL NOZZLE 20 + BUSH + NUT		4	* 32370R0001	L254MM VENTURI BODY. SOLVENT-WELD	
2	* 4402040131	EYE BALL NOZZLE 20 + BUSH + NUT					

CODE **32113, 32113CL090, 32113CL129, 32113CL144, 32370, 32370CL090,
32370CL129, 32370CL144**

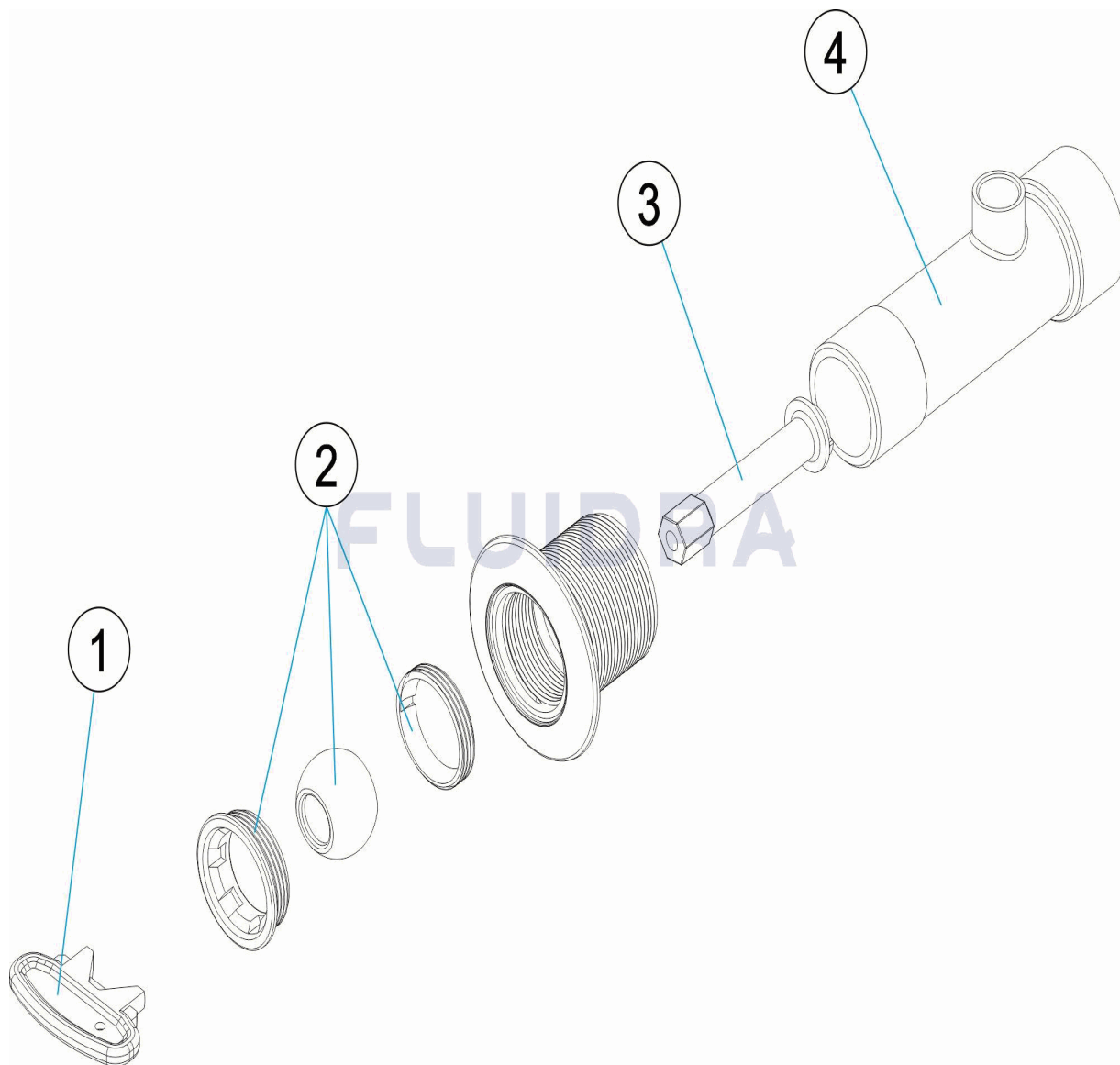
DESCRIPTION: **MESSAGE NOZZLES, CONCRETE POOL 169 - 254 M/M**

OBSERVATIONS

POS	CODE	OBSERVATIONS
2	* 4402045101	FOR: 32113, 32370 BLANCO / WHITE
2	* 4402040129	FOR: 32113CL090, 32370CL090 BEIGE
2	* 4402040130	FOR: 32113CL129, 32370CL129 GRIS / GREY
2	* 4402040131	FOR: 32113CL144, 32370CL144 ANTRACITA / ANTHRACITE
3	* 4402045102	FOR: 32113, 32113CL090, 32113CL129, 32113CL144
3	* 4402045103	FOR: 32370, 32370CL090, 32370CL129, 32370CL144
4	* 31410R0001	FOR: 32113, 32113CL090, 32113CL129, 32113CL144
4	* 32370R0001	FOR: 32370, 32370CL090, 32370CL129, 32370CL144

CODICE 32113, 32113CL090, 32113CL129, 32113CL144, 32370, 32370CL090, 32370CL129, 32370CL144

DESCRIZIONE: BOCCHETTA PER MASSAGGI PISCINA CEMENTO 169 - 254 M/M



ITALIANO

POS	CODICE	DESCRIZIONE	QUANTITA'	POS	CODICE	DESCRIZIONE	QUANTITA'
1	4402040304	CHIAVE		3	* 4402045102	PASSANTE A MURO CON SISTEMA VENTUF	
2	* 4402045101	SFERA 20 + RIDUZIONE + GHIERA		3	* 4402045103	PASSANTE A MURO CON SISTEMA VENTUF	
2	* 4402040129	SFERA 20 + RIDUZIONE + GHIERA		4	* 31410R0001	CORPO PASSAMURO L169MM INCOLLATO	
2	* 4402040130	SFERA 20 + RIDUZIONE + GHIERA		4	* 32370R0001	CORPO VENTURI L-254M/M. INCOLLARE	
2	* 4402040131	SFERA 20 + RIDUZIONE + GHIERA					

CODICE **32113, 32113CL090, 32113CL129, 32113CL144, 32370, 32370CL090, 32370CL129, 32370CL144**

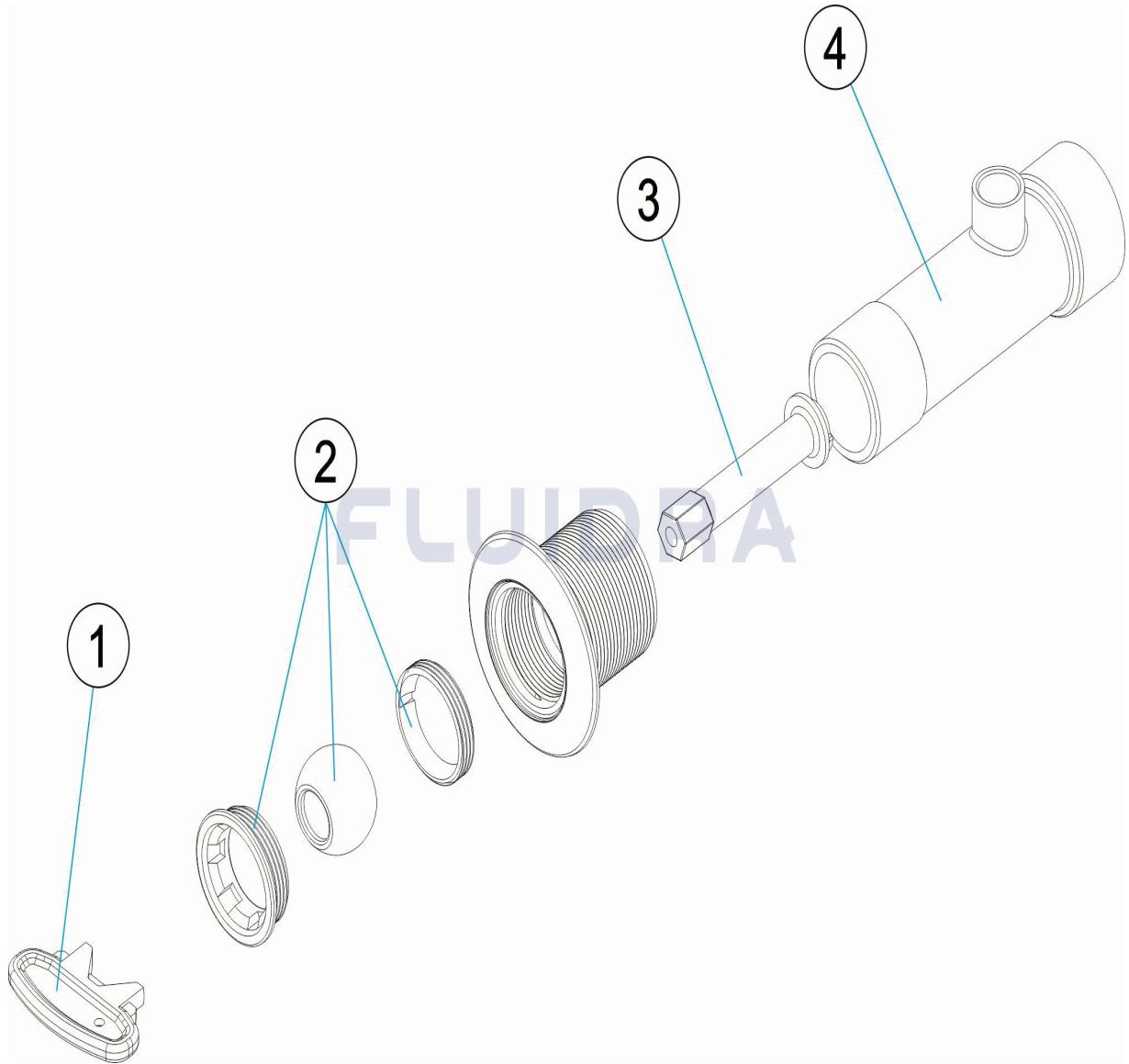
DESCRIZIONE: BOCCHETTA PER MASSAGGI PISCINA CEMENTO 169 - 254 M/M

OSSERVAZIONI

POS	CODICE	OSSERVAZIONI
2	* 4402045101	PER: 32113, 32370 BLANCO / WHITE
2	* 4402040129	PER: 32113CL090, 32370CL090 BEIGE
2	* 4402040130	PER: 32113CL129, 32370CL129 GRIS / GREY
2	* 4402040131	PER: 32113CL144, 32370CL144 ANTRACITA / ANTHRACITE
3	* 4402045102	PER: 32113, 32113CL090, 32113CL129, 32113CL144
3	* 4402045103	PER: 32370, 32370CL090, 32370CL129, 32370CL144
4	* 31410R0001	PER: 32113, 32113CL090, 32113CL129, 32113CL144
4	* 32370R0001	PER: 32370, 32370CL090, 32370CL129, 32370CL144

CODE **32113, 32113CL090, 32113CL129, 32113CL144, 32370, 32370CL090, 32370CL129, 32370CL144**

BESCHREIBUNG: **MASSAGEDÜSE BETONBECKEN 169 - 254 M/M**



DEUTSCH

POS	CODE	BESCHREIBUNG	MENGE	POS	CODE	BESCHREIBUNG	MENGE
1	4402040304	SCHLÜSSEL DÜSE		3	* 4402045102	VENTURI WANDDURCHFÜHRUNG L - 169 M	
2	* 4402045101	KUGEL D. 20, FASSUNG UND MUTTER		3	* 4402045103	VENTURI WANDDURCHFÜHRUNG L - 254 M	
2	* 4402040129	KUGEL D. 20, FASSUNG UND MUTTER		4	* 31410R0001	GEHÄUSE WANDDURCHFÜHRUNG L=169 M	
2	* 4402040130	KUGEL D. 20, FASSUNG UND MUTTER		4	* 32370R0001	GEHÄUSE VENTURI L - 254 MM ZUM KLEBE	
2	* 4402040131	KUGEL D. 20, FASSUNG UND MUTTER					

CODE **32113, 32113CL090, 32113CL129, 32113CL144, 32370, 32370CL090,
32370CL129, 32370CL144**

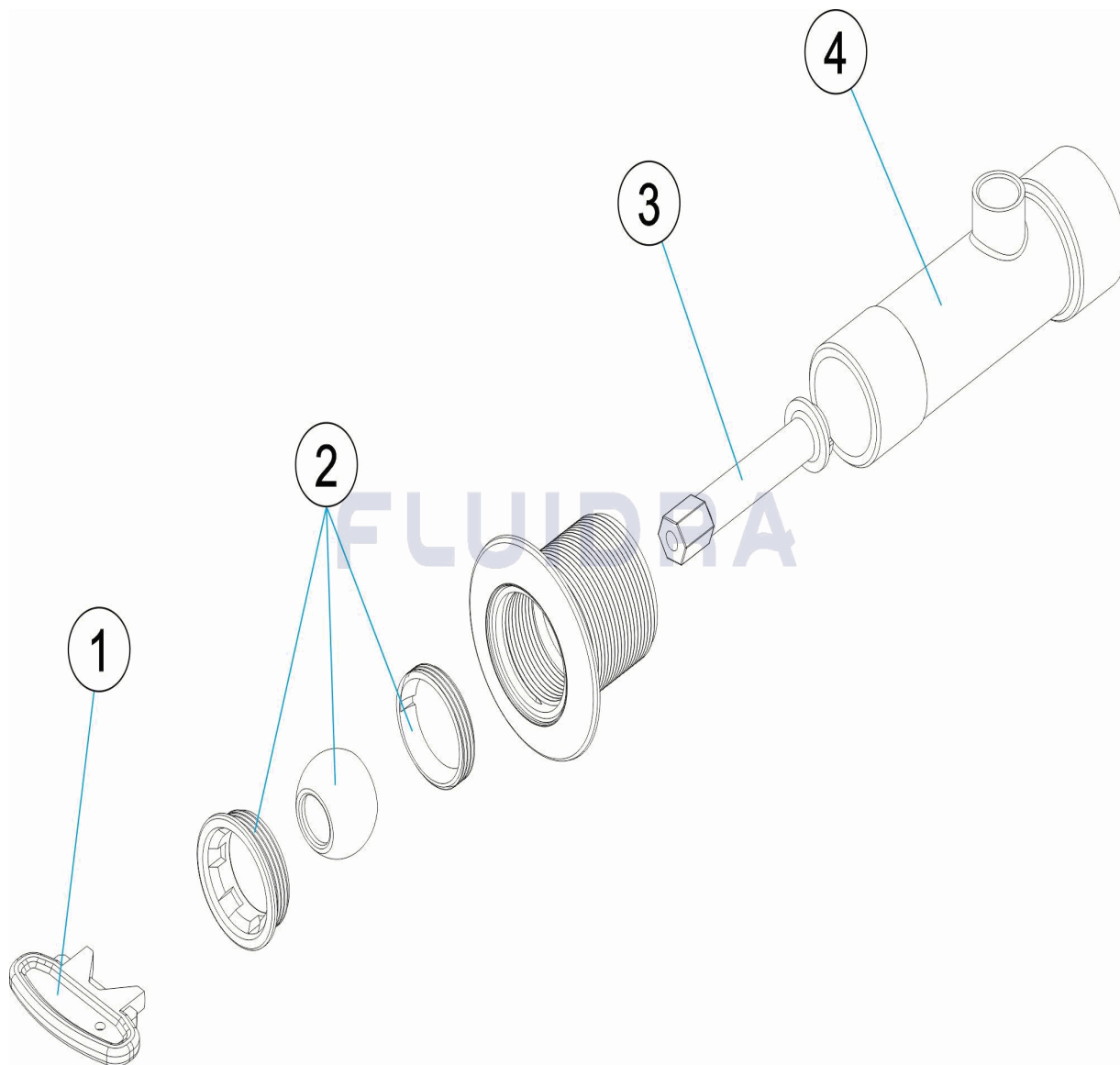
BESCHREIBUNG: **MASSAGEDÜSE BETONBECKEN 169 - 254 M/M**

HINWEISE

POS	CODE	HINWEISE
2	* 4402045101	FÜR: 32113, 32370 BLANCO / WHITE
2	* 4402040129	FÜR: 32113CL090, 32370CL090 BEIGE
2	* 4402040130	FÜR: 32113CL129, 32370CL129 GRIS / GREY
2	* 4402040131	FÜR: 32113CL144, 32370CL144 ANTRACITA / ANTHRACITE
3	* 4402045102	FÜR: 32113, 32113CL090, 32113CL129, 32113CL144
3	* 4402045103	FÜR: 32370, 32370CL090, 32370CL129, 32370CL144
4	* 31410R0001	FÜR: 32113, 32113CL090, 32113CL129, 32113CL144
4	* 32370R0001	FÜR: 32370, 32370CL090, 32370CL129, 32370CL144

CODIGO 32113, 32113CL090, 32113CL129, 32113CL144, 32370, 32370CL090, 32370CL129, 32370CL144

DESCRIÇÃO: BOQUILHA PARA MASSAGEM PIS. BETÃO 169 - 254 M/M



PORTUGUES

POS	CODIGO	DESCRIÇÃO	JANTIDADE	POS	CODIGO	DESCRIÇÃO	JANTIDADE
1	4402040304	CHAVE BOCA		3	* 4402045102	VENTURI PASAMUROS L-169 M/M.	
2	* 4402045101	BOLA 20 + CAQUILHO + PORCA		3	* 4402045103	VENTURI PASAMUROS L-254 M/M.	
2	* 4402040129	BOLA 20 + CAQUILHO + PORCA		4	* 31410R0001	PEÇA CONDUTA ISOLANTE L169MM COLAC	
2	* 4402040130	BOLA 20 + CAQUILHO + PORCA		4	* 32370R0001	PEÇA VENTURI L-254M/M. COLÁVEL	
2	* 4402040131	BOLA 20 + CAQUILHO + PORCA					

CODIGO **32113, 32113CL090, 32113CL129, 32113CL144, 32370, 32370CL090, 32370CL129, 32370CL144**

DESCRIÇÃO: BOQUILHA PARA MASSAGEM PIS. BETÃO 169 - 254 M/M

OBSERVAÇÕES

POS	CODIGO	OBSERVAÇÕES
2	* 4402045101	PARA: 32113, 32370 BLANCO / WHITE
2	* 4402040129	PARA: 32113CL090, 32370CL090 BEIGE
2	* 4402040130	PARA: 32113CL129, 32370CL129 GRIS / GREY
2	* 4402040131	PARA: 32113CL144, 32370CL144 ANTRACITA / ANTHRACITE
3	* 4402045102	PARA: 32113, 32113CL090, 32113CL129, 32113CL144
3	* 4402045103	PARA: 32370, 32370CL090, 32370CL129, 32370CL144
4	* 31410R0001	PARA: 32113, 32113CL090, 32113CL129, 32113CL144
4	* 32370R0001	PARA: 32370, 32370CL090, 32370CL129, 32370CL144