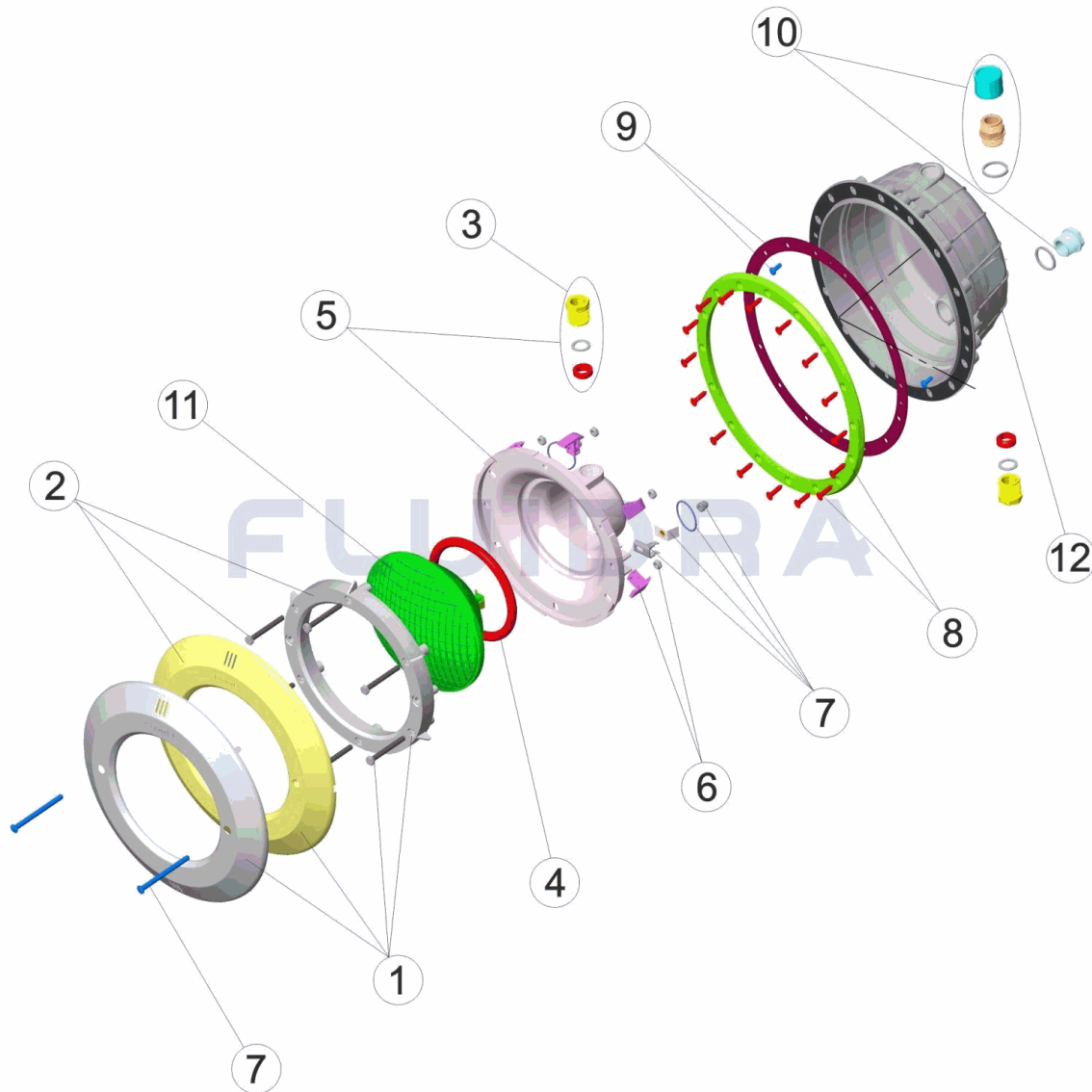


CODIGO 07851, 07852, 21079

DESCRIPCION: PROY. STD. NICHO PP. EMB. INOX, BLANCO Y PARKER



**ESPAÑOL**

POS	CODIGO	DESCRIPCION	CANTIDAD	POS	CODIGO	DESCRIPCION	CANTIDAD
1	* 4403010301	ARO INOX. PROYECTOR		8	* 4403012411	ARO PROYECTOR PISC. PREF.	
2	* 4403010302	ARO BLANCO PROYECTOR		8	* 4403012416	ARO PROYECTOR PISC. PREF. TOR. PARKER	
3	4403010312	PRENSAESTOPAS FOCO PROYECTOR M-25		9	4403012412	JUNTA ADHESIVA PROYECTOR	
4	4403010304	JUNTA TORICA PROYECTOR		10	4403010313	PRENSAESTOPAS CUERPO PROYECTOR	
5	4403010305	FONDO FOCO PROYECTOR HALOGENO		11	4403010058	LAMPARA 300W.12.V.	
6	4403010306	CLIP FIJACION PROYECTOR		12	* 07856R0200	NICHO PROYECTOR STD. M-25 BI MATERIA	
7	4403015002	CJTO. FIJACION PROYECTOR JELLY STD. A:		12	* 21079R0001	NICHO PROYECTOR STD M-25 PIS.	

**CODIGO 07851, 07852, 21079**

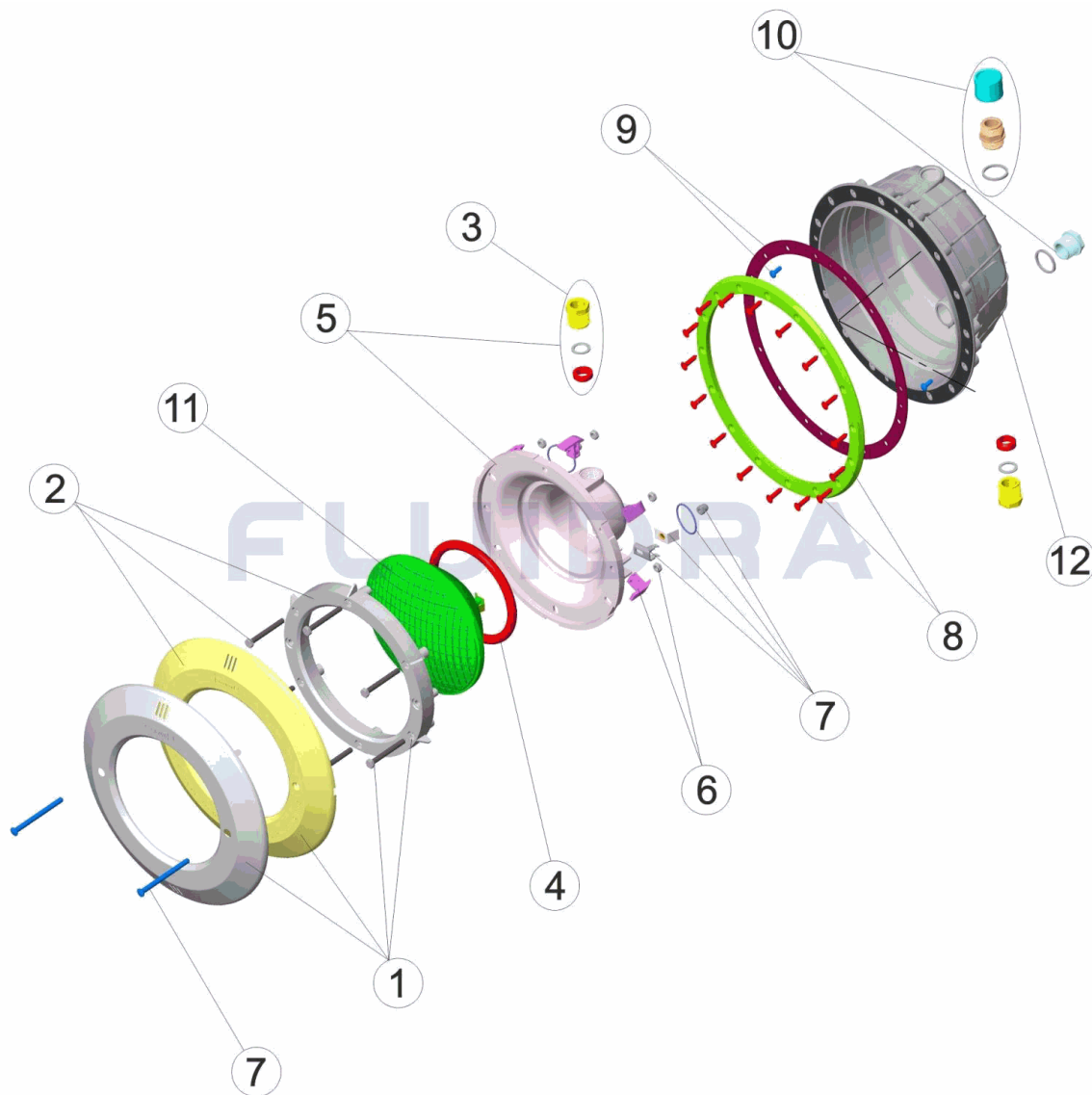
**DESCRIPCION: PROY. STD. NICHOS PP. EMB. INOX, BLANCO Y PARKER**

### OBSERVACIONES

POS	CODIGO	OBSERVACIONES
1	4403010301	PARA: 07851
2	4403010302	PARA: 07852, 21079
8	4403012411	PARA: 07851, 07852
8	4403012416	PARA: 21079
12	07856R0200	PARA: 07851, 07852
12	21079R0001	PARA: 21079

CODE **07851, 07852, 21079**

DESCRIPTION: **PROJ. STD. NICHE PP. ENJ. INOX, BLANC ET PARKER**



**FRANCAIS**

POS	CODE	DESCRIPTION	QUANTITE	POS	CODE	DESCRIPTION	QUANTITE
1	* 4403010301	ENJOLIVEUR INOX DE PROJECTEUR		8	* 4403012411	ANNEALI PROJECTEUR PISCINE LINER	
2	* 4403010302	ENJOLIVEUR BLANC DE PROJECTEUR		8	* 4403012416	ANNEALI PROJECTEUR PISCINE LINER PA	
3	4403010312	PRESSE ETOUPE PROJECTEUR M-25		9	4403012412	JOINT ADHESIF PROJECTEUR	
4	4403010304	JOINT TORIQUE PROJECTEUR		10	4403010313	CORPS PRESSE ETOUPE M-25	
5	4403010305	NICHE D'AMPOULE DE PROJECTEUR		11	4403010058	LAMPE	
6	4403010306	CLIP FIXATION PROJECTEUR		12	* 07856R0200	NICHE PROJECTEUR POUR VIS MÉTRIQUE	
7	4403015002	ENSEMBLE FIXATION PROJECTEUR JELLY €		12	* 21079R0001	NICHE PROJECTEUR STD M-25 PIS.	

CODE **07851, 07852, 21079**

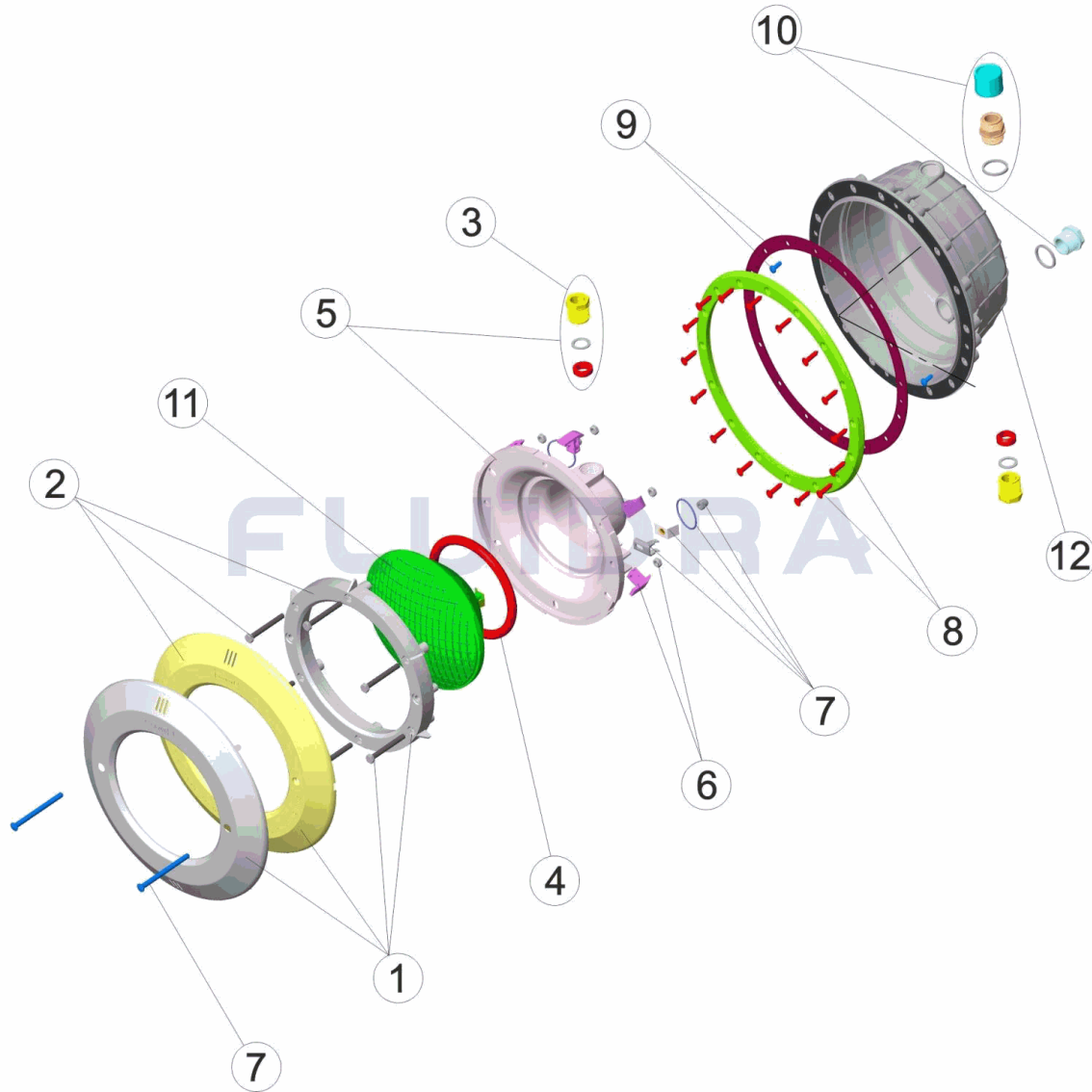
DESCRIPTION: **PROJ. STD. NICHE PP. ENJ. INOX, BLANC ET PARKER**

**OBSERVATIONS**

POS	CODE	OBSERVATIONS
1	4403010301	POUR: 07851
2	4403010302	POUR: 07852, 21079
8	4403012411	POUR: 07851, 07852
8	4403012416	POUR: 21079
12	07856R0200	POUR: 07851, 07852
12	21079R0001	POUR: 21079

CODE 07851, 07852, 21079

DESCRIPTION: STANDARD POOL LIGHT NICHE STAINLESS STEEL COVER WHITE AND PARKER



**ENGLISH**

POS	CODE	DESCRIPTION	QUANTITY	POS	CODE	DESCRIPTION	QUANTITY
1	* 4403010301	S.S. FACEPLATE AND SECURING RING		8	* 4403012411	LIGHT RIM	
2	* 4403010302	WHITE FACEPLATE		8	* 4403012416	LIGHT RIM PARKER	
3	4403010312	PACKING GLAND M-25		9	4403012412	LIGHT ADHESIVE GASKET	
4	4403010304	LIGHT O RING		10	4403010313	BODY PACKING GLAND M-25	
5	4403010305	BACK COVER		11	4403010058	LIGHTBULB	
6	4403010306	LIGHT FIXING CLIP		12	* 07856R0200	BIMATERIAL METRIC PITCH HOUSING	
7	4403015002	FIXING SET UNDERWATER LIGHT JELLY STI		12	* 21079R0001	STD M-25 PIS. LIGHT NICHE	

CODE **07851, 07852, 21079**

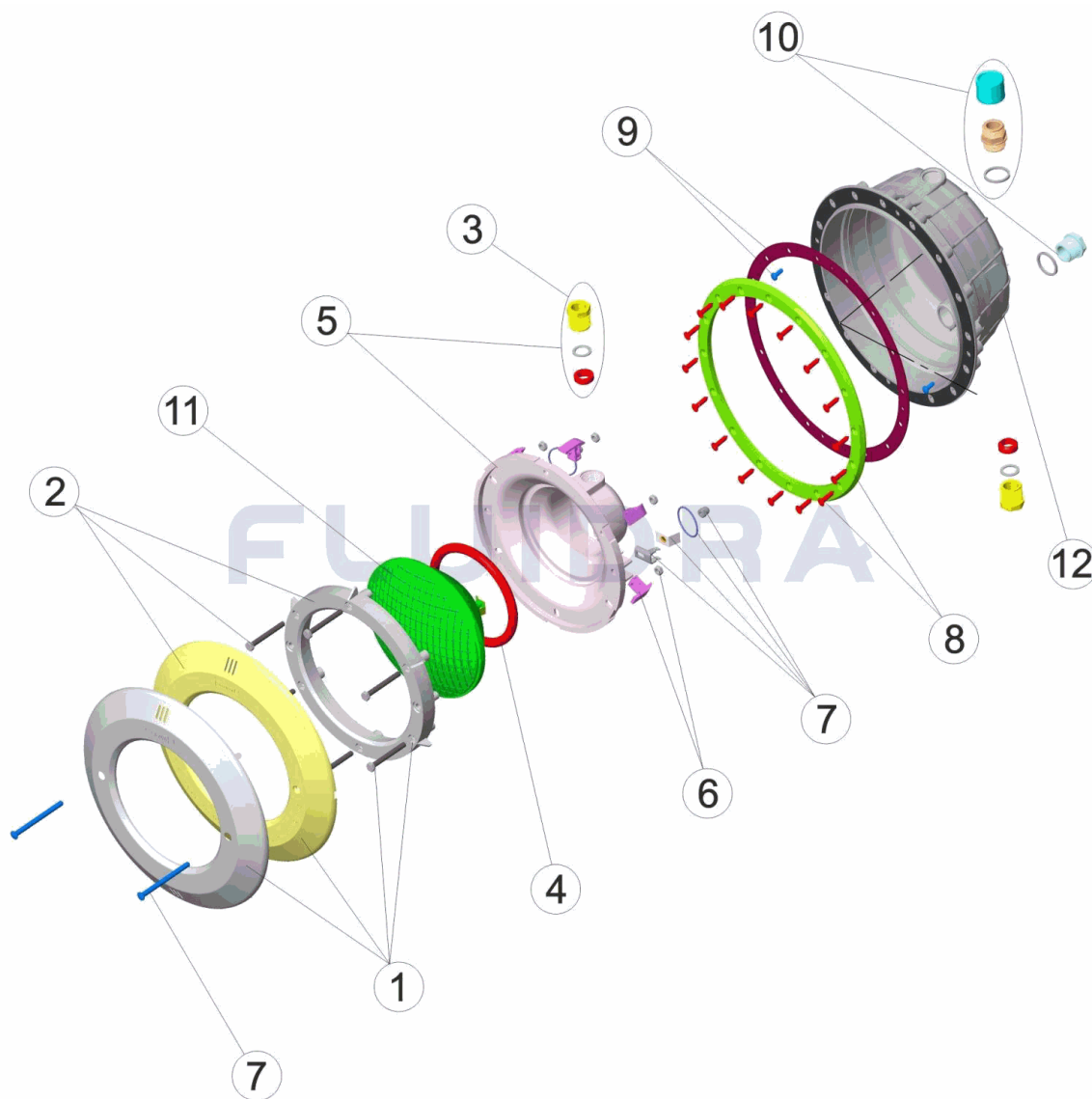
DESCRIPTION: **STANDARD POOL LIGHT NICHE STAINLESS STEEL COVER WHITE AND PARKER**

### OBSERVATIONS

POS	CODE	OBSERVATIONS
1	4403010301	FOR: 07851
2	4403010302	FOR: 07852, 21079
8	4403012411	FOR: 07851, 07852
8	4403012416	FOR: 21079
12	07856R0200	FOR: 07851, 07852
12	21079R0001	FOR: 21079

CODICE **07851, 07852, 21079**

DESCRIZIONE: **PROIETTORE STANDARD NICCHIA PP. PLACCA INOX, BIANCO E PARKER**



**ITALIANO**

POS	CODICE	DESCRIZIONE	QUANTITA'	POS	CODICE	DESCRIZIONE	QUANTITA'
1	* 4403010301	FLANGIA INOX FARO		8	* 4403012411	COPRIFLANGIA FARO P.F.	
2	* 4403010302	FLANGIA BIANCA FARO		8	* 4403012416	COPRIFLANGIA FARO P.F. PARKER	
3	4403010312	PRESSACAVI M-25		9	4403012412	GUARNIZIONE ADESIVA FARO	
4	4403010304	O-RING FARO		10	4403010313	PRESSACAVI CORPO M-25	
5	4403010305	COPPA FARO		11	4403010058	LAMPADINA	
6	4403010306	CLIP FISSAGGIO FARO		12	* 07856R0200	NICCHIA BIMATERIALE A FILETTO METRICC	
7	4403015002	KIT FISSAGGIO PROIETTORE JELLY STD. A2		12	* 21079R0001	NICCHIA PROIETTORE STD M-25 PIS.	

CODICE **07851, 07852, 21079**

DESCRIZIONE: **PROIETTORE STANDARD NICCHIA PP. PLACCA INOX, BIANCO E PARKER**

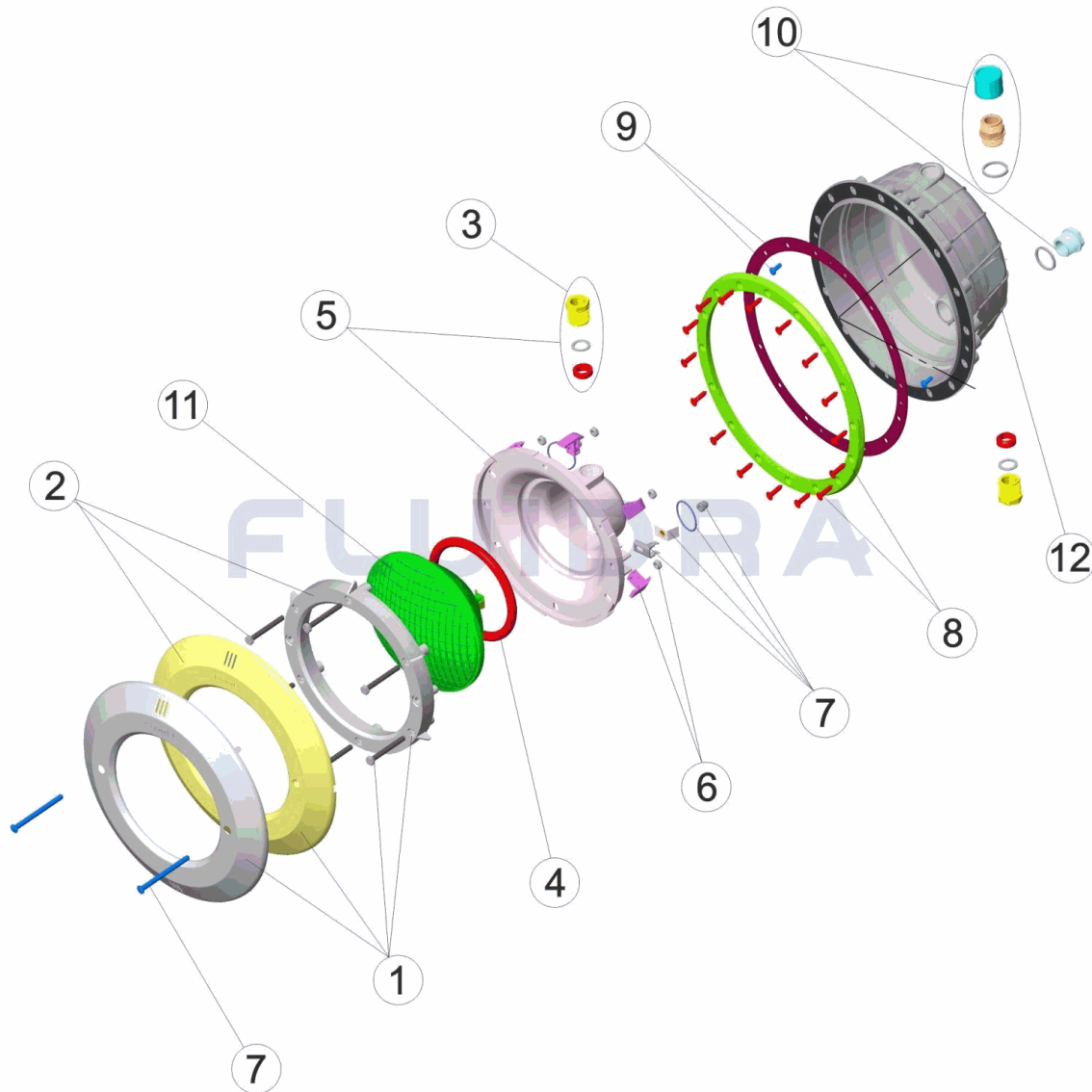
## OSSERVAZIONI

POS	CODICE	OSSERVAZIONI
1	4403010301	PER: 07851
2	4403010302	PER: 07852, 21079
8	4403012411	PER: 07851, 07852
8	4403012416	PER: 21079
12	07856R0200	PER: 07851, 07852
12	21079R0001	PER: 21079



CODE **07851, 07852, 21079**

BESCHREIBUNG: **UWS STANDARD EINBAUTOPF PP. BLENDE EDELSTAHL, WEISS UND PARKE**



**DEUTSCH**

POS	CODE	BESCHREIBUNG	MENGE	POS	CODE	BESCHREIBUNG	MENGE
1	* 4403010301	RING EDELSTAHL UWS		8	* 4403012411	RING UWS FERTIGBECKEN	
2	* 4403010302	RING WEISS UWS		8	* 4403012416	RING UWS FERTIGBECKEN PARKER-SCHI	
3	4403010312	QUETSCHVERSCHRAUBUNG LAMPE UWS IV		9	4403012412	DICHTUNG SELBSTKLEBEND UWS	
4	4403010304	O-RING UWS		10	4403010313	QUETSCHVERSCHRAUBUNG GEHÄUSE U	
5	4403010305	BASIS UWS HALOGEN		11	4403010058	LAMPE 300 W 12 V	
6	4403010306	FIXIERCLIP UWS		12	* 07856R0200	EINBAUTOPF UWS STD. M-25 ZWEI MATEF	
7	4403015002	FIXIERSET UWS JELLY STD. A2		12	* 21079R0001	EINBAUTOPF UWS STD. M-25 BECKEN	

CODE **07851, 07852, 21079**

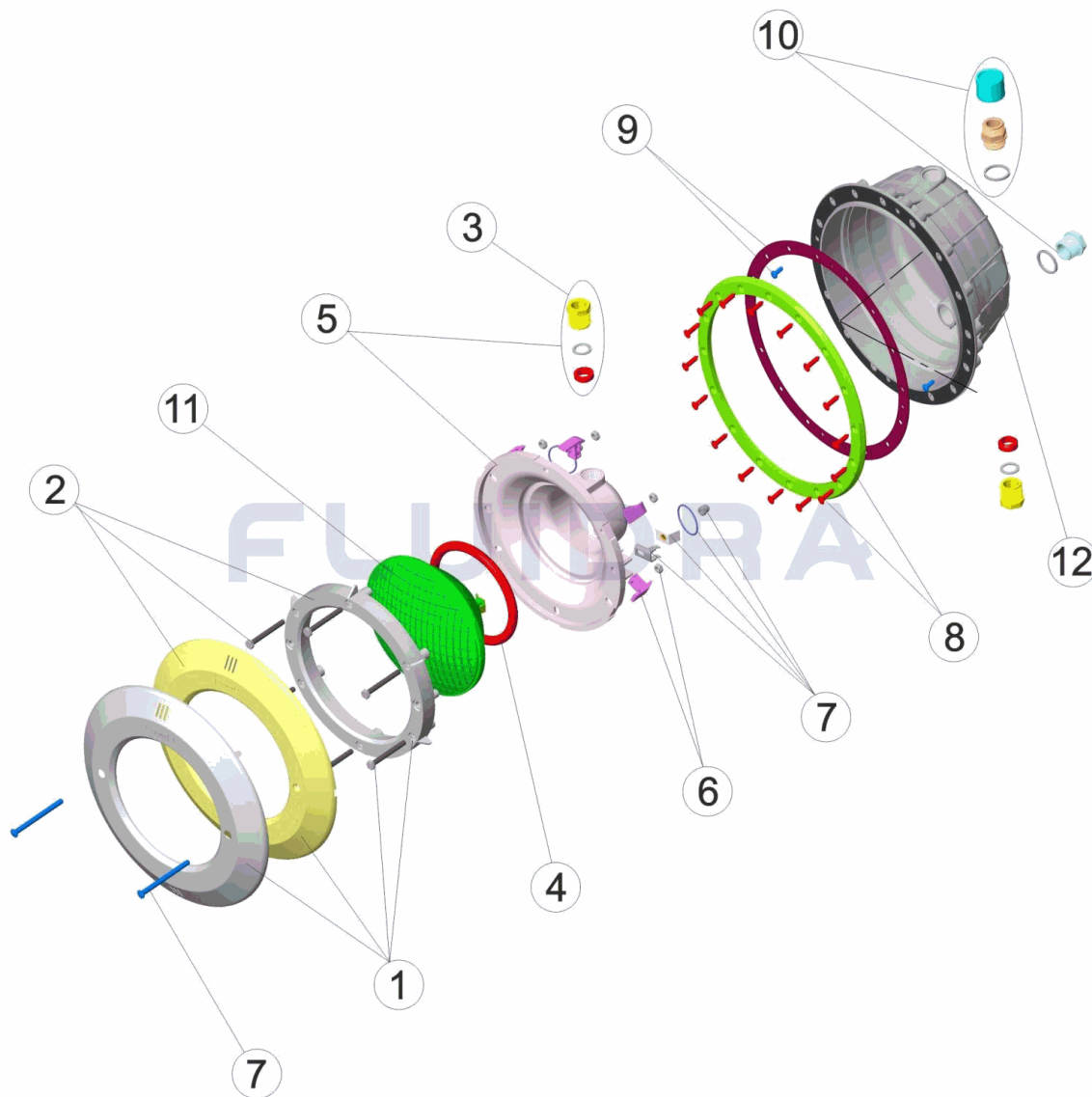
BESCHREIBUNG: **UWS STANDARD EINBAUTOPF PP. BLENDE EDELSTAHL, WEISS UND PARKE**

## HINWEISE

POS	CODE	HINWEISE
1	4403010301	FÜR: 07851
2	4403010302	FÜR: 07852, 21079
8	4403012411	FÜR: 07851, 07852
8	4403012416	FÜR: 21079
12	07856R0200	FÜR: 07851, 07852
12	21079R0001	FÜR: 21079

CODIGO 07851, 07852, 21079

DESCRIÇÃO: PROJ. STD. NICHOS PP. PL. DEC. INOX, BRANCO E PARKER



**PORTUGUES**

POS	CODIGO	DESCRIÇÃO	QUANTIDADE	POS	CODIGO	DESCRIÇÃO	QUANTIDADE
1	* 4403010301	ARO INOX PROJECTOR		8	* 4403012411	ARO PROJECTOR PISC. PRÉF.	
2	* 4403010302	ARO BRANCO PROJECTOR		8	* 4403012416	ARO PROJECTOR PISC. PRÉF. PARKER	
3	4403010312	BUCIN FOCO M-25		9	4403012412	JUNTA ADESIVA PROJECTOR	
4	4403010304	JUNTA TÓRICA PROJECTOR		10	4403010313	BUCIN CORPO M-25	
5	4403010305	FUNDO FOCO PROJECTOR		11	4403010058	BOMBILHA	
6	4403010306	CLIP FIXAÇÃO PROJECTOR		12	* 07856R0200	NICHO BIMATERIAL COM ROSCA METRIC/	
7	4403015002	CÓNJUNTO FIXAÇÃO PROJECTOR JELLY ST		12	* 21079R0001	NICHO PROJECTOR STD M-25 PIS.	

**CODIGO 07851, 07852, 21079**

**DESCRIÇÃO: PROJ. STD. NICHOS PP. PL. DEC. INOX, BRANCO E PARKER**

## OBSERVAÇÕES

POS	CODIGO	OBSERVAÇÕES
1	4403010301	PARA: 07851
2	4403010302	PARA: 07852, 21079
8	4403012411	PARA: 07851, 07852
8	4403012416	PARA: 21079
12	07856R0200	PARA: 07851, 07852
12	21079R0001	PARA: 21079