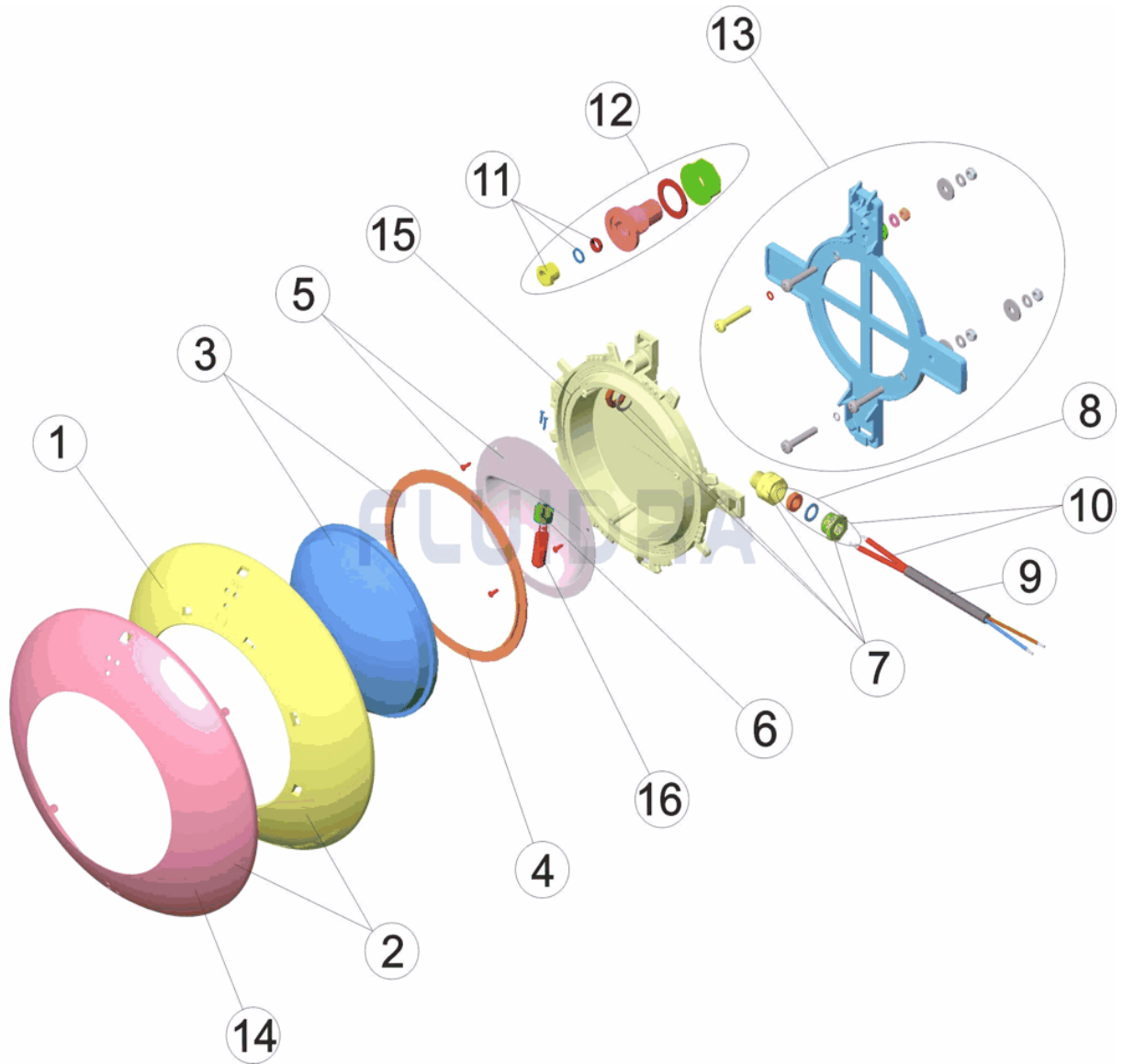


CODIGO 21627, 35667

DESCRIPCION: PROYECTOR EXTRA PLANO PISC. PREFABRICADA ARO BLANCO/INOX



ESPAÑOL

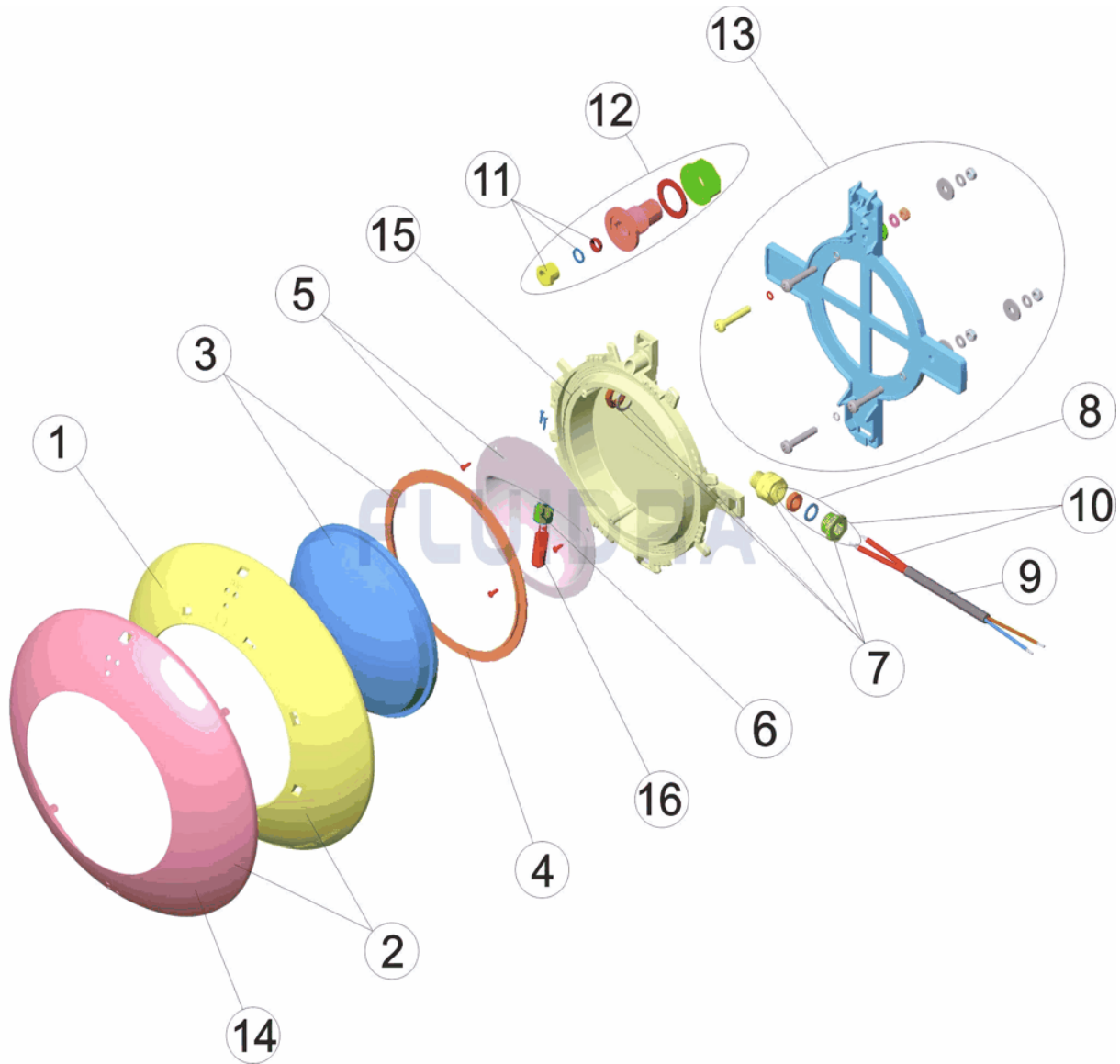
| POS | CODIGO | DESCRIPCION | CANTIDAD | POS | CODIGO | DESCRIPCION | CANTIDAD |
|-----|--------------|------------------------------------|----------|-----|--------------|-----------------------------------|----------|
| 1 | * 4403011901 | EMBELLECEDOR PROYECTOR PLANO | | 9 | 4403011905 | CABLE PROYECTOR | |
| 2 | * 4403012301 | CJTO.EMBELLECED.INOX PROJEC.EXTRA | | 10 | 4403015405 | CABLE PROYECTOR, PRENSAESTOPAS | |
| 3 | 4403012303 | LENTE TRANSPARENTE + JUNTA | | 11 | 4403012704 | PRENSAESTOPAS PG-9 | |
| 4 | 4403010102 | JUNTA SILICONA PROYECTOR | | 12 | 4403012307 | PASACABLES | |
| 5 | 4403011903 | REFLECTOR PORTALAMPARAS | | 13 | 4403012305 | SOPORTE PROYECTOR | |
| 6 | 4403011407 | PORTALAMPARAS | | 14 | * 4403012304 | EMBELLECEDOR INOX PROYECTOR EXTR/ | |
| 7 | 4403012302 | CJTO. PRENSAESTOPAS M-16 KT 19,5X2 | | 15 | 4403011908 | CUERPO PROYECTOR | |
| 8 | 4403014101 | CJTO. TAPON PRENSAESTOPAS TR 12X2 | | 16 | 00371 | LAMPARA HALOGENA 12 V. 100 W. | |

CODIGO **21627, 35667**DESCRIPCION: **PROYECTOR EXTRA PLANO PISC. PREFABRICADA ARO BLANCO/INOX****OBSERVACIONES**

| POS | CODIGO | OBSERVACIONES |
|-----|--------------|---------------|
| 1 | * 4403011901 | PARA: 21627 |
| 2 | * 4403012301 | PARA: 35667 |
| 14 | * 4403012304 | PARA: 35667 |

CODE 21627, 35667

DESCRIPTION: PROJECTEUR EXTRA-PLAT PISC. PRÉFABRIQUÉE ENJOLIVEUR BLANC/I



FRANCAIS

| POS | CODE | DESCRIPTION | QUANTITE | POS | CODE | DESCRIPTION | QUANTITE |
|-----|--------------|-------------------------------------|----------|-----|--------------|--------------------------------|----------|
| 1 | * 4403011901 | ENJOLIVEUR PROJECTEUR PLAT | | 9 | 4403011905 | CABLE DE PROJECTEUR | |
| 2 | * 4403012301 | ENSEMBLE ANNEAU ENJOLIVER INOX | | 10 | 4403015405 | CABLE PROJECTEUR PRESSE ÉTOUPE | |
| 3 | 4403012303 | LENTE PROJECTEUR + JOINT | | 11 | 4403012704 | PRESSE ÉTOUPE PG-9 | |
| 4 | 4403010102 | JOINT SILICONE PROJECTEUR | | 12 | 4403012307 | PASSE CABLE | |
| 5 | 4403011903 | REFLECTEUR PORTE LAMPE | | 13 | 4403012305 | SUPPORT PROJECTEUR | |
| 6 | 4403011407 | PORTE-LAMPE | | 14 | * 4403012304 | ANNEAU ENJOLIVER INOX | |
| 7 | 4403012302 | ENSEMBLE PRESSE ÉTOUPE M-16 KT 19,€ | | 15 | 4403011908 | CORPS DU PROJECTEUR | |
| 8 | 4403014101 | BOUCHON PRESSE ÉTOUPE 12X2 | | 16 | 00371 | LAMPE 12 V. 100 W. | |

CODE **21627, 35667**

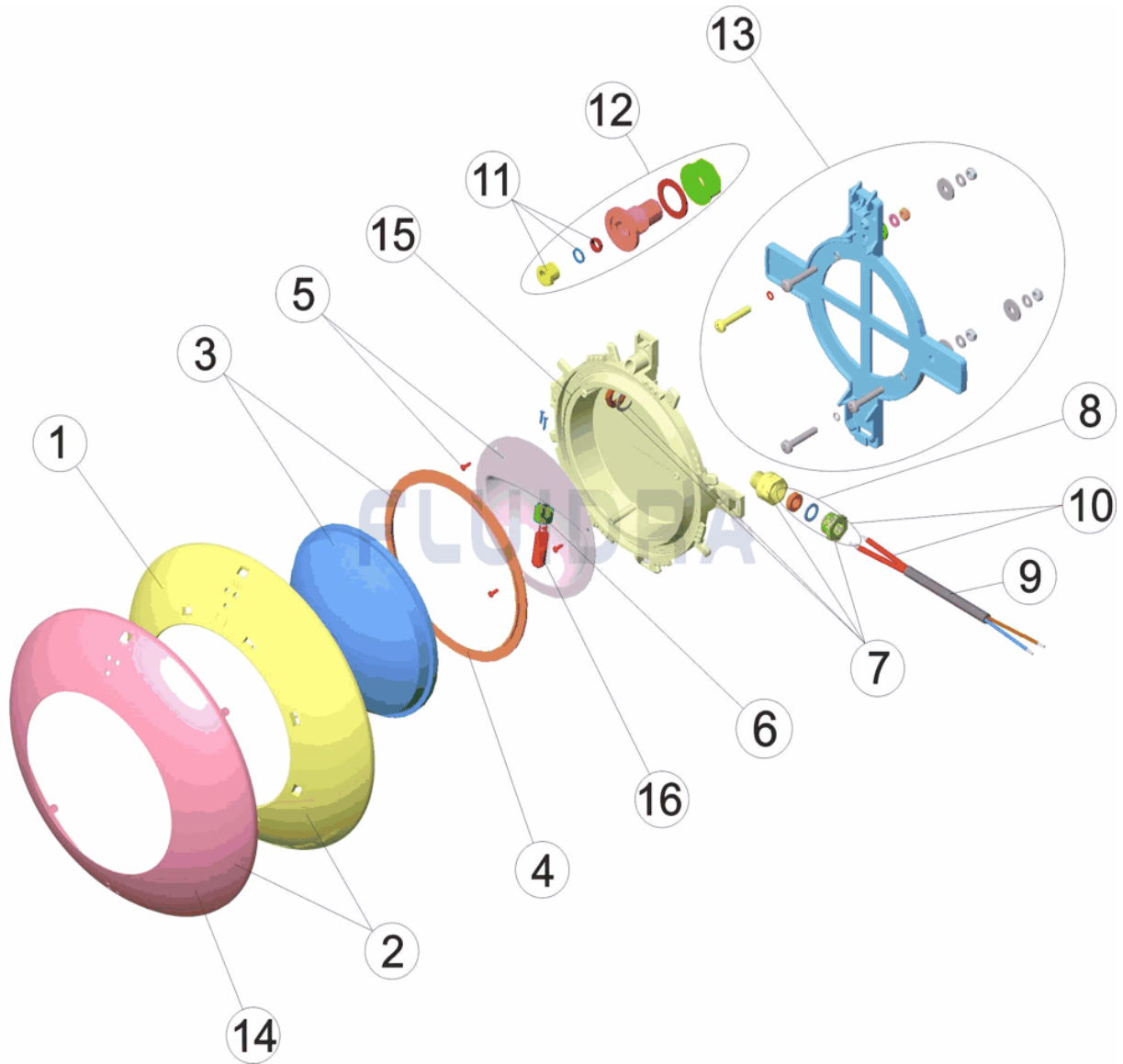
DESCRIPTION: **PROJECTEUR EXTRA-PLAT PISC. PRÉFABRIQUÉE ENJOLIVEUR BLANC/I**

OBSERVATIONS

| POS | CODE | OBSERVATIONS |
|-----|--------------|--------------|
| 1 | * 4403011901 | POUR: 21627 |
| 2 | * 4403012301 | POUR: 35667 |
| 14 | * 4403012304 | POUR: 35667 |

CODE 21627, 35667

DESCRIPTION: EXTRA-FLAT LIGHT PREFABRICATED POOL WHITE RING / STAINLESS ST



ENGLISH

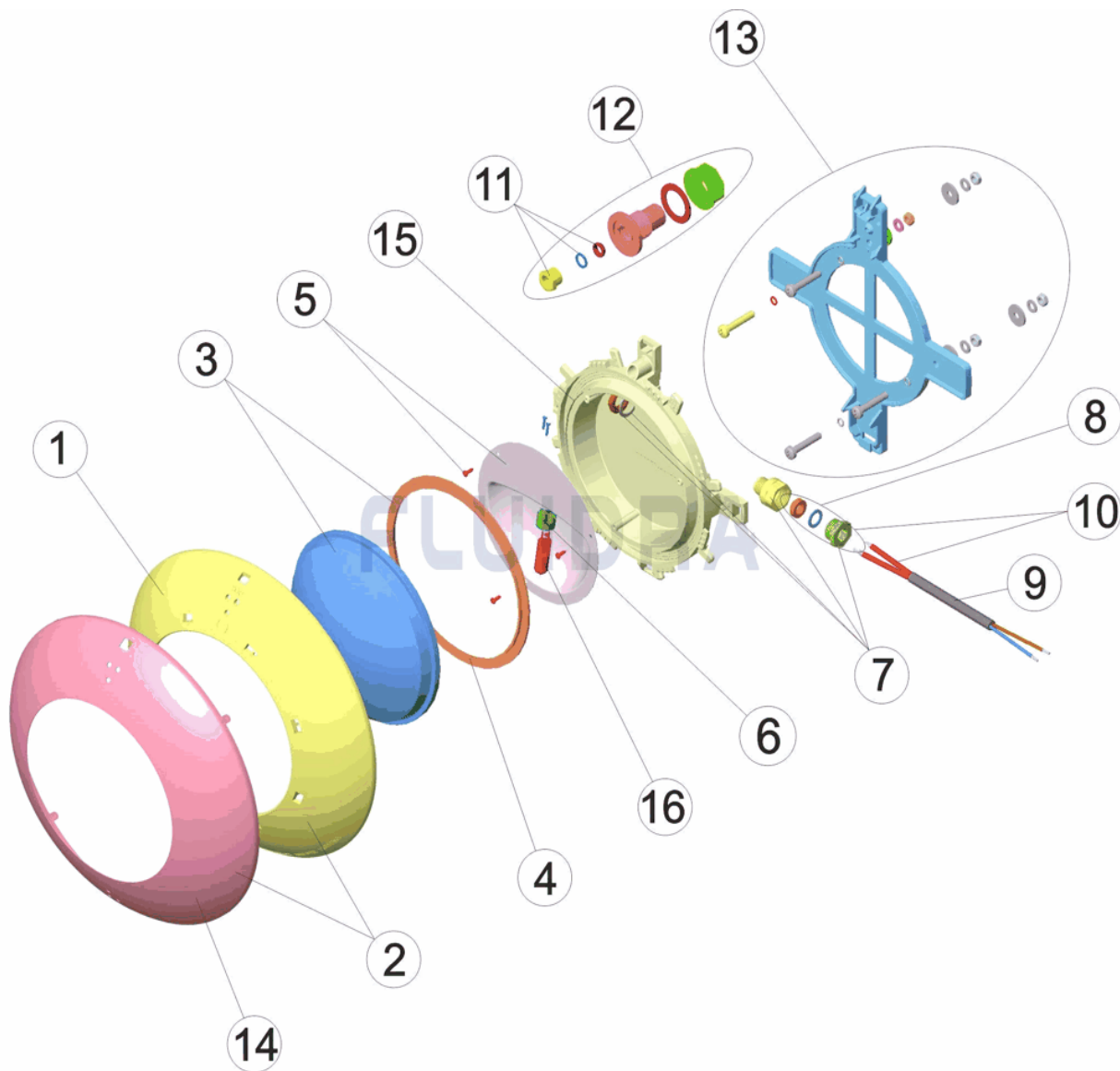
| POS | CODE | DESCRIPTION | QUANTITY | POS | CODE | DESCRIPTION | QUANTITY |
|-----|--------------|-------------------------------|----------|-----|--------------|------------------------------------|----------|
| 1 | * 4403011901 | FLAT LIGHT FACEPLATE | | 9 | 4403011905 | LIGHT CABLE | |
| 2 | * 4403012301 | SET RUSTPROOF DECORATIVE RING | | 10 | 4403015405 | PROJECTOR CABLE, PACKING GLANDS PR | |
| 3 | 4403012303 | CLEAR LENS + GASKET | | 11 | 4403012704 | PACKING GLAND PG-9 | |
| 4 | 4403010102 | LIGHT SILICON GASKET | | 12 | 4403012307 | CONDUIT CONNECTOR | |
| 5 | 4403011903 | LAMPHOLDER REFLECTOR PLATE | | 13 | 4403012305 | LIGHT SUPPORT | |
| 6 | 4403011407 | LAMP HOLDER | | 14 | * 4403012304 | RUSTPROOF DECORATIVE RING | |
| 7 | 4403012302 | GLAND SEAL M-16 KT 19,5X2 | | 15 | 4403011908 | LIGHT BODY | |
| 8 | 4403014101 | KIT PLUG PACKING GLAND 12X2 | | 16 | 00371 | LIGHTBULB 12 V. 100 W. | |

CODE **21627, 35667**DESCRIPTION: **EXTRA-FLAT LIGHT PREFABRICATED POOL WHITE RING / STAINLESS ST****OBSERVATIONS**

| POS | CODE | OBSERVATIONS |
|-----|--------------|--------------|
| 1 | * 4403011901 | FOR: 21627 |
| 2 | * 4403012301 | FOR: 35667 |
| 14 | * 4403012304 | FOR: 35667 |

CODICE 21627, 35667

DESCRIZIONE: PROIETTORE EXTRA PIANO PISCINA PREFABBRICATA ANELLO BIANCO/I



ITALIANO

| POS | CODICE | DESCRIZIONE | QUANTITA' | POS | CODICE | DESCRIZIONE | QUANTITA' |
|-----|--------------|---------------------------------|-----------|-----|--------------|-----------------------------|-----------|
| 1 | * 4403011901 | ANELLO FRONTALE FARO PIATTO | | 9 | 4403011905 | CAVO FARO | |
| 2 | * 4403012301 | KIT ANELLO ORNAMENTALE INOSSID. | | 10 | 4403015405 | CAVO FARO, PRESSACAVO | |
| 3 | 4403012303 | LENTE PROIETTORE + GUERNIZIONE | | 11 | 4403012704 | PRESSACAVO PG-9 | |
| 4 | 4403010102 | GUARNIZIONE SILICONE FARO | | 12 | 4403012307 | PRESSACAVO | |
| 5 | 4403011903 | RIFLETTORE PORTALAMPADE | | 13 | 4403012305 | SUPPORTO FARO | |
| 6 | 4403011407 | PORTALAMPADE | | 14 | * 4403012304 | ANELLO ORNAMENTALE INOSSID. | |
| 7 | 4403012302 | KIT PRESSACAVO M-16 KT 19,5X2 | | 15 | 4403011908 | CORPO FARO | |
| 8 | 4403014101 | KIT TAPPO | | 16 | 00371 | LAMPADINA 12 V. 100 W. | |

CODICE 21627, 35667

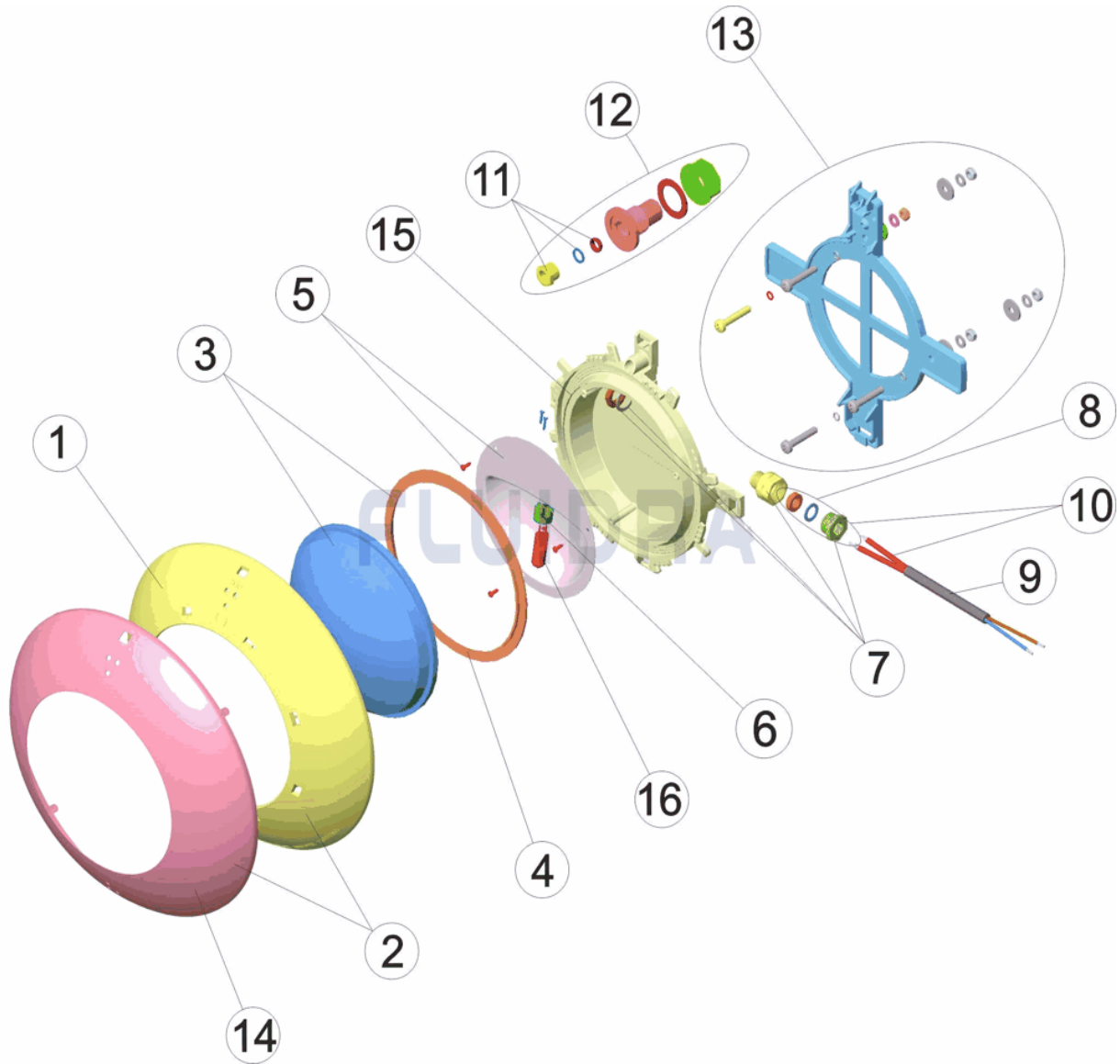
DESCRIZIONE: PROIETTORE EXTRA PIANO PISCINA PREFABBRICATA ANELLO BIANCO/I

OSSERVAZIONI

| POS | CODICE | OSSERVAZIONI |
|-----|--------------|--------------|
| 1 | * 4403011901 | PER: 21627 |
| 2 | * 4403012301 | PER: 35667 |
| 14 | * 4403012304 | PER: 35667 |

CODE 21627, 35667

BESCHREIBUNG: UWS EXTRAFLACH FERTIGBECKEN RING WEISS/EDELSTAHL



DEUTSCH

| POS | CODE | BESCHREIBUNG | MENGE | POS | CODE | BESCHREIBUNG | MENGE |
|-----|--------------|------------------------------------|-------|-----|--------------|-----------------------------------|-------|
| 1 | * 4403011901 | BLLENDE UWS FLACH | | 9 | 4403011905 | UWS-KABEL | |
| 2 | * 4403012301 | SET BLENDE EDELSTAHL UWS EXTRA FLA | | 10 | 4403015405 | UWS-KABEL, QUETSCHVERSCHRAUBUNG | |
| 3 | 4403012303 | LINSE TRANSPARENT UND DICHUNG | | 11 | 4403012704 | QUETSCHVERSCHRAUBUNG PG9 | |
| 4 | 4403010102 | DICHUNG SILIKON UWS | | 12 | 4403012307 | KABELDURCHFÜHRUNG | |
| 5 | 4403011903 | REFLEKTOR LAMPENFASSUNG | | 13 | 4403012305 | HALTERUNG UWS | |
| 6 | 4403011407 | LAMPENFASSUNG | | 14 | * 4403012304 | BLLENDE EDELSTAHL UWS EXTRA FLACH | |
| 7 | 4403012302 | SET QUETSCHVERSCHRAUBUNG M-16 KT | | 15 | 4403011908 | GEHÄUSE UWS | |
| 8 | 4403014101 | STOPFENSET QUETSCHVERSCHRAUBUN | | 16 | 00371 | LAMPE HALOGEN 12 V 100 W | |

CODE **21627, 35667**

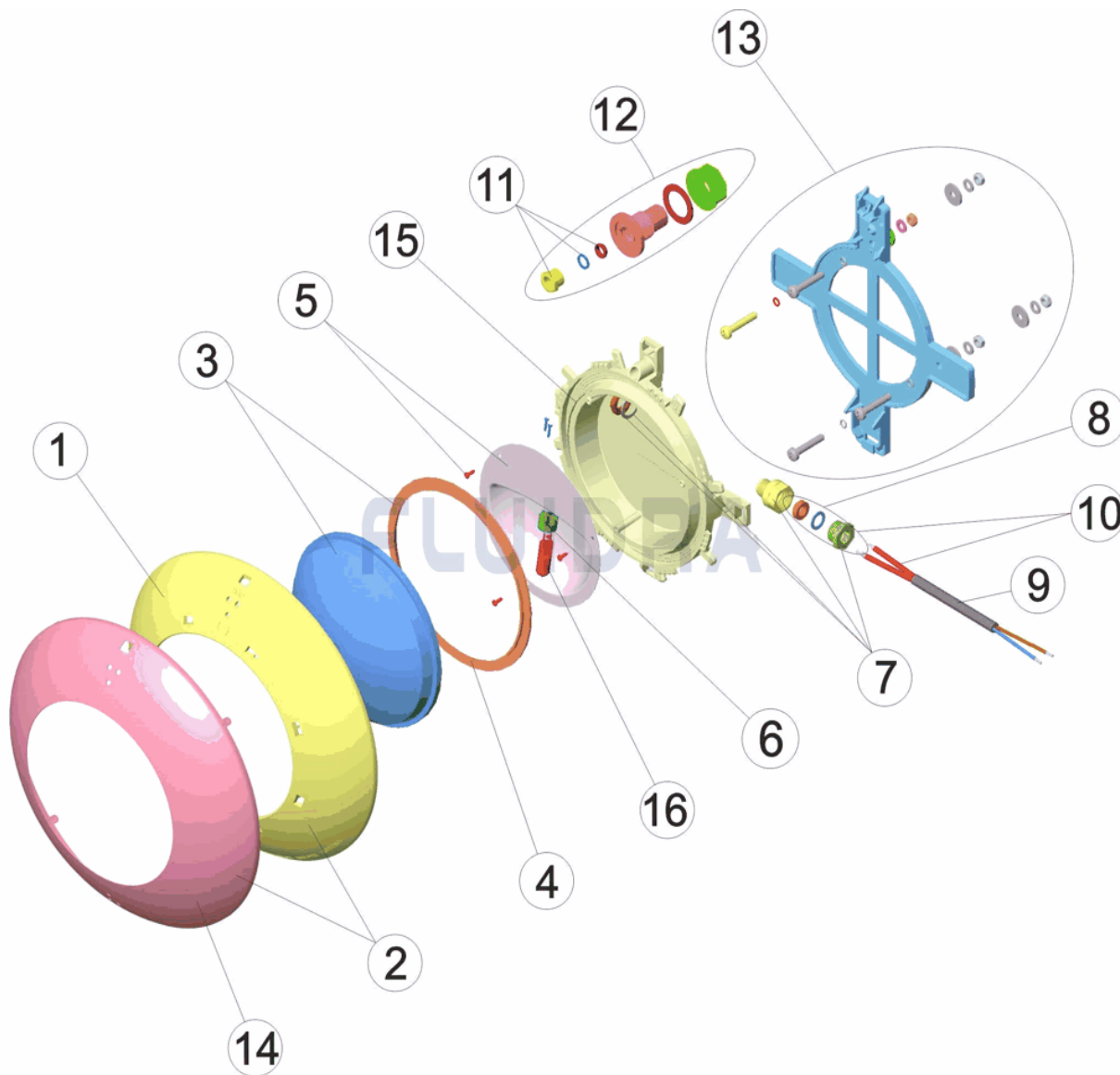
BESCHREIBUNG: **UWS EXTRAFLACH FERTIGBECKEN RING WEISS/EDELSTAHL**

HINWEISE

| POS | CODE | HINWEISE |
|-----|--------------|------------|
| 1 | * 4403011901 | FÜR: 21627 |
| 2 | * 4403012301 | FÜR: 35667 |
| 14 | * 4403012304 | FÜR: 35667 |

CODIGO 21627, 35667

DESCRIÇÃO: PROJECTOR EXTRA PLANO PISC. PRÉ-FABRICADA ARO BRANCO/INOX



PORTUGUES

| POS | CODIGO | DESCRIÇÃO | JANTIDADE | POS | CODIGO | DESCRIÇÃO | JANTIDADE |
|-----|--------------|----------------------------------|-----------|-----|--------------|---------------------------------|-----------|
| 1 | * 4403011901 | EMBELEZADOR PROJECTOR PLANO | | 9 | 4403011905 | CABO PROJECTOR | |
| 2 | * 4403012301 | CJTO. ANEL DECORATIVO INOXIDABLE | | 10 | 4403015405 | CABO P'ROJECTOR BUCIM PROJECTOR | |
| 3 | 4403012303 | LENTE TRANSPARENTE + JUNTA | | 11 | 4403012704 | BUCIN PG-9 | |
| 4 | 4403010102 | JUNTA SILICONE PROTECTOR | | 12 | 4403012307 | PASSA-CABOS | |
| 5 | 4403011903 | REFLECTOR PORTA-LÂMPADAS | | 13 | 4403012305 | SUPORTE PROJECTOR | |
| 6 | 4403011407 | PORTA-LÂMPADA | | 14 | * 4403012304 | ANEL DECORATIVO INOXIDABLE | |
| 7 | 4403012302 | CONJUNTO BUCIM M-16 KT 19,5X2 | | 15 | 4403011908 | CORPO PROJECTOR | |
| 8 | 4403014101 | CJTO. TAMPÃO VEDANTE 12X2 | | 16 | 00371 | BOMBILHA 12 V. 100 W. | |

CODIGO 21627, 35667

DESCRIÇÃO: PROJECTOR EXTRA PLANO PISC. PRÉ-FABRICADA ARO BRANCO/INOX

OBSERVACÕES

| POS | CODIGO | OBSERVACÕES |
|-----|--------------|-------------|
| 1 | * 4403011901 | PARA: 21627 |
| 2 | * 4403012301 | PARA: 35667 |
| 14 | * 4403012304 | PARA: 35667 |