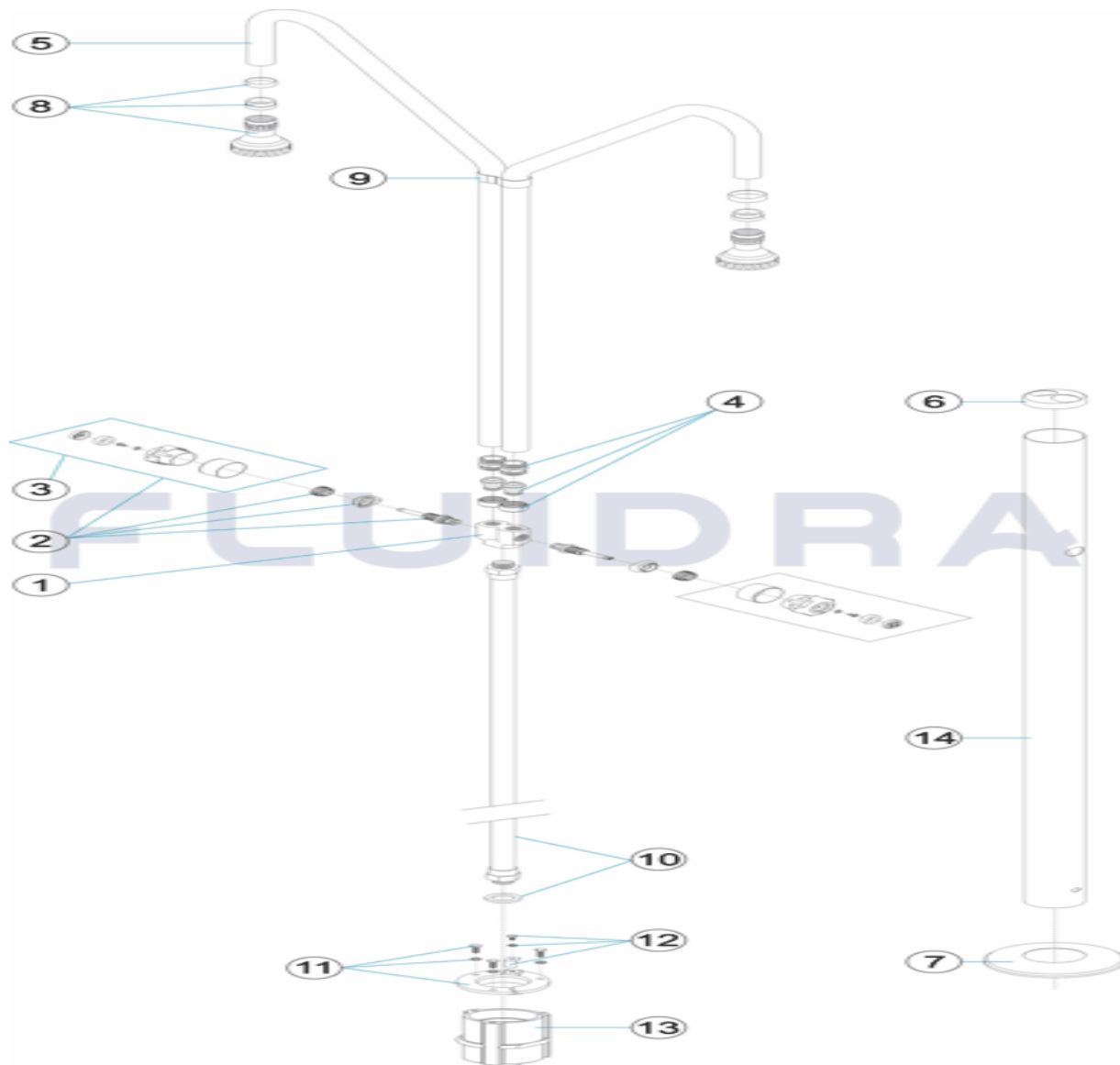


CODIGO **00098**

DESCRIPCION: **DUCHA 2 ROCIADORES Y 2 VALVULAS TUBO D. 63**

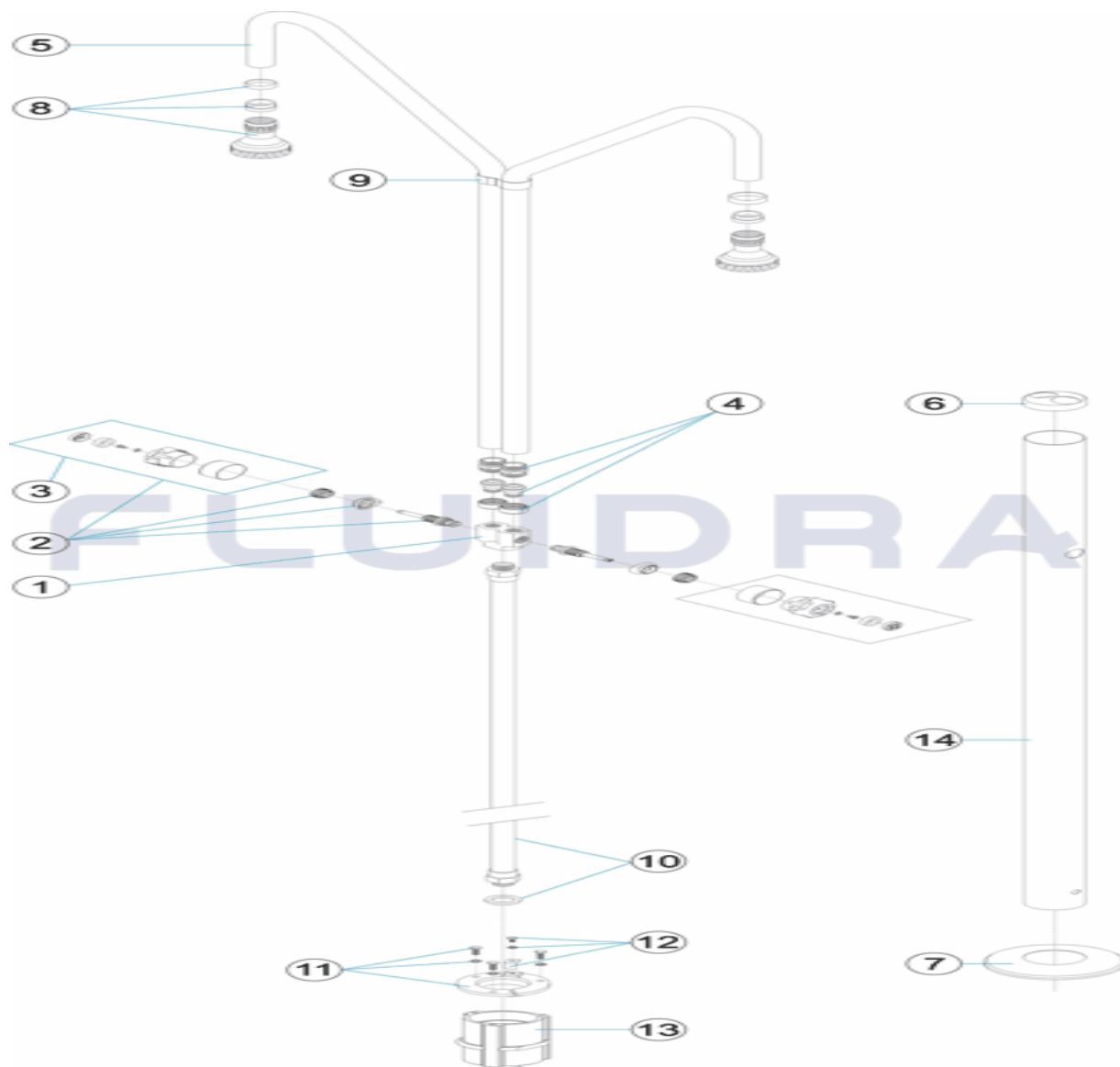


ESPAÑOL

POS	CODIGO	DESCRIPCION	CANTIDAD	POS	CODIGO	DESCRIPCION	CANTIDAD
1	4401040701	COLECTOR 2 VIAS 2 ROCIADORES		8	4401040104	PIÑA DUCHA	
2	4401040602	POMO PLASTICO CON ADAPTADOR		9	4401040710	TIRANTE BRAZOS DUCHA	
3	4401040103	POMO PLASTICO		10	4401040110	TUBO 1/2'	
4	4401040704	CJTO. ENLACE 3 PIEZAS		11	4401042810	FIJACION ANCLAJE DUCHA D 63	
5	4401040105	BRAZO DUCHA		12	4401040903	TOMA DE TIERRA	
6	4401040707	TAPETA EMBELL. SUP. 2 BRAZOS		13	4401042811	CUERPO ANCLAJE DUCHA	
7	4401040507	TAPETA EMBELLECEDORA INFERIOR		14	00096R0001	TUBO EXTERIOR 63	

CODE **00098**

DESCRIPTION: **DOUCHE 2 POMMEUX ET 2 ROBINETS TUBE D. 63**

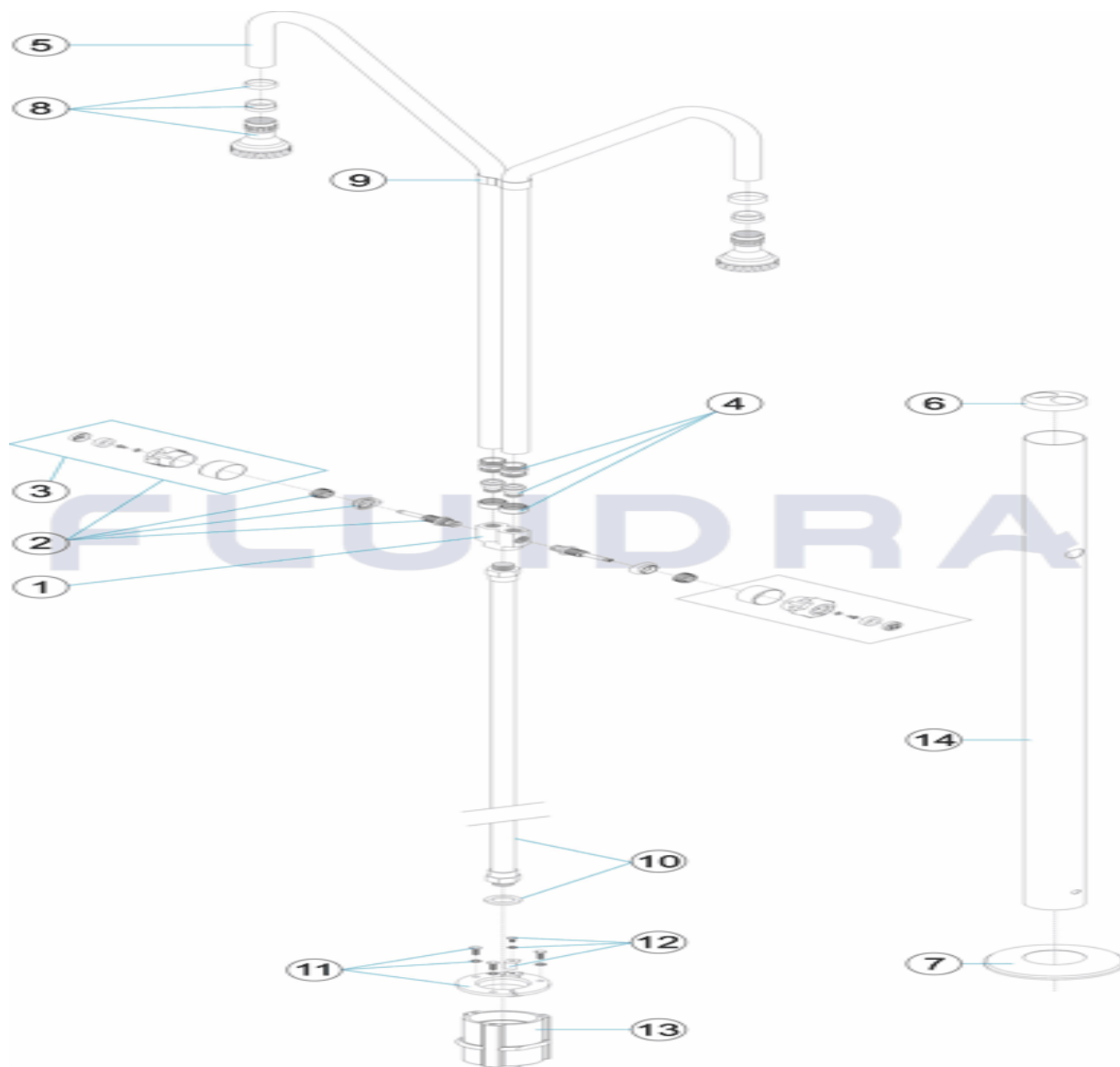


FRANCAIS

POS	CODE	DESCRIPTION	QUANTITE	POS	CODE	DESCRIPTION	QUANTITE
1	4401040701	RÉPORTITEU 2 ROBINETS		8	4401040104	POMMEAU DE DOUCHE	
2	4401040602	ROBINET PLASTIQUE AVEC ADAPTEUR		9	4401040710	COLLIER DE MANTIEN EXTÉRIEUR DE TUE	
3	4401040103	ROBINET PLASTIQUE		10	4401040110	TUBE 1/2'	
4	4401040704	UNION 3 PIECES		11	4401042810	FIXATION ANCRAGE DOUCHE D 63	
5	4401040105	BRAS DE DOUCHE		12	4401040903	PRISE DE TERRE	
6	4401040707	ENJOLIVEUR SUPERIEUR 2 BRAS.		13	4401042811	CORPS D'ANCRAGE DE DOUCHE	
7	4401040507	ENJOLIEVEUR INFERIEUR		14	00096R0001	TUBE EXTERIEUR D.63	

CODE **00098**

DESCRIPTION: **SHOWER 2 SHOWER HEADS AND 2 VALVES D.63 PIPE**

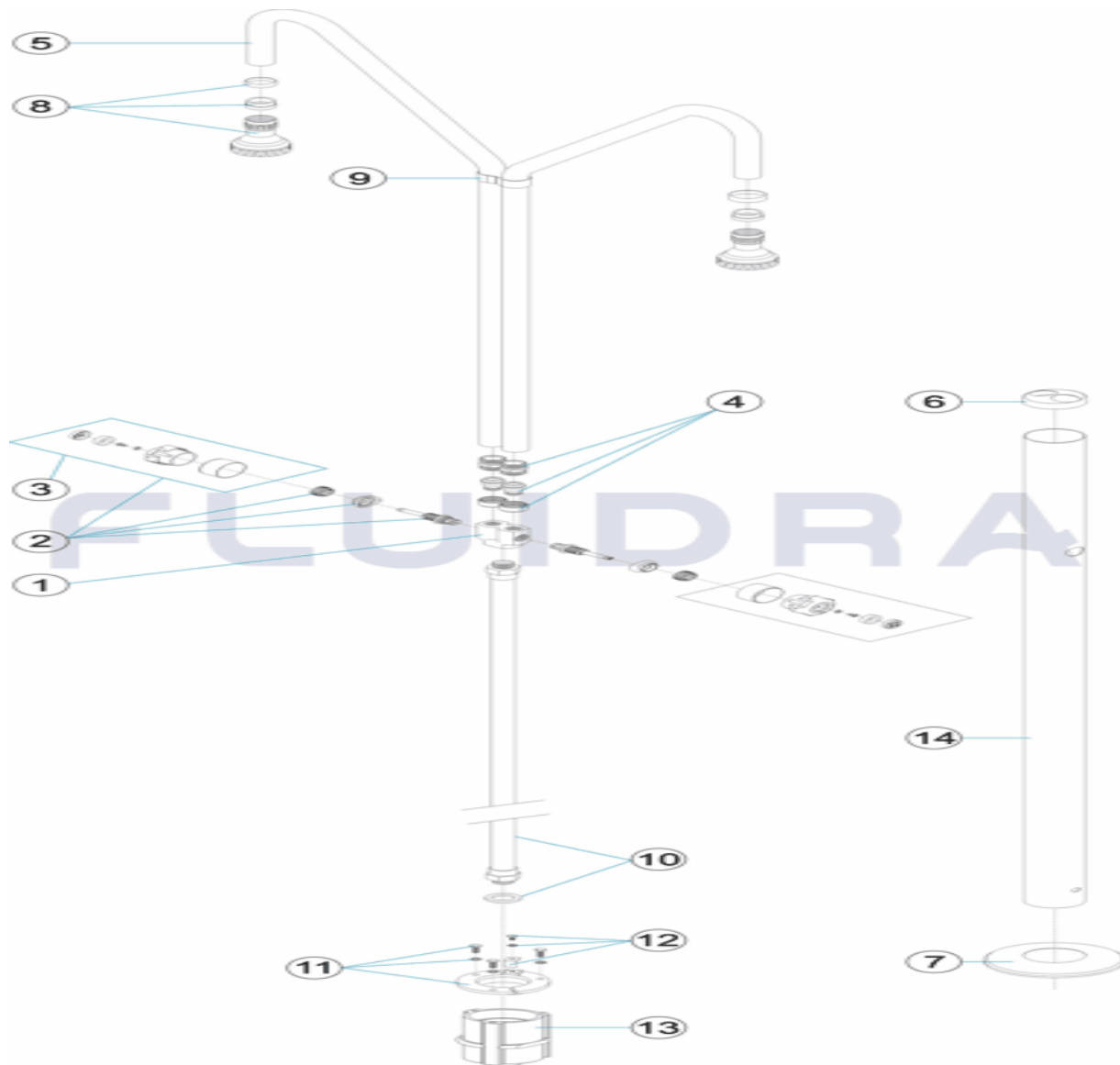


ENGLISH

POS	CODE	DESCRIPTION	QUANTITY	POS	CODE	DESCRIPTION	QUANTITY
1	4401040701	2 WAY 2 VALVE MANIFOLD		8	4401040104	SHOWER HEAD	
2	4401040602	VALVE HANDLE WITH ADAPTOR		9	4401040710	SHOWER ARMS HOLDER	
3	4401040103	VALVE HANDLE		10	4401040110	1/2' PIPE	
4	4401040704	3 PIECE UNION		11	4401042810	SHOWER ANCHOR D 63	
5	4401040105	SHOWER ARM		12	4401040903	EARTH CONNECTION	
6	4401040707	2 ARM SUPPORT ESCUTCHEON PLATE		13	4401042811	SHOWER ANCHORING FIXTURE	
7	4401040507	BOTTOM ESCUTCHEON PLATE		14	00096R0001	TUBE EXTERNAL 63MM	

CODICE **00098**

DESCRIZIONE: **DOCCIA 2 SPRUZZATORI E 2 VALVOLE TUBO D. 63**

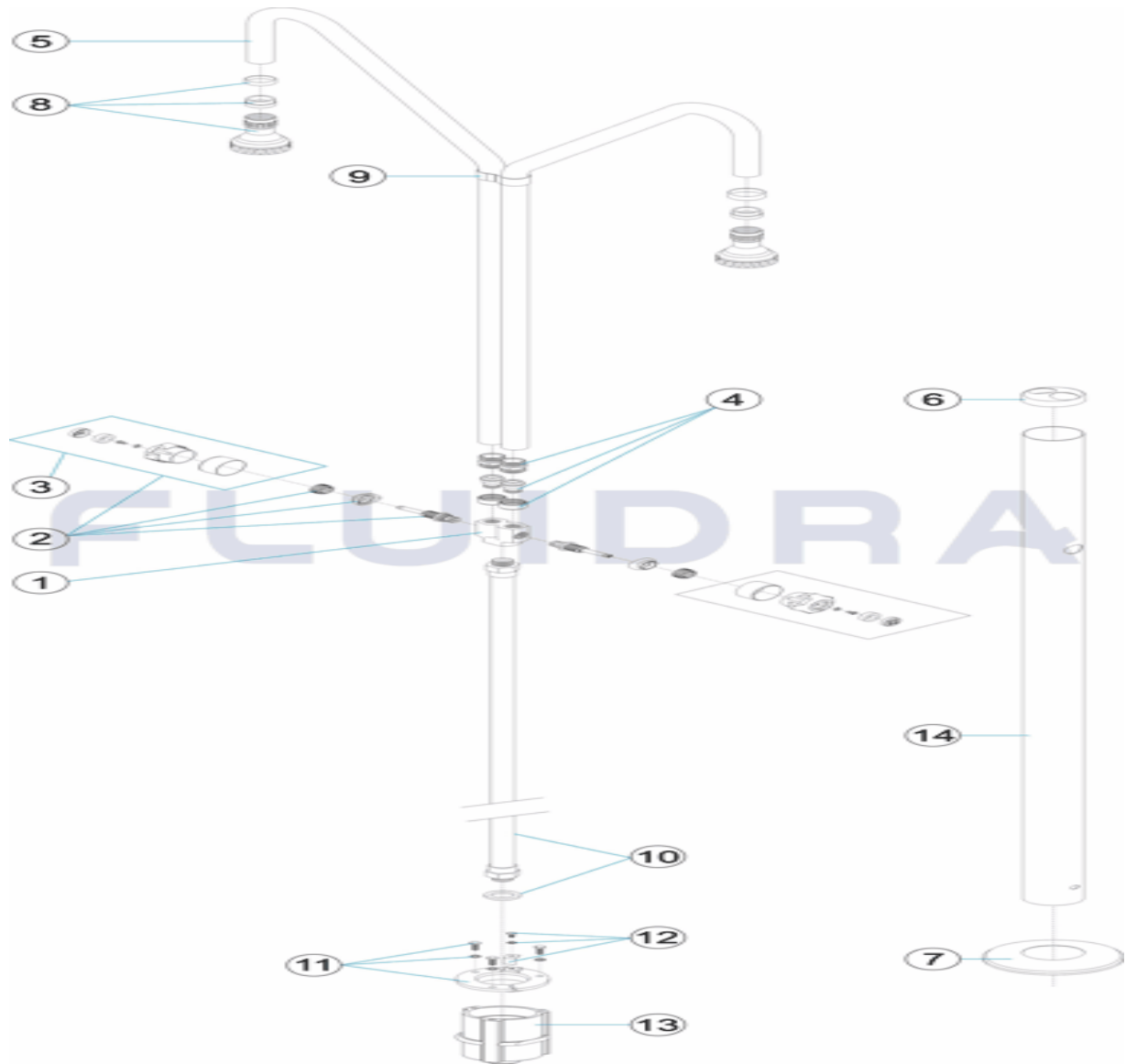


ITALIANO

POS	CODICE	DESCRIZIONE	QUANTITA'	POS	CODICE	DESCRIZIONE	QUANTITA'
1	4401040701	COLLETTORE 2 VIE 2 SOFFIONI		8	4401040104	DIFFUSORE DOCCIA	
2	4401040602	POMELLO PLASTICA CON ADATTATORE		9	4401040710	TIRANTE BRACCIO DOCCIA	
3	4401040103	POMELLO IN PLASTICA		10	4401040110	TUBO 1/2'	
4	4401040704	KIT BOCCHETTONE		11	4401042810	FISSAGGIO ANCORAGGIO DOCCIA D 63	
5	4401040105	BRACCIO DOCCIA		12	4401040903	PRESA A TERRA	
6	4401040707	COPRIFLANGIA SUPERIORE 2 BRACCI		13	4401042811	CORPO ANCORAGGIO DOCCIA	
7	4401040507	COPRIFLANGIA INFERIORE		14	00096R0001	TUBO ESTERNO D.63	

CODE **00098**

BESCHREIBUNG: **DUSCHE 2 DUSCHKÖPFE UND 2 VENTILE ROHR D. 63**

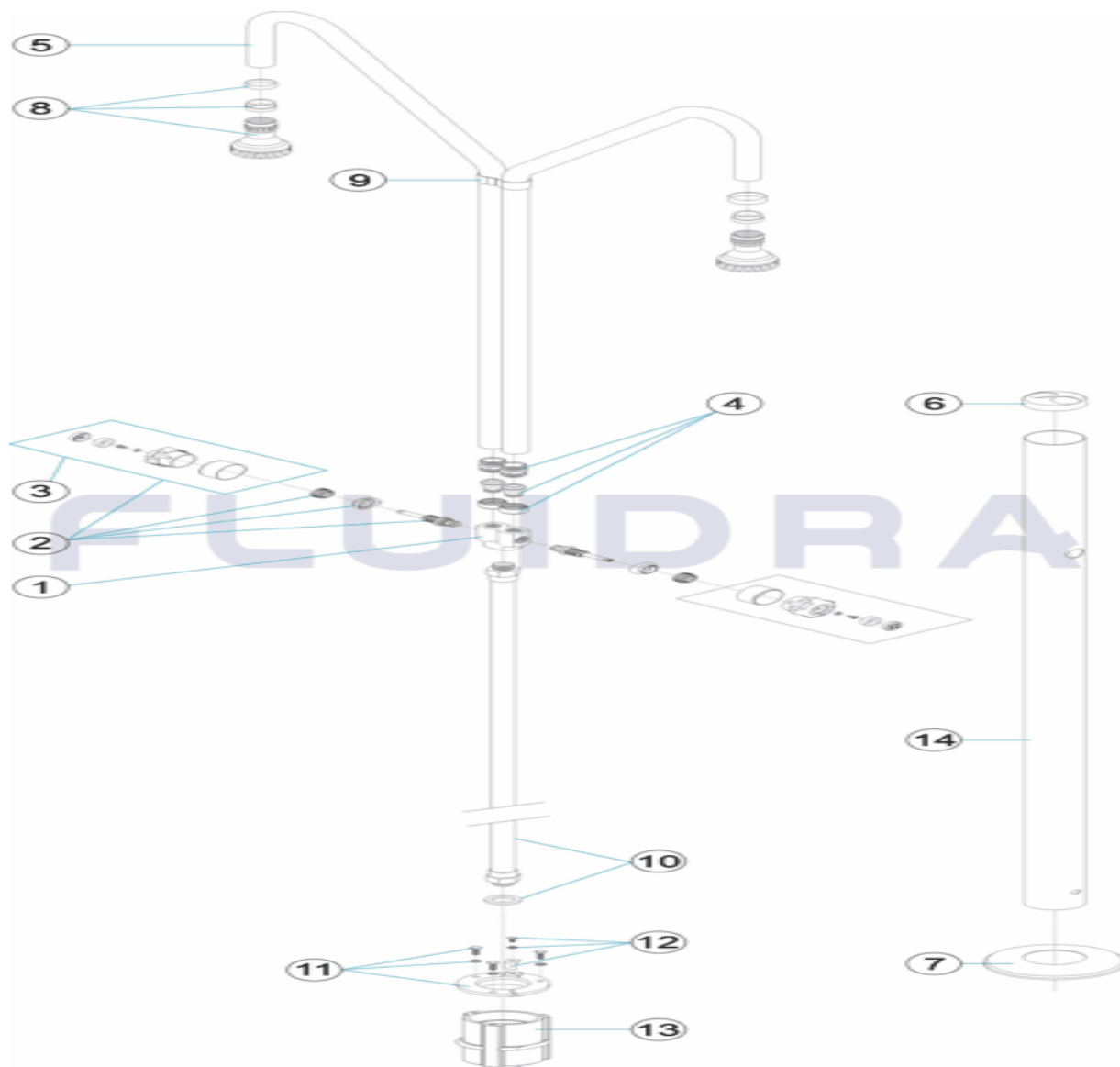


DEUTSCH

POS	CODE	BESCHREIBUNG	MENGE	POS	CODE	BESCHREIBUNG	MENGE
1	4401040701	2-WEGE-SAMMELROHR 2 DUSCHKÖPFE		8	4401040104	DUSCHKOPF	
2	4401040602	DREHGRIFF KUNSTSTOFF MIT ADAPTER		9	4401040710	ZUGHALTERUNG DUSCHARME	
3	4401040103	DREHGRIFF KUNSTSTOFF		10	4401040110	ROHR 1/2'	
4	4401040704	SET ANSCHLUSS 3 STK		11	4401042810	FIXIERUNG DUSCHVERANKERUNG D. 63	
5	4401040105	DUSCHARM		12	4401040903	ERDUNG	
6	4401040707	DEKO-ABSCHLUSSRING OBEN 2 ARME		13	4401042811	VERANKERUNG DUSCH EINHEIT	
7	4401040507	DEKO-ABSCHLUSSRING UNTEN		14	00096R0001	AUSSENROHR 63	

CODIGO **00098**

DESCRIÇÃO: **DUCHE 2 DIFUSORES 2 VÁLVULAS TUBO D. 63**



PORTUGUES

POS	CODIGO	DESCRIÇÃO	JANTIDADE	POS	CODIGO	DESCRIÇÃO	JANTIDADE
1	4401040701	COLECTOR 2 VIAS 2 REGADORES		8	4401040104	REGADOR CHUVEIRO	
2	4401040602	MANIPULO PLÁSTICO COM ADAPTADOR		9	4401040710	TIRANTE BRAÇOS CHUVEIRO	
3	4401040103	MANIPULO PLÁSTICO		10	4401040110	TUBO 1/2'	
4	4401040704	CONJUNTO UNIÃO 3 PEÇAS		11	4401042810	FIXAÇÃO ÂNCORA CHUVEIRO D 63	
5	4401040105	BRAÇO CHUVEIRO		12	4401040903	LIGAÇÃO A TERRA	
6	4401040707	TAMPA EMBELEZADORA SUP. 2 BRAÇOS		13	4401042811	CORPO ÂNCORA CHUVEIRO	
7	4401040507	TAMPA EMBELEZADORA INFERIOR		14	00096R0001	TUBO EXTERIOR 63	