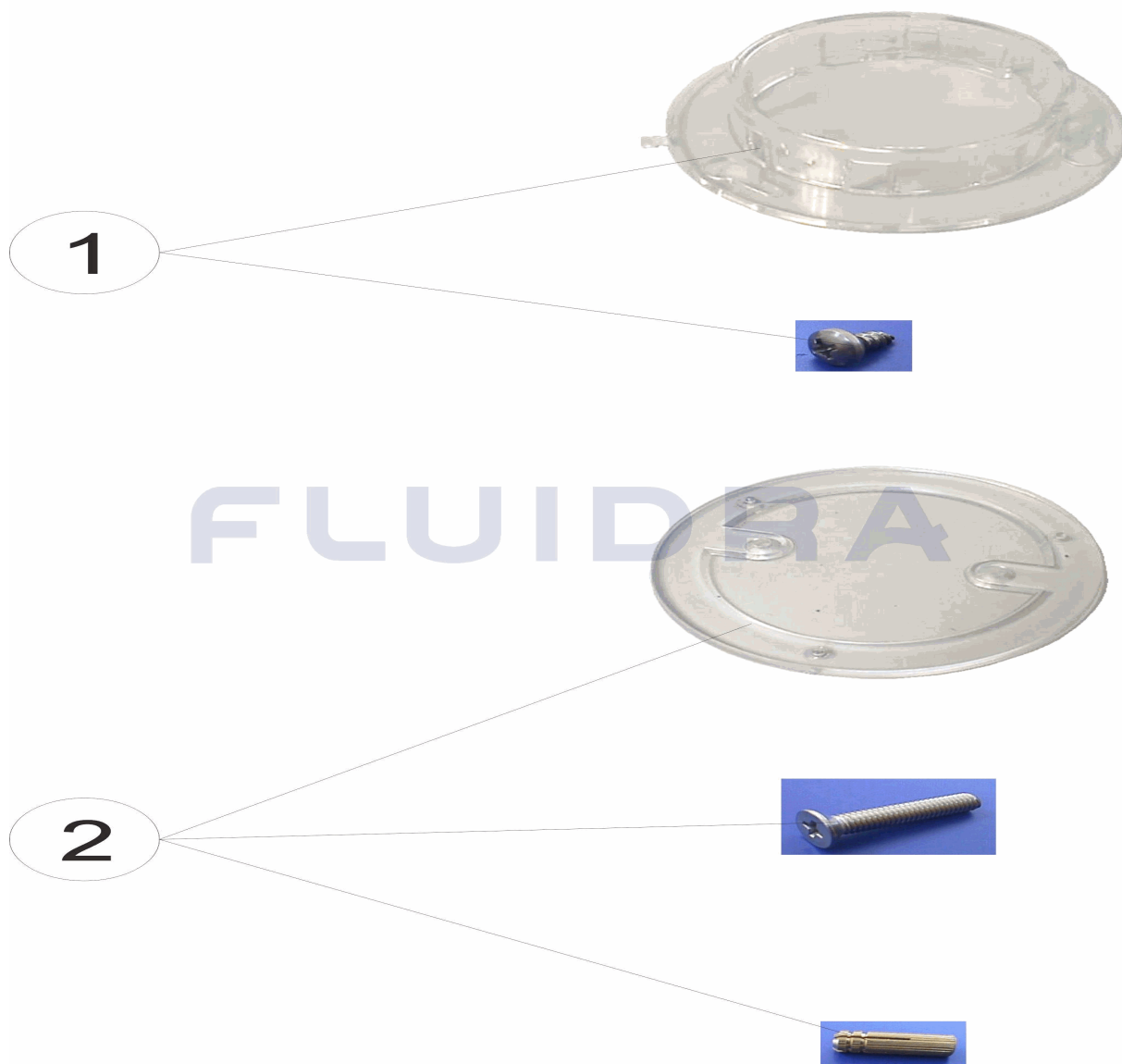


CODIGO **25356**

DESCRIPCION: **DOSIFICADOR ATORNILLADO LAVAPIES**

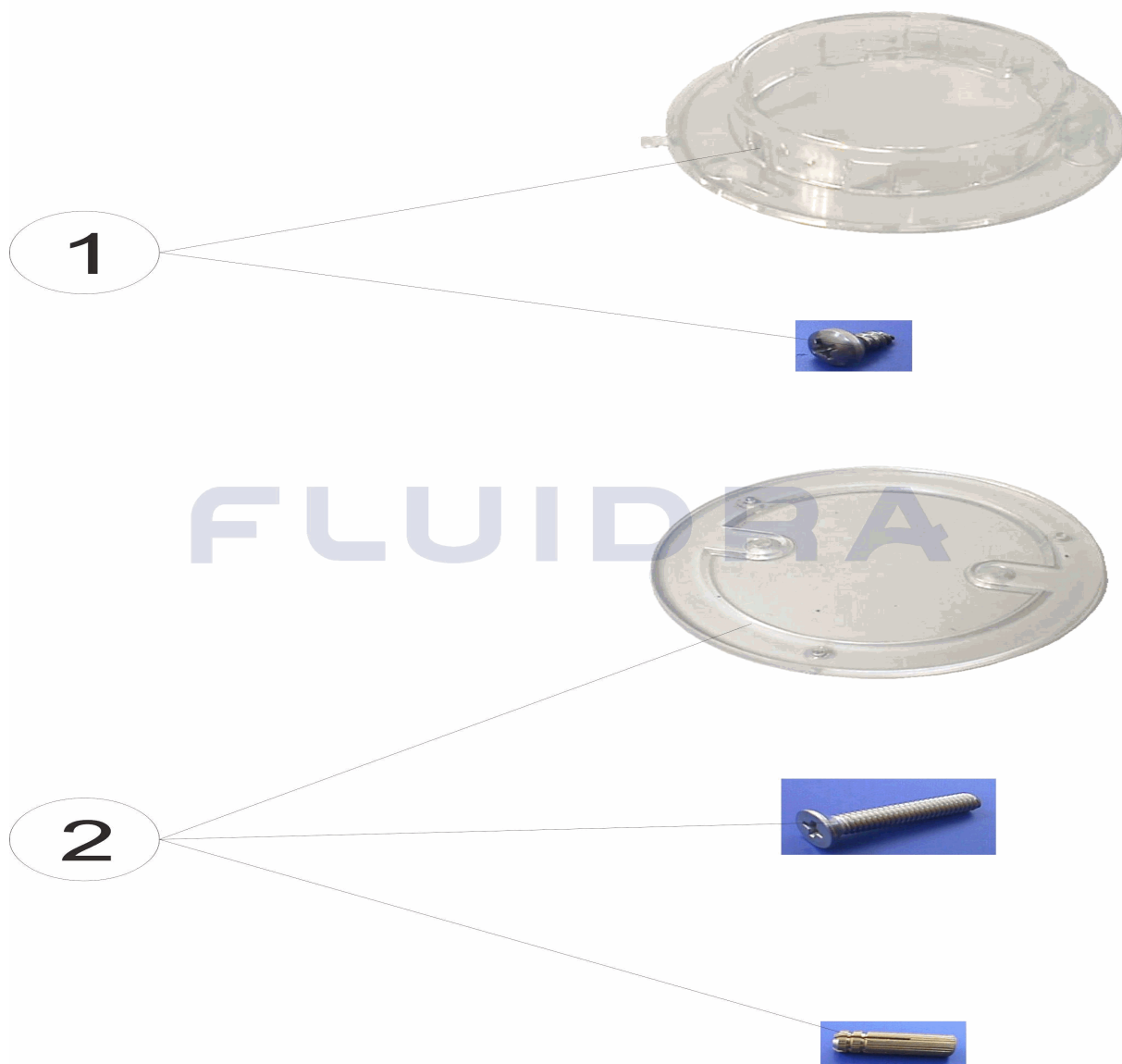


ESPAÑOL

POS	CODIGO	DESCRIPCION	CANTIDAD	POS	CODIGO	DESCRIPCION	CANTIDAD
1	4408010601	TAPA SUPERIOR PEDICLORE		2	4408010602	FIJACION PEDICLORE	

CODE **25356**

DESCRIPTION: **DISTRIBUTEUR VISSÉ LAVE-PIEDS**

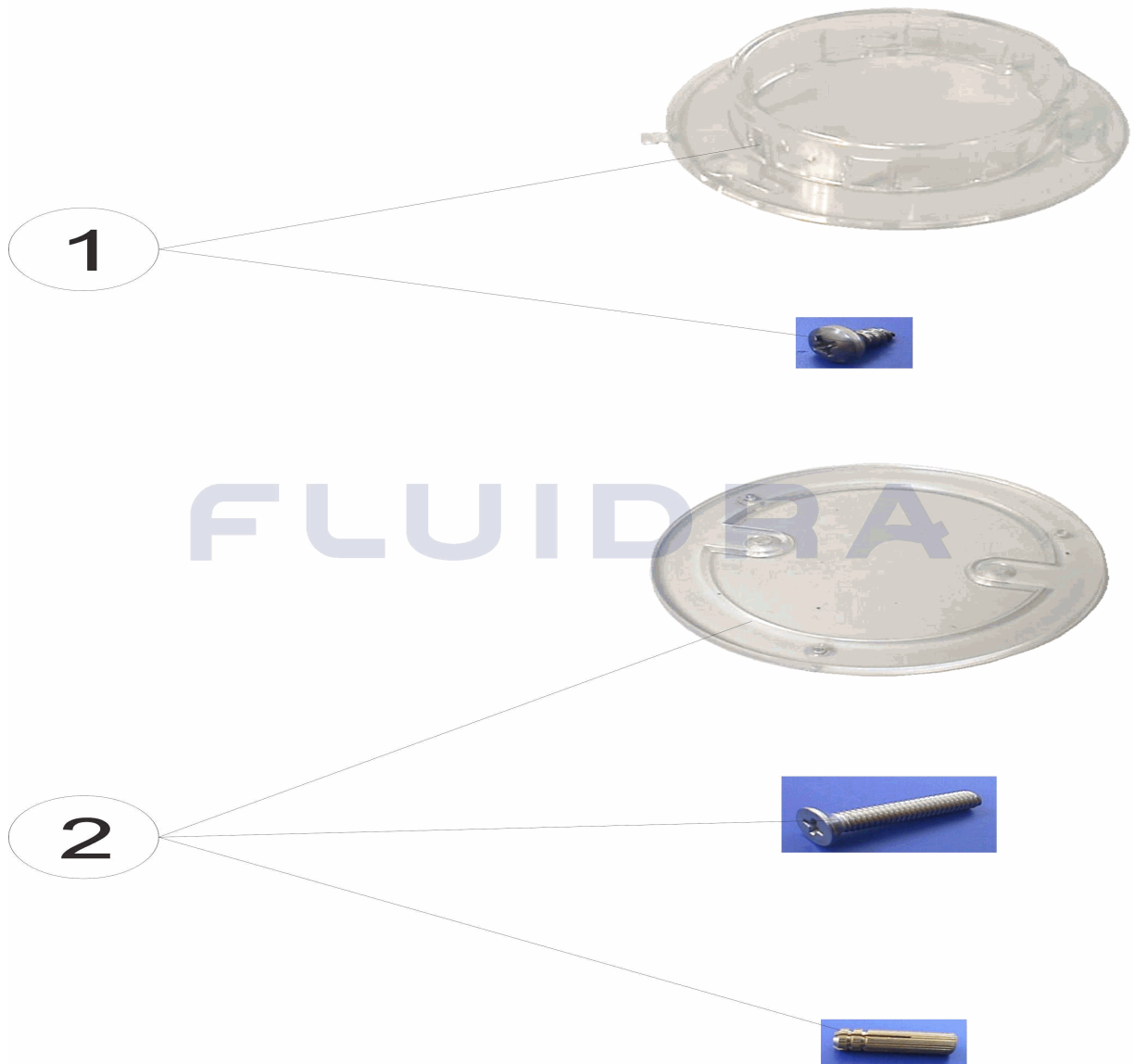


FRANCAIS

POS	CODE	DESCRIPTION	QUANTITE	POS	CODE	DESCRIPTION	QUANTITE
1	4408010601	COUVERCLE SUPERIEUR DE PEDICHLORI		2	4408010602	PEDICLORE FIXATION	

CODE **25356**

DESCRIPTION: **SCREW-IN FOOT WASH DISPENSER**

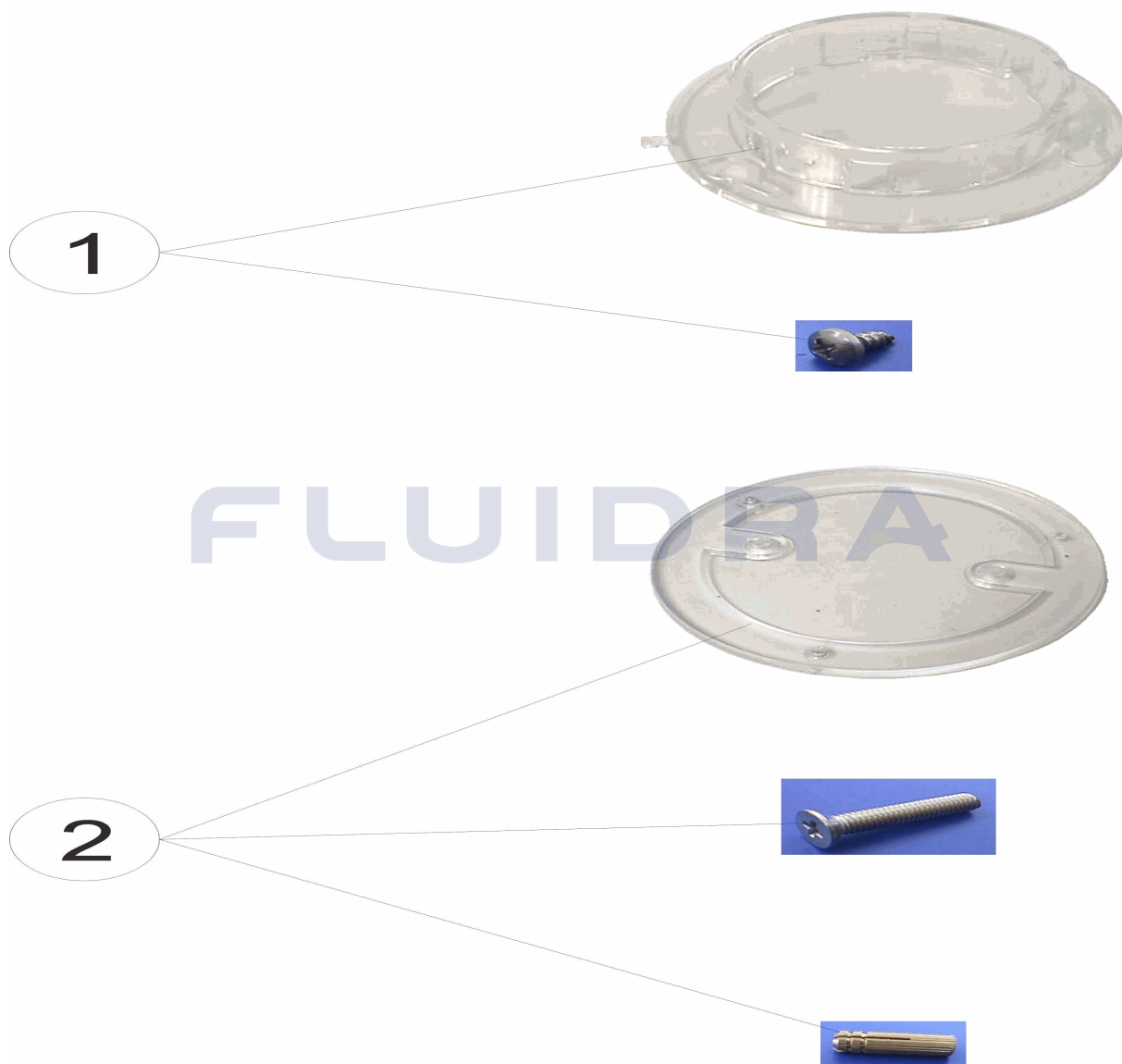


ENGLISH

POS	CODE	DESCRIPTION	QUANTITY	POS	CODE	DESCRIPTION	QUANTITY
1	4408010601	PEDICLORE LID		2	4408010602	PEDICLORE FIXINGS	

CODICE **25356**

DESCRIZIONE: **DOSIFICATORE AVVITATO LAVAPIEDI**

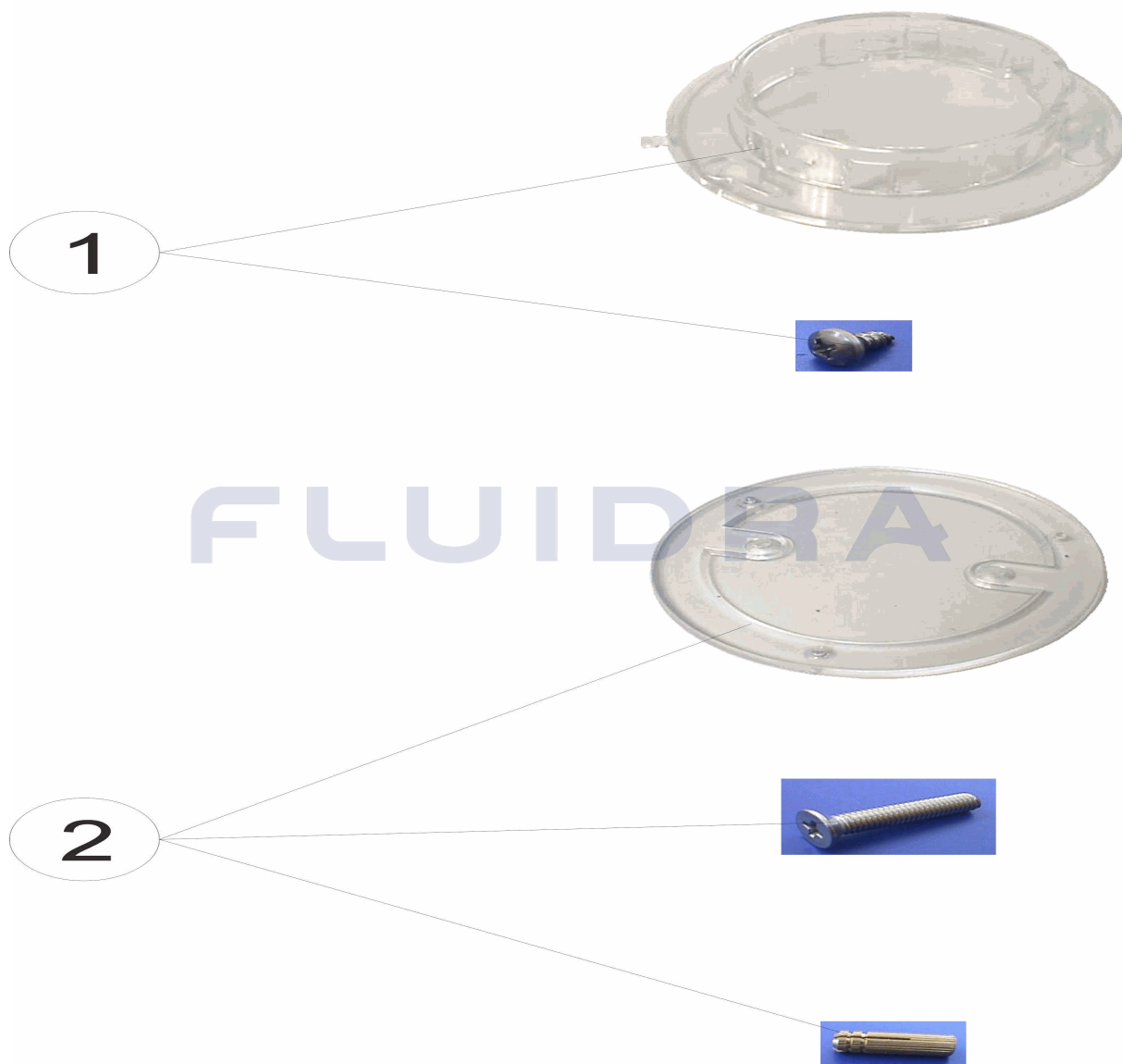


ITALIANO

POS	CODICE	DESCRIZIONE	QUANTITA'	POS	CODICE	DESCRIZIONE	QUANTITA'
1	4408010601	COPERCHIO SUPERIORE PEDICLORE		2	4408010602	FISSAGGIO PEDICLORE	

CODE **25356**

BESCHREIBUNG: DOSIERGERÄT GESCHRAUBT FUSSDUSCHE

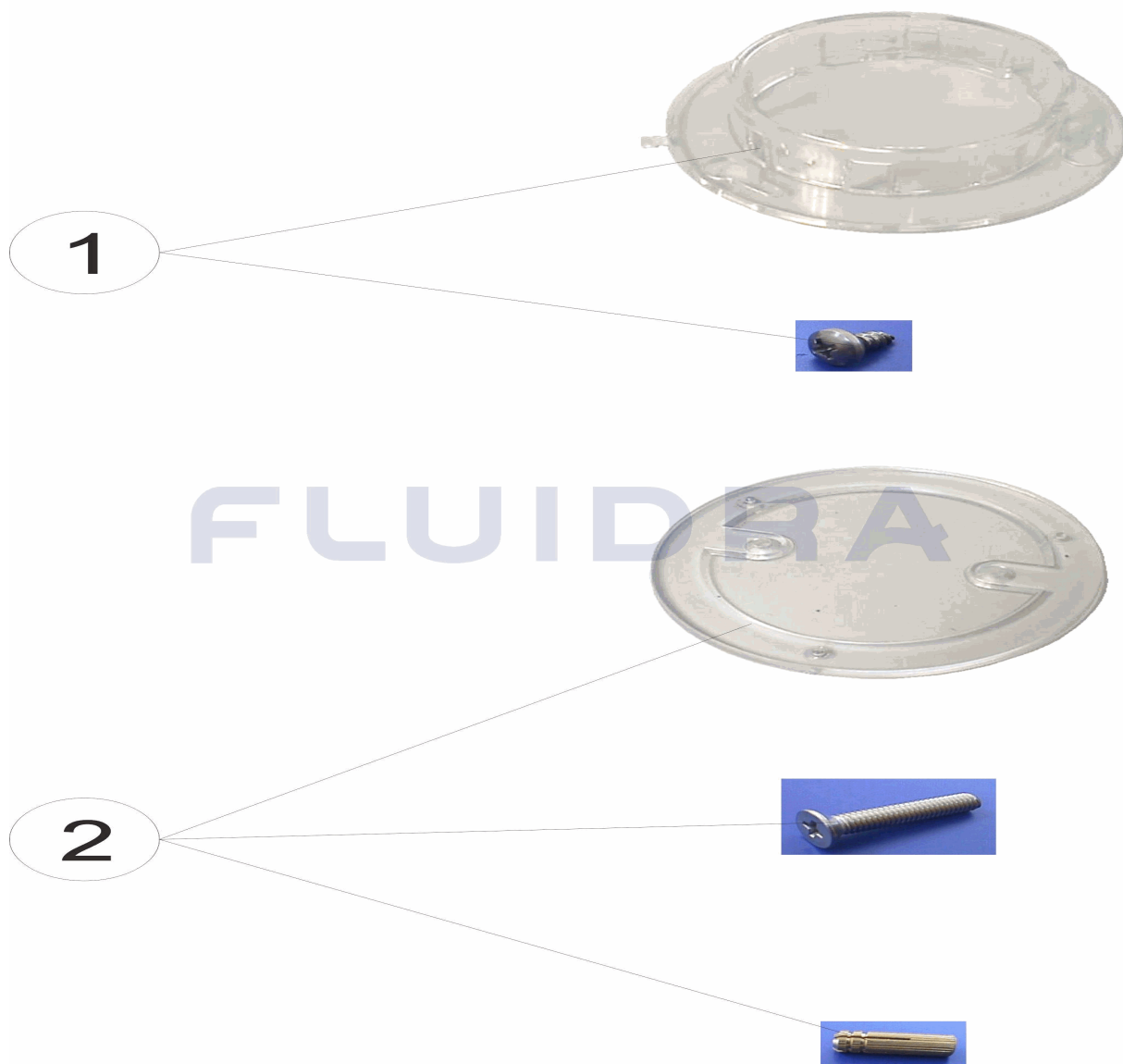


DEUTSCH

POS	CODE	BESCHREIBUNG	MENGE	POS	CODE	BESCHREIBUNG	MENGE
1	4408010601	ABDECKUNG OBEN PEDICLORE		2	4408010602	FIXIERUNG PEDICLORE	

CODIGO **25356**

DESCRIÇÃO: DOSEADOR APARAFUSADO LAVA-PÉS



PORTUGUES

POS	CODIGO	DESCRIÇÃO	JANTIDADE	POS	CODIGO	DESCRIÇÃO	JANTIDADE
1	4408010601	TAMPA SUPERIOR PEDICLORE		2	4408010602	FIXAÇÃO PEDICLORE	