

# DESPIECE

REV.: 0

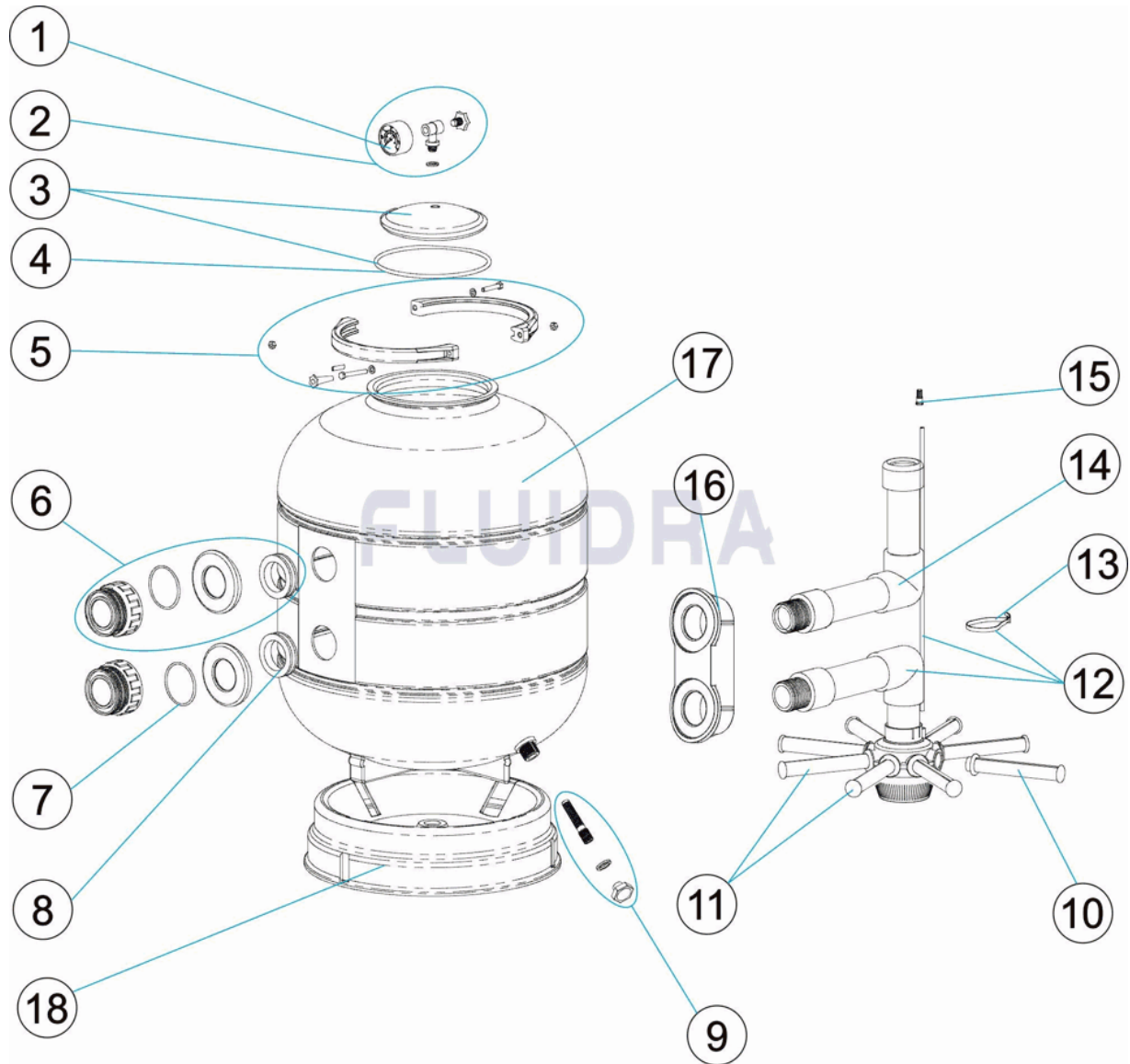
1465

FECHA: 03/06/2021

HOJA: 1/3

CODIGO FSM400, FSM450, FSM500, FSM600

DESCRIPCION: FILTRO LATERAL ZUNCHO D. 400-450-500-600



ESPAÑOL

POS	CODIGO	DESCRIPCION	CANTIDAD	POS	CODIGO	DESCRIPCION	CANTIDAD
1	4411020407	MANOMETRO 1/8" 3 KG/C "		12	* 4404010327	CJTO. COLECTOR D. 500	
2	4411020206A	MANOMETRO COMPLETO		12	* 4404010328	CJTO. COLECTOR D. 600	
3	4404080102A	TAPA TRANSPARENTE + ANILLO		13	4404300110	BRIDA	
4	4404080101A	JUNTA TORICA TAPA		14	* 4404010321	CJTO. DIFUSOR D. 400	
5	4411020402A	ZUNCHO PLASTICO		14	* 4404010322	CJTO. DIFUSOR D. 450	
6	4404220104	RACORD SALIDA + REFUERZO		14	* 4404010323	CJTO. DIFUSOR D. 500	
7	4404302302	JUNTA PLANA MIRILLA		14	* 4404010324	CJTO. DIFUSOR D. 600	
8	4404010302	JUNTA CONCAVA 1 1/2"		15	4404040108	PURGA AIRE	
9	4404250031	PURGA ARENA		16	4404220105	REFUERZO INTERIOR	
10	* 4404300119	BRAZO COLECTOR 3/4" 110 M "		17	* 33878R0300AL	CUBA D.400 ZUNCHO	
10	* 4404300120	BRAZO COLECTOR 3/4" 160 M "		17	* 33879R0300AL	CUBA D.450 ZUNCHO	
11	* 4404010073	CJTO. BRAZOS COLECTOR D. 350 - 400		17	* 33880R0300AL	CUBA D.500 ZUNCHO	
11	* 4404010074	CJTO. BRAZOS COLECTOR D. 450 - 500		17	* 33881R0300AL	CUBA D.600 ZUNCHO	

\* VER HOJA DE OBSERVACIONES

# DESPIECE

REV.: 0

1465

FECHA: 03/06/2021

HOJA: 2/3

CODIGO **FSM400, FSM450, FSM500, FSM600**DESCRIPCION: **FILTRO LATERAL ZUNCHO D. 400-450-500-600**

12	* 4404010325	CJTO. COLECTOR D. 400	18	* 33878R0001	PIE FILTRO D. 400/450
12	* 4404010326	CJTO. COLECTOR D. 450	18	* 33880R0001	PIE FILTRO D. 500/600

# DESPIECE

REV.: 0

1465

FECHA: 03/06/2021

HOJA: 3/3

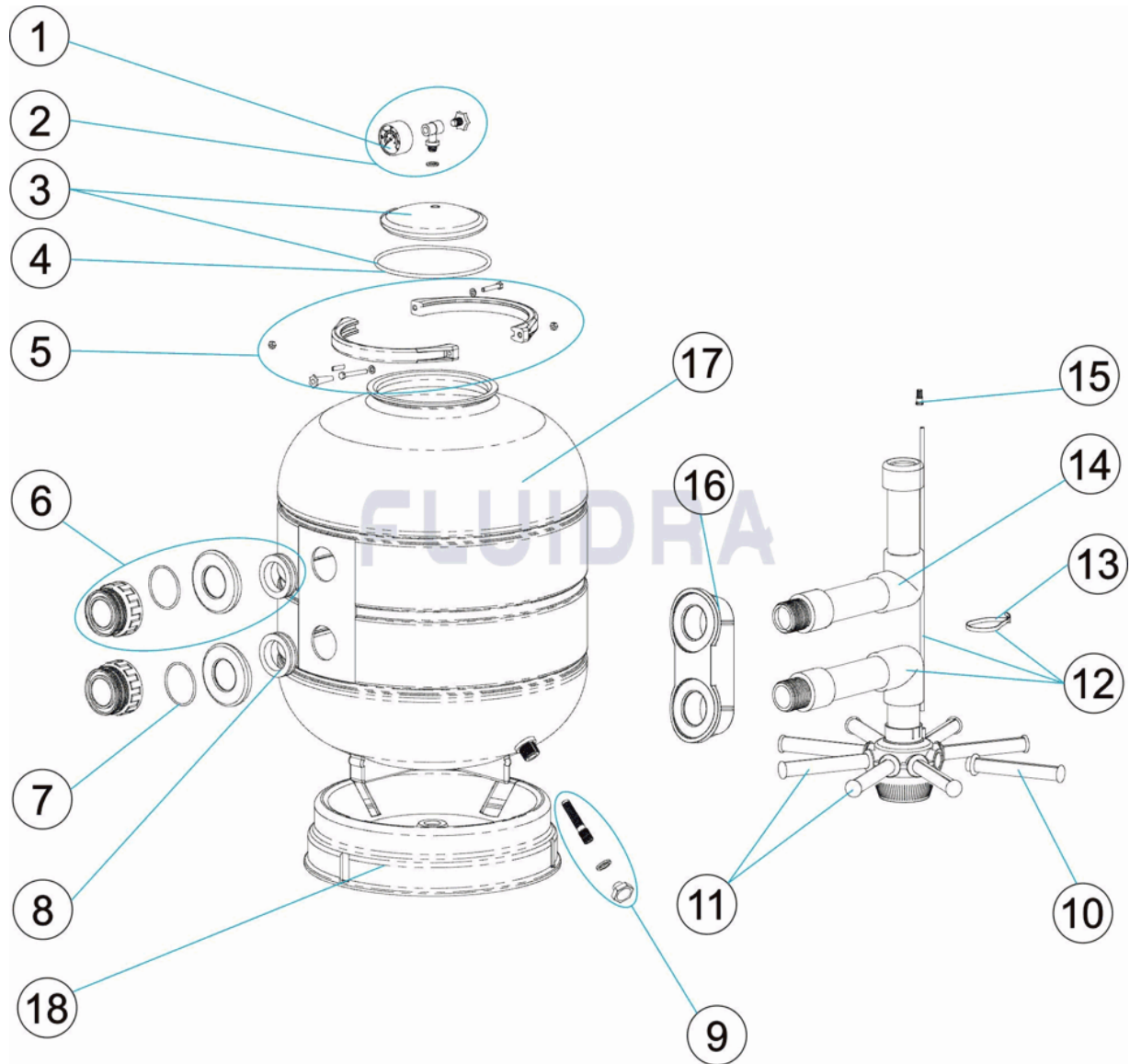
CODIGO **FSM400, FSM450, FSM500, FSM600**DESCRIPCION: **FILTRO LATERAL ZUNCHO D. 400-450-500-600**

## OBSERVACIONES

POS	CODIGO	OBSERVACIONES
10	* 4404300119	PARA: FSM400 [4UT], FSM450 [4UT]
10	* 4404300120	PARA: FSM500 [4UT], FSM600 [4UT]
11	* 4404010073	PARA: FSM400, FSM450
11	* 4404010074	PARA: FSM500, FSM600
12	* 4404010325	PARA: FSM400
12	* 4404010326	PARA: FSM450
12	* 4404010327	PARA: FSM500
12	* 4404010328	PARA: FSM600
14	* 4404010321	PARA: FSM400
14	* 4404010322	PARA: FSM450
14	* 4404010323	PARA: FSM500
14	* 4404010324	PARA: FSM600
17	* 33878R0300AL	PARA: FSM400
17	* 33879R0300AL	PARA: FSM450
17	* 33880R0300AL	PARA: FSM500
17	* 33881R0300AL	PARA: FSM600
18	* 33878R0001	PARA: FSM400, FSM450
18	* 33880R0001	PARA: FSM500, FSM600

CODE **FSM400, FSM450, FSM500, FSM600**

DESCRIPTION: **FILTRE LATÉRAL FRETTE D. 400-450-500-600**



**FRANCAIS**

POS	CODE	DESCRIPTION	QUANTITE	POS	CODE	DESCRIPTION	QUANTITE
1	4411020407	MANOMETRE 1/8" 3 KG./C "		12	* 4404010327	ENSEMBLE COLLECTEUR D. 500	
2	4411020206A	MANOMETRE COMPLET		12	* 4404010328	ENSEMBLE COLLECTEUR D. 600	
3	4404080102A	COUVERCLE TRANSPARENT + JOINT		13	4404300110	BRIDE	
4	4404080101A	JOINT TORIQUE COUVERCLE		14	* 4404010321	ENSEMBLE DIFFUSEUR D. 400	
5	4411020402A	ENSEMBLE COLLIER EN PLASTIC		14	* 4404010322	ENSEMBLE DIFFUSEUR D. 450	
6	4404220104	RACCORD SORTIE + RENFORT		14	* 4404010323	ENSEMBLE DIFFUSEUR D. 500	
7	4404302302	JOINT PLAT		14	* 4404010324	ENSEMBLE DIFFUSEUR D. 600	
8	4404010302	JOINT CONCAVE 1 1/2"		15	4404040108	PURGE D'AIR	
9	4404250031	PURGE SABLE		16	4404220105	RENFORT INTERIEUR	
10	* 4404300119	BRAS DE REPARTITEUR 3/4" 110M "		17	* 33878R0300AL	CORPS DE FILTRE D. 400	
10	* 4404300120	BRAS DE REPARTITEUR 3/4" 160M "		17	* 33879R0300AL	CORPS DE FILTRE D. 450	
11	* 4404010073	ENSEMBLE BRAS DE REPARTITEUR D. 35€		17	* 33880R0300AL	CORPS DE FILTRE D. 500	
11	* 4404010074	ENSEMBLE BRAS DE REPARTITEUR D. 45€		17	* 33881R0300AL	CORPS DE FILTRE D. 600	

# ÉCLATÉ

REV.: 0

1465

DATE: 03/06/2021

PAG.: 2/3

CODE **FSM400, FSM450, FSM500, FSM600**DESCRIPTION: **FILTRE LATÉRAL FRETTE D. 400-450-500-600**

12	* 4404010325	ENSEMBLE COLLECTEUR D. 400	18	* 33878R0001	SOCLE FILTRE D. 400/450
12	* 4404010326	ENSEMBLE COLLECTEUR D. 450	18	* 33880R0001	SOCLE FILTRE D. 500/600

# ÉCLATÉ

REV.: 0

1465

DATE: 03/06/2021

PAG.: 3/3

CODE **FSM400, FSM450, FSM500, FSM600**DESCRIPTION: **FILTRE LATÉRAL FRETTE D. 400-450-500-600**

## OBSERVATIONS

POS	CODE	OBSERVATIONS
10	* 4404300119	POUR: FSM400 [4UT], FSM450 [4UT]
10	* 4404300120	POUR: FSM500 [4UT], FSM600 [4UT]
11	* 4404010073	POUR: FSM400, FSM450
11	* 4404010074	POUR: FSM500, FSM600
12	* 4404010325	POUR: FSM400
12	* 4404010326	POUR: FSM450
12	* 4404010327	POUR: FSM500
12	* 4404010328	POUR: FSM600
14	* 4404010321	POUR: FSM400
14	* 4404010322	POUR: FSM450
14	* 4404010323	POUR: FSM500
14	* 4404010324	POUR: FSM600
17	* 33878R0300AL	POUR: FSM400
17	* 33879R0300AL	POUR: FSM450
17	* 33880R0300AL	POUR: FSM500
17	* 33881R0300AL	POUR: FSM600
18	* 33878R0001	POUR: FSM400, FSM450
18	* 33880R0001	POUR: FSM500, FSM600

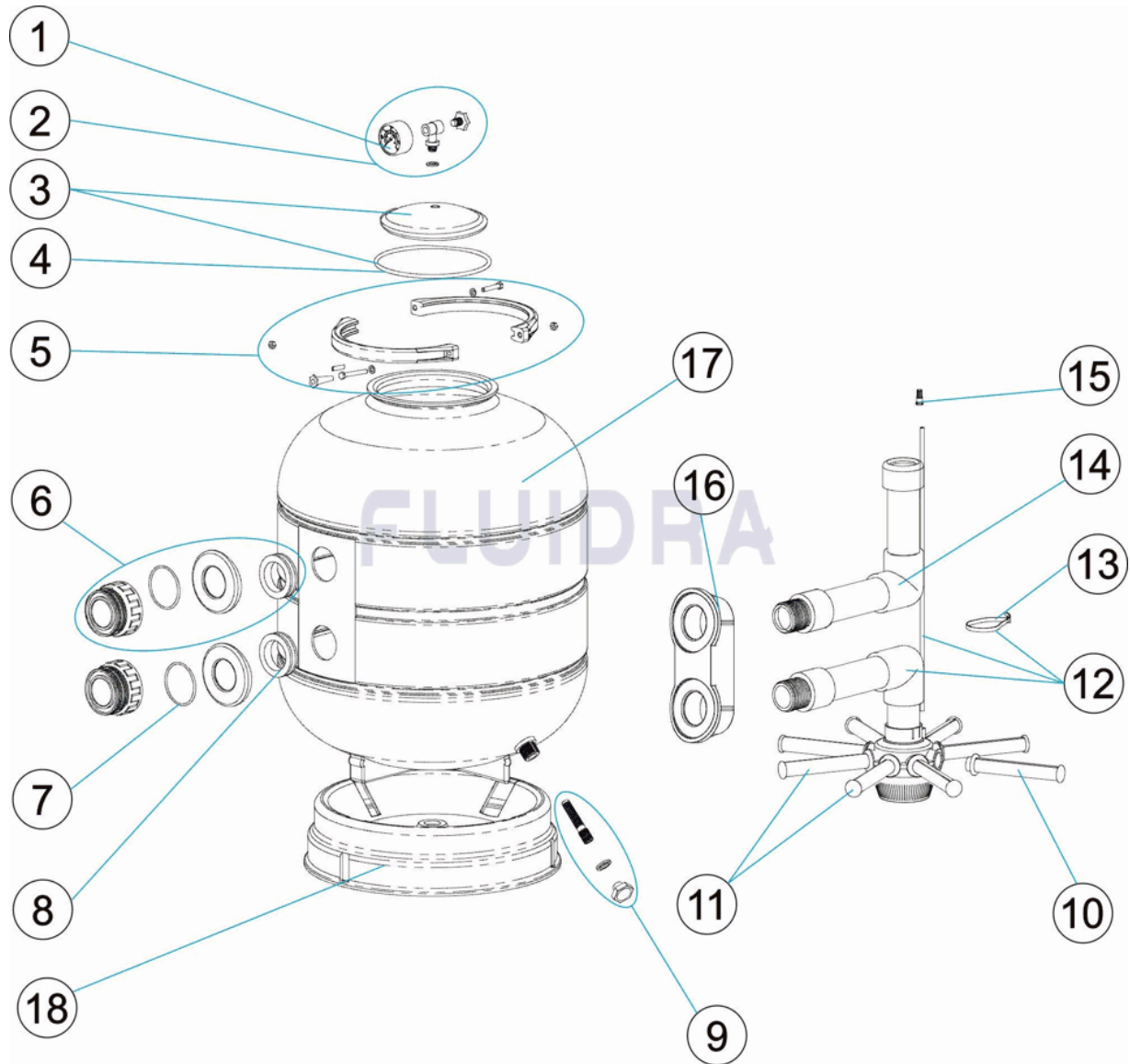
# PARTS BREAKDOWN

REV.: 0  
DATE: 03/06/2021  
SHEET: 1/3

1465

CODE FSM400, FSM450, FSM500, FSM600

DESCRIPTION: REINFORCED SIDE-MOUNTED FILTER D. 400-450-500-600



## ENGLISH

POS	CODE	DESCRIPTION	QUANTITY	POS	CODE	DESCRIPTION	QUANTITY
1	4411020407	PRESSURE GAUGE 1/8" 3 KG./C "		12	* 4404010327	MANIFOLD ASSEMBLY D. 500	
2	4411020206A	COMPLETE PRESSURE GAUGE UNIT		12	* 4404010328	MANIFOLD ASSEMBLY D. 600	
3	4404080102A	TRANSPARENT LID + GASKET		13	4404300110	FLANGE	
4	4404080101A	LID 'O' RING		14	* 4404010321	DIFFUSER ASSEMBLY D. 400	
5	4411020402A	PLASTIC V-CLAMP SET		14	* 4404010322	DIFFUSER ASSEMBLY D. 450	
6	4404220104	OUTLET FITTING + REINFORCEMENT		14	* 4404010323	DIFFUSER ASSEMBLY D. 500	
7	4404302302	FLAT GASKET		14	* 4404010324	DIFFUSER ASSEMBLY D. 600	
8	4404010302	CONCAVE GASKET 1 1/2"		15	4404040108	AIR PURGE	
9	4404250031	SAND PURGE		16	4404220105	INNER REINFORCEMENT	
10	* 4404300119	MANIFOLD ARM 3/4" 110 M "		17	* 33878R0300AL	FILTER BODY D. 400	
10	* 4404300120	MANIFOLD ARM 3/4" 160 M "		17	* 33879R0300AL	FILTER BODY D. 450	
11	* 4404010073	MANIFOLD ARM ASSEMBLY D. 350		17	* 33880R0300AL	FILTER BODY D. 500	
11	* 4404010074	MANIFOLD ARM ASSEMBLY D. 450 - 500		17	* 33881R0300AL	FILTER BODY D. 600	

\* SEE OBSERVATIONS SHEET

# PARTS BREAKDOWN

REV.: 0

1465

DATE: 03/06/2021

SHEET: 2/3

CODE **FSM400, FSM450, FSM500, FSM600**DESCRIPTION: **REINFORCED SIDE-MOUNTED FILTER D. 400-450-500-600**

12	* 4404010325	MANIFOLD ASSEMBLY D. 400	18	* 33878R0001	FILTER BASE D. 400/450
12	* 4404010326	MANIFOLD ASSEMBLY D. 450	18	* 33880R0001	FILTER BASE D. 500/600

\* SEE OBSERVATIONS SHEET



# PARTS BREAKDOWN

REV.: 0  
DATE: 03/06/2021  
SHEET: 3/3

1465

CODE **FSM400, FSM450, FSM500, FSM600**

DESCRIPTION: **REINFORCED SIDE-MOUNTED FILTER D. 400-450-500-600**

## OBSERVATIONS

POS	CODE	OBSERVATIONS
10	* 4404300119	FOR: FSM400 [4UT], FSM450 [4UT]
10	* 4404300120	FOR: FSM500 [4UT], FSM600 [4UT]
11	* 4404010073	FOR: FSM400, FSM450
11	* 4404010074	FOR: FSM500, FSM600
12	* 4404010325	FOR: FSM400
12	* 4404010326	FOR: FSM450
12	* 4404010327	FOR: FSM500
12	* 4404010328	FOR: FSM600
14	* 4404010321	FOR: FSM400
14	* 4404010322	FOR: FSM450
14	* 4404010323	FOR: FSM500
14	* 4404010324	FOR: FSM600
17	* 33878R0300AL	FOR: FSM400
17	* 33879R0300AL	FOR: FSM450
17	* 33880R0300AL	FOR: FSM500
17	* 33881R0300AL	FOR: FSM600
18	* 33878R0001	FOR: FSM400, FSM450
18	* 33880R0001	FOR: FSM500, FSM600

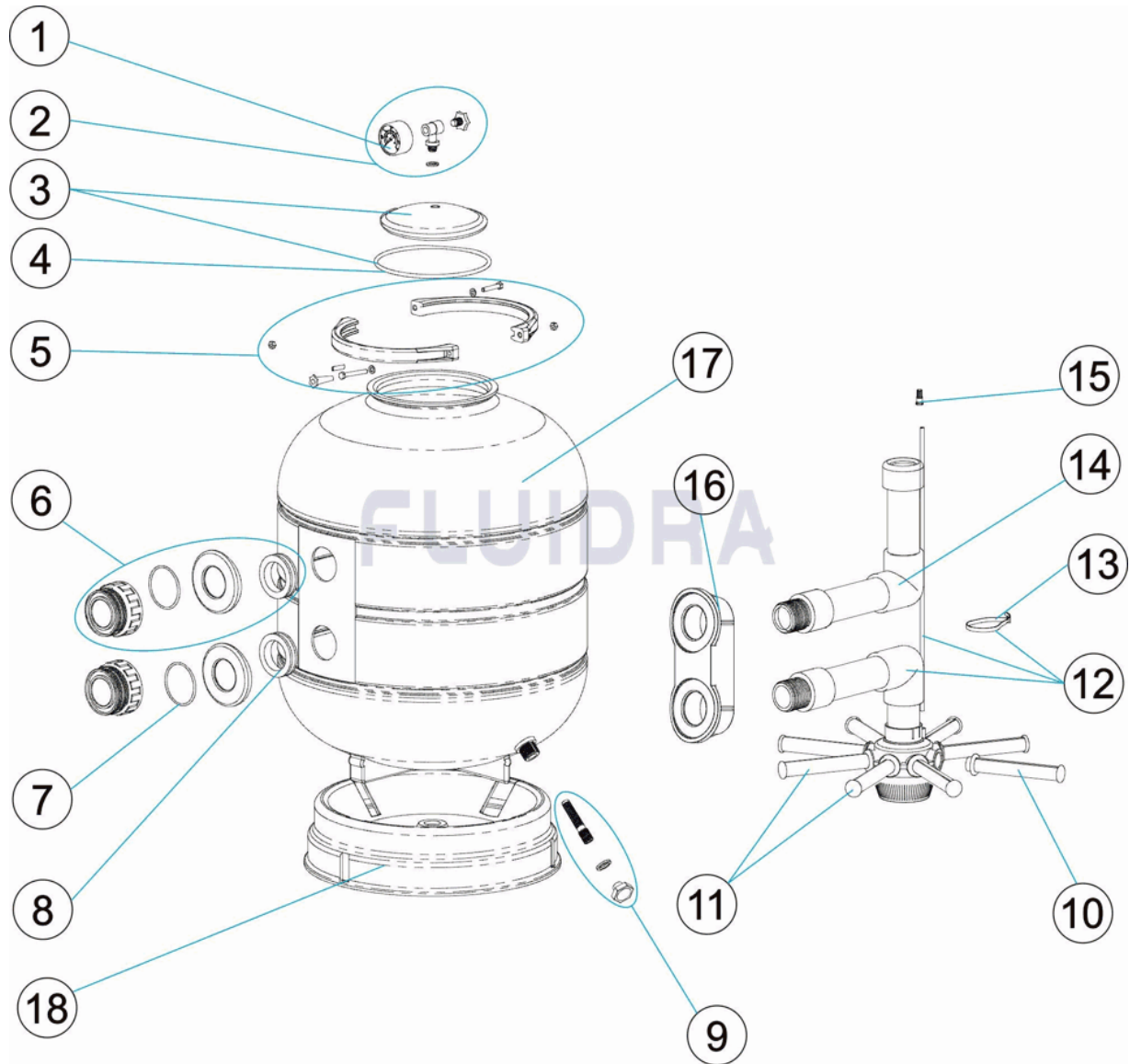
# ESPLOSO

REV.: 0  
DATA: 03/06/2021  
PAG.: 1/3

1465

CODICE **FSM400, FSM450, FSM500, FSM600**

DESCRIZIONE: **FILTRO STAFFA LATERALE D. 400-450-500-600**



## ITALIANO

POS	CODICE	DESCRIZIONE	QUANTITA'	POS	CODICE	DESCRIZIONE	QUANTITA'
1	4411020407	MANOMETRO 1/8" 3 KG./C "		12	* 4404010327	KIT COLLETTORE D. 500	
2	4411020206A	MANOMETRO COMPLETO		12	* 4404010328	KIT COLLETTORE D. 600	
3	4404080102A	COPERCHIO TRASPARENTE + ANELLO		13	4404300110	FLANGIA	
4	4404080101A	O-RING COPERCHIO		14	* 4404010321	RACCORDO DIFFUSORE D. 400	
5	4411020402A	INSIEME FASCIA IN PLASTICA		14	* 4404010322	RACCORDO DIFFUSORE D. 450	
6	4404220104	RACCORDO USCITA + RINFORZO		14	* 4404010323	RACCORDO DIFFUSORE D. 500	
7	4404302302	GUARNIZIONE PIANA		14	* 4404010324	RACCORDO DIFFUSORE D. 600	
8	4404010302	GUARNIZIONI CONCAVA 1 1/2"		15	4404040108	SFIATO ARIA	
9	4404250031	SCARICO SABBIA		16	4404220105	RINFORZO INTERNO	
10	* 4404300119	CANDELOTTO COLLETTORE 3/4" 110M "		17	* 33878R0300AL	CORPO FILTRO D. 400	
10	* 4404300120	CANDELOTTO COLLETTORE 3/4" 160M "		17	* 33879R0300AL	CORPO FILTRO D. 450	
11	* 4404010073	GRUPPO CANDELOTTO COLLETTORE D. 3		17	* 33880R0300AL	CORPO FILTRO D. 500	
11	* 4404010074	GRUPPO CANDELOTTO COLLETTORE D. 4		17	* 33881R0300AL	CORPO FILTRO D. 600	

\* SI FACCIA RIFERIMENTO AL FOGLIO DELLE OSSERVAZIONI

# ESPLOSO

REV.: 0

1465

DATA: 03/06/2021

PAG.: 2/3

CODICE **FSM400, FSM450, FSM500, FSM600**DESCRIZIONE: **FILTRO STAFFA LATERALE D. 400-450-500-600**

12	* 4404010325	KIT COLLETTORE D. 400	18	* 33878R0001	BASE FILTRO 400/450
12	* 4404010326	KIT COLLETTORE D. 450	18	* 33880R0001	BASE FILTRO D. 500/600

# ESPLOSO

REV.: 0

1465

DATA: 03/06/2021

PAG.: 3/3

CODICE **FSM400, FSM450, FSM500, FSM600**DESCRIZIONE: **FILTRO STAFFA LATERALE D. 400-450-500-600**

## OSSERVAZIONI

POS	CODICE	OSSERVAZIONI
10	* 4404300119	PER: FSM400 [4UT], FSM450 [4UT]
10	* 4404300120	PER: FSM500 [4UT], FSM600 [4UT]
11	* 4404010073	PER: FSM400, FSM450
11	* 4404010074	PER: FSM500, FSM600
12	* 4404010325	PER: FSM400
12	* 4404010326	PER: FSM450
12	* 4404010327	PER: FSM500
12	* 4404010328	PER: FSM600
14	* 4404010321	PER: FSM400
14	* 4404010322	PER: FSM450
14	* 4404010323	PER: FSM500
14	* 4404010324	PER: FSM600
17	* 33878R0300AL	PER: FSM400
17	* 33879R0300AL	PER: FSM450
17	* 33880R0300AL	PER: FSM500
17	* 33881R0300AL	PER: FSM600
18	* 33878R0001	PER: FSM400, FSM450
18	* 33880R0001	PER: FSM500, FSM600

# EINZELTEILE

ÜBER.: 0

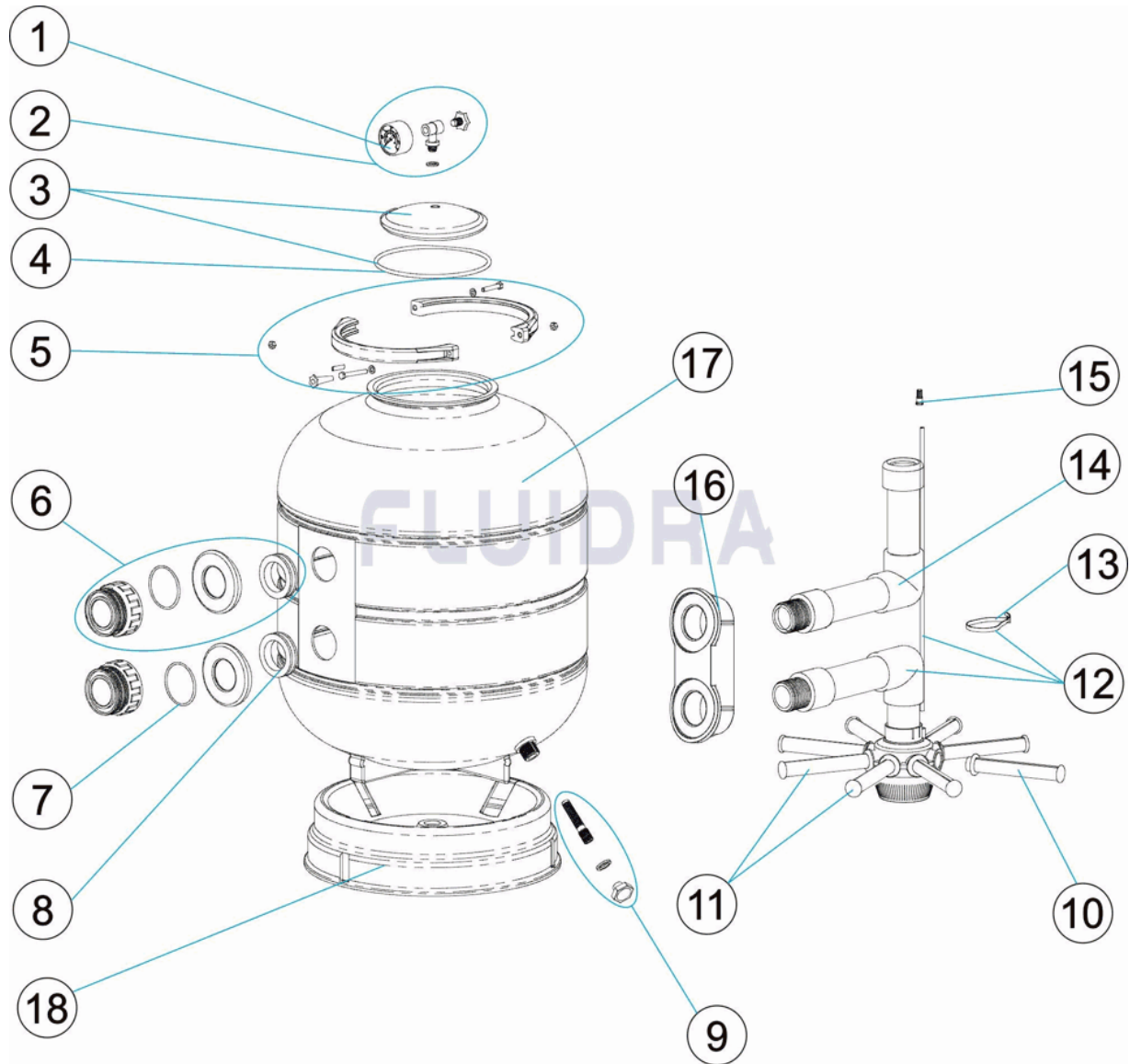
1465

DATUM: 03/06/2021

BLATT: 1/3

CODE **FSM400, FSM450, FSM500, FSM600**

BESCHREIBUNG: **FILTER SEITLICH EINSATZ D. 400-450-500-600**



**DEUTSCH**

POS	CODE	BESCHREIBUNG	MENGE	POS	CODE	BESCHREIBUNG	MENGE
1	4411020407	MANOMETER 1/8" 3 KG/C "		12	* 4404010327	SAMMELROHRSET D. 500	
2	4411020206A	MANOMETER KOMPLETT		12	* 4404010328	SAMMELROHRSET D. 600	
3	4404080102A	ABDECKUNG TRANSPARENT MIT RING		13	4404300110	FLANSCH	
4	4404080101A	O-RING ABDECKUNG		14	* 4404010321	SET WASSERVERTEILER D. 400	
5	4411020402A	EINSATZ KUNSTSTOFF		14	* 4404010322	SET WASSERVERTEILER D. 450	
6	4404220104	GEWINDESTÜCK AUSGANG MIT VERSTÄR		14	* 4404010323	SET WASSERVERTEILER D. 500	
7	4404302302	FLACHDICHTUNG SCHAUGLAS		14	* 4404010324	SET WASSERVERTEILER D. 600	
8	4404010302	DICHTUNG KONKAV 1 1/2"		15	4404040108	ENTLÜFTUNG	
9	4404250031	SANDENTLEERUNG		16	4404220105	INNENVERSTÄRKUNG	
10	* 4404300119	FILTERSTERN-SCHLITZROHR 3/4" 110M "		17	* 33878R0300AL	GEHÄUSE D. 400 EINSATZ	
10	* 4404300120	FILTERSTERN-SCHLITZROHR 3/4" 160 M "		17	* 33879R0300AL	GEHÄUSE D. 450 EINSATZ	
11	* 4404010073	SET FILTERSTERN-SCHLITZROHR D. 350 -		17	* 33880R0300AL	GEHÄUSE D. 500 EINSATZ	
11	* 4404010074	SET FILTERSTERN-SCHLITZROHR D. 450 -		17	* 33881R0300AL	GEHÄUSE D. 600 EINSATZ	

\* SIEHE ANMERKUNGSBLATT

# EINZELTEILE

ÜBER.: 0

1465

DATUM: 03/06/2021

BLATT: 2/3

CODE **FSM400, FSM450, FSM500, FSM600**BESCHREIBUNG: **FILTER SEITLICH EINSATZ D. 400-450-500-600**

12	* 4404010325	SAMMELROHRSET D. 400	18	* 33878R0001	FILTERFUSS 400/450
12	* 4404010326	SAMMELROHRSET D. 450	18	* 33880R0001	FILTERFUSS D. 500/600

\* SIEHE ANMERKUNGSBLATT

# EINZELTEILE

ÜBER.: 0

1465

DATUM: 03/06/2021

BLATT: 3/3

CODE **FSM400, FSM450, FSM500, FSM600**BESCHREIBUNG: **FILTER SEITLICH EINSATZ D. 400-450-500-600**

## HINWEISE

POS	CODE	HINWEISE
10	* 4404300119	FÜR: FSM400 [4UT], FSM450 [4UT]
10	* 4404300120	FÜR: FSM500 [4UT], FSM600 [4UT]
11	* 4404010073	FÜR: FSM400, FSM450
11	* 4404010074	FÜR: FSM500, FSM600
12	* 4404010325	FÜR: FSM400
12	* 4404010326	FÜR: FSM450
12	* 4404010327	FÜR: FSM500
12	* 4404010328	FÜR: FSM600
14	* 4404010321	FÜR: FSM400
14	* 4404010322	FÜR: FSM450
14	* 4404010323	FÜR: FSM500
14	* 4404010324	FÜR: FSM600
17	* 33878R0300AL	FÜR: FSM400
17	* 33879R0300AL	FÜR: FSM450
17	* 33880R0300AL	FÜR: FSM500
17	* 33881R0300AL	FÜR: FSM600
18	* 33878R0001	FÜR: FSM400, FSM450
18	* 33880R0001	FÜR: FSM500, FSM600

# ITEM

REV.: 0

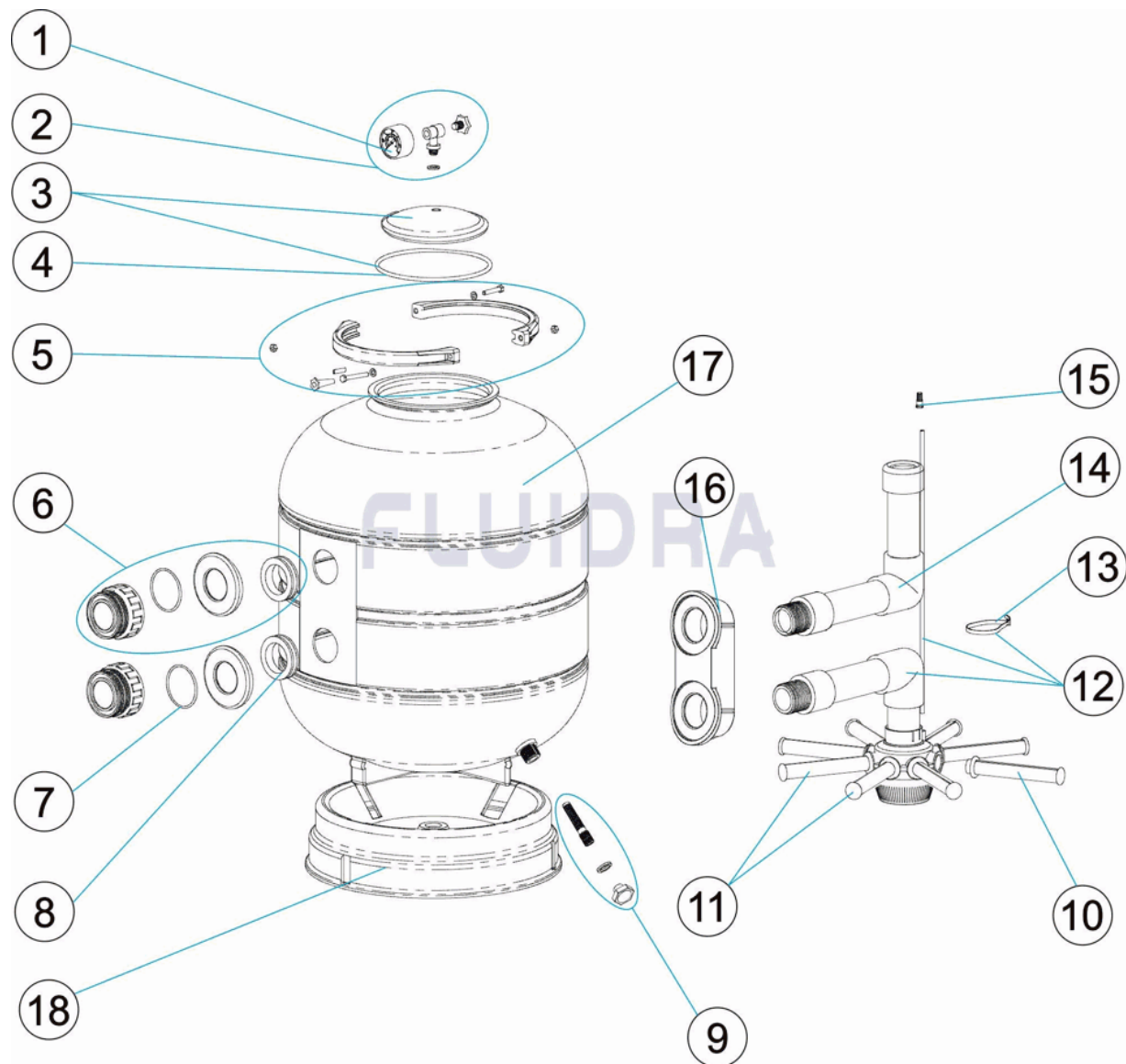
1465

DATA: 03/06/2021

FOLHA: 1/3

CODIGO **FSM400, FSM450, FSM500, FSM600**

DESCRIÇÃO: **FILTRO LATERAL BRAÇADEIRA D. 400-450-500-600**



## PORTUGUES

POS	CODIGO	DESCRIÇÃO	JANTIDADE	POS	CODIGO	DESCRIÇÃO	JANTIDADE
1	4411020407	MANOMETRO 1/8" 3 KG./C "		12	* 4404010327	CJTO. COLECTOR D. 500	
2	4411020206A	MANÓMETRO COMPLETO		12	* 4404010328	CJTO. COLECTOR D. 600	
3	4404080102A	TAMPA TRANSPARENTE + ARO		13	4404300110	FLANGE	
4	4404080101A	JUNTA TÓRICA TAMPA		14	* 4404010321	CJTO. DIFUSOR D. 400	
5	4411020402A	CONJUNTO ABRAÇADERA DE PLASTICO		14	* 4404010322	CJTO. DIFUSOR D. 450	
6	4404220104	ACOPLADOR SAÍDA + REFORÇO		14	* 4404010323	CJTO. DIFUSOR D. 500	
7	4404302302	JUNTA PLANA		14	* 4404010324	CJTO. DIFUSOR D. 600	
8	4404010302	JUNTA CÔNCAVA 1 1/2"		15	4404040108	PURGA AREIA	
9	4404250031	PURGA AREIA		16	4404220105	REFORÇO INTERIOR	
10	* 4404300119	BRAÇO COLECTOR 3/4" 110M "		17	* 33878R0300AL	CORPO FILTRO D. 400	
10	* 4404300120	BRAÇO COLECTOR 3/4" 160M "		17	* 33879R0300AL	CORPO FILTRO D. 450	
11	* 4404010073	CJTO. BRAÇO COLECTOR D. 350		17	* 33880R0300AL	CORPO FILTRO D. 500	
11	* 4404010074	CJTO. BRAÇO COLECTOR D. 450 - 500		17	* 33881R0300AL	CORPO FILTRO D. 600	

\* VEJA A FICHA DE OBSERVAÇÕES



# ITEM

REV.: 0

1465

DATA: 03/06/2021

FOLHA: 2/3

CODIGO **FSM400, FSM450, FSM500, FSM600**DESCRICAÇÃO: **FILTRO LATERAL BRAÇADEIRA D. 400-450-500-600**

12	* 4404010325	CJTO. COLECTOR D. 400	18	* 33878R0001	PÉ FILTRO 400/450
12	* 4404010326	CJTO. COLECTOR D. 450	18	* 33880R0001	PÉ FILTRO D. 500/600

\* VEJA A FICHA DE OBSERVAÇÕES

# ITEM

REV.: 0

1465

DATA: 03/06/2021

FOLHA: 3/3

CODIGO **FSM400, FSM450, FSM500, FSM600**DESCRICAÇÃO: **FILTRO LATERAL BRAÇADEIRA D. 400-450-500-600**

## OBSERVACÕES

POS	CODIGO	OBSERVACÕES
10	* 4404300119	PARA: FSM400 [4UT], FSM450 [4UT]
10	* 4404300120	PARA: FSM500 [4UT], FSM600 [4UT]
11	* 4404010073	PARA: FSM400, FSM450
11	* 4404010074	PARA: FSM500, FSM600
12	* 4404010325	PARA: FSM400
12	* 4404010326	PARA: FSM450
12	* 4404010327	PARA: FSM500
12	* 4404010328	PARA: FSM600
14	* 4404010321	PARA: FSM400
14	* 4404010322	PARA: FSM450
14	* 4404010323	PARA: FSM500
14	* 4404010324	PARA: FSM600
17	* 33878R0300AL	PARA: FSM400
17	* 33879R0300AL	PARA: FSM450
17	* 33880R0300AL	PARA: FSM500
17	* 33881R0300AL	PARA: FSM600
18	* 33878R0001	PARA: FSM400, FSM450
18	* 33880R0001	PARA: FSM500, FSM600