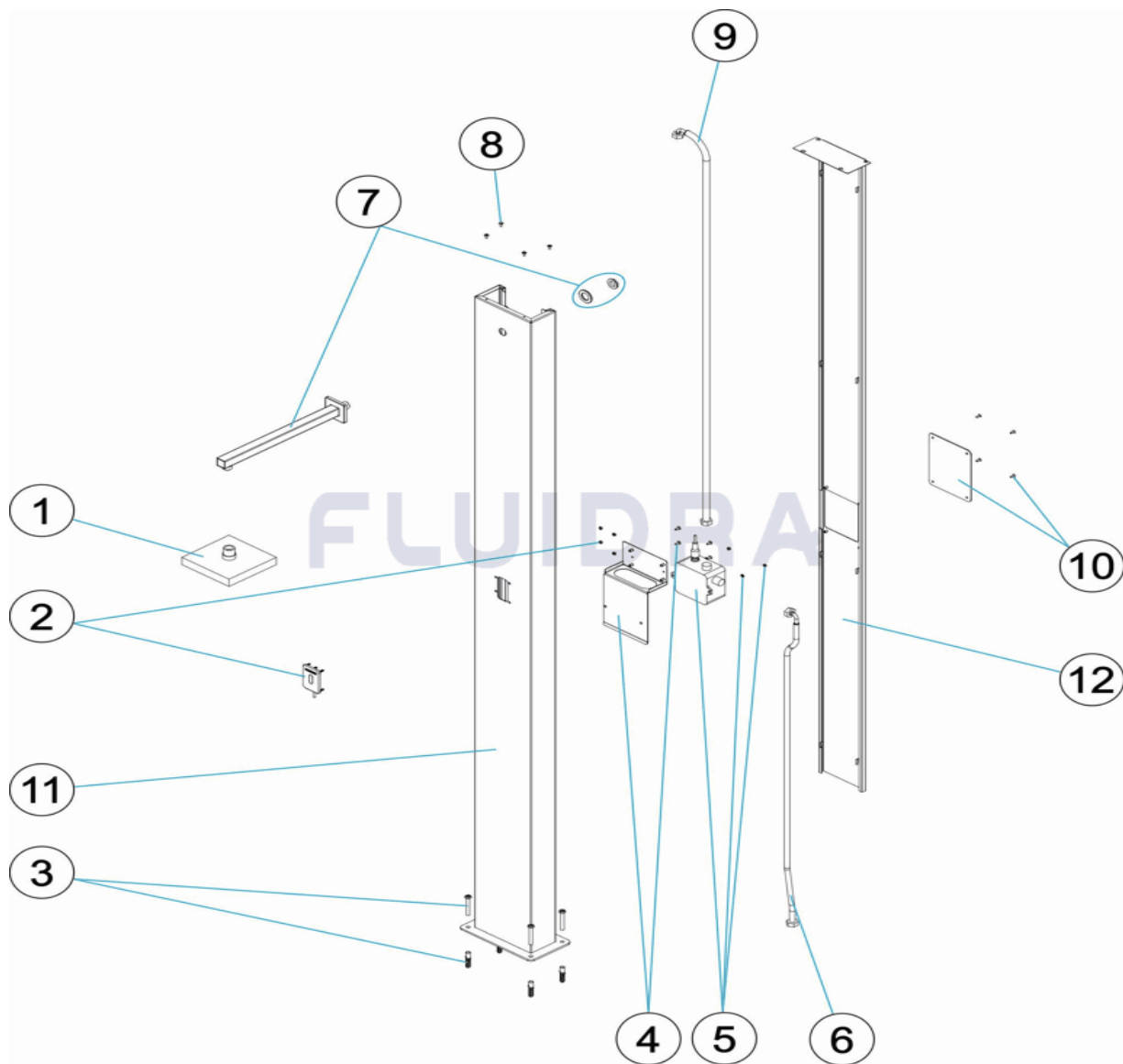


CODIGO **74102**

DESCRIPCION: **DUCHA NIAGARA TOUCHLESS**

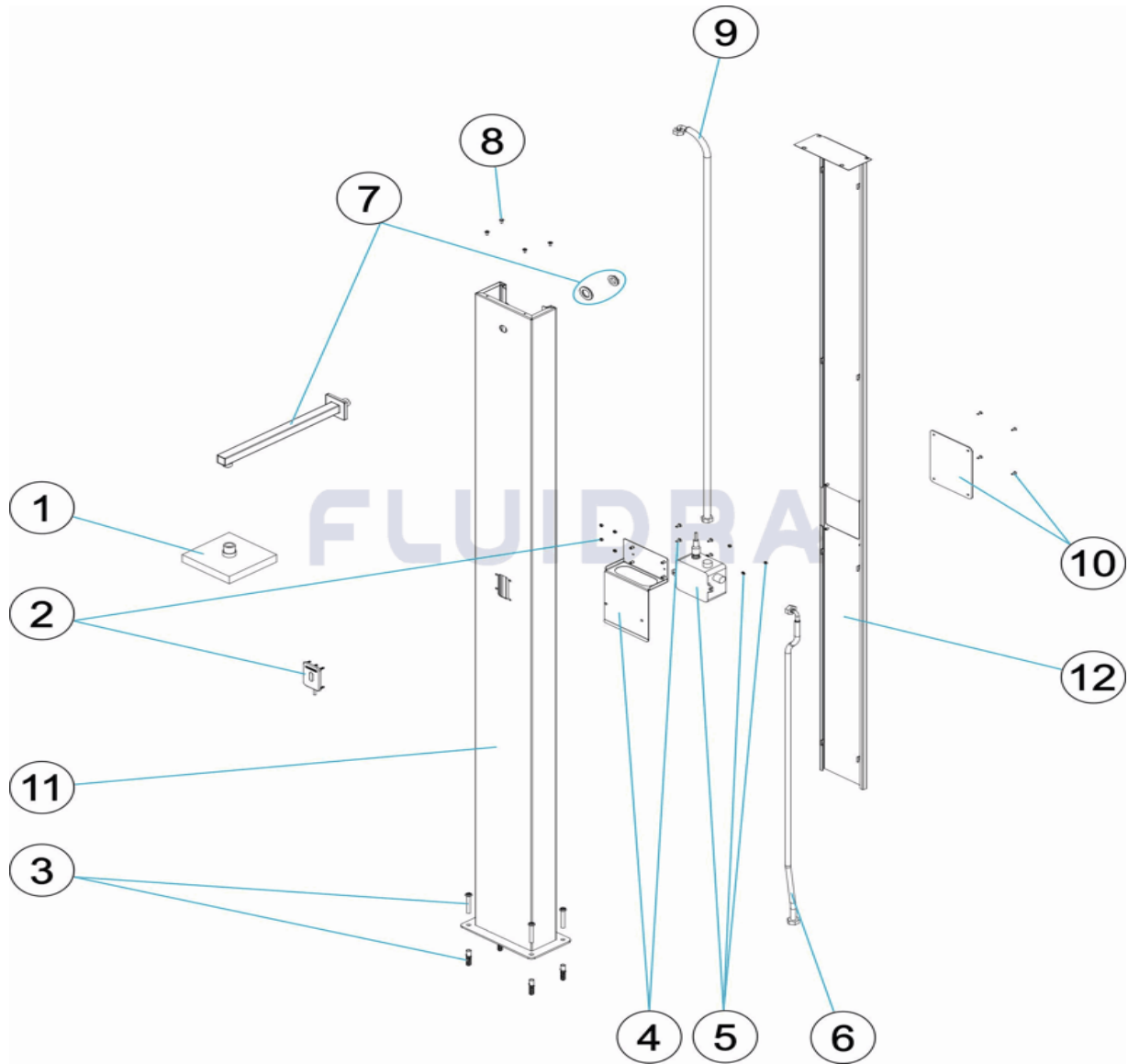


**ESPAÑOL**

POS	CODIGO	DESCRIPCION	CANTIDAD	POS	CODIGO	DESCRIPCION	CANTIDAD
1	4401040052	ROCIADOR		7	4401040053	BRAZO DUCHA	
2	4401040293	EMBELLECEDOR SENSOR		8	4401040296	TORNILLERIA FIJACION	
3	4401040056	CJTO. TACO FIJACION		9	4401040217	LATIGUILLO CODO 1/2" H. - 1/2" H. L=1300 l	
4	4401040294	SOPORTE SENSOR		10	4401040297	TAPA TRASERA	
5	4401040295	SENSOR DE PROXIMIDAD		11	74102R0100	CUERPO DUCHA	
6	4401040054	FLEXO SUPERIOR		12	74102R0400	TAPA POSTERIOR	

CODE 74102

DESCRIPTION: DOUCHE NIAGARA TOUCHLESS

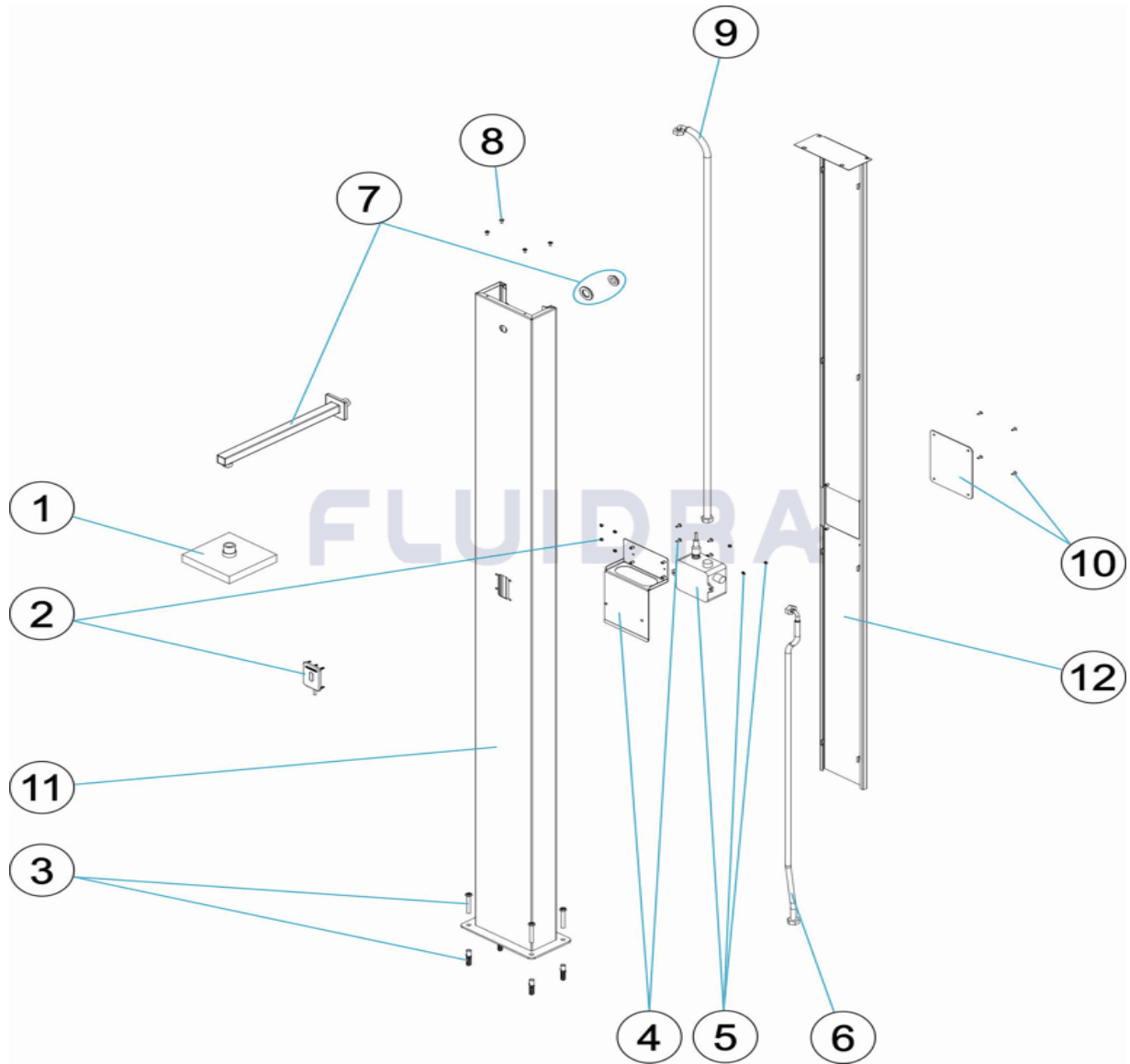


FRANCAIS

POS	CODE	DESCRIPTION	QUANTITE	POS	CODE	DESCRIPTION	QUANTITE
1	4401040052	POMME DE DOUCHE		7	4401040053	BRAS DE DOUCHE	
2	4401040293	ENJOLIVEUR CAPTEUR		8	4401040296	VIS DE FIXATION	
3	4401040056	ENSEMBLE FIXATION		9	4401040217	TUYAU CODO 1/2" H. - 1/2" H. L=1300 M/M'	
4	4401040294	SUPPORT CAPTEUR		10	4401040297	COUVERCLE ARRIERE	
5	4401040295	CAPTEUR DE PROXIMITE		11	74102R0100	CORPS DE DOUCHE	
6	4401040054	FLEXIBLE		12	74102R0400	COUVERCLE ARRIERE	

CODE **74102**

DESCRIPTION: **TOUCHLESS NIAGARA SHOWER**

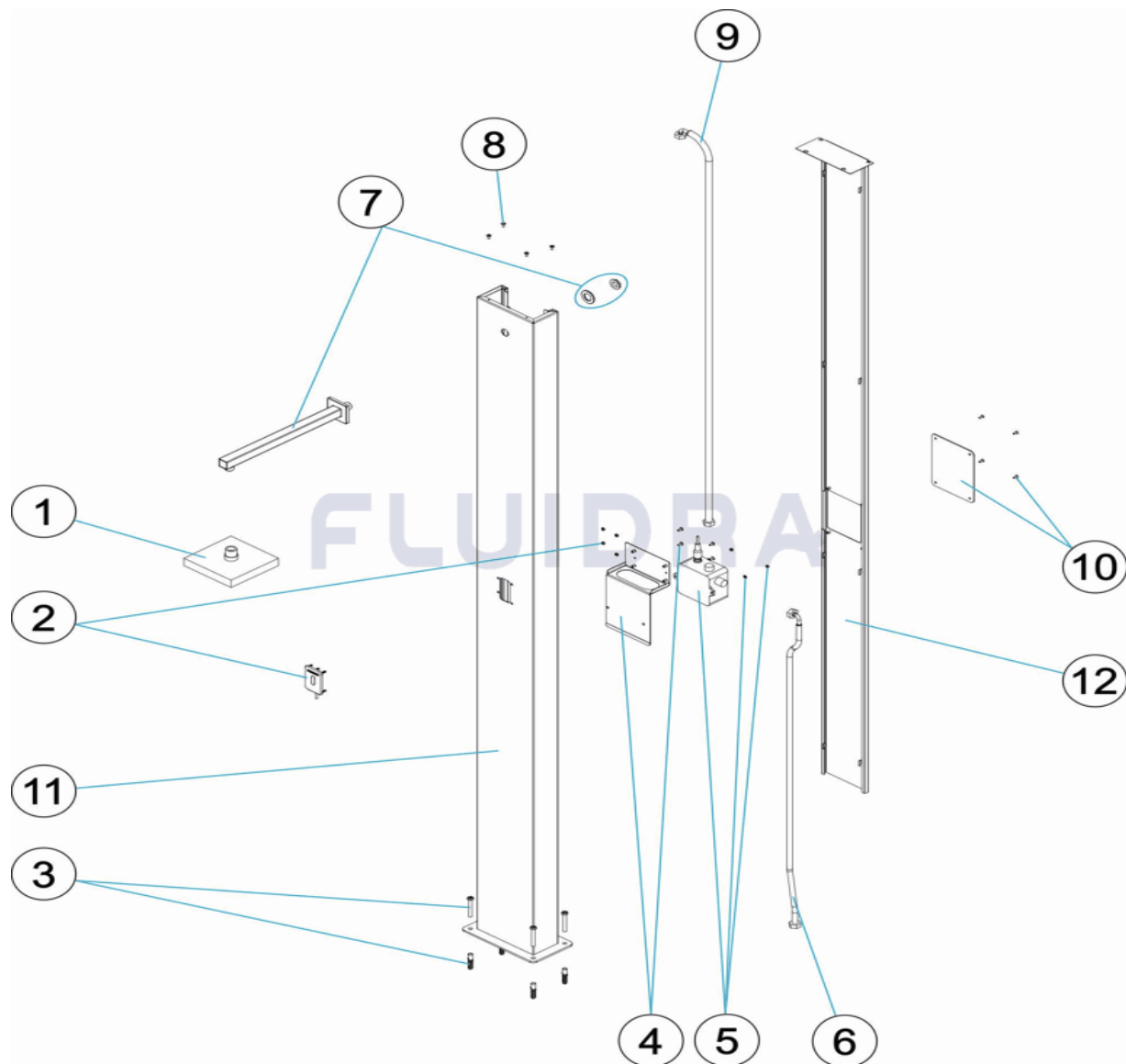


**ENGLISH**

POS	CODE	DESCRIPTION	QUANTITY	POS	CODE	DESCRIPTION	QUANTITY
1	4401040052	SPRINKLER		7	4401040053	SHOWER ARM	
2	4401040293	SENSOR COVER		8	4401040296	BOLT SET	
3	4401040056	BRAIDED HOSE		9	4401040217	CODO 1/2" H. - 1/2" H. L=1300 M/M. FLEXIB	
4	4401040294	SENSOR SUPPORT		10	4401040297	REAR COVER	
5	4401040295	PROXIMITY SENSOR		11	74102R0100	SHOWER BODY	
6	4401040054	BRAIDED HOSE		12	74102R0400	BACK COVER	

CODICE **74102**

DESCRIZIONE: **DOCCIA NIAGARA TOUCHLESS**

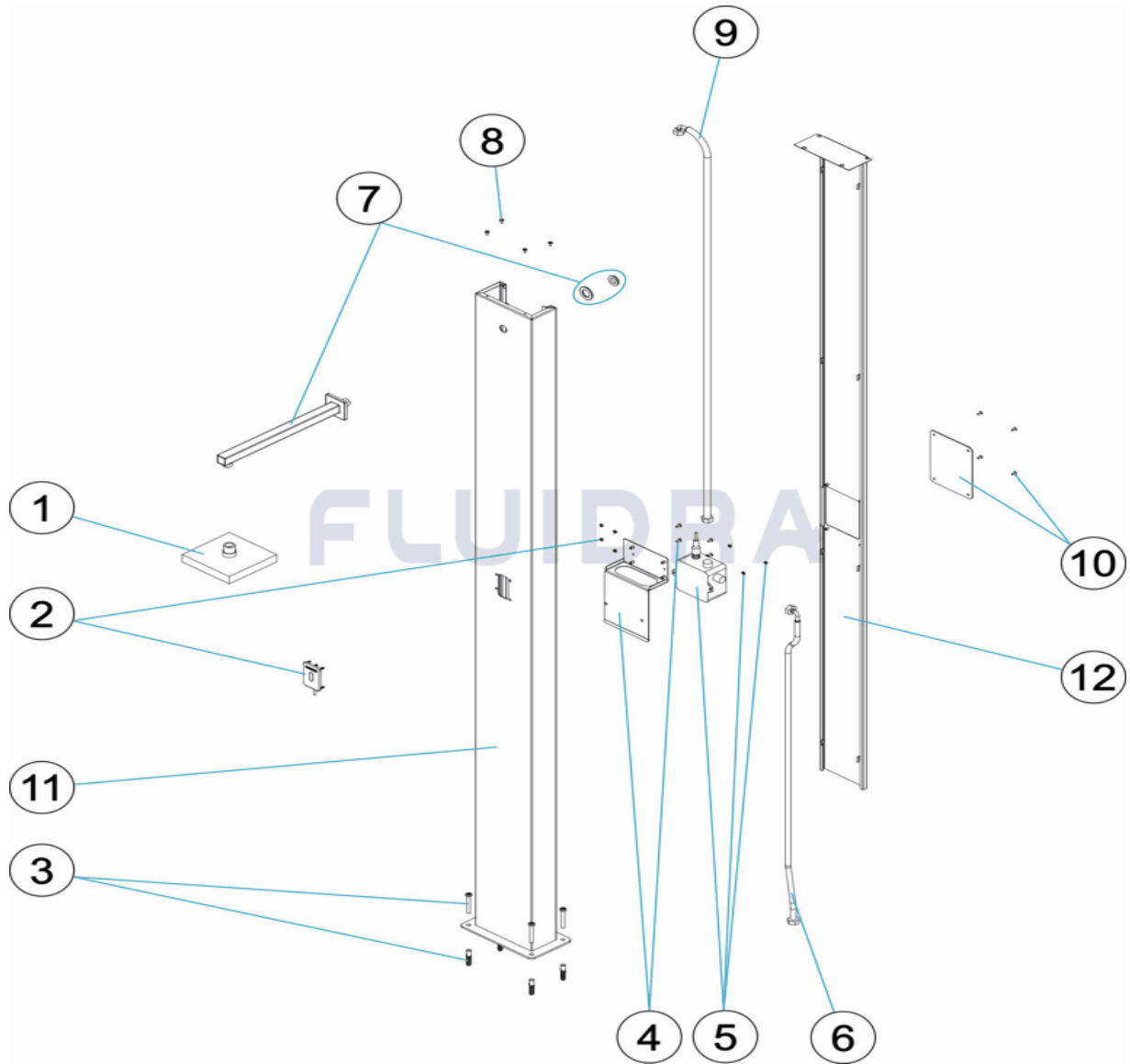


**ITALIANO**

POS	CODICE	DESCRIZIONE	QUANTITA'	POS	CODICE	DESCRIZIONE	QUANTITA'
1	4401040052	SPRUZZATORE		7	4401040053	BRACCIO DOCCIA	
2	4401040293	SENSORE RIVESTIMENTO		8	4401040296	BULLONERIA PER FISSAGGIO	
3	4401040056	CONGIUNTO FISSAGGIO		9	4401040217	SPINOTTO CODO 1/2" H. - 1/2" H. L=1300 M	
4	4401040294	SUPPORTO PER SENSORE		10	4401040297	COPERCHIO POSTERIORE	
5	4401040295	SENSORE DI PROSSIMITA'		11	74102R0100	CORPO DOCCIA	
6	4401040054	FLESSIBILE		12	74102R0400	COPERCHIO POSTERIORE	

CODE **74102**

BESCHREIBUNG: **DUSCHE NIAGARA TOUCHLESS**

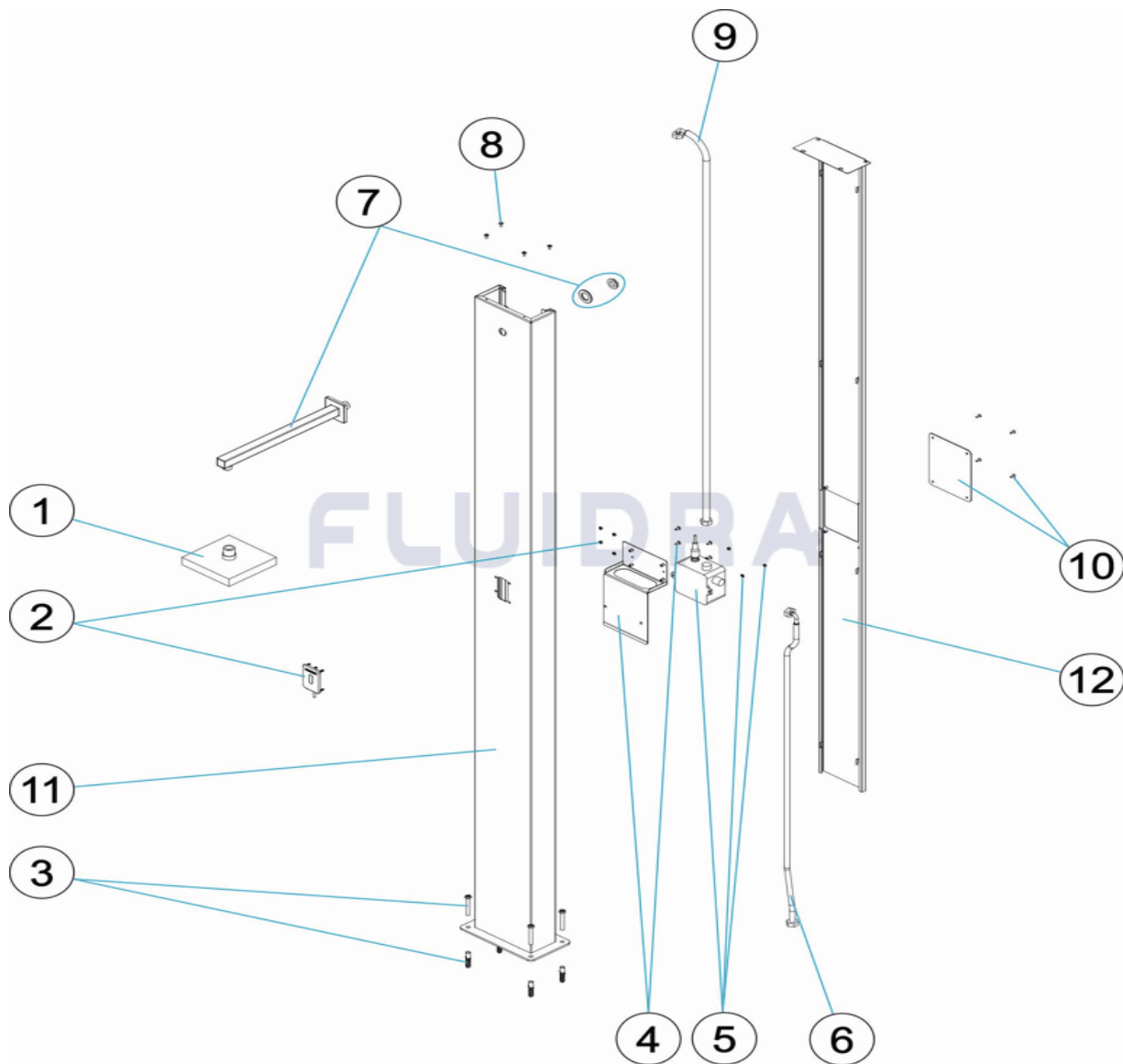


**DEUTSCH**

POS	CODE	BESCHREIBUNG	MENGE	POS	CODE	BESCHREIBUNG	MENGE
1	4401040052	DUSCHKOPF		7	4401040053	DUSCHARM	
2	4401040293	SENSOR KAPPEN		8	4401040296	FIXIERSCHRAUBEN	
3	4401040056	SET KLEMMKEIL		9	4401040217	SCHLAUCHLEITUNG WINKEL 1/2" MUFFE -	
4	4401040294	HALTERUNG SENSOR		10	4401040297	ABDECKUNG HINTEN	
5	4401040295	NÄHERUNGSSENSOR		11	74102R0100	DUSCHEINHEIT	
6	4401040054	FLEXSCHLAUCH OBEN		12	74102R0400	ABDECKUNG HINTEN	

CODIGO **74102**

DESCRIÇÃO: **DUCHE NIAGARA TOUCHLESS**



**PORTUGUES**

POS	CODIGO	DESCRIÇÃO	JANTIDADE	POS	CODIGO	DESCRIÇÃO	JANTIDADE
1	4401040052	DIFUSOR		7	4401040053	BRAÇO CHUVEIRO	
2	4401040293	PLACA DECORATIVA SENSOR		8	4401040296	CONJ. PARAFUSOS	
3	4401040056	CJTO. FIXAÇÃO		9	4401040217	MANGA CODO 1/2" H. - 1/2" H. L=1300 M/M	
4	4401040294	SUPORTE SENSOR		10	4401040297	TAMPA TRASEIRA	
5	4401040295	SENSOR DE PROXIMIDADE		11	74102R0100	CORPO DE CHUVEIRO	
6	4401040054	FLEXO		12	74102R0400	TAMPA POSTERIOR	