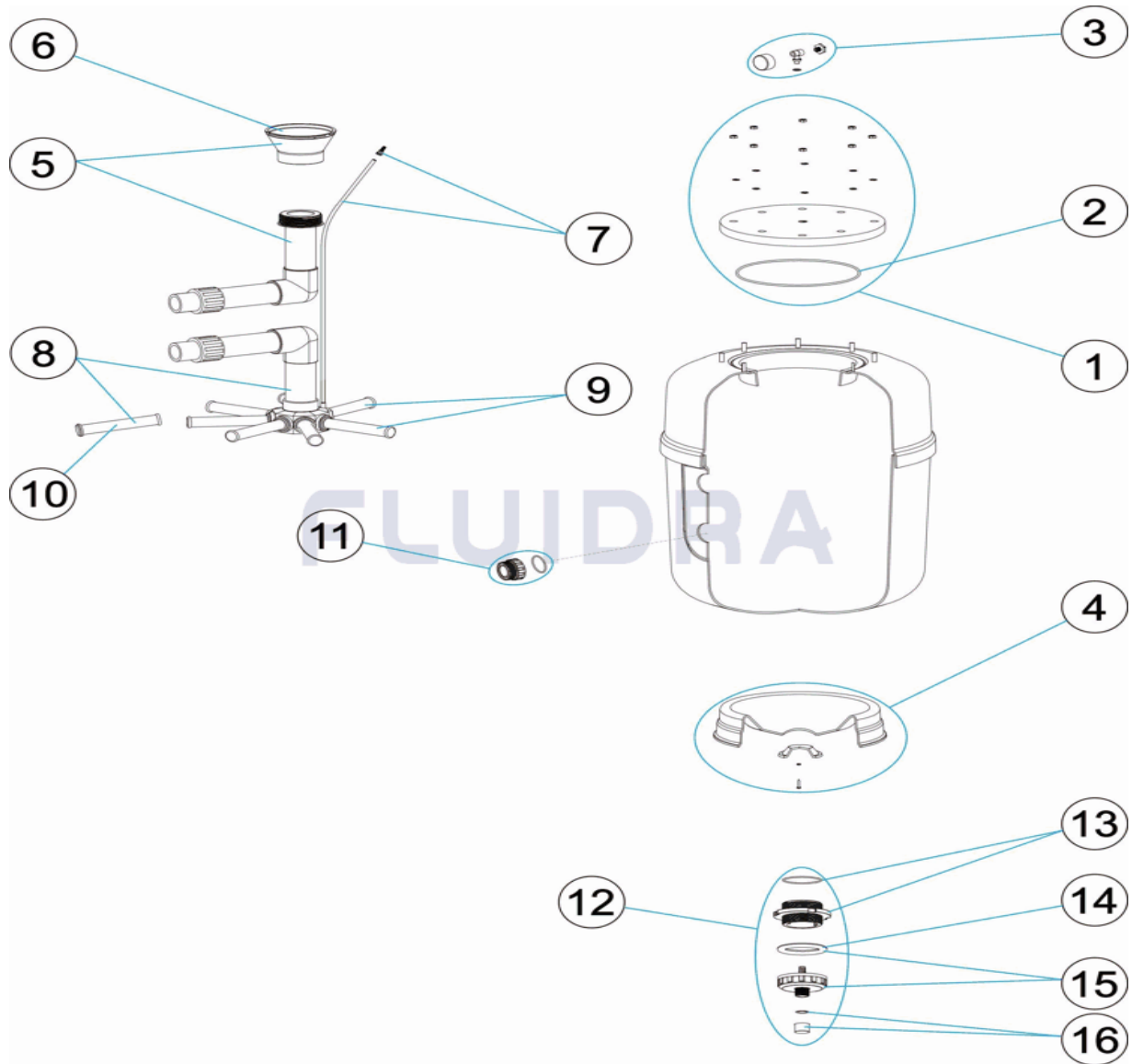


CODIGO 64998, 64999, 65000, 65002

DESCRIPCION: FILTRO EUROPA PRO LONG T/G/M



ESPAÑOL

| POS | CODIGO | DESCRIPCION | CANTIDAD | POS | CODIGO | DESCRIPCION | CANTIDAD |
|-----|--------------|----------------------|----------|-----|--------------|------------------------------|----------|
| 1 | 4404040001 | TAPA FILTRO + JUNTA | | 7 | * 4404300707 | TUBO RIGIDO L-845 | |
| 2 | 4404040002 | JUNTA TORICA TAPA | | 8 | * 4404010172 | CJTO. COLECTOR D. 500 | |
| 3 | 4404180404 | MANOMETRO COMPLETO | | 8 | * 4404040023 | CJTO. COLECTOR D. 600 | |
| 4 | * 4404010134 | PIE FILTRO | | 8 | * 4404010174 | CJTO. COLECTOR D. 750 | |
| 4 | * 4404040004 | PIE FILTRO D. 600 | | 8 | * 4404040018 | CJTO. COLECTOR D. 900 | |
| 4 | * 4404010299 | PIE FILTRO 33 | | 9 | * 4404010025 | CJTO. BRAZOS COLECTOR D. 400 | |
| 4 | * 4404040006 | PIE FILTRO D. 900 | | 9 | * 4404010026 | CJTO. BRAZOS COLECTOR | |
| 5 | * 4404040019 | CJTO. DIFUSOR D. 500 | | 9 | * 4404010027 | CJTO. BRAZOS COLECTOR D. 650 | |
| 5 | * 4404040020 | CJTO. DIFUSOR D. 600 | | 9 | * 4404010048 | CJTO. BRAZOS COLECTOR D. 750 | |
| 5 | * 4404040021 | CJTO. DIFUSOR D. 750 | | 10 | * 4404300917 | BRAZO COLECTOR 1" 110 M " | |
| 5 | * 4404040022 | CJTO. DIFUSOR D. 900 | | 10 | * 4404300915 | BRAZO COLECTOR 1" 175 M " | |
| 6 | * 4404301004 | CONO DIFUSOR D.50 | | 10 | * 4404300916 | BRAZO COLECTOR 1" 225 M " | |
| 6 | * 4404300910 | CONO DIFUSOR D. 63 | | 10 | * 4404290109 | BRAZO COLECTOR 1" 265 M " | |

CODIGO 64998, 64999, 65000, 65002

DESCRIPCION: FILTRO EUROPA PRO LONG T/G/M

| | | | | | |
|----|--------------|-------------------------------------|----|--------------|----------------------------------|
| 6 | * 4404190324 | CONO DIFUSOR D.75 | 11 | * 4404040103 | RACORD 1 1/2" + JUNTA TORIC " |
| 7 | * 4404301003 | PURGA AIRE + TUBO L=670 | 11 | * 4404040112 | RACORD SALIDA 2" + JUNTA TORIC " |
| 11 | * 4404290108 | RACOR SALIDA 2 1/2" + JUNTA TORIC " | 14 | 4404180108 | JUNTA TORICA FILTRO |
| 12 | 4404040010 | DESCARGA ARENA-AGUA | 15 | 4404290106 | TUERCA DESCARGA EXTERIOR |
| 13 | 4404040011 | TAPA VACIADO ARENA | 16 | 4404040012 | VALVULA DE SEGURIDAD |

CODIGO 64998, 64999, 65000, 65002

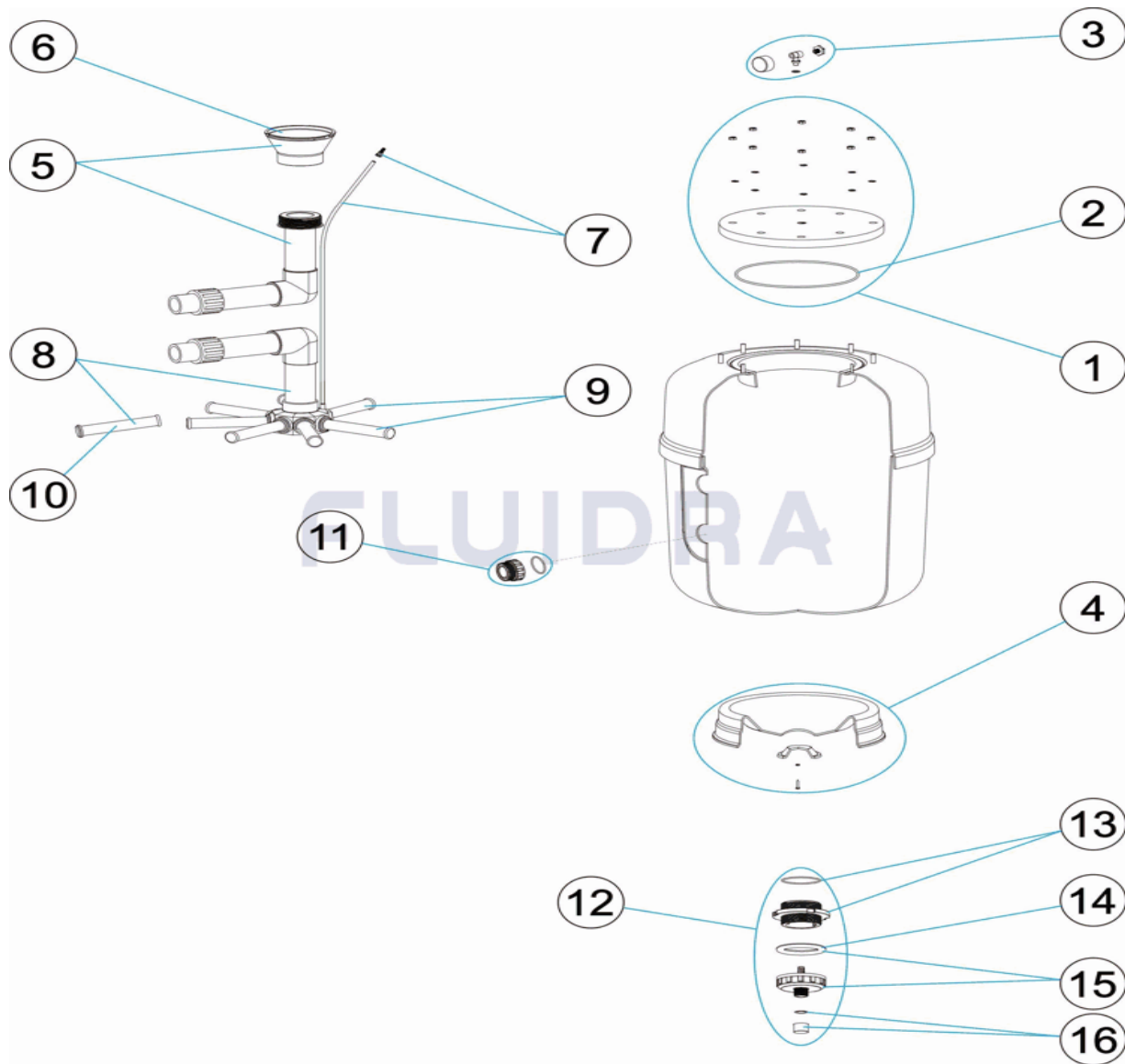
DESCRIPCION: FILTRO EUROPA PRO LONG T/G/M

OBSERVACIONES

| POS | CODIGO | OBSERVACIONES |
|-----|--------------|---------------------------|
| 4 | * 4404010134 | PARA: 64998 |
| 4 | * 4404040004 | PARA: 64999 |
| 4 | * 4404010299 | PARA: 65000 |
| 4 | * 4404040006 | PARA: 65002 |
| 5 | * 4404040019 | PARA: 64998 |
| 5 | * 4404040020 | PARA: 64999 |
| 5 | * 4404040021 | PARA: 65000 |
| 5 | * 4404040022 | PARA: 65002 |
| 6 | * 4404301004 | PARA: 64998 |
| 6 | * 4404300910 | PARA: 64999, 65000 |
| 6 | * 4404190324 | PARA: 65002 |
| 7 | * 4404301003 | PARA: 64998, 64999, 65000 |
| 7 | * 4404300707 | PARA: 65002 |
| 8 | * 4404010172 | PARA: 64998 |
| 8 | * 4404040023 | PARA: 64999 |
| 8 | * 4404010174 | PARA: 65000 |
| 8 | * 4404040018 | PARA: 65002 |
| 9 | * 4404010025 | PARA: 64998 |
| 9 | * 4404010026 | PARA: 64999 |
| 9 | * 4404010027 | PARA: 65000 |
| 9 | * 4404010048 | PARA: 65002 |
| 10 | * 4404300917 | PARA: 64998 [4UT] |
| 10 | * 4404300915 | PARA: 64999 [4UT] |
| 10 | * 4404300916 | PARA: 65000 [6UT] |
| 10 | * 4404290109 | PARA: 65002 [6UT] |
| 11 | * 4404040103 | PARA: 64998 |
| 11 | * 4404040112 | PARA: 64999, 65000 |
| 11 | * 4404290108 | PARA: 65002 |

CODE **64998, 64999, 65000, 65002**

DESCRIPTION: **FILTRE EUROPA PRO LONG T/G/M**



FRANCAIS

| POS | CODE | DESCRIPTION | QUANTITE | POS | CODE | DESCRIPTION | QUANTITE |
|-----|--------------|--------------------------------|----------|-----|--------------|-------------------------------------|----------|
| 1 | 4404040001 | COUVERCLE FILTRE + JOINT | | 7 | * 4404300707 | TUBE RIGIDE L-845 | |
| 2 | 4404040002 | JOINT TORIQUE COUVERCLE | | 8 | * 4404010172 | ENSEMBLE COLLECTEUR D. 500 | |
| 3 | 4404180404 | MANOMETRE COMPLET | | 8 | * 4404040023 | ENSEMBLE COLLECTEUR D. 600 | |
| 4 | * 4404010134 | SOCLE FILTRE | | 8 | * 4404010174 | ENSEMBLE COLLECTEUR D. 750 | |
| 4 | * 4404040004 | SOCLE FILTRE D. 600 | | 8 | * 4404040018 | ENSEMBLE COLLECTEUR D. 900 | |
| 4 | * 4404010299 | SOCLE FILTRE 33 | | 9 | * 4404010025 | ENSEMBLE BRAS DE REPARTITEUR D. 400 | |
| 4 | * 4404040006 | SOCLE FILTRE D. 900 | | 9 | * 4404010026 | ENSEMBLE BRAS DE REPARTITEUR | |
| 5 | * 4404040019 | ENSEMBLE DIFFUSEUR D. 500 | | 9 | * 4404010027 | ENSEMBLE BRAS DE REPARTITEUR D. 650 | |
| 5 | * 4404040020 | ENSEMBLE DIFFUSEUR D. 600 | | 9 | * 4404010048 | ENSEMBLE BRAS DE REPARTITEUR D. 750 | |
| 5 | * 4404040021 | ENSEMBLE DIFFUSEUR D. 750 | | 10 | * 4404300917 | BRAS DE REPARTITEUR 1" 110 M " | |
| 5 | * 4404040022 | ENSEMBLE DIFFUSEUR D. 900 | | 10 | * 4404300915 | BRAS DE REPARTITEUR 1" 175 M " | |
| 6 | * 4404301004 | DIFUSOR CONIQUE SUPÉRIOR D. 50 | | 10 | * 4404300916 | BRAS DE REPARTITEUR 1" 225 M " | |
| 6 | * 4404300910 | DIFUSOR CONIQUE SUPÉRIOR D. 63 | | 10 | * 4404290109 | BRAS DE REPARTITEUR 1" 265 M/M " | |

*** VOIR FICHE D'OBSERVATIONS**

CODE **64998, 64999, 65000, 65002**

DESCRIPTION: **FILTRE EUROPA PRO LONG T/G/M**

| | | | | | |
|----|--------------|---------------------------------------|----|--------------|------------------------------------|
| 6 | * 4404190324 | DIFUSOR CONIQUE SUPÉRIOR D. 75 | 11 | * 4404040103 | RACCORD 1 1/2" + JOINT TORIQU " |
| 7 | * 4404301003 | PURGE AIR + TUBE L=670 | 11 | * 4404040112 | RACCORD SORTIE 2" + JOINT TORIQU " |
| 11 | * 4404290108 | RACCOR SORTIE 2 1/2" + JOINT TORIQU " | 14 | 4404180108 | JOINT TORIQUE FILTRE |
| 12 | 4404040010 | DÉCHARGE DE SABLE - EAU | 15 | 4404290106 | RACCORD DÉCHARGE EXTÉRIEUR |
| 13 | 4404040011 | BOUCHON PURGE SABLE | 16 | 4404040012 | VANNE DE SÉCURITÉ |

CODE **64998, 64999, 65000, 65002**

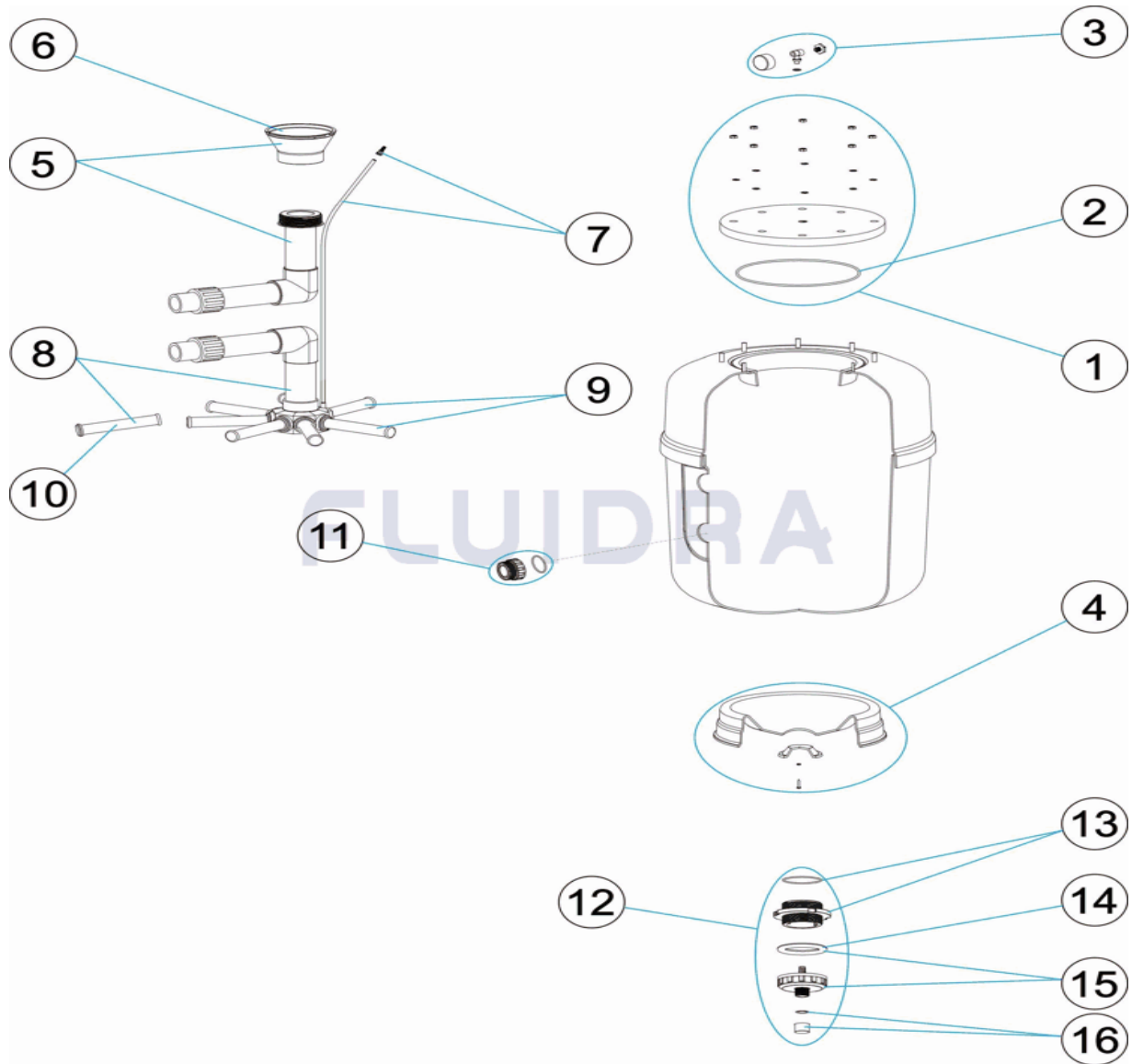
DESCRIPTION: **FILTRE EUROPA PRO LONG T/G/M**

OBSERVATIONS

| POS | CODE | OBSERVATIONS |
|-----|--------------|---------------------------|
| 4 | * 4404010134 | POUR: 64998 |
| 4 | * 4404040004 | POUR: 64999 |
| 4 | * 4404010299 | POUR: 65000 |
| 4 | * 4404040006 | POUR: 65002 |
| 5 | * 4404040019 | POUR: 64998 |
| 5 | * 4404040020 | POUR: 64999 |
| 5 | * 4404040021 | POUR: 65000 |
| 5 | * 4404040022 | POUR: 65002 |
| 6 | * 4404301004 | POUR: 64998 |
| 6 | * 4404300910 | POUR: 64999, 65000 |
| 6 | * 4404190324 | POUR: 65002 |
| 7 | * 4404301003 | POUR: 64998, 64999, 65000 |
| 7 | * 4404300707 | POUR: 65002 |
| 8 | * 4404010172 | POUR: 64998 |
| 8 | * 4404040023 | POUR: 64999 |
| 8 | * 4404010174 | POUR: 65000 |
| 8 | * 4404040018 | POUR: 65002 |
| 9 | * 4404010025 | POUR: 64998 |
| 9 | * 4404010026 | POUR: 64999 |
| 9 | * 4404010027 | POUR: 65000 |
| 9 | * 4404010048 | POUR: 65002 |
| 10 | * 4404300917 | POUR: 64998 [4UT] |
| 10 | * 4404300915 | POUR: 64999 [4UT] |
| 10 | * 4404300916 | POUR: 65000 [6UT] |
| 10 | * 4404290109 | POUR: 65002 [6UT] |
| 11 | * 4404040103 | POUR: 64998 |
| 11 | * 4404040112 | POUR: 64999, 65000 |
| 11 | * 4404290108 | POUR: 65002 |

CODE **64998, 64999, 65000, 65002**

DESCRIPTION: **EUROPA PRO LONG FILTER T/G/M**



ENGLISH

| POS | CODE | DESCRIPTION | QUANTITY | POS | CODE | DESCRIPTION | QUANTITY |
|-----|--------------|------------------------------|----------|-----|--------------|------------------------------|----------|
| 1 | 4404040001 | FILTER LID + GASKET | | 7 | * 4404300707 | RIGID PIPE L-845 | |
| 2 | 4404040002 | LID 'O' RING | | 8 | * 4404010172 | MANIFOLD ASSEMBLY D. 500 | |
| 3 | 4404180404 | COMPLETE PRESSURE GAUGE UNIT | | 8 | * 4404040023 | MANIFOLD ASSEMBLY D. 600 | |
| 4 | * 4404010134 | FILTER BASE | | 8 | * 4404010174 | MANIFOLD ASSEMBLY D. 750 | |
| 4 | * 4404040004 | FILTER BASE D. 600 | | 8 | * 4404040018 | MANIFOLD ASSEMBLY D. 900 | |
| 4 | * 4404010299 | FILTER BASE 33 | | 9 | * 4404010025 | MANIFOLD ARM ASSEMBLY D. 400 | |
| 4 | * 4404040006 | FILTER BASE D. 900 | | 9 | * 4404010026 | MANIFOLD ARM ASSEMBLY | |
| 5 | * 4404040019 | DIFFUSER ASSEMBLY D. 500 | | 9 | * 4404010027 | MANIFOLD ARM ASSEMBLY D. 650 | |
| 5 | * 4404040020 | DIFFUSER ASSEMBLY D. 600 | | 9 | * 4404010048 | MANIFOLD ARM ASSEMBLY D. 750 | |
| 5 | * 4404040021 | DIFFUSER ASSEMBLY D. 750 | | 10 | * 4404300917 | MANIFOLD ARM 1" 110 M " | |
| 5 | * 4404040022 | DIFFUSER ASSEMBLY D. 900 | | 10 | * 4404300915 | MANIFOLD ARM 1" 175 M " | |
| 6 | * 4404301004 | DIFFUSER CONE D. 50 | | 10 | * 4404300916 | MANIFOLD ARM 1" 225 M " | |
| 6 | * 4404300910 | DIFFUSER CONE D. 63 | | 10 | * 4404290109 | COLLECTOR ARM 1" 265 M " | |

CODE **64998, 64999, 65000, 65002**

DESCRIPTION: **EUROPA PRO LONG FILTER T/G/M**

| | | | | | |
|----|--------------|------------------------------|----|--------------|-----------------------------|
| 6 | * 4404190324 | DIFFUSER CONE D. 75 | 11 | * 4404040103 | FITTING 1 1/2" + O'RIN " |
| 7 | * 4404301003 | AIR PURGE + PIPE L=670 | 11 | * 4404040112 | 2" OUTLET FITTING + O'RIN " |
| 11 | * 4404290108 | OUTLETUNION 2 1/2" + O-RIN " | 14 | 4404180108 | FILTER 'O' RING |
| 12 | 4404040010 | SAND - WATER UNLOAD | 15 | 4404290106 | SCREWDISCHARGE PORT EXTEROR |
| 13 | 4404040011 | SAND DRAINAGE COVER | 16 | 4404040012 | SAFETY VALVE |

CODE **64998, 64999, 65000, 65002**

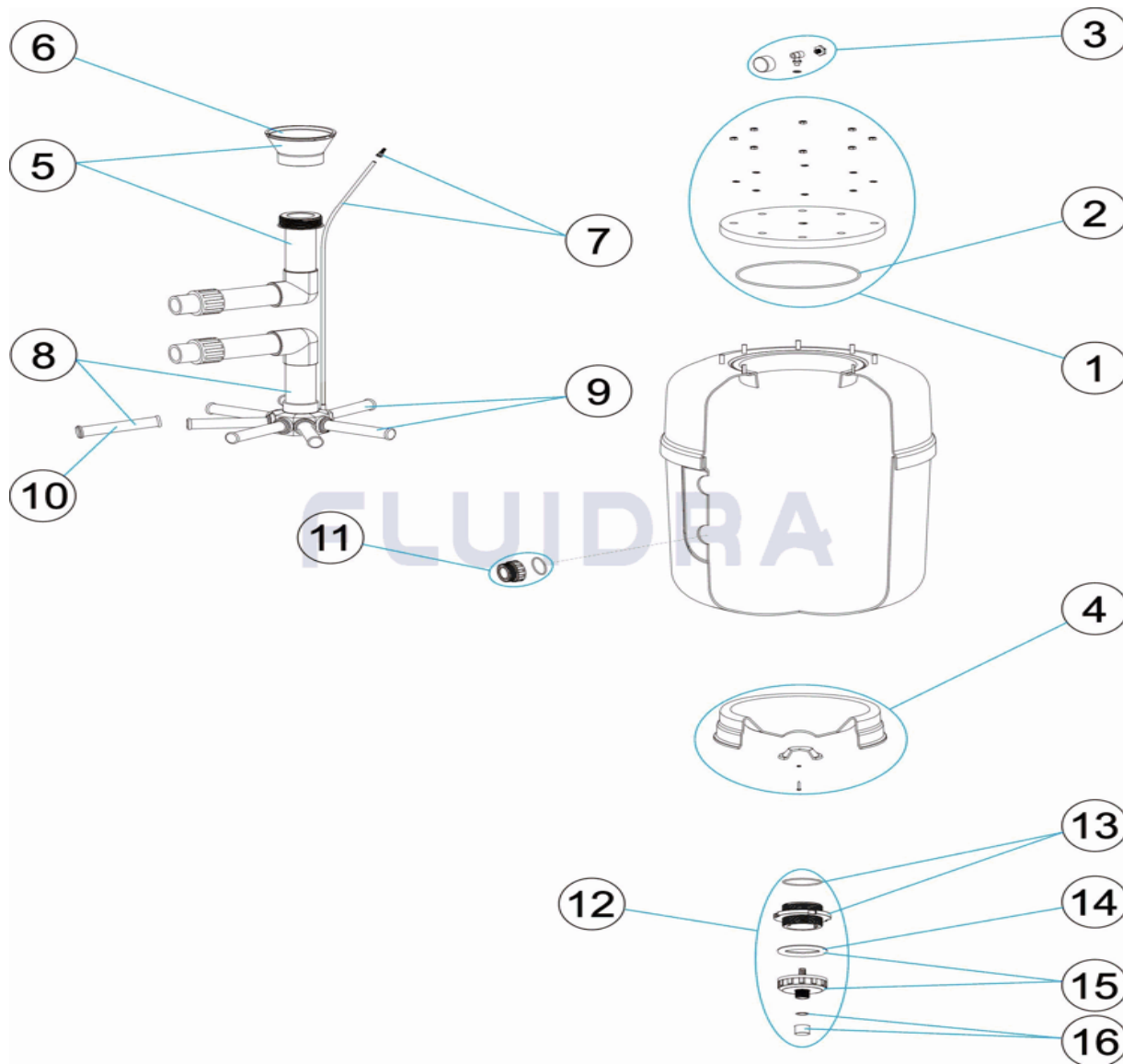
DESCRIPTION: **EUROPA PRO LONG FILTER T/G/M**

OBSERVATIONS

| POS | CODE | OBSERVATIONS |
|-----|--------------|--------------------------|
| 4 | * 4404010134 | FOR: 64998 |
| 4 | * 4404040004 | FOR: 64999 |
| 4 | * 4404010299 | FOR: 65000 |
| 4 | * 4404040006 | FOR: 65002 |
| 5 | * 4404040019 | FOR: 64998 |
| 5 | * 4404040020 | FOR: 64999 |
| 5 | * 4404040021 | FOR: 65000 |
| 5 | * 4404040022 | FOR: 65002 |
| 6 | * 4404301004 | FOR: 64998 |
| 6 | * 4404300910 | FOR: 64999, 65000 |
| 6 | * 4404190324 | FOR: 65002 |
| 7 | * 4404301003 | FOR: 64998, 64999, 65000 |
| 7 | * 4404300707 | FOR: 65002 |
| 8 | * 4404010172 | FOR: 64998 |
| 8 | * 4404040023 | FOR: 64999 |
| 8 | * 4404010174 | FOR: 65000 |
| 8 | * 4404040018 | FOR: 65002 |
| 9 | * 4404010025 | FOR: 64998 |
| 9 | * 4404010026 | FOR: 64999 |
| 9 | * 4404010027 | FOR: 65000 |
| 9 | * 4404010048 | FOR: 65002 |
| 10 | * 4404300917 | FOR: 64998 [4UT] |
| 10 | * 4404300915 | FOR: 64999 [4UT] |
| 10 | * 4404300916 | FOR: 65000 [6UT] |
| 10 | * 4404290109 | FOR: 65002 [6UT] |
| 11 | * 4404040103 | FOR: 64998 |
| 11 | * 4404040112 | FOR: 64999, 65000 |
| 11 | * 4404290108 | FOR: 65002 |

CODICE **64998, 64999, 65000, 65002**

DESCRIZIONE: **FILTRO EUROPA PRO LONGT/G/M**



ITALIANO

| POS | CODICE | DESCRIZIONE | QUANTITA' | POS | CODICE | DESCRIZIONE | QUANTITA' |
|-----|--------------|--------------------------------|-----------|-----|--------------|-----------------------------------|-----------|
| 1 | 4404040001 | COPERCHIO FILTRO + GUARNIZIONE | | 7 | * 4404300707 | TUBO RIGIDO L-845 | |
| 2 | 4404040002 | O-RING COPERCHIO | | 8 | * 4404010172 | KIT COLLETTORE D. 500 | |
| 3 | 4404180404 | MANOMETRO COMPLETO | | 8 | * 4404040023 | KIT COLLETTORE D. 600 | |
| 4 | * 4404010134 | BASE FILTRO | | 8 | * 4404010174 | KIT COLLETTORE D. 750 | |
| 4 | * 4404040004 | BASE FILTRO D. 600 | | 8 | * 4404040018 | KIT COLLETTORE D. 900 | |
| 4 | * 4404010299 | BASE FILTRO 33 | | 9 | * 4404010025 | GRUPPO CANDELOTTO COLLECTORE D. 4 | |
| 4 | * 4404040006 | BASE FILTRO D. 900 | | 9 | * 4404010026 | GRUPPO CANDELOTTO COLLECTORE | |
| 5 | * 4404040019 | RACCORDO DIFFUSORE D. 500 | | 9 | * 4404010027 | GRUPPO CANDELOTTO COLLECTORE D. 6 | |
| 5 | * 4404040020 | RACCORDO DIFFUSORE D. 600 | | 9 | * 4404010048 | GRUPPO CANDELOTTO COLLECTORE D. 7 | |
| 5 | * 4404040021 | RACCORDO DIFFUSORE D. 750 | | 10 | * 4404300917 | CANDELOTTO COLLECTORE 1" 110 M " | |
| 5 | * 4404040022 | RACCORDO DIFFUSORE D. 900 | | 10 | * 4404300915 | CANDELOTTO COLLECTORE 1" 175 M " | |
| 6 | * 4404301004 | CONO DIFFUSORE D. 50 | | 10 | * 4404300916 | CANDELOTTO COLLECTORE 1" 225 M " | |
| 6 | * 4404300910 | CONO DIFFUSORE D. 63 | | 10 | * 4404290109 | CANDELOTTO 1" 265 M/M " | |

*** SI FACCIA RIFERIMENTO AL FOGLIO DELLE OSSERVAZIONI**

CODICE **64998, 64999, 65000, 65002**

DESCRIZIONE: FILTRO EUROPA PRO LONGT/G/M

| | | | | | |
|----|--------------|----------------------------------|----|--------------|-----------------------------|
| 6 | * 4404190324 | CONO DIFFUSORE D. 75 | 11 | * 4404040103 | RACCORDO 1 1/2" + O-RIN " |
| 7 | * 4404301003 | SPURGO ARIA + TUBO L=670 | 11 | * 4404040112 | RACCORDO USCITA 2" + O-RING |
| 11 | * 4404290108 | RACCORDO USCITA 2 1/2" + O-RIN " | 14 | 4404180108 | O-RING FILTRO |
| 12 | 4404040010 | SCARICA SABBIA - ACQUA | 15 | 4404290106 | GHIERA SCARICO ESTERNA |
| 13 | 4404040011 | COPERCHIO SVUOTAMENTO SABBIA | 16 | 4404040012 | VALVOLA DI SICUREZZA |

CODICE **64998, 64999, 65000, 65002**

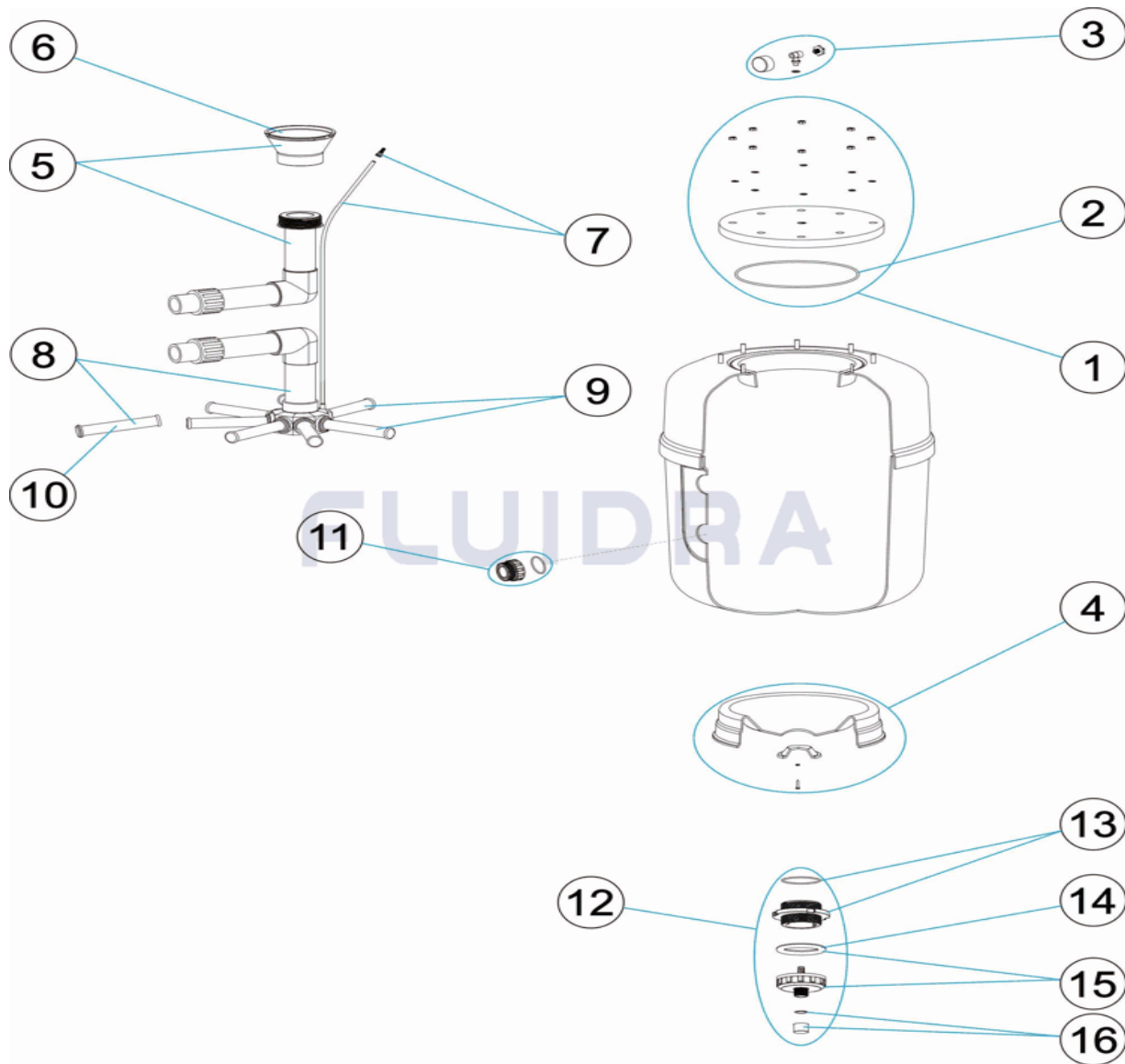
DESCRIZIONE: **FILTRO EUROPA PRO LONGT/G/M**

OSSERVAZIONI

| POS | CODICE | OSSERVAZIONI |
|-----|--------------|--------------------------|
| 4 | * 4404010134 | PER: 64998 |
| 4 | * 4404040004 | PER: 64999 |
| 4 | * 4404010299 | PER: 65000 |
| 4 | * 4404040006 | PER: 65002 |
| 5 | * 4404040019 | PER: 64998 |
| 5 | * 4404040020 | PER: 64999 |
| 5 | * 4404040021 | PER: 65000 |
| 5 | * 4404040022 | PER: 65002 |
| 6 | * 4404301004 | PER: 64998 |
| 6 | * 4404300910 | PER: 64999, 65000 |
| 6 | * 4404190324 | PER: 65002 |
| 7 | * 4404301003 | PER: 64998, 64999, 65000 |
| 7 | * 4404300707 | PER: 65002 |
| 8 | * 4404010172 | PER: 64998 |
| 8 | * 4404040023 | PER: 64999 |
| 8 | * 4404010174 | PER: 65000 |
| 8 | * 4404040018 | PER: 65002 |
| 9 | * 4404010025 | PER: 64998 |
| 9 | * 4404010026 | PER: 64999 |
| 9 | * 4404010027 | PER: 65000 |
| 9 | * 4404010048 | PER: 65002 |
| 10 | * 4404300917 | PER: 64998 [4UT] |
| 10 | * 4404300915 | PER: 64999 [4UT] |
| 10 | * 4404300916 | PER: 65000 [6UT] |
| 10 | * 4404290109 | PER: 65002 [6UT] |
| 11 | * 4404040103 | PER: 64998 |
| 11 | * 4404040112 | PER: 64999, 65000 |
| 11 | * 4404290108 | PER: 65002 |

CODE **64998, 64999, 65000, 65002**

BESCHREIBUNG: **FILTER EUROPA PRO LONG T/G/M**



DEUTSCH

| POS | CODE | BESCHREIBUNG | MENGE | POS | CODE | BESCHREIBUNG | MENGE |
|-----|--------------|-----------------------------|-------|-----|--------------|------------------------------------|-------|
| 1 | 4404040001 | FILTERDECKEL UND DICHTUNG | | 7 | * 4404300707 | ROHR HART L - 845 | |
| 2 | 4404040002 | O-RING ABDECKUNG | | 8 | * 4404010172 | SAMMELROHRSET D. 500 | |
| 3 | 4404180404 | MANOMETER KOMPLETT | | 8 | * 4404040023 | SAMMELROHRSET D. 600 | |
| 4 | * 4404010134 | FILTERFUSS | | 8 | * 4404010174 | SAMMELROHRSET D. 750 | |
| 4 | * 4404040004 | FILTERFUSS D. 600 | | 8 | * 4404040018 | SAMMELROHRSET D. 900 | |
| 4 | * 4404010299 | FILTERFUSS 33 | | 9 | * 4404010025 | SET FILTERSTERN-SCHLITZROHR D. 400 | |
| 4 | * 4404040006 | FILTERFUSS D. 900 | | 9 | * 4404010026 | SET FILTERSTERN-SCHLITZROHR | |
| 5 | * 4404040019 | SET WASSERVERTEILER D. 500 | | 9 | * 4404010027 | SET FILTERSTERN-SCHLITZROHR D. 650 | |
| 5 | * 4404040020 | SET WASSERVERTEILER D. 600 | | 9 | * 4404010048 | SET FILTERSTERN-SCHLITZROHR D. 750 | |
| 5 | * 4404040021 | SET WASSERVERTEILER D. 750 | | 10 | * 4404300917 | FILTERSTERN-SCHLITZROHR 1" 110 M " | |
| 5 | * 4404040022 | SET WASSERVERTEILER D. 900 | | 10 | * 4404300915 | FILTERSTERN-SCHLITZROHR 1" 175 M " | |
| 6 | * 4404301004 | KEGEL WASSERVERTEILER D. 50 | | 10 | * 4404300916 | FILTERSTERN-SCHLITZROHR 1" 225 M " | |
| 6 | * 4404300910 | KEGEL WASSERVERTEILER D. 63 | | 10 | * 4404290109 | FILTERSTERN-SCHLITZROHR 1" 265 M " | |

CODE **64998, 64999, 65000, 65002**

BESCHREIBUNG: **FILTER EUROPA PRO LONG T/G/M**

| | | | | | |
|----|--------------|-------------------------------------|----|--------------|-------------------------------------|
| 6 | * 4404190324 | KEGEL WASSERVERTEILER D. 75 | 11 | * 4404040103 | GEWINDESTÜCK 1 1/2" UND O-RIN " |
| 7 | * 4404301003 | ENTLÜFTUNG UND ROHR L=670 | 11 | * 4404040112 | GEWINDESTÜCK AUSGANG 2" UND O-RIN ' |
| 11 | * 4404290108 | GEWINDESTÜCK AUSGANG 2 1/2" UND O-I | 14 | 4404180108 | O-RING FILTER |
| 12 | 4404040010 | SAND AUSLASS - ABLASS | 15 | 4404290106 | MUTTER AUSLASS AUSSEN |
| 13 | 4404040011 | ABDECKUNG SAND AUSLASS | 16 | 4404040012 | SICHERHEITSVENTIL |

CODE **64998, 64999, 65000, 65002**

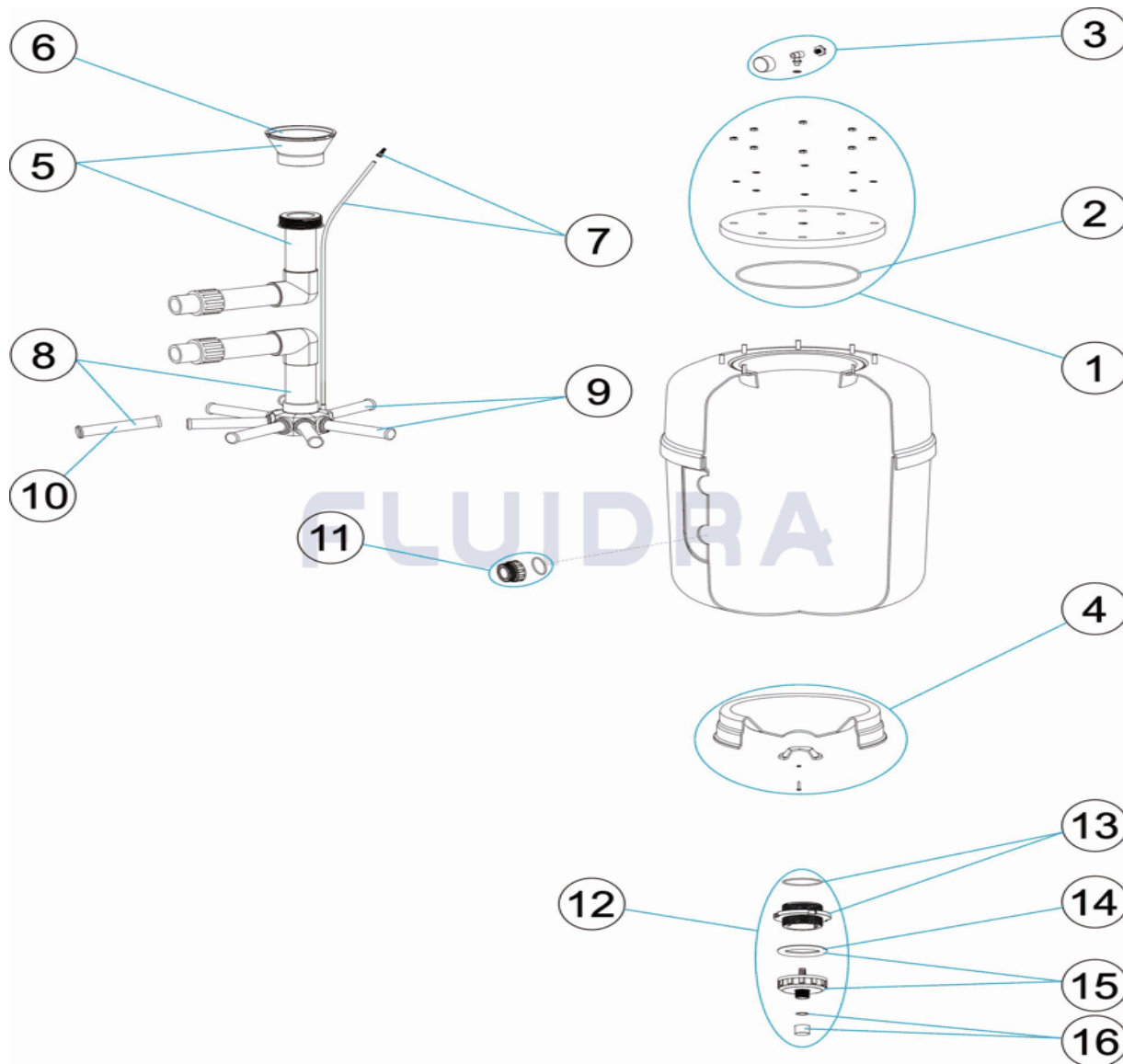
BESCHREIBUNG: **FILTER EUROPA PRO LONG T/G/M**

HINWEISE

| POS | CODE | HINWEISE |
|-----|--------------|--------------------------|
| 4 | * 4404010134 | FÜR: 64998 |
| 4 | * 4404040004 | FÜR: 64999 |
| 4 | * 4404010299 | FÜR: 65000 |
| 4 | * 4404040006 | FÜR: 65002 |
| 5 | * 4404040019 | FÜR: 64998 |
| 5 | * 4404040020 | FÜR: 64999 |
| 5 | * 4404040021 | FÜR: 65000 |
| 5 | * 4404040022 | FÜR: 65002 |
| 6 | * 4404301004 | FÜR: 64998 |
| 6 | * 4404300910 | FÜR: 64999, 65000 |
| 6 | * 4404190324 | FÜR: 65002 |
| 7 | * 4404301003 | FÜR: 64998, 64999, 65000 |
| 7 | * 4404300707 | FÜR: 65002 |
| 8 | * 4404010172 | FÜR: 64998 |
| 8 | * 4404040023 | FÜR: 64999 |
| 8 | * 4404010174 | FÜR: 65000 |
| 8 | * 4404040018 | FÜR: 65002 |
| 9 | * 4404010025 | FÜR: 64998 |
| 9 | * 4404010026 | FÜR: 64999 |
| 9 | * 4404010027 | FÜR: 65000 |
| 9 | * 4404010048 | FÜR: 65002 |
| 10 | * 4404300917 | FÜR: 64998 [4UT] |
| 10 | * 4404300915 | FÜR: 64999 [4UT] |
| 10 | * 4404300916 | FÜR: 65000 [6UT] |
| 10 | * 4404290109 | FÜR: 65002 [6UT] |
| 11 | * 4404040103 | FÜR: 64998 |
| 11 | * 4404040112 | FÜR: 64999, 65000 |
| 11 | * 4404290108 | FÜR: 65002 |

CODIGO **64998, 64999, 65000, 65002**

DESCRICAÇÃO: **FILTRO EUROPA PRO LONG T/G/M**



PORTUGUES

| POS | CODIGO | DESCRICAÇÃO | JANTIDADE | POS | CODIGO | DESCRICAÇÃO | JANTIDADE |
|-----|--------------|----------------------|-----------|-----|--------------|-----------------------------|-----------|
| 1 | 4404040001 | TAMPA FILTRO + JUNTA | | 7 | * 4404300707 | TUBO RÍGIDO L-845 | |
| 2 | 4404040002 | JUNTA TÓRICA TAMPA | | 8 | * 4404010172 | CJTO. COLECTOR D. 500 | |
| 3 | 4404180404 | MANÓMETRO COMPLETO | | 8 | * 4404040023 | CJTO. COLECTOR D. 600 | |
| 4 | * 4404010134 | PÉ FILTRO | | 8 | * 4404010174 | CJTO. COLECTOR D. 750 | |
| 4 | * 4404040004 | PÉ FILTRO D. 600 | | 8 | * 4404040018 | CJTO. COLECTOR D. 900 | |
| 4 | * 4404010299 | PÉ FILTRO 33 | | 9 | * 4404010025 | CJTO. BRAÇO COLECTOR D. 400 | |
| 4 | * 4404040006 | PÉ FILTRO D. 900 | | 9 | * 4404010026 | CJTO. BRAÇO COLECTOR | |
| 5 | * 4404040019 | CJTO. DIFUSOR D. 500 | | 9 | * 4404010027 | CJTO. BRAÇO COLECTOR D.650 | |
| 5 | * 4404040020 | CJTO. DIFUSOR D. 600 | | 9 | * 4404010048 | CJTO. BRAÇO COLECTOR D. 750 | |
| 5 | * 4404040021 | CJTO. DIFUSOR D. 750 | | 10 | * 4404300917 | BRAÇO COLECTOR 1" 110 M " | |
| 5 | * 4404040022 | CJTO. DIFUSOR D. 900 | | 10 | * 4404300915 | BRAÇO COLECTOR 1" 175 M " | |
| 6 | * 4404301004 | CONO DIFUSOR D. 50 | | 10 | * 4404300916 | BRAÇO COLECTOR 1" 225 M " | |
| 6 | * 4404300910 | CONO DIFUSOR D. 63 | | 10 | * 4404290109 | BRAÇO COLECTOR 1" 265 M/M " | |

CODIGO 64998, 64999, 65000, 65002

DESCRIÇÃO: FILTRO EUROPA PRO LONG T/G/M

| | | | | | |
|----|--------------|--------------------------------------|----|--------------|------------------------------------|
| 6 | * 4404190324 | CONO DIFUSOR D. 75 | 11 | * 4404040103 | RACORD 1 1/2" JUNTA TORIC " |
| 7 | * 4404301003 | PURGA AR + TUBO L=670 | 11 | * 4404040112 | ACOPLADOR SAÍDA 2" + JUNTA TORIC " |
| 11 | * 4404290108 | RACORD DE SAIDA 2 1/2" + JUNTA TÓRIC | 14 | 4404180108 | JUNTA TÓRICA FILTRO |
| 12 | 4404040010 | DESCARREGA AREIA - ÁGUA | 15 | 4404290106 | PORCA DESCARGA EXTERIOR |
| 13 | 4404040011 | TAMPA ESVAZIAMENTO AREIA | 16 | 4404040012 | VÁLVULA DE SEGURANÇA |

CODIGO **64998, 64999, 65000, 65002**

DESCRIÇÃO: FILTRO EUROPA PRO LONG T/G/M

OBSERVACÕES

| POS | CODIGO | OBSERVACÕES |
|-----|--------------|---------------------------|
| 4 | * 4404010134 | PARA: 64998 |
| 4 | * 4404040004 | PARA: 64999 |
| 4 | * 4404010299 | PARA: 65000 |
| 4 | * 4404040006 | PARA: 65002 |
| 5 | * 4404040019 | PARA: 64998 |
| 5 | * 4404040020 | PARA: 64999 |
| 5 | * 4404040021 | PARA: 65000 |
| 5 | * 4404040022 | PARA: 65002 |
| 6 | * 4404301004 | PARA: 64998 |
| 6 | * 4404300910 | PARA: 64999, 65000 |
| 6 | * 4404190324 | PARA: 65002 |
| 7 | * 4404301003 | PARA: 64998, 64999, 65000 |
| 7 | * 4404300707 | PARA: 65002 |
| 8 | * 4404010172 | PARA: 64998 |
| 8 | * 4404040023 | PARA: 64999 |
| 8 | * 4404010174 | PARA: 65000 |
| 8 | * 4404040018 | PARA: 65002 |
| 9 | * 4404010025 | PARA: 64998 |
| 9 | * 4404010026 | PARA: 64999 |
| 9 | * 4404010027 | PARA: 65000 |
| 9 | * 4404010048 | PARA: 65002 |
| 10 | * 4404300917 | PARA: 64998 [4UT] |
| 10 | * 4404300915 | PARA: 64999 [4UT] |
| 10 | * 4404300916 | PARA: 65000 [6UT] |
| 10 | * 4404290109 | PARA: 65002 [6UT] |
| 11 | * 4404040103 | PARA: 64998 |
| 11 | * 4404040112 | PARA: 64999, 65000 |
| 11 | * 4404290108 | PARA: 65002 |